

BAY HARBOR  
TOWERS

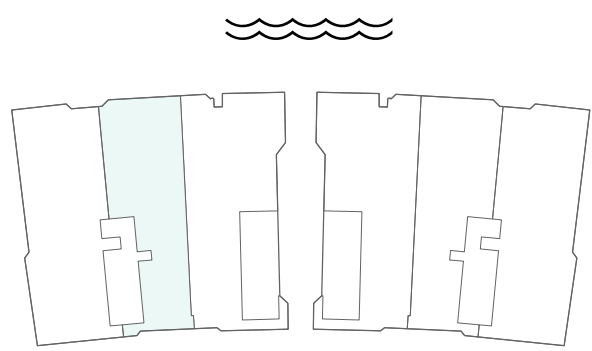
Residence  
505

3 BEDROOM + DEN  
4 BATHROOM

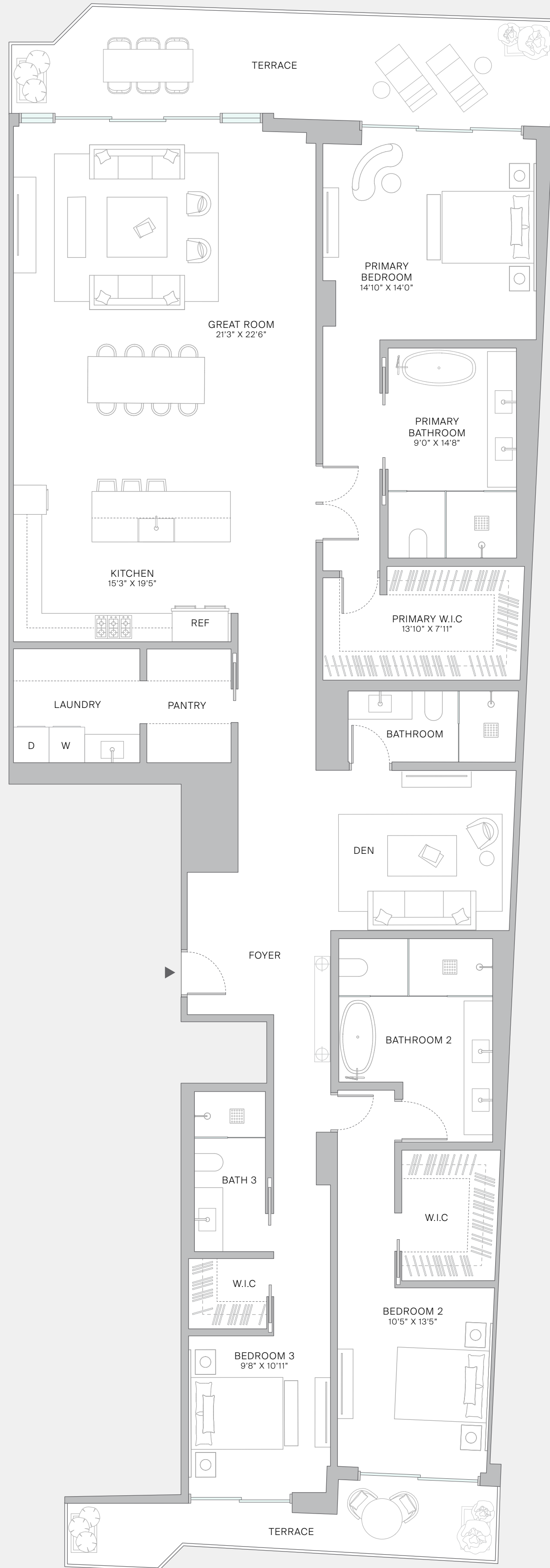
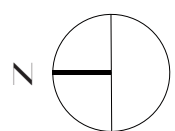
INTERIOR  
2,815 SF / 261 SM

EXTERIOR  
269 SF / 24 SM

TOTAL  
3,084 SF / 285 SM



EAST BAY HARBOR DRIVE



ORAL REPRESENTATIONS CANNOT BE RELIED UPON AS CORRECTLY STATING REPRESENTATIONS OF THE DEVELOPER. FOR CORRECT REPRESENTATIONS, MAKE REFERENCE TO THIS BROCHURE AND TO THE DOCUMENTS REQUIRED BY SECTION 718.503, FLORIDA STATUTES, TO BE FURNISHED BY A DEVELOPER TO A BUYER OR LESSEE.

This is not intended to be an offer to sell, or solicitation to buy, condominium units to residents of any jurisdiction where prohibited by law, and your eligibility for purchase will depend upon your state of residency. This offering is made only by the prospectus for the condominium and no statement should be relied upon if not made in the prospectus. The features, plans and specifications described or depicted herein are proposed only, and the Developer reserves the right to modify, revise or withdraw any or all of same in its sole discretion and without prior notice. Stated dimensions are measured to the exterior boundaries of the exterior walls and the centerline of interior demising walls and in fact vary from the dimensions that would be determined by using the description and definition of the "Unit" set forth in the Declaration (which generally only includes the interior airspace between the perimeter walls and excludes interior structural components). For your reference, the area of the Unit, determined in accordance with those defined unit boundaries, is the surveyor square footage of the unit. Note that measurements of rooms set forth on this floor plan are generally taken at the greatest points of each given room (as if the room were a perfect rectangle), without regard for any cutouts. Accordingly, the area of the actual room will typically be smaller than the product obtained by multiplying the stated length times width. All dimensions are approximate and may vary with actual construction, and all floor plans and development plans are subject to change. PPG DEVELOPMENT ("Named Party") is not the project Developer. This Condominium is being developed by PPG BHT Owner, LLC ("Developer"). Any and all statements, disclosures and/or representations shall be deemed made by Developer and not by Named Party and any purchaser agrees to look solely to Developer (and not to Named Party and/or any of its affiliates or principals) with respect to any and all matters relating to the marketing and/or development of the Condominium and with respect to the sales of units in the Condominium.



FORTUNE  
DEVELOPMENT  
SALES