

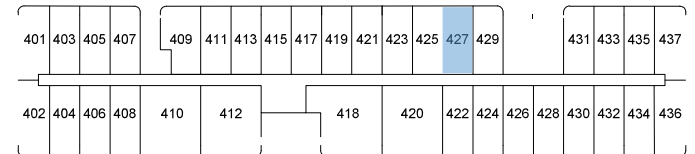
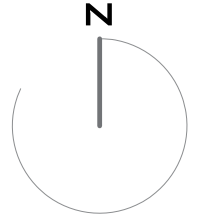
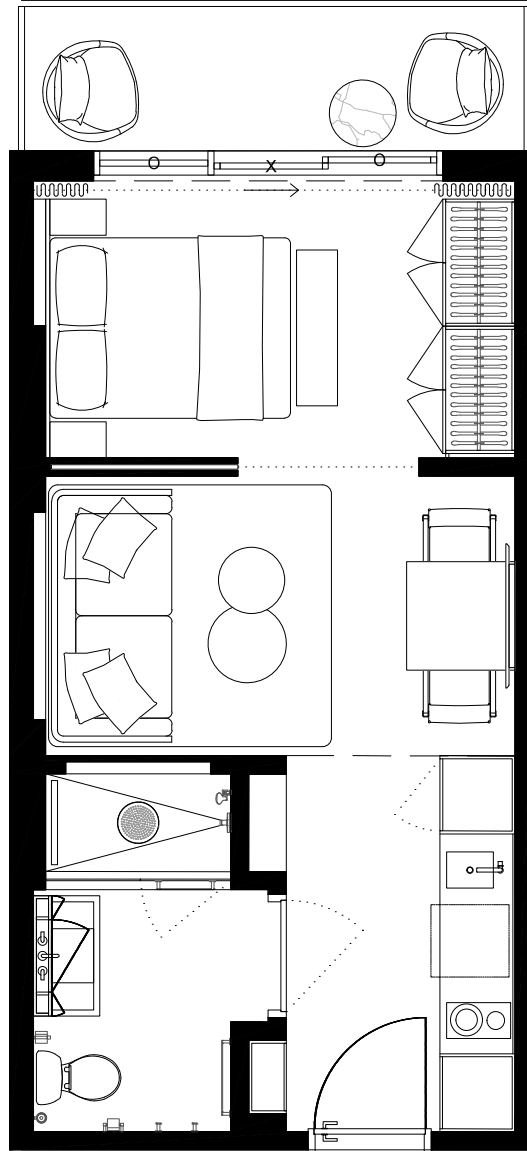


UNIT TYPE B.1

#427

STUDIO

INTERIOR	387sf/36M2
EXTERIOR	58sf/5,3M2
TOTAL	445sf/41,3M2



These drawings are conceptual only and are for the convenience of reference. They should not be relied upon as representations, express or implied, of the final detail of the residences. Units shown are examples of unit types and may not depict actual units. Stated square footages are ranges for a particular unit type and are measured to the exterior boundaries of the exterior walls and the centerline of interior demising walls and in fact vary from the area that would be determined by using the description and definition of the unit set forth in the declaration (which generally only includes the interior airspace between the perimeter walls and excludes interior structural components). Note that measurements of rooms set forth on this floorplan are generally taken at the greatest points of each given room (as if the room were a perfect rectangle), without regards for any cutouts. Accordingly, the area of the actual room will typically be smaller than the product obtained by multiplying the stated length times width. All dimensions are approximate and may vary with actual construction, and all floor plans and development plans are subject to change.

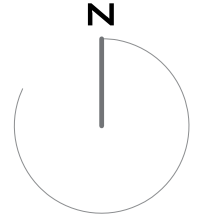
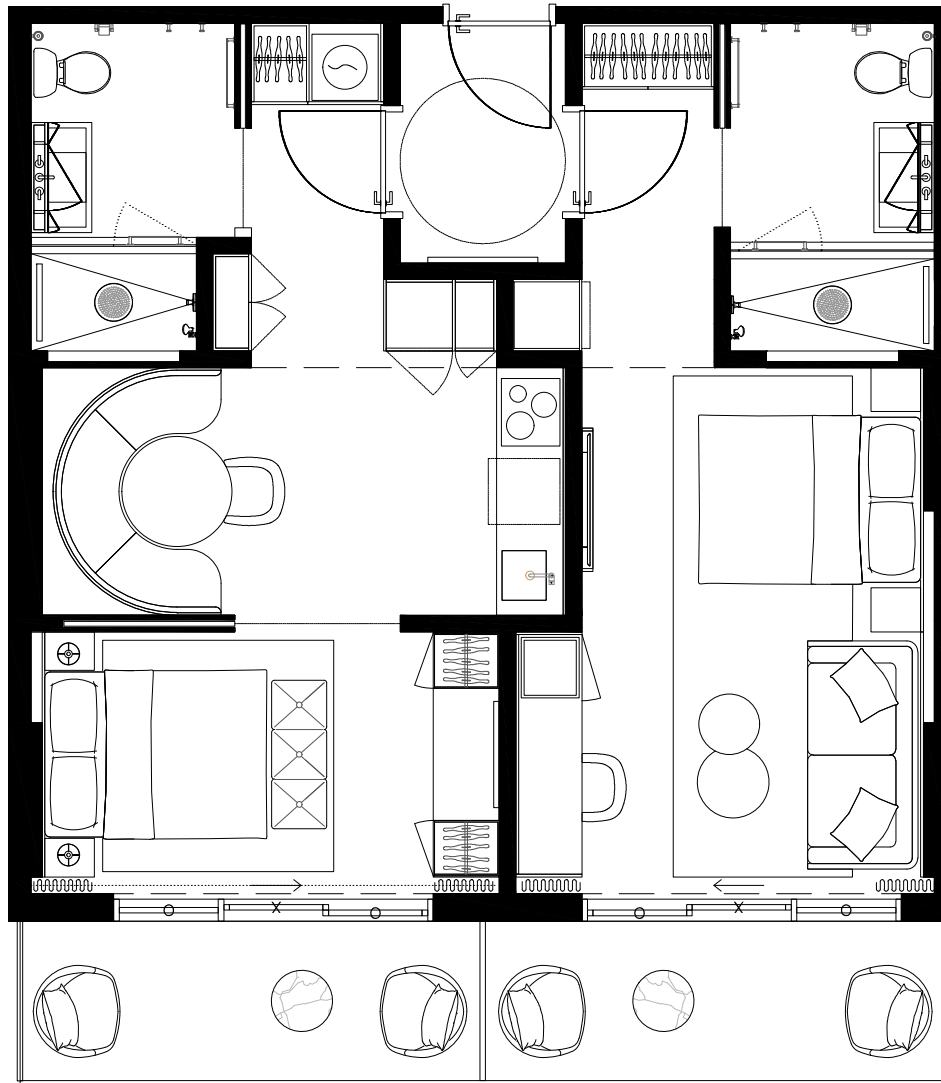
EDGEWATER MIAMI
VIDA[®]
 RESIDENCES

UNIT TYPE E.1

#420

2 BED + 2 BATH

INTERIOR 774sf/71,9M2
 EXTERIOR 140sf/13M2
 TOTAL 914sf/84,9M2



401	403	405	407	409	411	413	415	417	419	421	423	425	427	429	431	433	435	437	
402	404	406	408	410	412	418	420	422	424	426	428	430	432	434	436				

These drawings are conceptual only and are for the convenience of reference. They should not be relied upon as representations, express or implied, of the final detail of the residences. Units shown are examples of unit types and may not depict actual units. Stated square footages are ranges for a particular unit type and are measured to the exterior boundaries of the exterior walls and the centerline of interior demising walls and in fact vary from the area that would be determined by using the description and definition of the unit set forth in the declaration (which generally only includes the interior airspace between the perimeter walls and excludes interior structural components). Note that measurements of rooms set forth on this floorplan are generally taken at the greatest points of each given room (as if the room were a perfect rectangle), without regards for any cutouts. Accordingly, the area of the actual room will typically be smaller than the product obtained by multiplying the stated length times width. All dimensions are approximate and may vary with actual construction, and all floor plans and development plans are subject to change.

EDGEWATER MIAMI

VIDA®

RESIDENCES

UNIT TYPE F

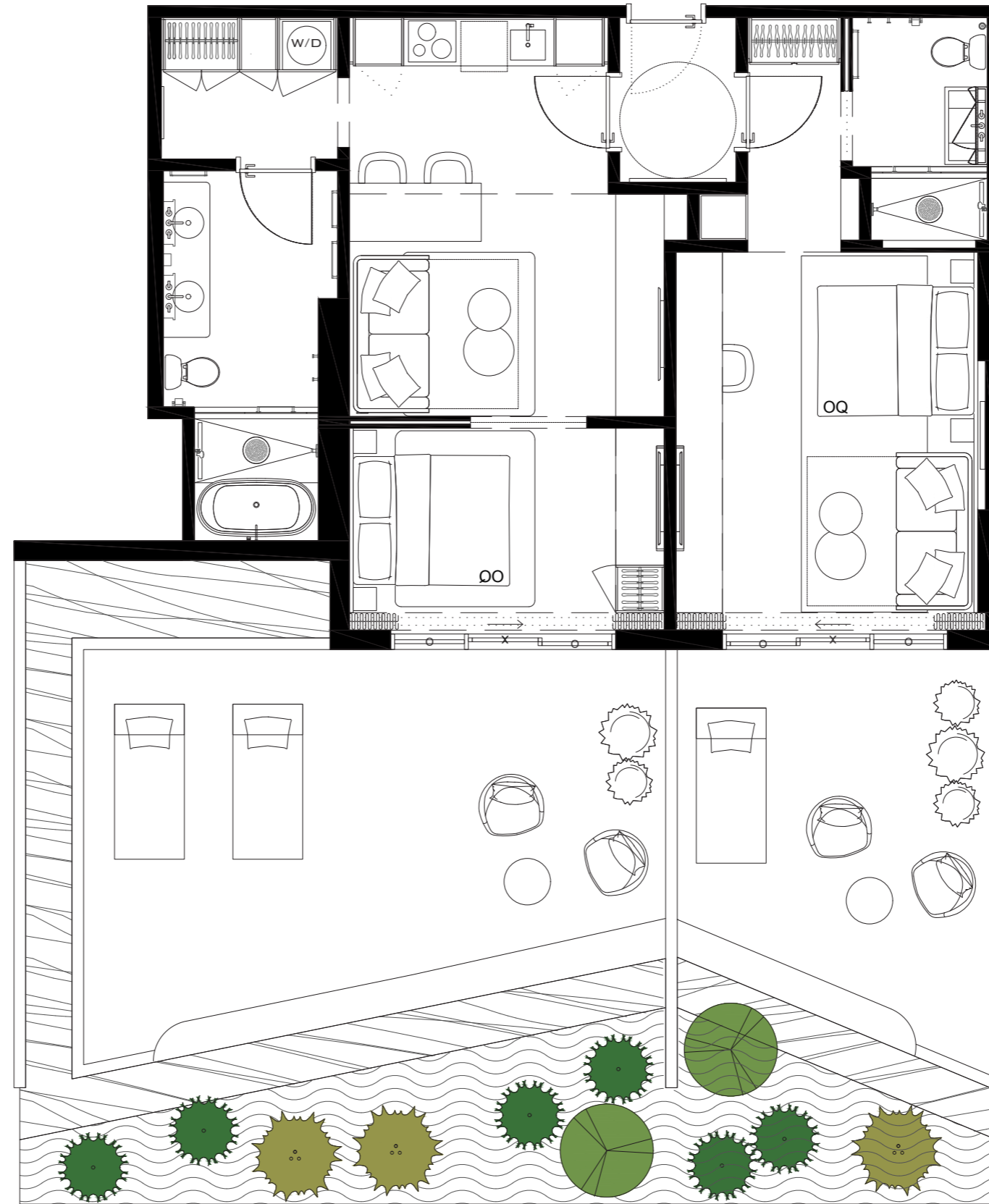
#318

2 BED + 2 BATH

INTERIOR 970sf/90M2

EXTERIOR 1053sf/97,8M2

TOTAL 2023sf/187,9M2



301	303	305	307	309	311	313	315	317	319	321	323	325	327	329	331	333	335	337	
302	304	306	308	310	312	318	320	322	324	326	328	330	332	334	336				



These drawings are conceptual only and are for the convenience of reference. They should not be relied upon as representations, express or implied, of the final detail of the residences. Units shown are examples of unit types and may not depict actual units. Stated square footages are ranges for a particular unit type and are measured to the exterior boundaries of the exterior walls and the centerline of interior demising walls and in fact vary from the area that would be determined by using the description and definition of the unit set forth in the declaration (which generally only includes the interior airspace between the perimeter walls and excludes interior structural components). Note that measurements of rooms set forth on this floorplan are generally taken at the greatest points of each given room (as if the room were a perfect rectangle), without regards for any cutouts. Accordingly, the area of the actual room will typically be smaller than the product obtained by multiplying the stated length times width. All dimensions are approximate and may vary with actual construction, and all floor plans and development plans are subject to change.

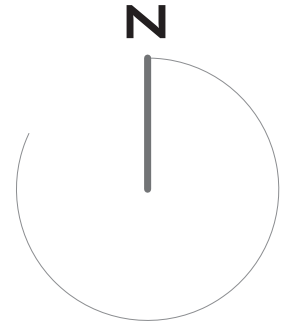
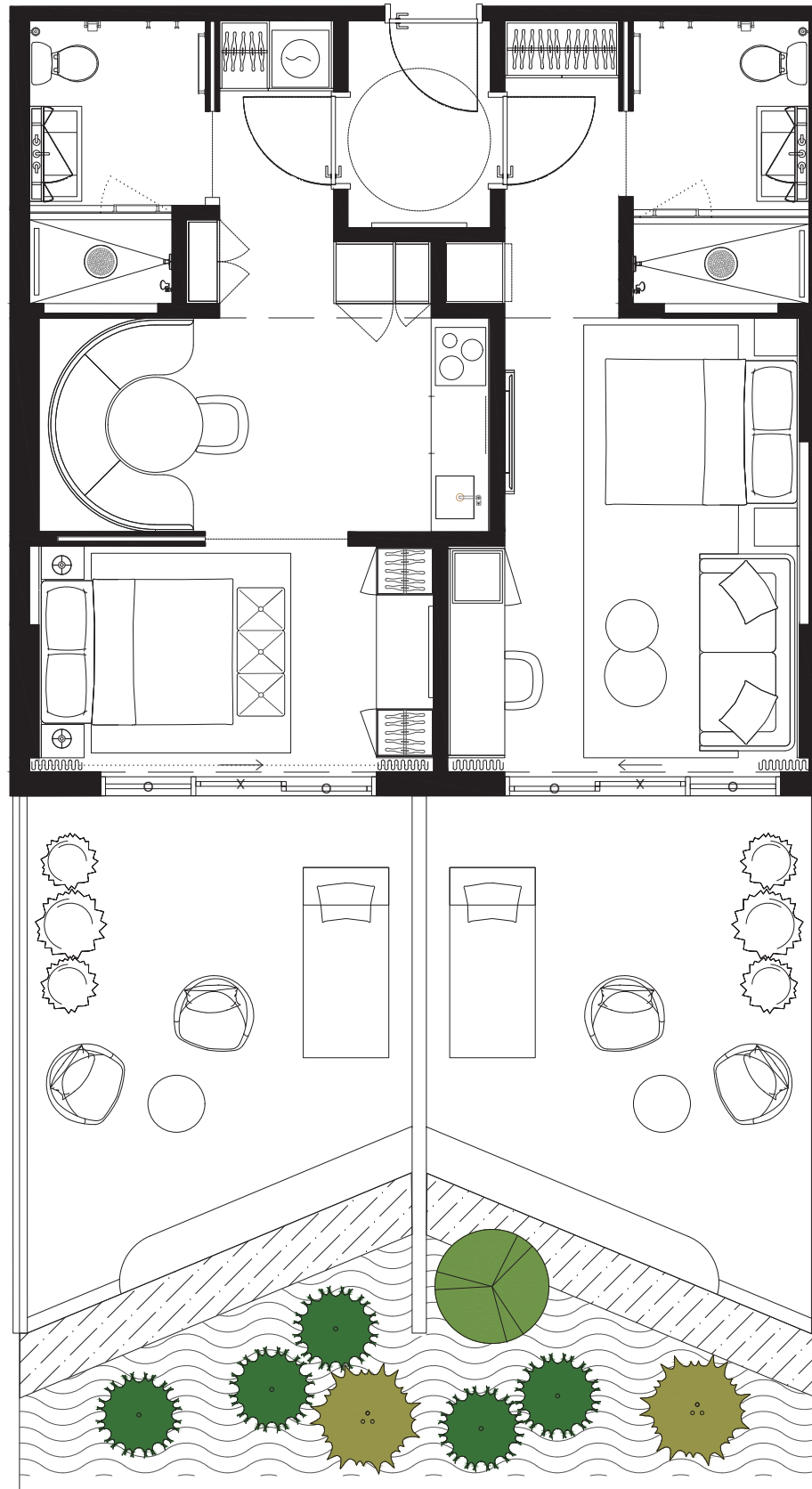
EDGEWATER MIAMI
VIDA[®]
 RESIDENCES

UNIT TYPE E.1

#320

2 BED + 2 BATH

INTERIOR 774sf/71,9M2
 EXTERIOR 682sf/63,4M2
 TOTAL 1456sf/135,3M2



301	303	305	307	309	311	313	315	317	319	321	323	325	327	329	331	333	335	337	
302	304	306	308	310	312	318	320	322	324	326	328	330	332	334	336				

These drawings are conceptual only and are for the convenience of reference. They should not be relied upon as representations, express or implied, of the final detail of the residences. Units shown are examples of unit types and may not depict actual units. Stated square footages are ranges for a particular unit type and are measured to the exterior boundaries of the exterior walls and the centerline of interior demising walls and in fact vary from the area that would be determined by using the description and definition of the unit set forth in the declaration (which generally only includes the interior airspace between the perimeter walls and excludes interior structural components). Note that measurements of rooms set forth on this floorplan are generally taken at the greatest points of each given room (as if the room were a perfect rectangle), without regards for any cutouts. Accordingly, the area of the actual room will typically be smaller than the product obtained by multiplying the stated length times width. All dimensions are approximate and may vary with actual construction, and all floor plans and development plans are subject to change.