

EDGEWATER MIAMI  
**VIDA**<sup>®</sup>  
 RESIDENCES

**UNIT TYPE H.2**

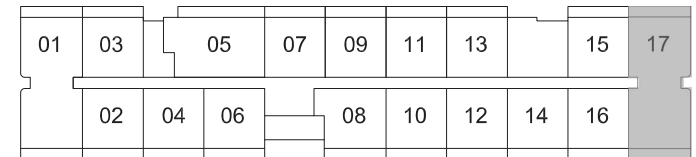
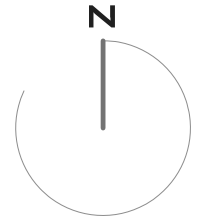
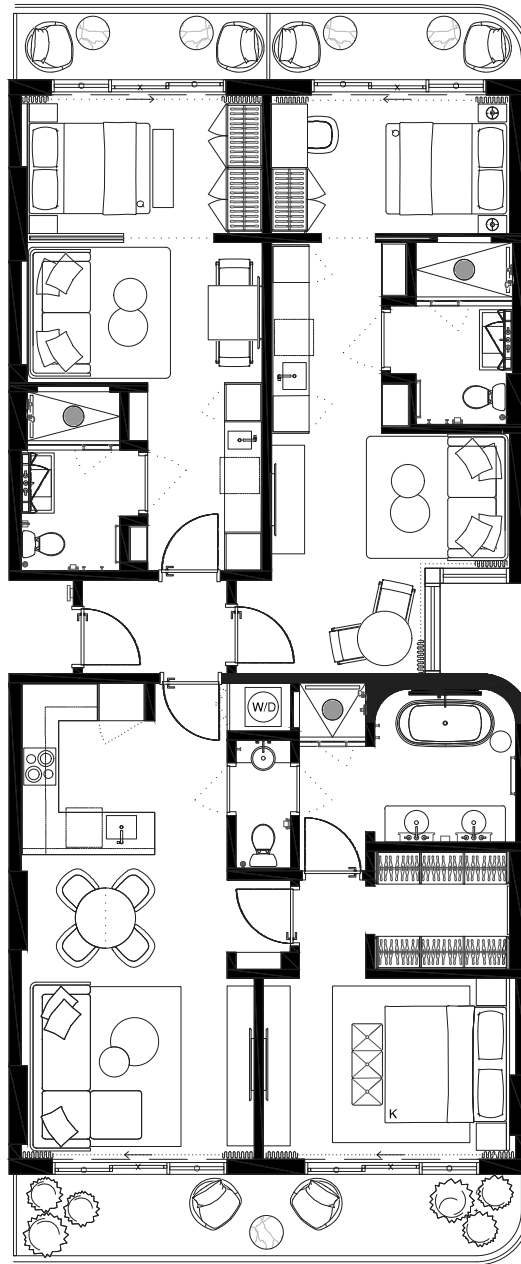
#517 #617 #717 #817

**3 BED+3 BATH**

INTERIOR 1681sf/156,1m2

EXTERIOR 258sf/24m2

TOTAL 1939sf/180,1m2



These drawings are conceptual only and are for the convenience of reference. They should not be relied upon as representations, express or implied, of the final detail of the residences. Units shown are examples of unit types and may not depict actual units. Stated square footages are ranges for a particular unit type and are measured to the exterior boundaries of the exterior walls and the centerline of interior demising walls and in fact vary from the area that would be determined by using the description and definition of the unit set forth in the declaration (which generally only includes the interior airspace between the perimeter walls and excludes interior structural components). Note that measurements of rooms set forth on this floorplan are generally taken at the greatest points of each given room (as if the room were a perfect rectangle), without regards for any cutouts. Accordingly, the area of the actual room will typically be smaller than the product obtained by multiplying the stated length times width. All dimensions are approximate and may vary with actual construction, and all floor plans and development plans are subject to change.

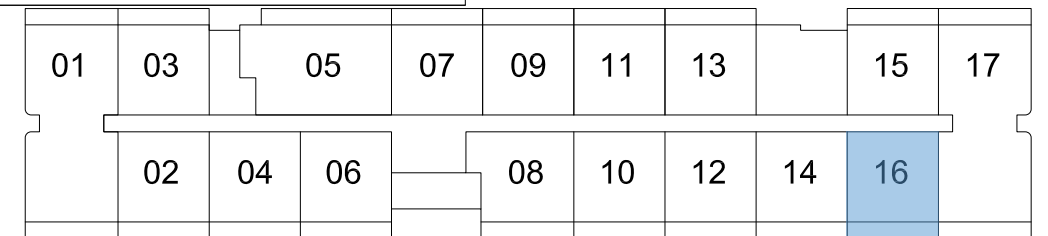
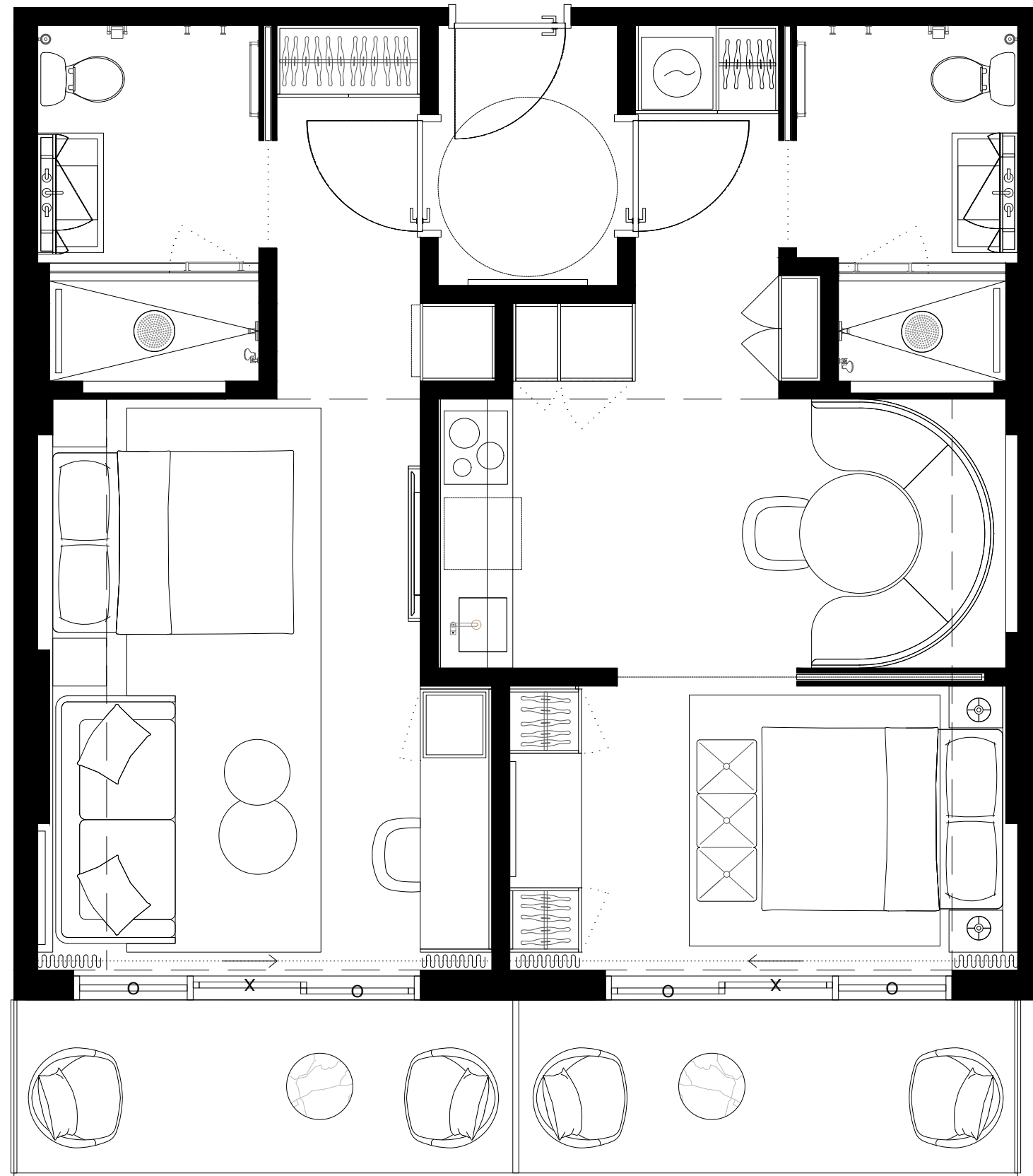
EDGEWATER MIAMI  
**VIDA**<sup>®</sup>  
 RESIDENCES

**UNIT TYPE E.4**

#516 #616 #716 #816

**2 BED + 2 BATH**

INTERIOR            774sf/72M2  
 EXTERIOR            141sf/13M2  
 TOTAL                915sf/84,9M2



These drawings are conceptual only and are for the convenience of reference. They should not be relied upon as representations, express or implied, of the final detail of the residences. Units shown are examples of unit types and may not depict actual units. Stated square footages are ranges for a particular unit type and are measured to the exterior boundaries of the exterior walls and the centerline of interior demising walls and in fact vary from the area that would be determined by using the description and definition of the unit set forth in the declaration (which generally only includes the interior airspace between the perimeter walls and excludes interior structural components). Note that measurements of rooms set forth on this floorplan are generally taken at the greatest points of each given room (as if the room were a perfect rectangle), without regards for any cutouts. Accordingly, the area of the actual room will typically be smaller than the product obtained by multiplying the stated length times width. All dimensions are approximate and may vary with actual construction, and all floor plans and development plans are subject to change.

EDGEWATER MIAMI

**VIDA**<sup>®</sup>

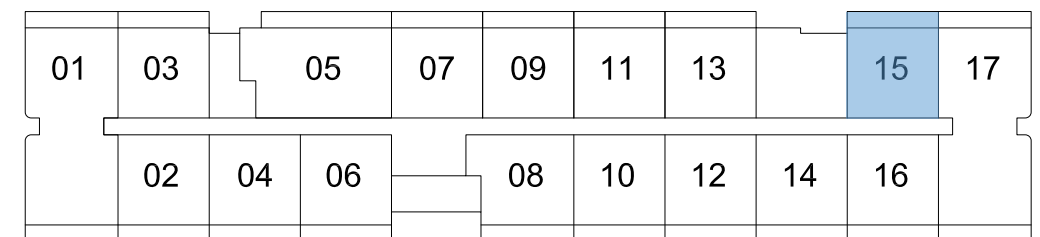
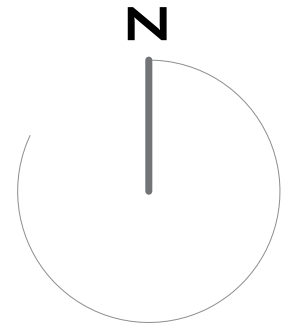
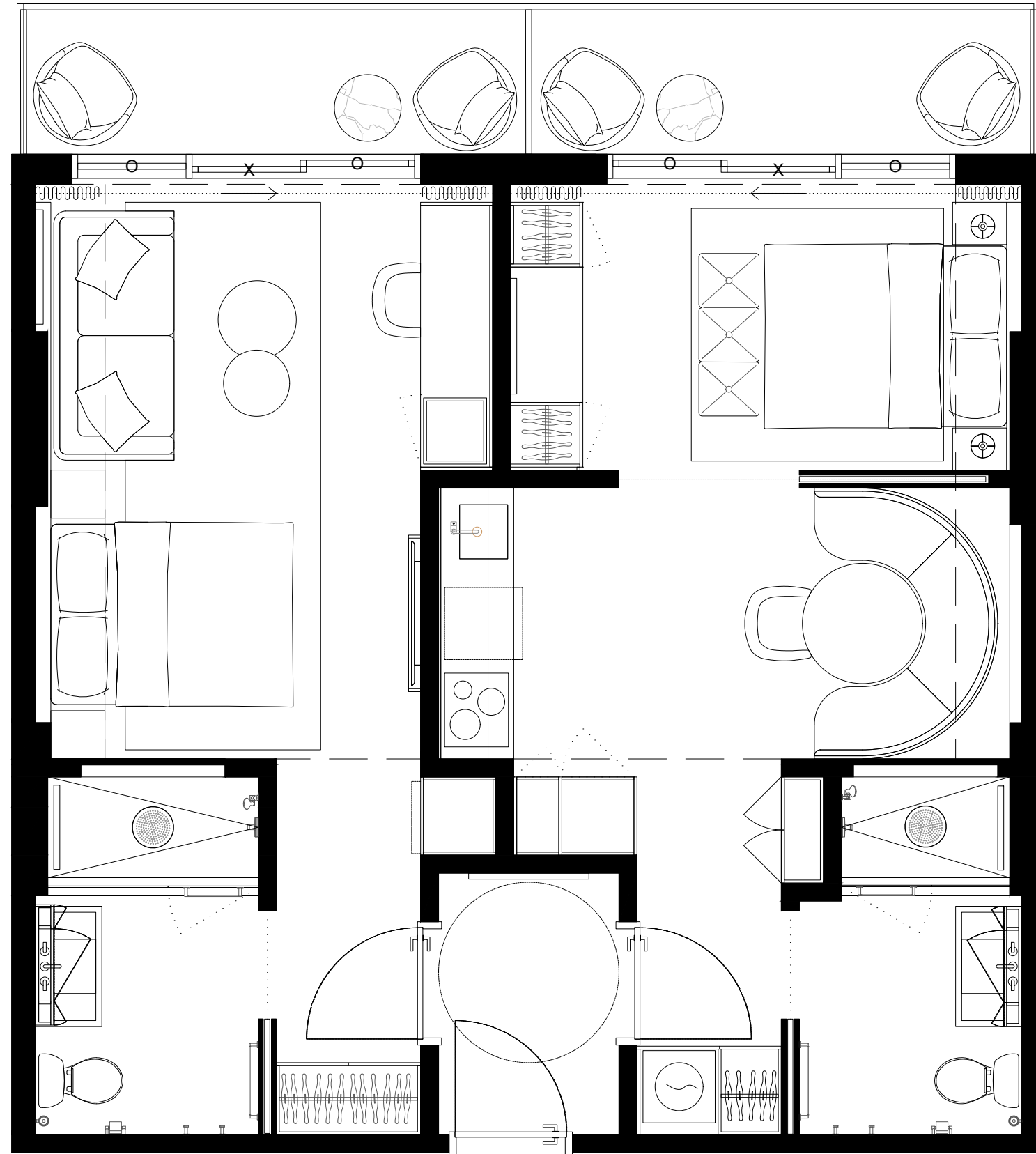
RESIDENCES

**UNIT TYPE E.3**

#515 #615 #715 #815

**2 BED + 2 BATH**

INTERIOR 774sf/72M2  
 EXTERIOR 116,5sf/11M2  
 TOTAL 890,5sf/83M2



These drawings are conceptual only and are for the convenience of reference. They should not be relied upon as representations, express or implied, of the final detail of the residences. Units shown are examples of unit types and may not depict actual units. Stated square footages are ranges for a particular unit type and are measured to the exterior boundaries of the exterior walls and the centerline of interior demising walls and in fact vary from the area that would be determined by using the description and definition of the unit set forth in the declaration (which generally only includes the interior airspace between the perimeter walls and excludes interior structural components). Note that measurements of rooms set forth on this floorplan are generally taken at the greatest points of each given room (as if the room were a perfect rectangle), without regards for any cutouts. Accordingly, the area of the actual room will typically be smaller than the product obtained by multiplying the stated length times width. All dimensions are approximate and may vary with actual construction, and all floor plans and development plans are subject to change.

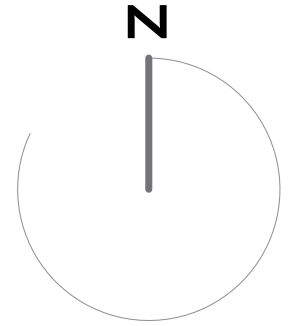
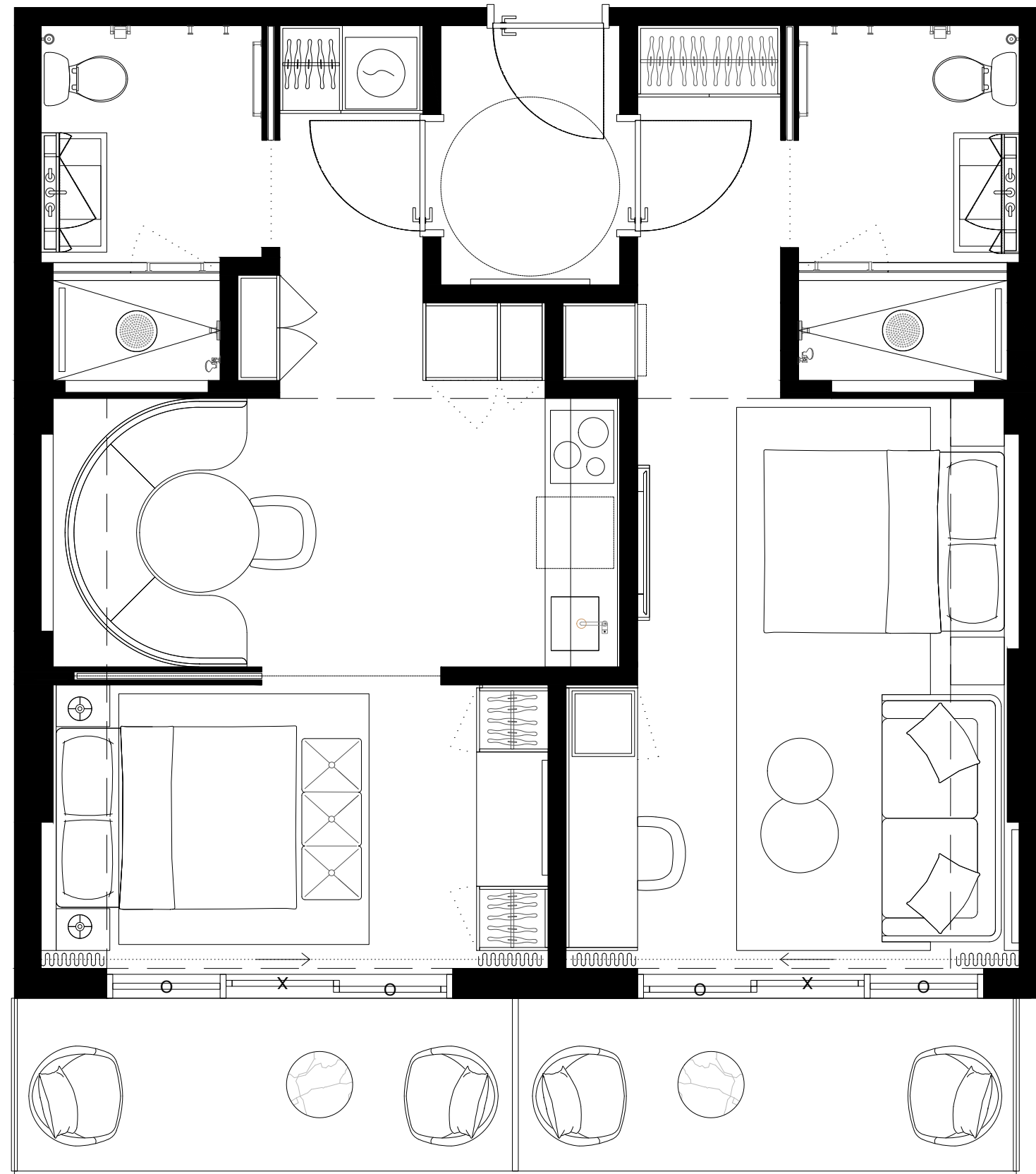
EDGEWATER MIAMI  
**VIDA**<sup>®</sup>  
 RESIDENCES

**UNIT TYPE E.4**

#514 #614 #714 #814

**2 BED + 2 BATH**

INTERIOR 774SF/72M2  
 EXTERIOR 141SF/13M2  
 TOTAL 915SF/84,9M2



01	03	05	07	09	11	13	15	17
	02	04	06	08	10	12	14	16



These drawings are conceptual only and are for the convenience of reference. They should not be relied upon as representations, express or implied, of the final detail of the residences. Units shown are examples of unit types and may not depict actual units. Stated square footages are ranges for a particular unit type and are measured to the exterior boundaries of the exterior walls and the centerline of interior demising walls and in fact vary from the area that would be determined by using the description and definition of the unit set forth in the declaration (which generally only includes the interior airspace between the perimeter walls and excludes interior structural components). Note that measurements of rooms set forth on this floorplan are generally taken at the greatest points of each given room (as if the room were a perfect rectangle), without regards for any cutouts. Accordingly, the area of the actual room will typically be smaller than the product obtained by multiplying the stated length times width. All dimensions are approximate and may vary with actual construction, and all floor plans and development plans are subject to change.



EDGEWATER MIAMI

# VIDA®

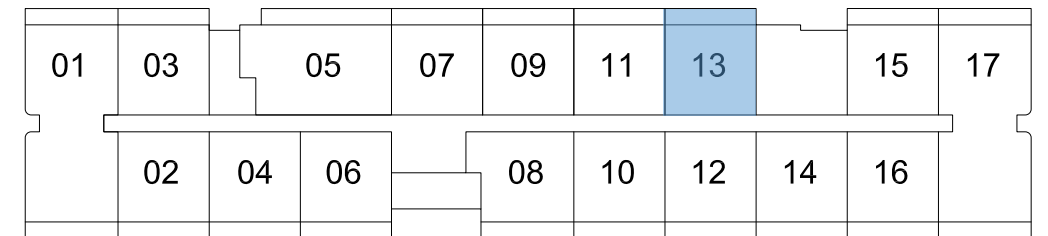
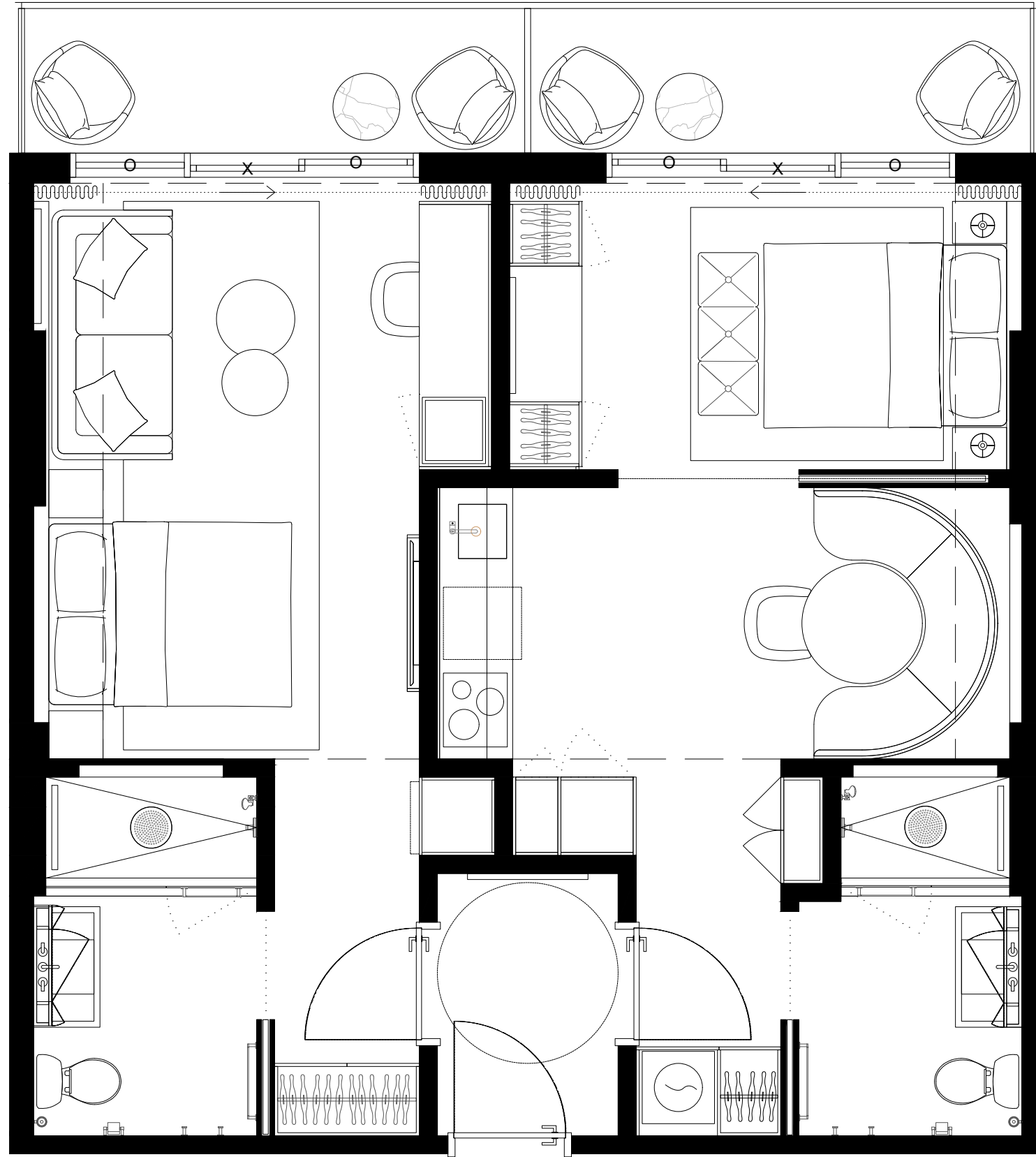
RESIDENCES

## UNIT TYPE E.3

#513 #613 #713 #813

### 2 BED + 2 BATH

INTERIOR	774sqft/72m2
EXTERIOR	116,5sf/11m2
TOTAL	890,5sf/83m2



These drawings are conceptual only and are for the convenience of reference. They should not be relied upon as representations, express or implied, of the final detail of the residences. Units shown are examples of unit types and may not depict actual units. Stated square footages are ranges for a particular unit type and are measured to the exterior boundaries of the exterior walls and the centerline of interior demising walls and in fact vary from the area that would be determined by using the description and definition of the unit set forth in the declaration (which generally only includes the interior airspace between the perimeter walls and excludes interior structural components). Note that measurements of rooms set forth on this floorplan are generally taken at the greatest points of each given room (as if the room were a perfect rectangle), without regards for any cutouts. Accordingly, the area of the actual room will typically be smaller than the product obtained by multiplying the stated length times width. All dimensions are approximate and may vary with actual construction, and all floor plans and development plans are subject to change.

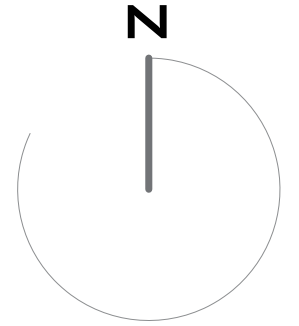
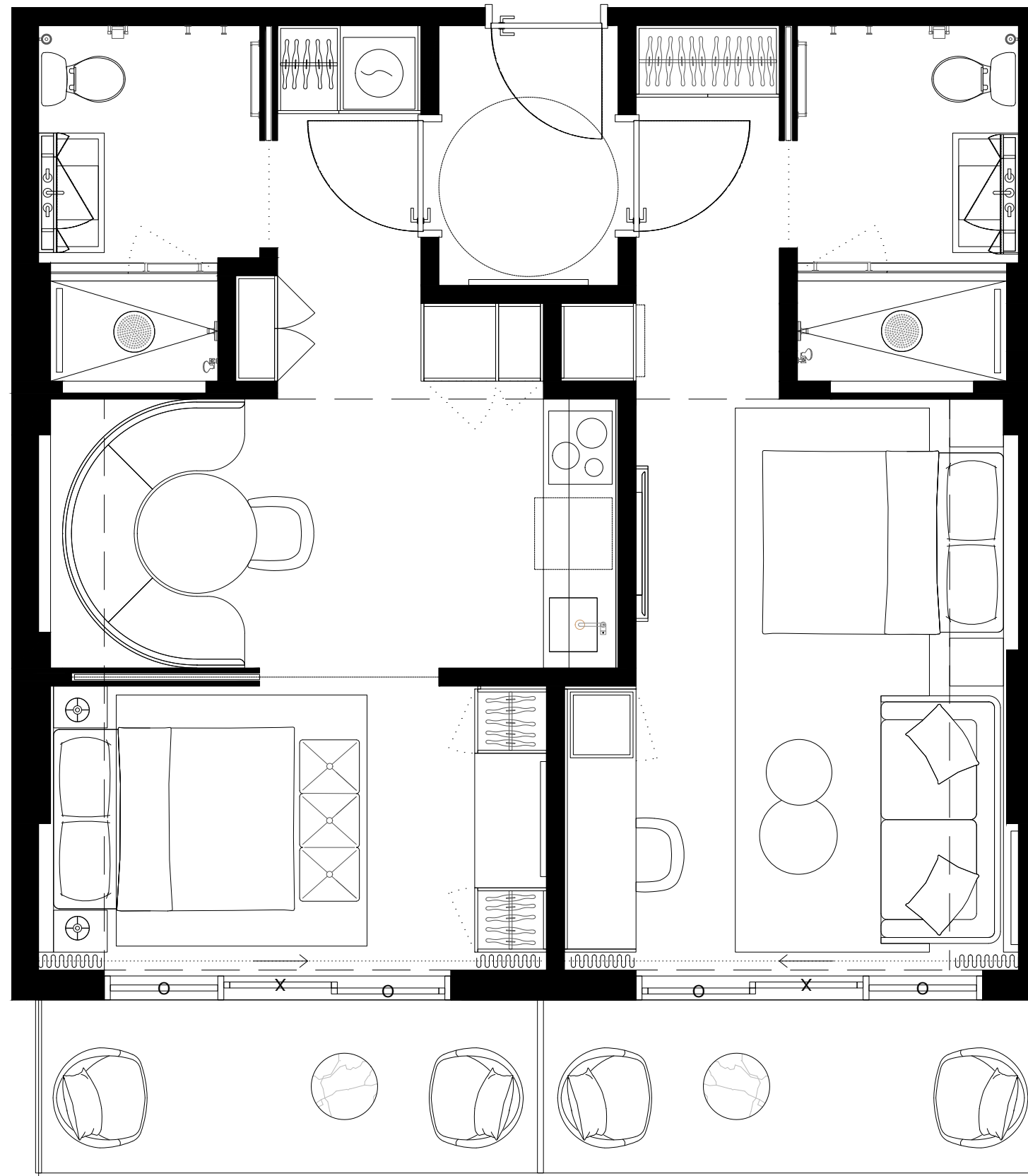
EDGEWATER MIAMI  
**VIDA**<sup>®</sup>  
 RESIDENCES

**UNIT TYPE E.4**

#512 #612 #712 #812

**2 BED + 2 BATH**

INTERIOR 774SQFT/72M2  
 EXTERIOR 141SQFT/13M2  
 TOTAL 915SQFT/84,9M2



01	03	05	07	09	11	13	15	17
	02	04	06	08	10	12	14	16



These drawings are conceptual only and are for the convenience of reference. They should not be relied upon as representations, express or implied, of the final detail of the residences. Units shown are examples of unit types and may not depict actual units. Stated square footages are ranges for a particular unit type and are measured to the exterior boundaries of the exterior walls and the centerline of interior demising walls and in fact vary from the area that would be determined by using the description and definition of the unit set forth in the declaration (which generally only includes the interior airspace between the perimeter walls and excludes interior structural components). Note that measurements of rooms set forth on this floorplan are generally taken at the greatest points of each given room (as if the room were a perfect rectangle), without regards for any cutouts. Accordingly, the area of the actual room will typically be smaller than the product obtained by multiplying the stated length times width. All dimensions are approximate and may vary with actual construction, and all floor plans and development plans are subject to change.

EDGEWATER MIAMI

# VIDA®

RESIDENCES

## UNIT TYPE E.3

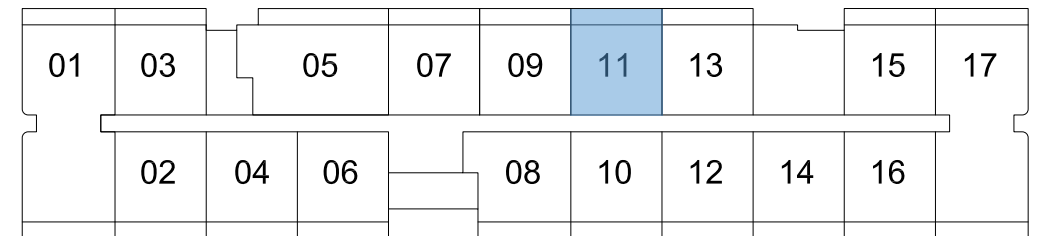
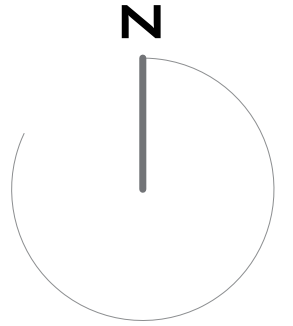
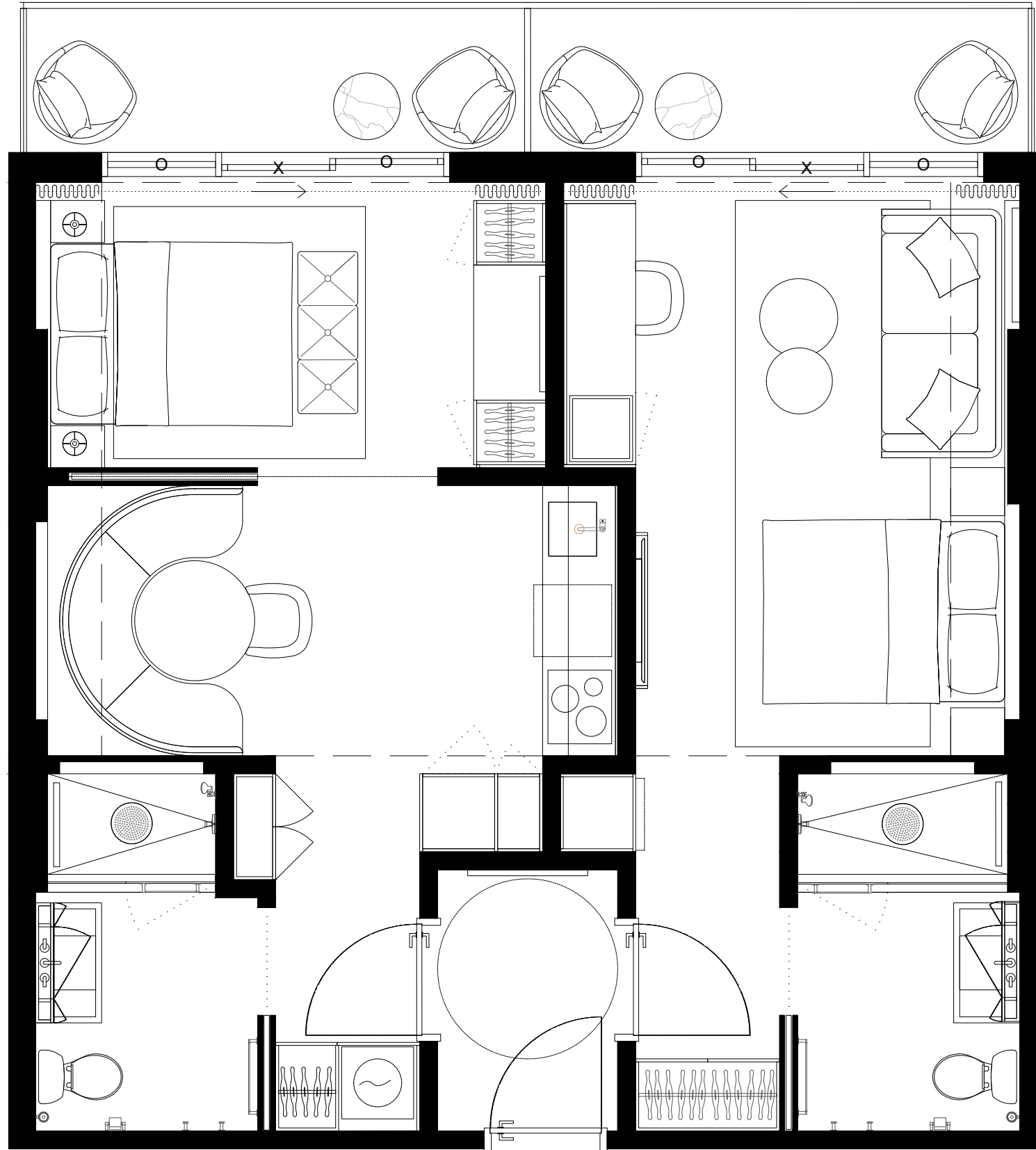
#511 #611 #711 #811

### 2 BED + 2 BATH

INTERIOR 774SQFT/72M2

EXTERIOR 141SQFT/13M2

TOTAL 915SQFT/84,9M2



These drawings are conceptual only and are for the convenience of reference. They should not be relied upon as representations, express or implied, of the final detail of the residences. Units shown are examples of unit types and may not depict actual units. Stated square footages are ranges for a particular unit type and are measured to the exterior boundaries of the exterior walls and the centerline of interior demising walls and in fact vary from the area that would be determined by using the description and definition of the unit set forth in the declaration (which generally only includes the interior airspace between the perimeter walls and excludes interior structural components). Note that measurements of rooms set forth on this floorplan are generally taken at the greatest points of each given room (as if the room were a perfect rectangle), without regards for any cutouts. Accordingly, the area of the actual room will typically be smaller than the product obtained by multiplying the stated length times width. All dimensions are approximate and may vary with actual construction, and all floor plans and development plans are subject to change.

EDGEWATER MIAMI

# VIDA®

RESIDENCES

## UNIT TYPE E.4

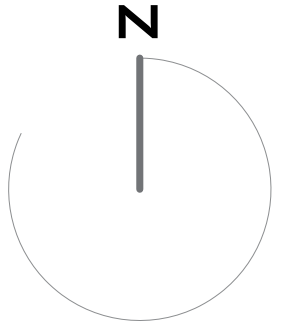
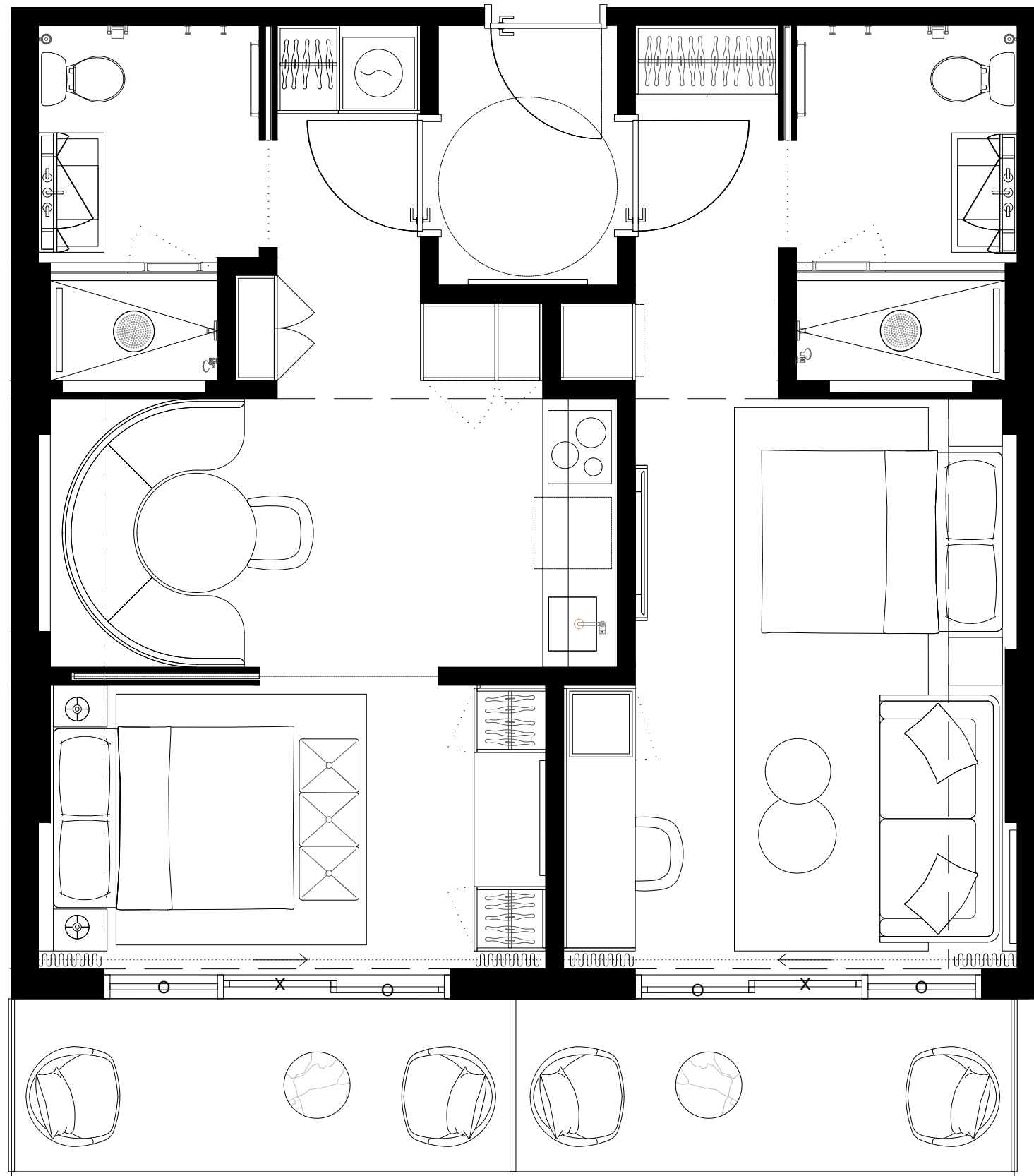
#510 #610 #710 #810

### 2 BED + 2 BATH

INTERIOR 774SF/72M2

EXTERIOR 141SF/13M2

TOTAL 915SF/84,9M2



01	03	05	07	09	11	13	15	17
	02	04	06	08	10	12	14	16



These drawings are conceptual only and are for the convenience of reference. They should not be relied upon as representations, express or implied, of the final detail of the residences. Units shown are examples of unit types and may not depict actual units. Stated square footages are ranges for a particular unit type and are measured to the exterior boundaries of the exterior walls and the centerline of interior demising walls and in fact vary from the area that would be determined by using the description and definition of the unit set forth in the declaration (which generally only includes the interior airspace between the perimeter walls and excludes interior structural components). Note that measurements of rooms set forth on this floorplan are generally taken at the greatest points of each given room (as if the room were a perfect rectangle), without regards for any cutouts. Accordingly, the area of the actual room will typically be smaller than the product obtained by multiplying the stated length times width. All dimensions are approximate and may vary with actual construction, and all floor plans and development plans are subject to change.

EDGEWATER MIAMI

# VIDA®

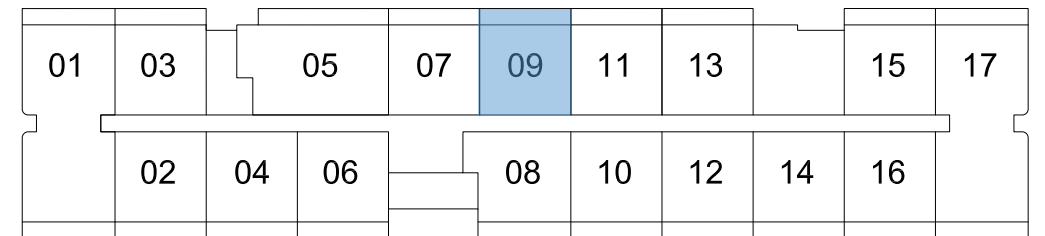
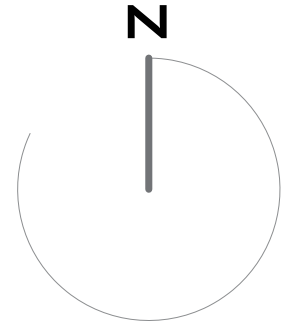
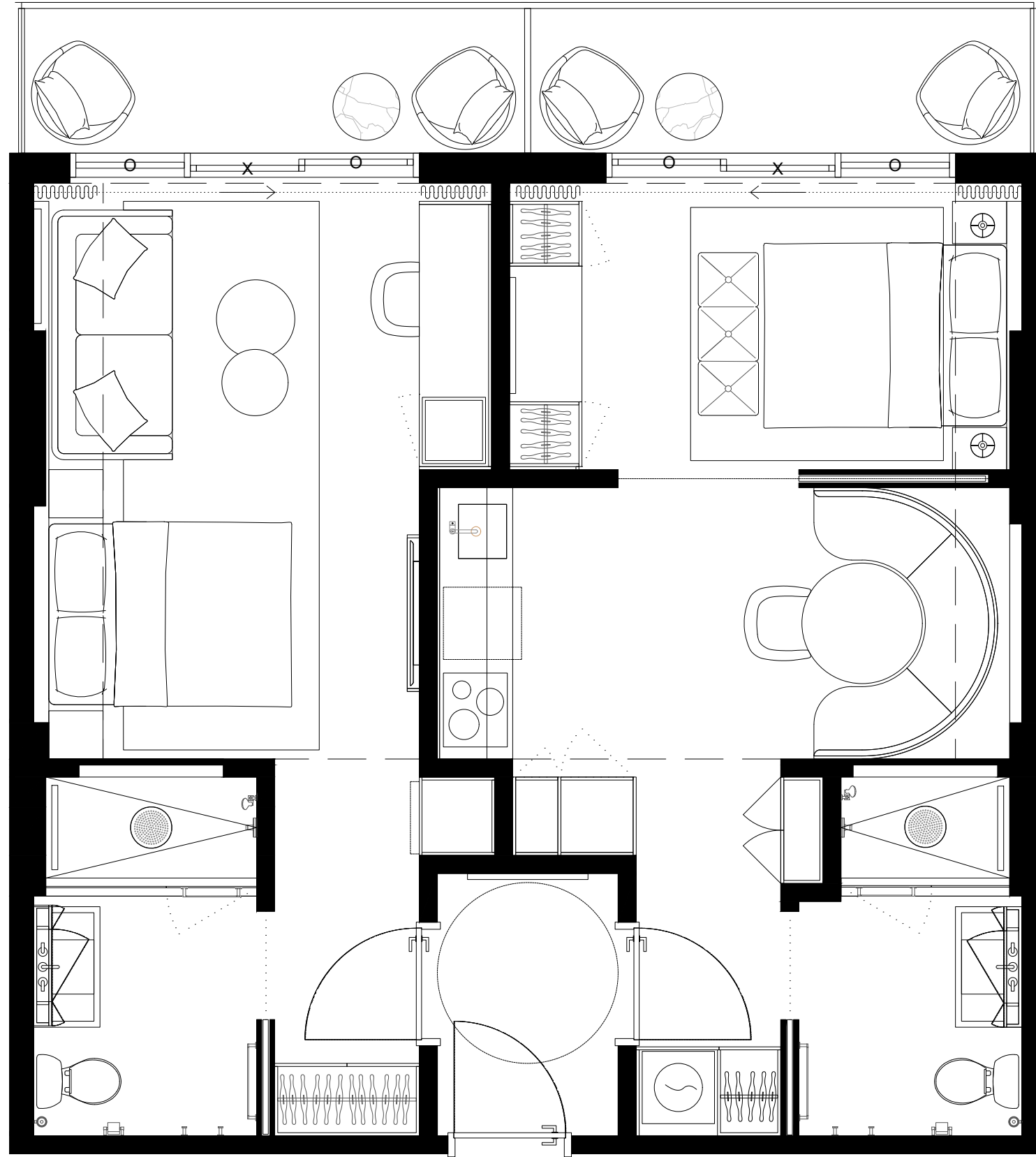
RESIDENCES

## UNIT TYPE E.3

#509 #609 #709 #809

### 2 BED + 2 BATH

INTERIOR	774sqft/72m2
EXTERIOR	116,5sf/11m2
TOTAL	890,5sf/83m2



These drawings are conceptual only and are for the convenience of reference. They should not be relied upon as representations, express or implied, of the final detail of the residences. Units shown are examples of unit types and may not depict actual units. Stated square footages are ranges for a particular unit type and are measured to the exterior boundaries of the exterior walls and the centerline of interior demising walls and in fact vary from the area that would be determined by using the description and definition of the unit set forth in the declaration (which generally only includes the interior airspace between the perimeter walls and excludes interior structural components). Note that measurements of rooms set forth on this floorplan are generally taken at the greatest points of each given room (as if the room were a perfect rectangle), without regards for any cutouts. Accordingly, the area of the actual room will typically be smaller than the product obtained by multiplying the stated length times width. All dimensions are approximate and may vary with actual construction, and all floor plans and development plans are subject to change.

EDGEWATER MIAMI

**VIDA**®

RESIDENCES

**UNIT TYPE F**

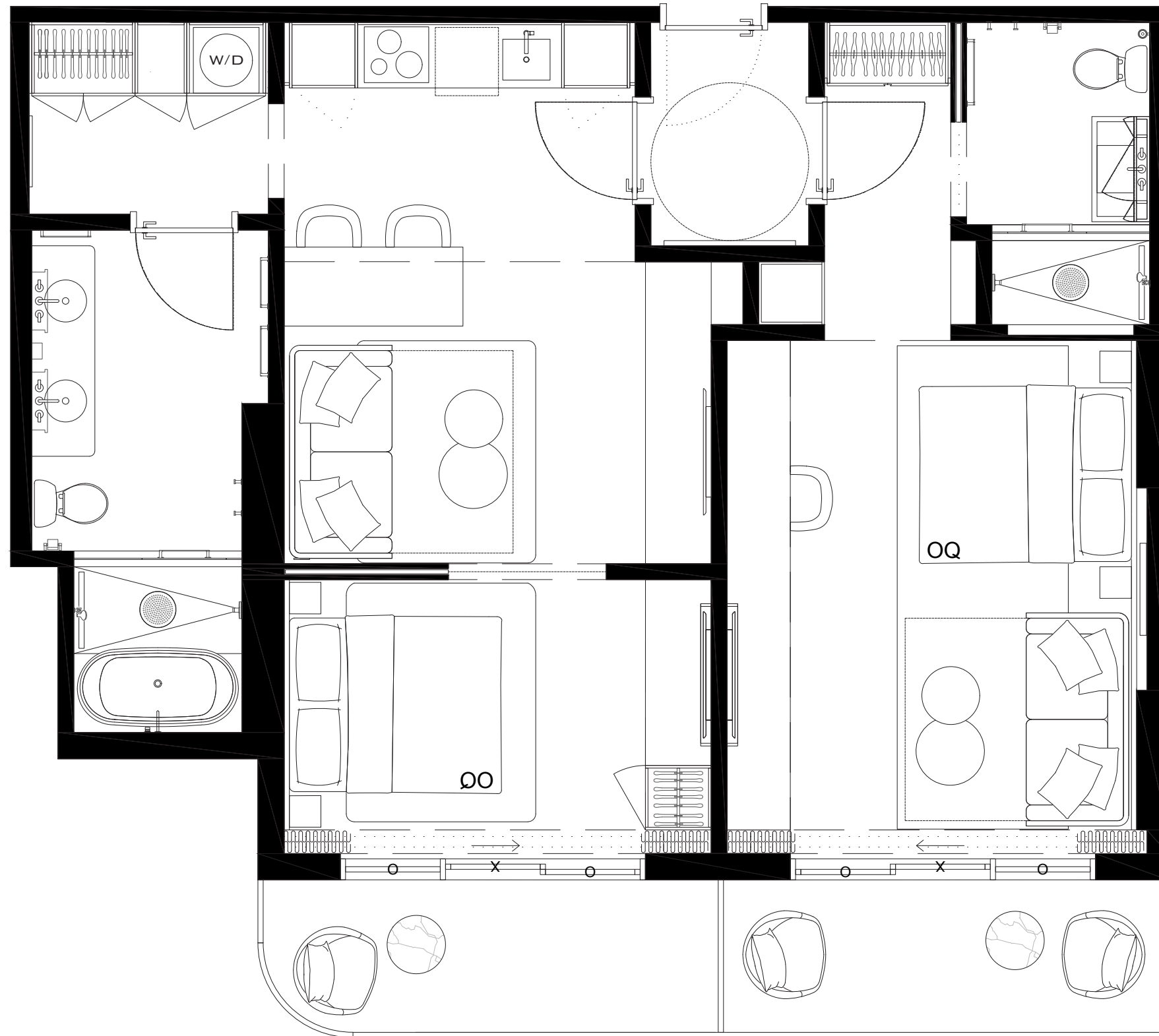
#418 #518 #618 #718 #818

**2 BED + 2 BATH**

INTERIOR 970SF/90M<sup>2</sup>

EXTERIOR 141SF/13M<sup>2</sup>

TOTAL 1111SF/103,2M<sup>2</sup>



401	403	405	407	409	411	413	415	417	419	421	423	425	427	429	431	433	435	437	
402	404	406	408	410	412	418	420	422	424	426	428	430	432	434	436				



These drawings are conceptual only and are for the convenience of reference. They should not be relied upon as representations, express or implied, of the final detail of the residences. Units shown are examples of unit types and may not depict actual units. Stated square footages are ranges for a particular unit type and are measured to the exterior boundaries of the exterior walls and the centerline of interior demising walls and in fact vary from the area that would be determined by using the description and definition of the unit set forth in the declaration (which generally only includes the interior airspace between the perimeter walls and excludes interior structural components). Note that measurements of rooms set forth on this floorplan are generally taken at the greatest points of each given room (as if the room were a perfect rectangle), without regards for any cutouts. Accordingly, the area of the actual room will typically be smaller than the product obtained by multiplying the stated length times width. All dimensions are approximate and may vary with actual construction, and all floor plans and development plans are subject to change.



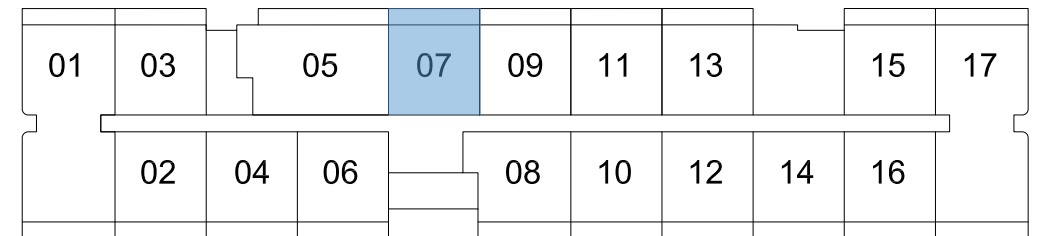
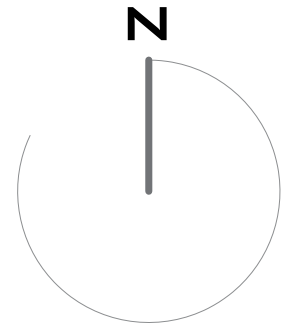
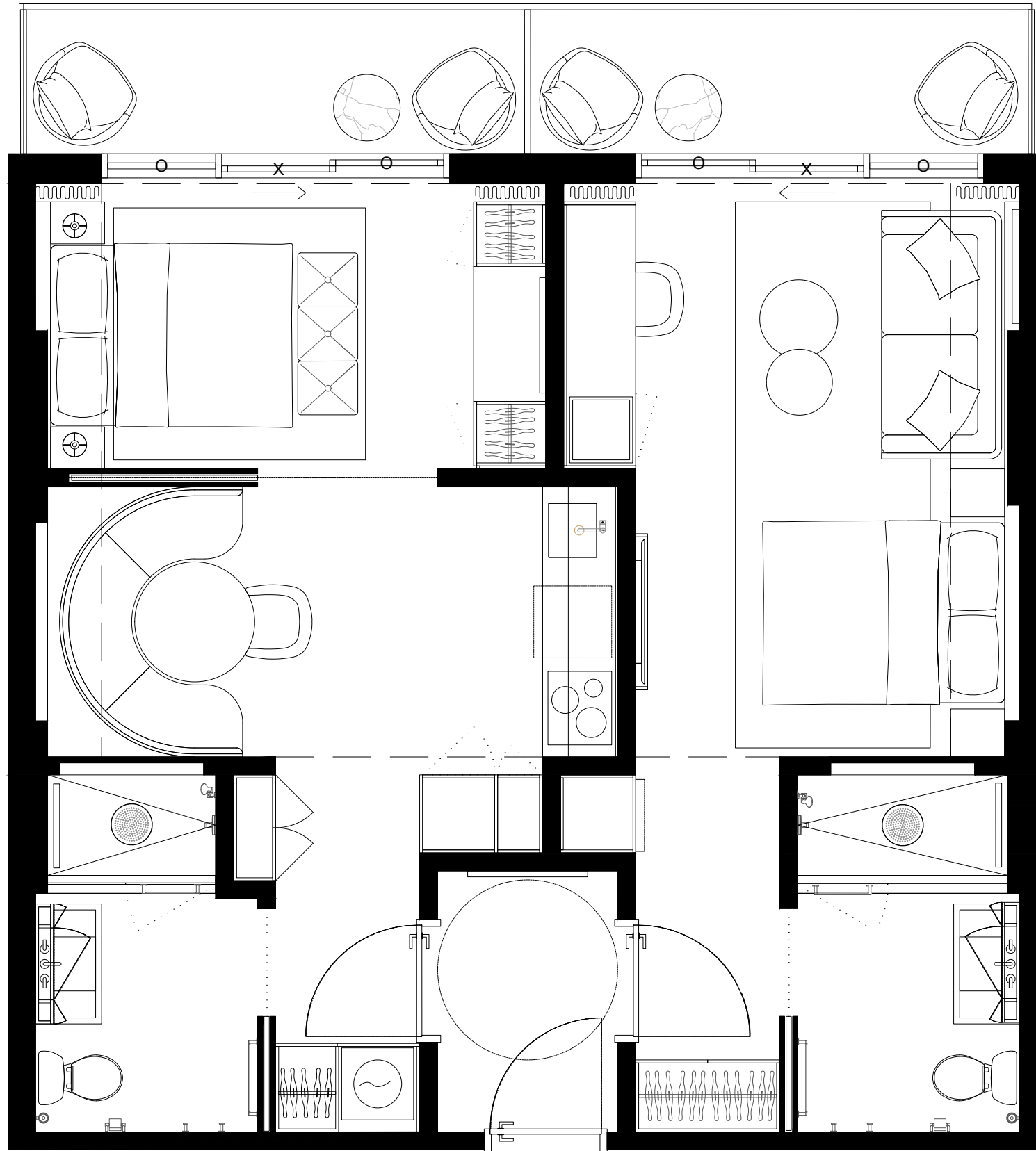
EDGEWATER MIAMI  
**VIDA**<sup>®</sup>  
 RESIDENCES

**UNIT TYPE E.3**

#507 #607 #707 #807

**2 BED + 2 BATH**

INTERIOR 774sf/72M2  
 EXTERIOR 116,5sf/11M2  
 TOTAL 890,5sf/83M2



These drawings are conceptual only and are for the convenience of reference. They should not be relied upon as representations, express or implied, of the final detail of the residences. Units shown are examples of unit types and may not depict actual units. Stated square footages are ranges for a particular unit type and are measured to the exterior boundaries of the exterior walls and the centerline of interior demising walls and in fact vary from the area that would be determined by using the description and definition of the unit set forth in the declaration (which generally only includes the interior airspace between the perimeter walls and excludes interior structural components). Note that measurements of rooms set forth on this floorplan are generally taken at the greatest points of each given room (as if the room were a perfect rectangle), without regards for any cutouts. Accordingly, the area of the actual room will typically be smaller than the product obtained by multiplying the stated length times width. All dimensions are approximate and may vary with actual construction, and all floor plans and development plans are subject to change.



EDGEWATER MIAMI

# VIDA®

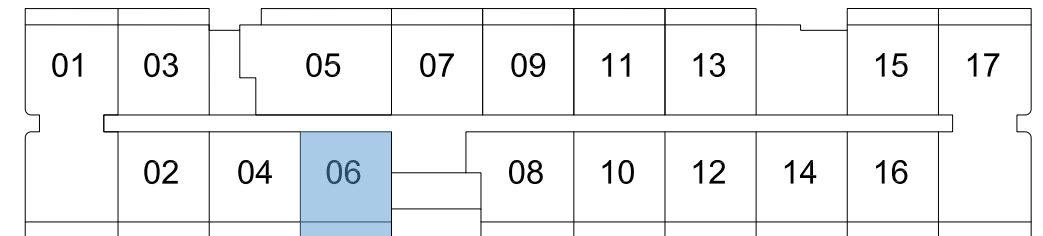
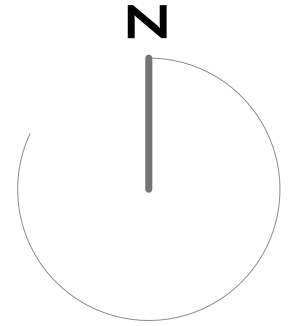
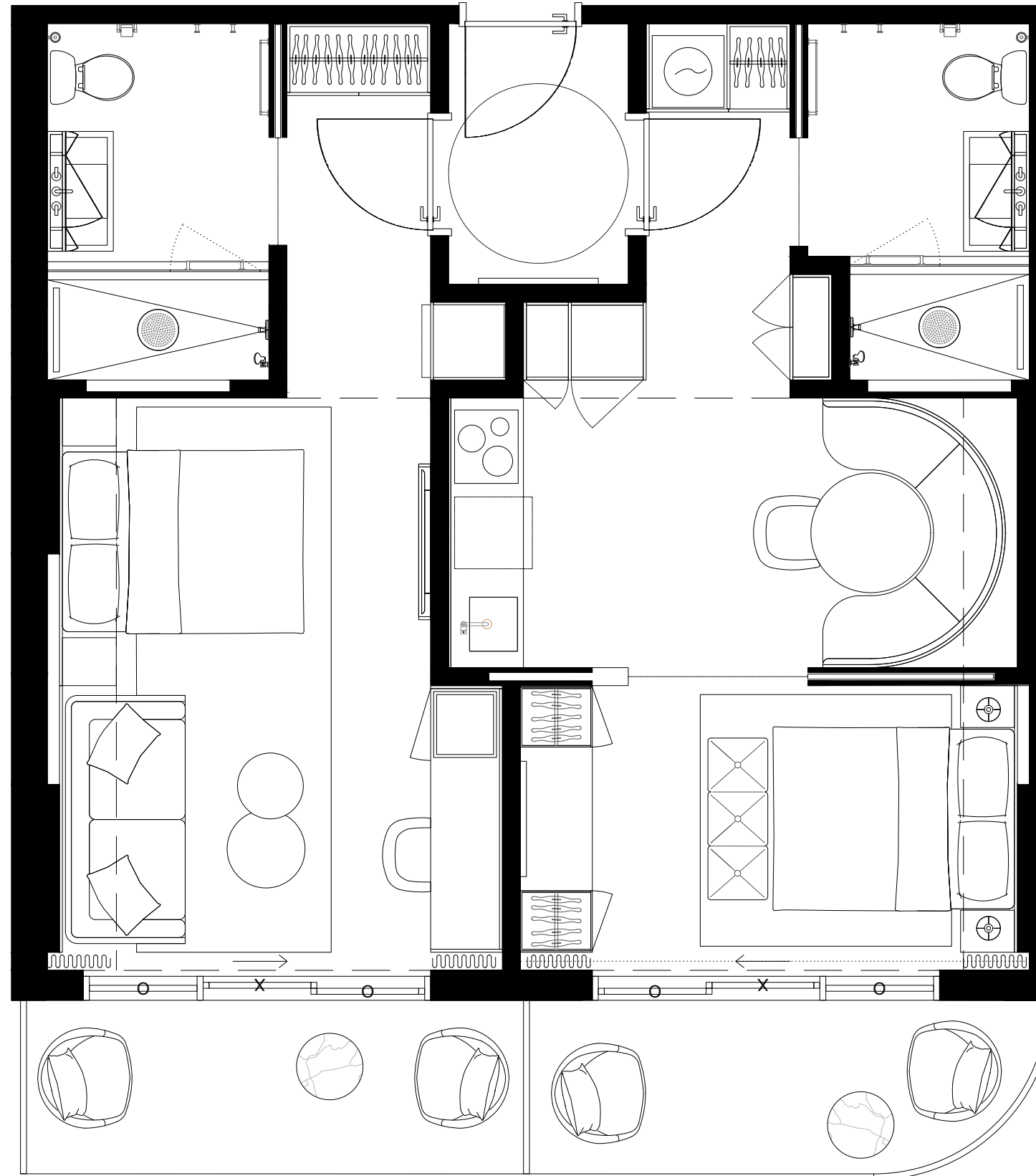
RESIDENCES

## UNIT TYPE E.5

#506 #606 #706 #806

### 2 BED + 2 BATH

INTERIOR	774sf/72M2
EXTERIOR	140sf/13M2
<b>TOTAL</b>	<b>914sf/84,9M2</b>



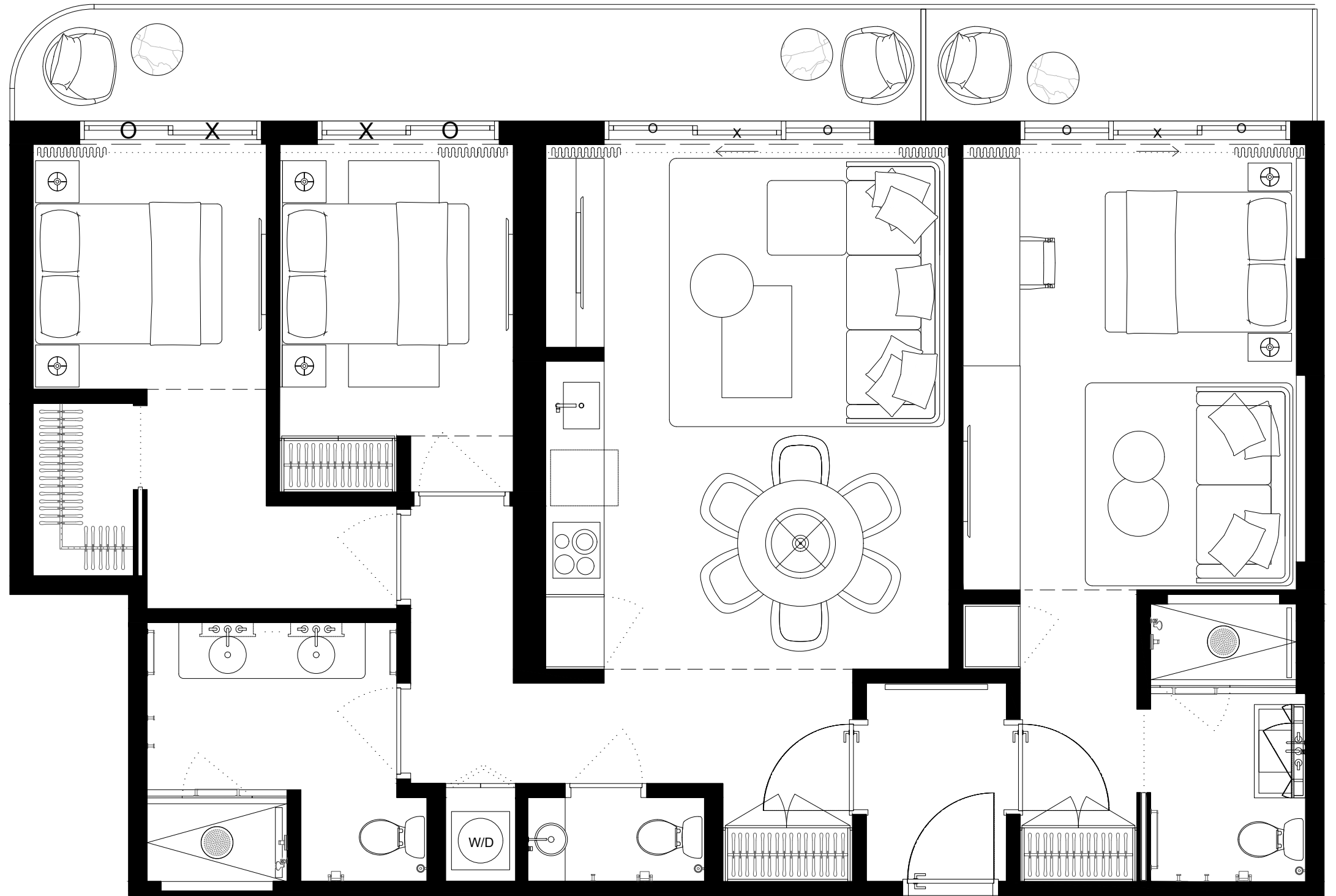
These drawings are conceptual only and are for the convenience of reference. They should not be relied upon as representations, express or implied, of the final detail of the residences. Units shown are examples of unit types and may not depict actual units. Stated square footages are ranges for a particular unit type and are measured to the exterior boundaries of the exterior walls and the centerline of interior demising walls and in fact vary from the area that would be determined by using the description and definition of the unit set forth in the declaration (which generally only includes the interior airspace between the perimeter walls and excludes interior structural components). Note that measurements of rooms set forth on this floorplan are generally taken at the greatest points of each given room (as if the room were a perfect rectangle), without regards for any cutouts. Accordingly, the area of the actual room will typically be smaller than the product obtained by multiplying the stated length times width. All dimensions are approximate and may vary with actual construction, and all floor plans and development plans are subject to change.

EDGEWATER MIAMI  
**VIDA**<sup>®</sup>  
 RESIDENCES

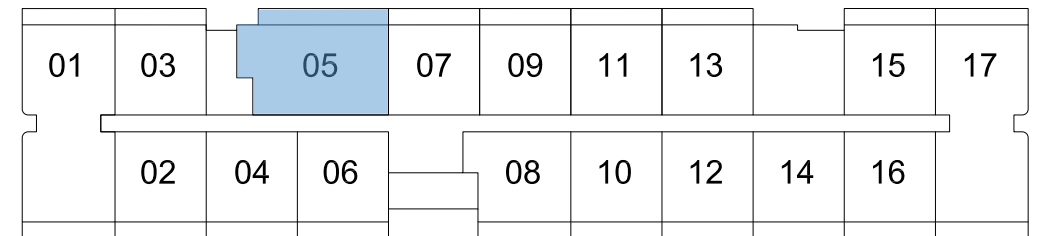
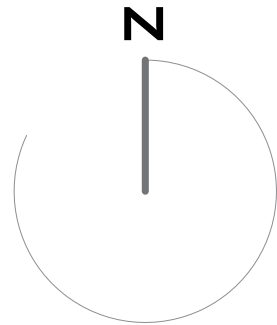
**UNIT TYPE G**  
 #505 #605 #705 #805

**3 BED + 2 BATH +  
 2 1/2 BATH**

INTERIOR 1233SF/114,6M<sup>2</sup>  
 EXTERIOR 193SF/18M<sup>2</sup>  
 TOTAL 1426SF/132,6M<sup>2</sup>



N



These drawings are conceptual only and are for the convenience of reference. They should not be relied upon as representations, express or implied, of the final detail of the residences. Units shown are examples of unit types and may not depict actual units. Stated square footages are ranges for a particular unit type and are measured to the exterior boundaries of the exterior walls and the centerline of interior demising walls and in fact vary from the area that would be determined by using the description and definition of the unit set forth in the declaration (which generally only includes the interior airspace between the perimeter walls and excludes interior structural components). Note that measurements of rooms set forth on this floorplan are generally taken at the greatest points of each given room (as if the room were a perfect rectangle), without regards for any cutouts. Accordingly, the area of the actual room will typically be smaller than the product obtained by multiplying the stated length times width. All dimensions are approximate and may vary with actual construction, and all floor plans and development plans are subject to change.

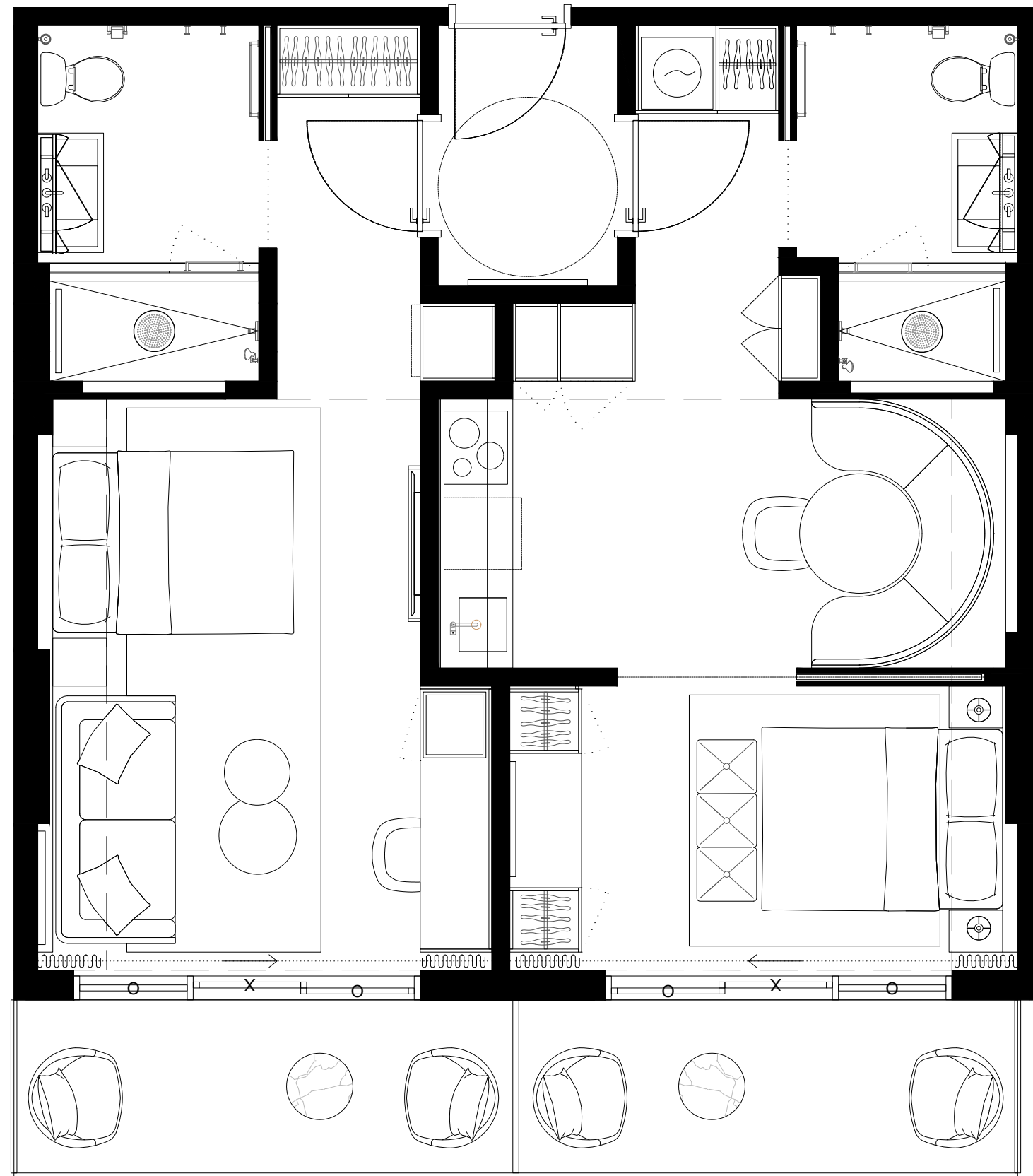
EDGEWATER MIAMI  
**VIDA**<sup>®</sup>  
 RESIDENCES

**UNIT TYPE E.4**

#504 #604 #704 #804

**2 BED + 2 BATH**

INTERIOR 774SF/72M2  
 EXTERIOR 140SF/13M2  
 TOTAL 914SF/84,9M2



01	03	05	07	09	11	13	15	17
02	04	06	08	10	12	14	16	



These drawings are conceptual only and are for the convenience of reference. They should not be relied upon as representations, express or implied, of the final detail of the residences. Units shown are examples of unit types and may not depict actual units. Stated square footages are ranges for a particular unit type and are measured to the exterior boundaries of the exterior walls and the centerline of interior demising walls and in fact vary from the area that would be determined by using the description and definition of the unit set forth in the declaration (which generally only includes the interior airspace between the perimeter walls and excludes interior structural components). Note that measurements of rooms set forth on this floorplan are generally taken at the greatest points of each given room (as if the room were a perfect rectangle), without regards for any cutouts. Accordingly, the area of the actual room will typically be smaller than the product obtained by multiplying the stated length times width. All dimensions are approximate and may vary with actual construction, and all floor plans and development plans are subject to change.

EDGEWATER MIAMI

**VIDA**<sup>®</sup>

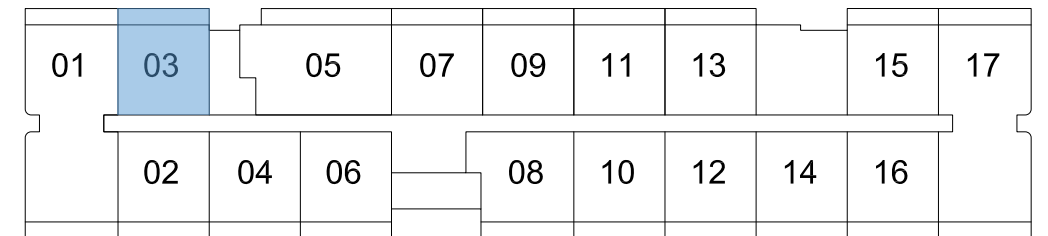
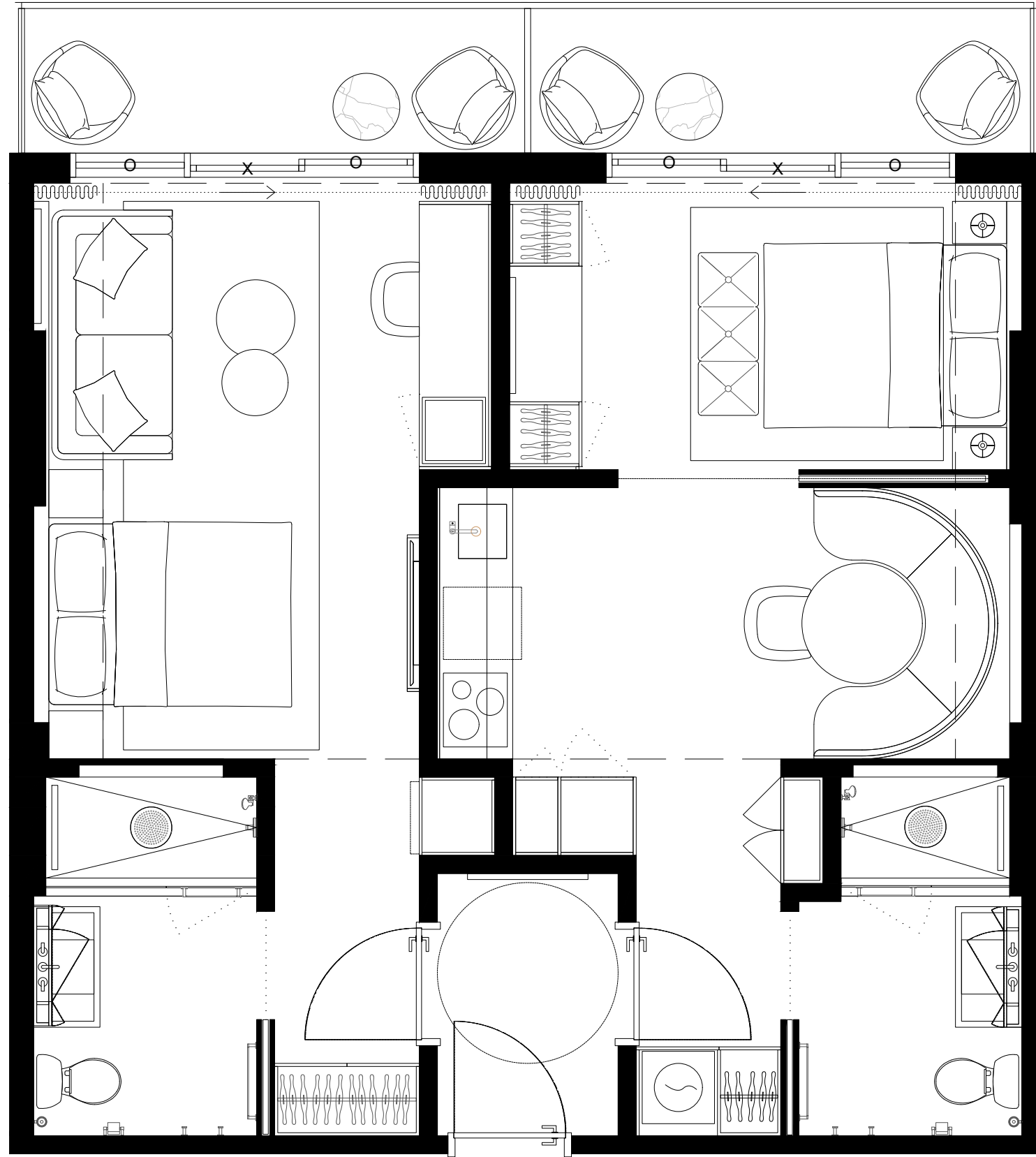
RESIDENCES

**UNIT TYPE E.3**

#503 #603 #703 #803

**2 BED + 2 BATH**

INTERIOR	774sf/72M2
EXTERIOR	116,5sf/11M2
<b>TOTAL</b>	<b>890,5sf/83M2</b>



These drawings are conceptual only and are for the convenience of reference. They should not be relied upon as representations, express or implied, of the final detail of the residences. Units shown are examples of unit types and may not depict actual units. Stated square footages are ranges for a particular unit type and are measured to the exterior boundaries of the exterior walls and the centerline of interior demising walls and in fact vary from the area that would be determined by using the description and definition of the unit set forth in the declaration (which generally only includes the interior airspace between the perimeter walls and excludes interior structural components). Note that measurements of rooms set forth on this floorplan are generally taken at the greatest points of each given room (as if the room were a perfect rectangle), without regards for any cutouts. Accordingly, the area of the actual room will typically be smaller than the product obtained by multiplying the stated length times width. All dimensions are approximate and may vary with actual construction, and all floor plans and development plans are subject to change.

EDGEWATER MIAMI

# VIDA®

RESIDENCES

## UNIT TYPE H.1

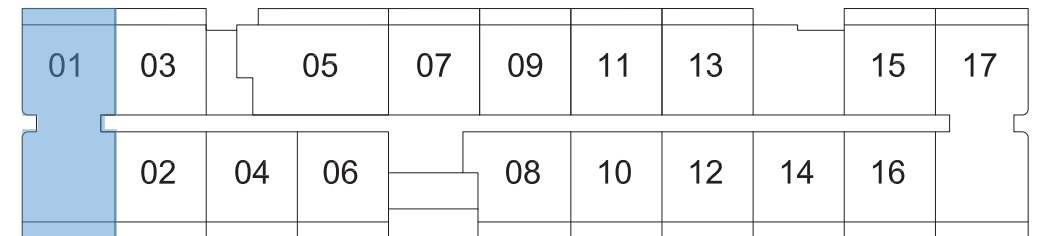
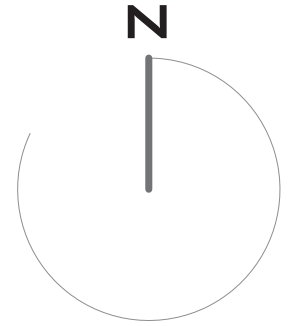
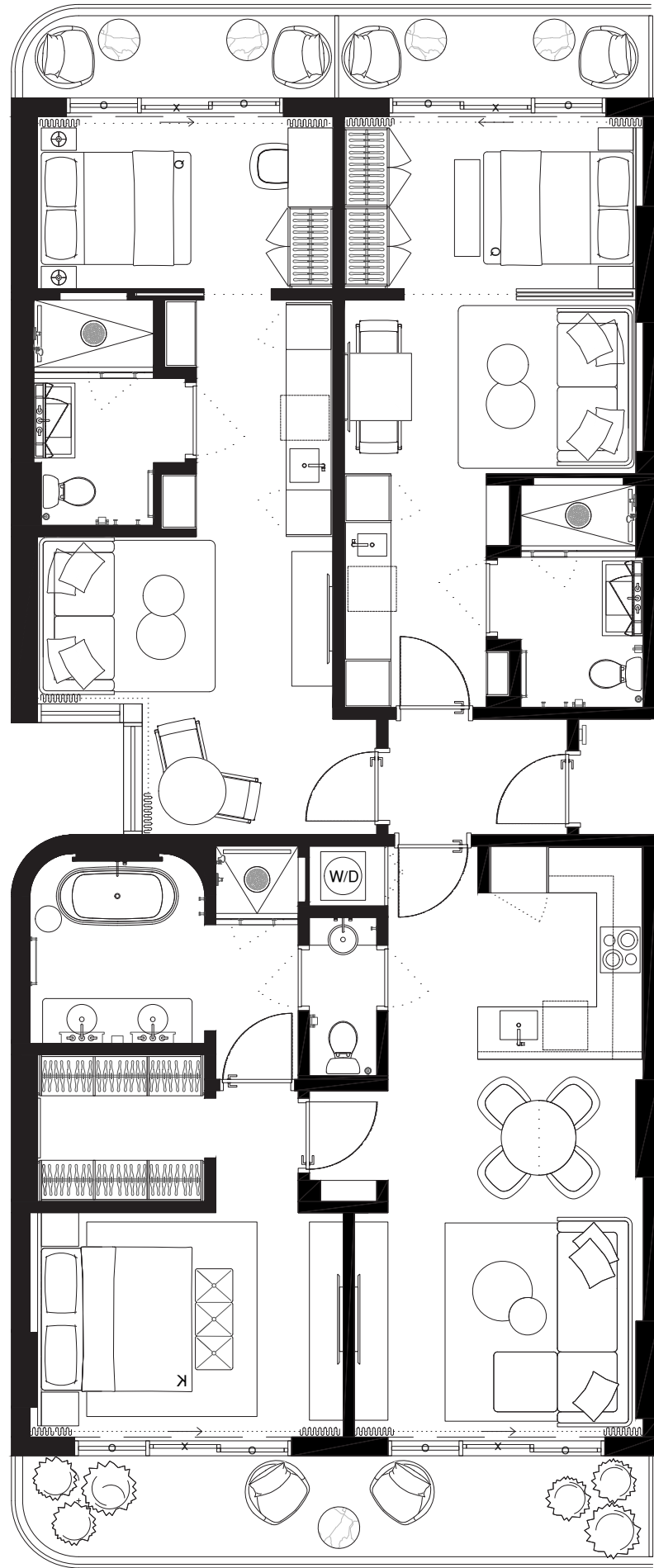
#501 #601 #701 #801

### 3 BED + 3 BATH

INTERIOR 1681sf/156,1m<sup>2</sup>

EXTERIOR 258sf/24m<sup>2</sup>

TOTAL 1939sf/180,1m<sup>2</sup>



These drawings are conceptual only and are for the convenience of reference. They should not be relied upon as representations, express or implied, of the final detail of the residences. Units shown are examples of unit types and may not depict actual units. Stated square footages are ranges for a particular unit type and are measured to the exterior boundaries of the exterior walls and the centerline of interior demising walls and in fact vary from the area that would be determined by using the description and definition of the unit set forth in the declaration (which generally only includes the interior airspace between the perimeter walls and excludes interior structural components). Note that measurements of rooms set forth on this floorplan are generally taken at the greatest points of each given room (as if the room were a perfect rectangle), without regards for any cutouts. Accordingly, the area of the actual room will typically be smaller than the product obtained by multiplying the stated length times width. All dimensions are approximate and may vary with actual construction, and all floor plans and development plans are subject to change.

EDGEWATER MIAMI

# VIDA®

RESIDENCES

## UNIT TYPE H.2

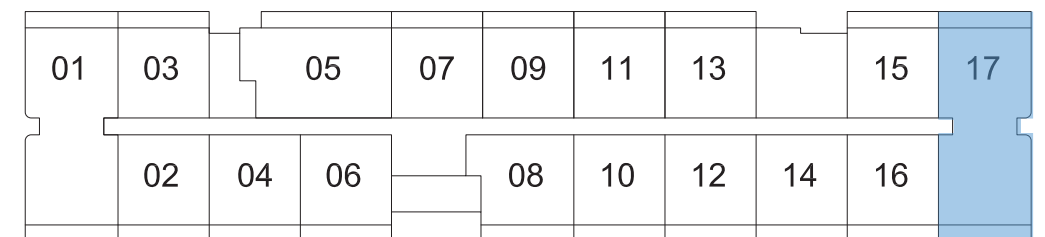
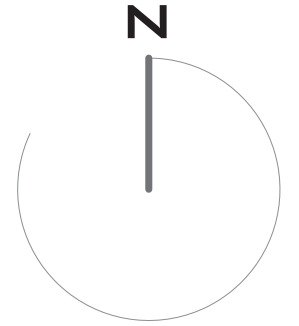
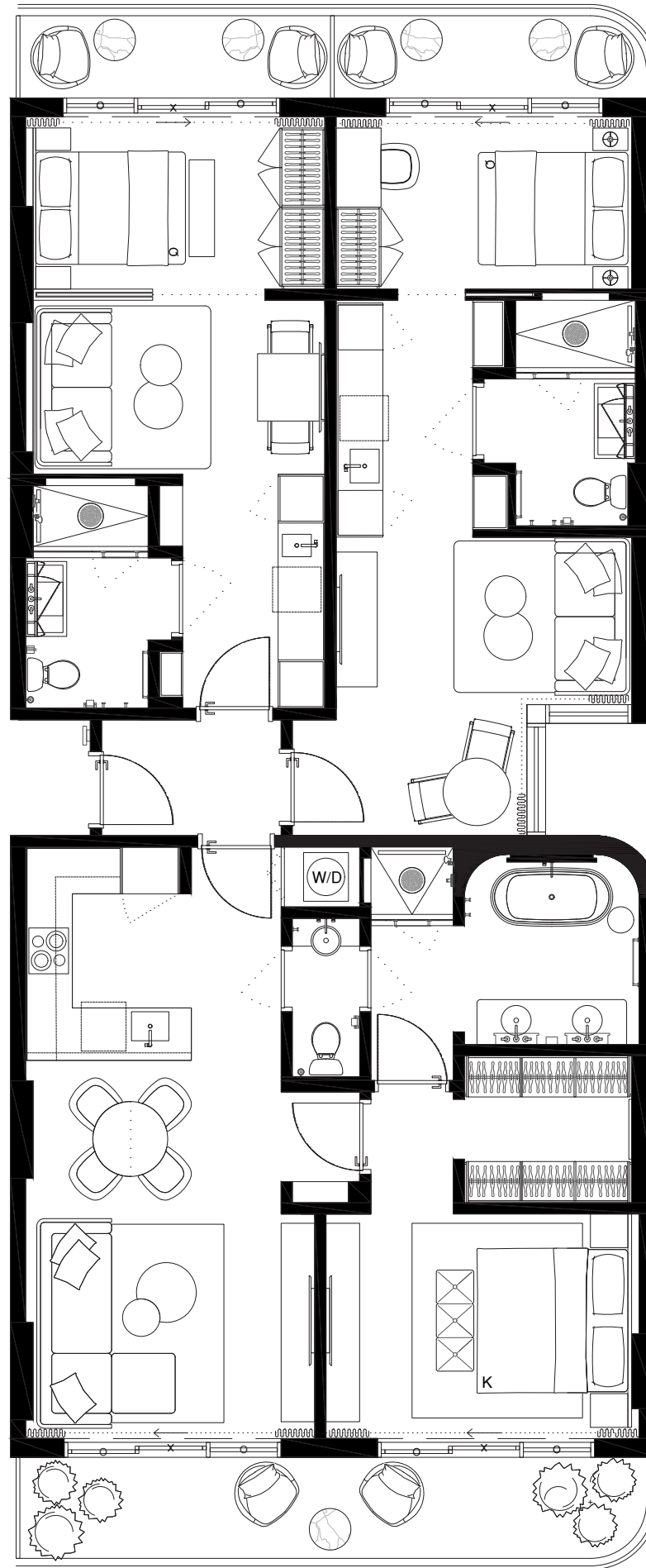
#517 #617 #717 #817

### 3 BED + 3 BATH

INTERIOR 1681sf/156,1m2

EXTERIOR 258sf/24m2

TOTAL 1939sf/180,1m2



These drawings are conceptual only and are for the convenience of reference. They should not be relied upon as representations, express or implied, of the final detail of the residences. Units shown are examples of unit types and may not depict actual units. Stated square footages are ranges for a particular unit type and are measured to the exterior boundaries of the exterior walls and the centerline of interior demising walls and in fact vary from the area that would be determined by using the description and definition of the unit set forth in the declaration (which generally only includes the interior airspace between the perimeter walls and excludes interior structural components). Note that measurements of rooms set forth on this floorplan are generally taken at the greatest points of each given room (as if the room were a perfect rectangle), without regards for any cutouts. Accordingly, the area of the actual room will typically be smaller than the product obtained by multiplying the stated length times width. All dimensions are approximate and may vary with actual construction, and all floor plans and development plans are subject to change.



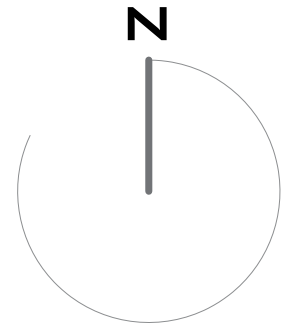
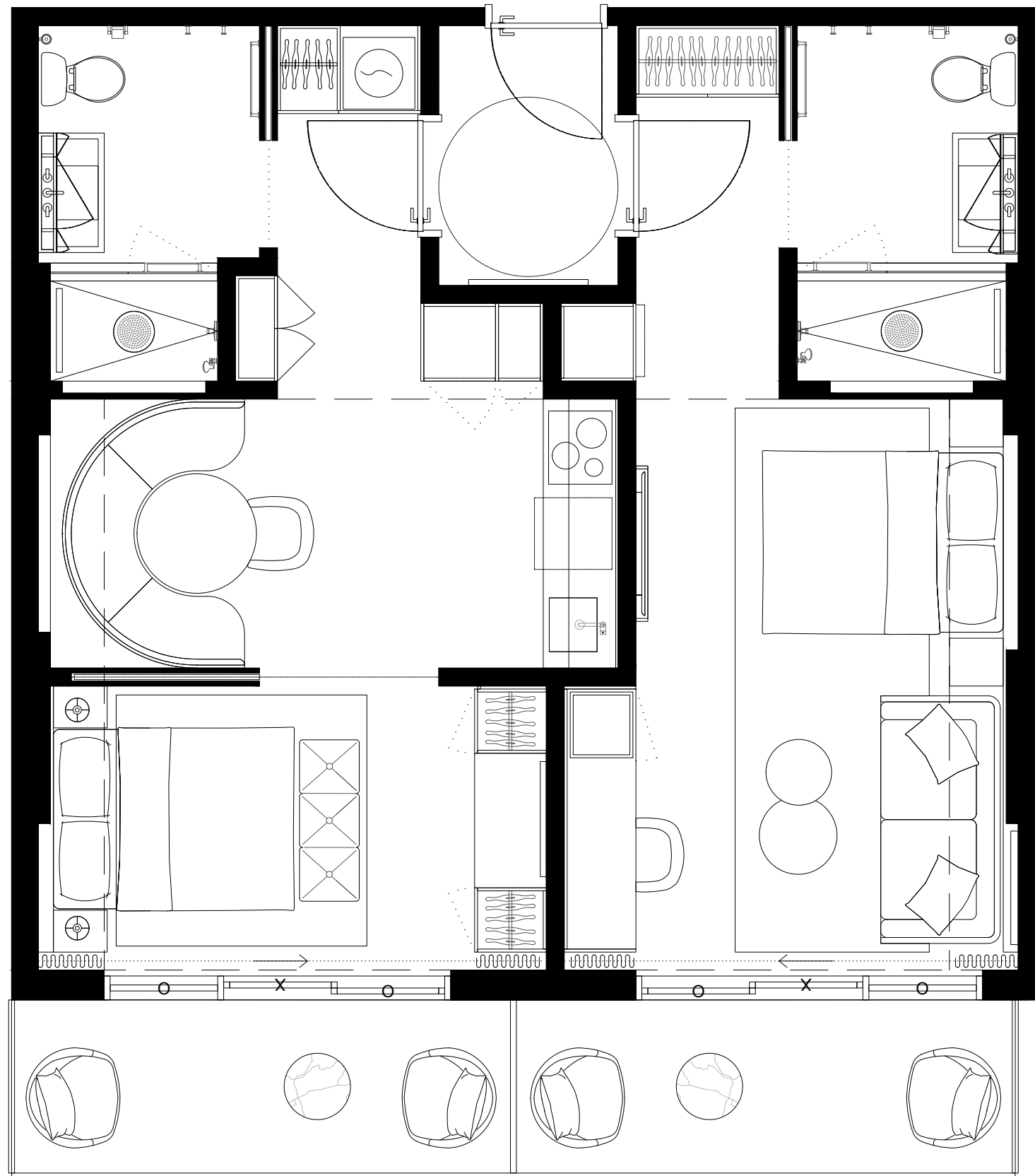
EDGEWATER MIAMI  
**VIDA**<sup>®</sup>  
 RESIDENCES

**UNIT TYPE E.4**

#502 #602 #702 #802

**2 BED + 2 BATH**

INTERIOR 774SF/72M<sup>2</sup>  
 EXTERIOR 140SF/13M<sup>2</sup>  
 TOTAL 914SF/84,9M<sup>2</sup>



01	03	05	07	09	11	13	15	17
	02	04	06	08	10	12	14	16

These drawings are conceptual only and are for the convenience of reference. They should not be relied upon as representations, express or implied, of the final detail of the residences. Units shown are examples of unit types and may not depict actual units. Stated square footages are ranges for a particular unit type and are measured to the exterior boundaries of the exterior walls and the centerline of interior demising walls and in fact vary from the area that would be determined by using the description and definition of the unit set forth in the declaration (which generally only includes the interior airspace between the perimeter walls and excludes interior structural components). Note that measurements of rooms set forth on this floorplan are generally taken at the greatest points of each given room (as if the room were a perfect rectangle), without regards for any cutouts. Accordingly, the area of the actual room will typically be smaller than the product obtained by multiplying the stated length times width. All dimensions are approximate and may vary with actual construction, and all floor plans and development plans are subject to change.