

B505

C A R E T T A

4 bed
 5.1 bath
 Indoor: 5,470 SF
 Outdoor: 2,210 SF
 Total: 7,680 SF
 2,210 SF Uncovered Terrace

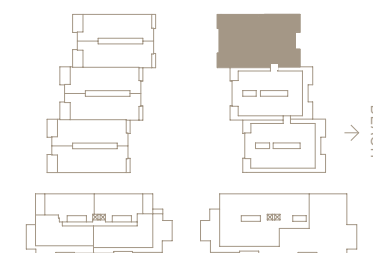


↑
 Privacy Screen
 24" Wall With Opaque Glass To 6' 0"

Stated dimensions are measured following BOMA standards to the exterior boundaries of the exterior walls and the centerline of interior demising walls (without deductions for interior columns, shear walls or shafts) and in fact vary from the dimensions that would be determined by using the description and definition of the "Unit" set forth in the Declaration (which generally only includes the interior airspace between the perimeter walls and excludes interior structural components, shear walls and shafts). For the calculation of the unit area following the definition of the unit set forth in the Declaration, see Exhibit "3-1" of the Declaration. Additionally, measurements of rooms set forth on any floor plan are generally taken at the greatest points of each given room (as if the room were a perfect rectangle), without regard for any cutouts. Accordingly, the area of the actual room will typically be smaller than the product obtained by multiplying the stated length times width. All dimensions are approximate, and all floor plans and development plans are subject to change.



LiveCaretta.com



B501

C A R E T T A

4 bed
 5.1 bath
 Indoor: 5,590 SF
 Outdoor: 2,210 SF
 Total: 7,800 SF
 2,210 SF Uncovered Terrace



Stated dimensions are measured following BOMA standards to the exterior boundaries of the exterior walls and the centerline of interior demising walls (without deductions for interior columns, shear walls or shafts) and in fact vary from the dimensions that would be determined by using the description and definition of the "Unit" set forth in the Declaration (which generally only includes the interior airspace between the perimeter walls and excludes interior structural components, shear walls and shafts). For the calculation of the unit area following the definition of the unit set forth in the Declaration, see Exhibit "3-1" of the Declaration. Additionally, measurements of rooms set forth on any floor plan are generally taken at the greatest points of each given room (as if the room were a perfect rectangle), without regard for any cutouts. Accordingly, the area of the actual room will typically be smaller than the product obtained by multiplying the stated length times width. All dimensions are approximate, and all floor plans and development plans are subject to change.



LiveCaretta.com



jdl.

A102

4 bed+study
6.1 bath

Indoor: 5,340 SF
Outdoor: 1,540 SF
Total: 6,880 SF

660 SF Covered Terrace
880 SF Uncovered Terrace/Lawn

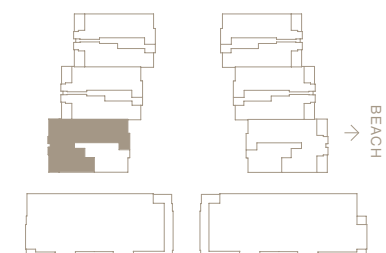
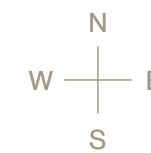
C A R E T T A



Stated dimensions are measured following BOMA standards to the exterior boundaries of the exterior walls and the centerline of interior demising walls (without deductions for interior columns, shear walls or shafts) and in fact vary from the dimensions that would be determined by using the description and definition of the "Unit" set forth in the Declaration (which generally only includes the interior airspace between the perimeter walls and excludes interior structural components, shear walls and shafts). For the calculation of the unit area, following the definition of the unit set forth in the Declaration, see Exhibit "3-1" of the Declaration. Additionally, measurements of rooms set forth on any floor plan are generally taken at the greatest points of each given room (as if the room were a perfect rectangle), without regard for any cutouts. Accordingly, the area of the actual room will typically be smaller than the product obtained by multiplying the stated length times width. All dimensions are approximate, and all floor plans and development plans are subject to change.



LiveCaretta.com



jdl.

A102

4 bed+study
6.1 bath

Indoor: 5,340 SF
Outdoor: 1,540 SF
Total: 6,880 SF

660 SF Covered Terrace
880 SF Uncovered Terrace/Lawn

C A R E T T A



Stated dimensions are measured following BOMA standards to the exterior boundaries of the exterior walls and the centerline of interior demising walls (without deductions for interior columns, shear walls or shafts) and in fact vary from the dimensions that would be determined by using the description and definition of the "Unit" set forth in the Declaration (which generally only includes the interior airspace between the perimeter walls and excludes interior structural components, shear walls and shafts). For the calculation of the unit area, following the definition of the unit set forth in the Declaration, see Exhibit "3-1" of the Declaration. Additionally, measurements of rooms set forth on any floor plan are generally taken at the greatest points of each given room (as if the room were a perfect rectangle), without regard for any cutouts. Accordingly, the area of the actual room will typically be smaller than the product obtained by multiplying the stated length times width. All dimensions are approximate, and all floor plans and development plans are subject to change.



LiveCaretta.com



jdl.

A201

3 bed+study
4 bath

Indoor: 3,540 SF
Outdoor: 425 SF
Total: 3,965 SF
425 SF Covered Terrace

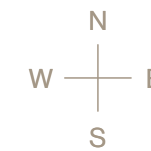
C A R E T T A



Stated dimensions are measured following BOMA standards to the exterior boundaries of the exterior walls and the centerline of interior demising walls (without deductions for interior columns, shear walls or shafts) and in fact vary from the dimensions that would be determined by using the description and definition of the "Unit" set forth in the Declaration (which generally only includes the interior airspace between the perimeter walls and excludes interior structural components, shear walls and shafts). For the calculation of the unit area following the definition of the unit set forth in the Declaration, see Exhibit "3-1" of the Declaration. Additionally, measurements of rooms set forth on any floor plan are generally taken at the greatest points of each given room (as if the room were a perfect rectangle), without regard for any cutouts. Accordingly, the area of the actual room will typically be smaller than the product obtained by multiplying the stated length times width. All dimensions are approximate, and all floor plans and development plans are subject to change.



LiveCaretta.com



jdl.

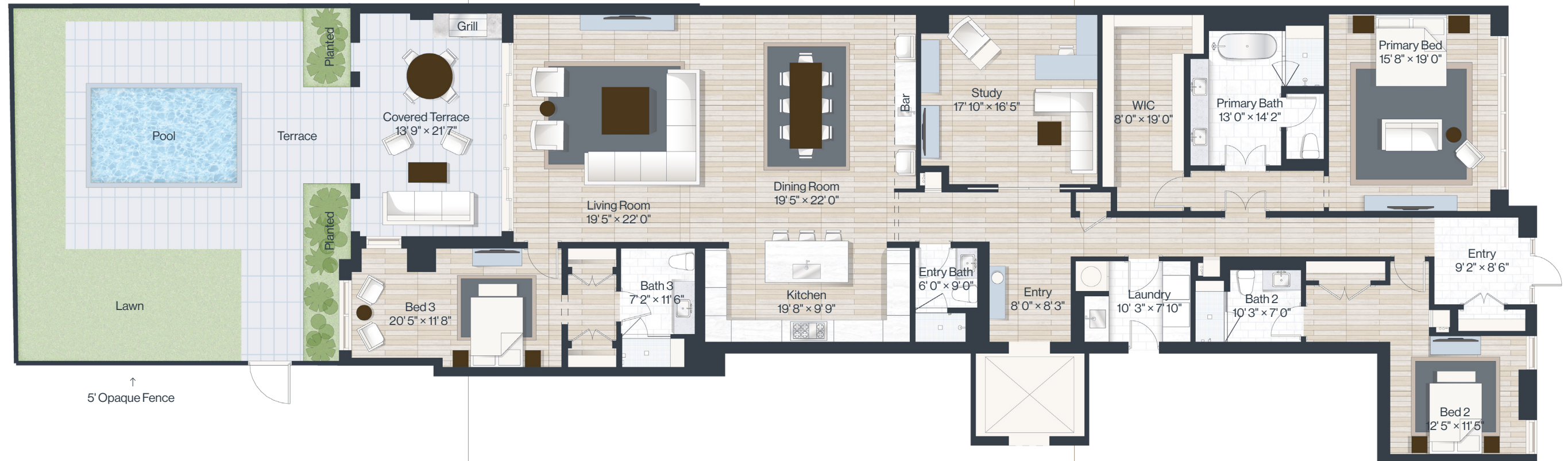
A104

3 bed+study
4 bath

Indoor: 3,530 SF
Outdoor: 1,370 SF
Total: 4,900 SF

290 SF Covered Terrace
1,080 SF Uncovered Terrace/Lawn

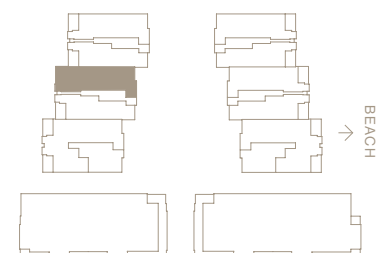
C A R E T T A



Stated dimensions are measured following BOMA standards to the exterior boundaries of the exterior walls and the centerline of interior demising walls (without deductions for interior columns, shear walls or shafts) and in fact vary from the dimensions that would be determined by using the description and definition of the "Unit" set forth in the Declaration (which generally only includes the interior airspace between the perimeter walls and excludes interior structural components, shear walls and shafts). For the calculation of the unit area following the definition of the unit set forth in the Declaration, see Exhibit "3-1" of the Declaration. Additionally, measurements of rooms set forth on any floor plan are generally taken at the greatest points of each given room (as if the room were a perfect rectangle), without regard for any cutouts. Accordingly, the area of the actual room will typically be smaller than the product obtained by multiplying the stated length times width. All dimensions are approximate, and all floor plans and development plans are subject to change.



LiveCaretta.com



jdl.

A106

3 bed+study
4 bath

Indoor: 3,580 SF
Outdoor: 1,990 SF
Total: 5,570 SF

290 SF Covered Terrace
1,700 SF Uncovered Terrace/Lawn

C A R E T T A

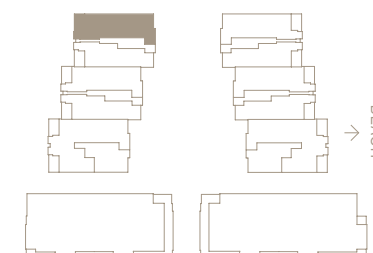


↑
5' Opaque Fence

Stated dimensions are measured following BOMA standards to the exterior boundaries of the exterior walls and the centerline of interior demising walls (without deductions for interior columns, shear walls or shafts) and in fact vary from the dimensions that would be determined by using the description and definition of the "Unit" set forth in the Declaration (which generally only includes the interior airspace between the perimeter walls and excludes interior structural components, shear walls and shafts). For the calculation of the unit area following the definition of the unit set forth in the Declaration, see Exhibit "3-1" of the Declaration. Additionally, measurements of rooms set forth on any floor plan are generally taken at the greatest points of each given room (as if the room were a perfect rectangle), without regard for any cutouts. Accordingly, the area of the actual room will typically be smaller than the product obtained by multiplying the stated length times width. All dimensions are approximate, and all floor plans and development plans are subject to change.



LiveCaretta.com

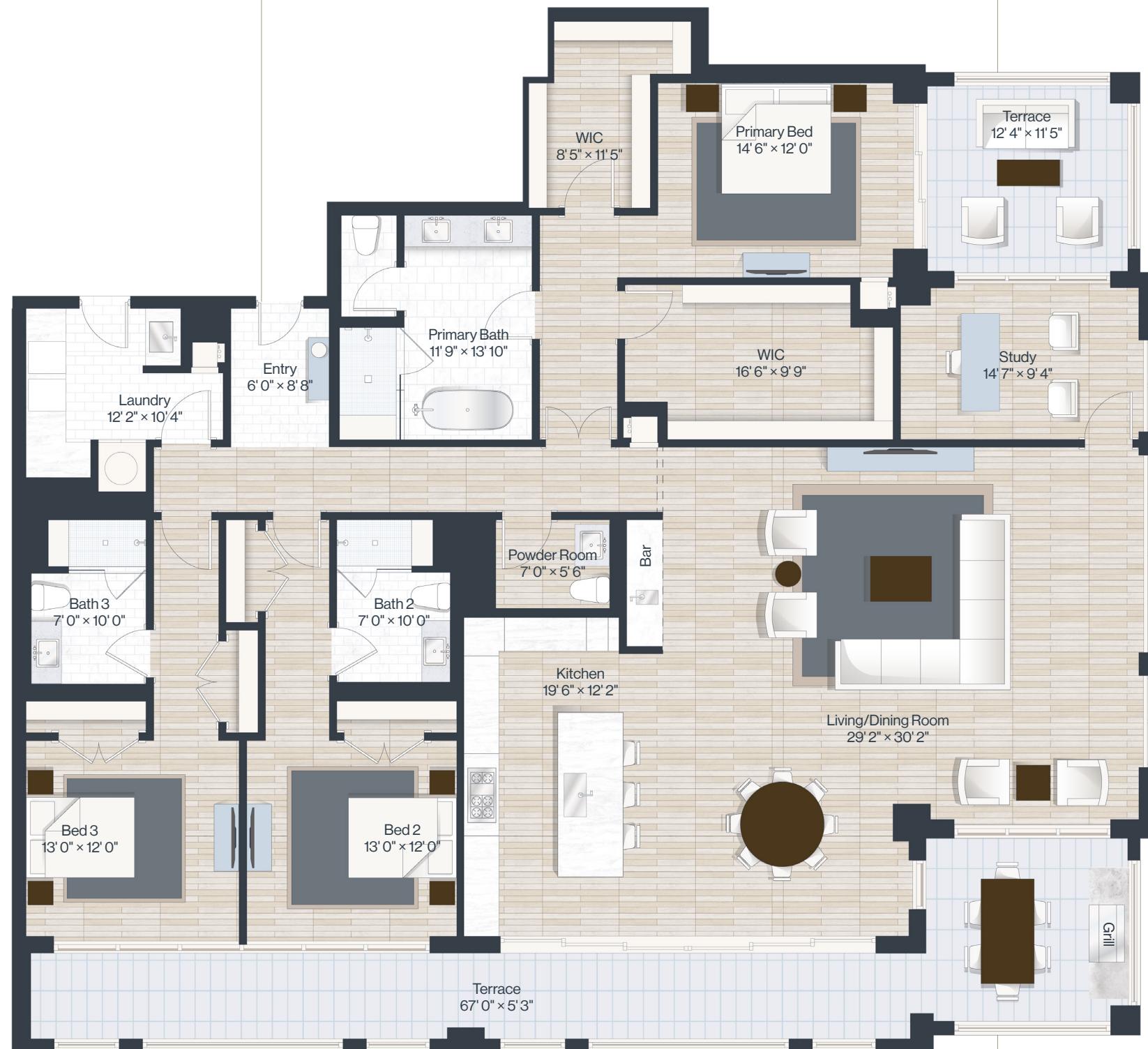


jdl.

C202

C A R E T T A

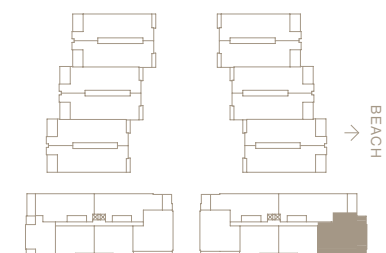
3 bed+study
 3.1 bath
 Indoor: 3,135 SF
 Outdoor: 430 SF
 Total: 3,565 SF
 430 SF Covered Terrace



Stated dimensions are measured following BOMA standards to the exterior boundaries of the exterior walls and the centerline of interior demising walls (without deductions for interior columns, shear walls or shafts) and in fact vary from the dimensions that would be determined by using the description and definition of the "Unit" set forth in the Declaration (which generally only includes the interior airspace between the perimeter walls and excludes interior structural components, shear walls and shafts). For the calculation of the unit area following the definition of the unit set forth in the Declaration, see Exhibit "3-1" of the Declaration. Additionally, measurements of rooms set forth on any floor plan are generally taken at the greatest points of each given room (as if the room were a perfect rectangle), without regard for any cutouts. Accordingly, the area of the actual room will typically be smaller than the product obtained by multiplying the stated length times width. All dimensions are approximate, and all floor plans and development plans are subject to change.



LiveCaretta.com



jdl.

A301

3 bed+study
4 bath

Indoor: 3,450 SF
Outdoor: 500 SF
Total: 3,950 SF

300 SF Covered Terrace
200 SF Uncovered Terrace

C A R E T T A



Stated dimensions are measured following BOMA standards to the exterior boundaries of the exterior walls and the centerline of interior demising walls (without deductions for interior columns, shear walls or shafts) and in fact vary from the dimensions that would be determined by using the description and definition of the "Unit" set forth in the Declaration (which generally only includes the interior airspace between the perimeter walls and excludes interior structural components, shear walls and shafts). For the calculation of the unit area following the definition of the unit set forth in the Declaration, see Exhibit "3-1" of the Declaration. Additionally, measurements of rooms set forth on any floor plan are generally taken at the greatest points of each given room (as if the room were a perfect rectangle), without regard for any cutouts. Accordingly, the area of the actual room will typically be smaller than the product obtained by multiplying the stated length times width. All dimensions are approximate, and all floor plans and development plans are subject to change.



LiveCaretta.com



jdl.

A202

3 bed+study
4 bath

Indoor: 3,490 SF
Outdoor: 415 SF
Total: 3,905 SF
415 SF Covered Terrace

C A R E T T A



Stated dimensions are measured following BOMA standards to the exterior boundaries of the exterior walls and the centerline of interior demising walls (without deductions for interior columns, shear walls or shafts) and in fact vary from the dimensions that would be determined by using the description and definition of the "Unit" set forth in the Declaration (which generally only includes the interior airspace between the perimeter walls and excludes interior structural components, shear walls and shafts). For the calculation of the unit area following the definition of the unit set forth in the Declaration, see Exhibit "3-1" of the Declaration. Additionally, measurements of rooms set forth on any floor plan are generally taken at the greatest points of each given room (as if the room were a perfect rectangle), without regard for any cutouts. Accordingly, the area of the actual room will typically be smaller than the product obtained by multiplying the stated length times width. All dimensions are approximate, and all floor plans and development plans are subject to change.



LiveCaretta.com



jdl.

D201

3 bed
3.1 bath

Indoor: 2,840 SF
Outdoor: 340 SF
Total: 3,180 SF
340 SF Covered Terrace

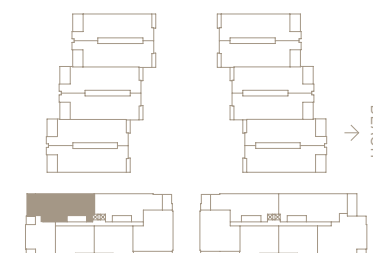
C A R E T T A



Stated dimensions are measured following BOMA standards to the exterior boundaries of the exterior walls and the centerline of interior demising walls (without deductions for interior columns, shear walls or shafts) and in fact vary from the dimensions that would be determined by using the description and definition of the "Unit" set forth in the Declaration (which generally only includes the interior airspace between the perimeter walls and excludes interior structural components, shear walls and shafts). For the calculation of the unit area following the definition of the unit set forth in the Declaration, see Exhibit "3-1" of the Declaration. Additionally, measurements of rooms set forth on any floor plan are generally taken at the greatest points of each given room (as if the room were a perfect rectangle), without regard for any cutouts. Accordingly, the area of the actual room will typically be smaller than the product obtained by multiplying the stated length times width. All dimensions are approximate, and all floor plans and development plans are subject to change.



LiveCaretta.com



jdl.

C406

3 bed
3.1 bath

Indoor: 2,585 SF
Outdoor: 275 SF
Total: 2,860 SF
275 SF Uncovered Terrace

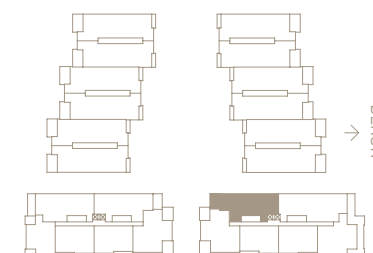
C A R E T T A



Stated dimensions are measured following BOMA standards to the exterior boundaries of the exterior walls and the centerline of interior demising walls (without deductions for interior columns, shear walls or shafts) and in fact vary from the dimensions that would be determined by using the description and definition of the "Unit" set forth in the Declaration (which generally only includes the interior airspace between the perimeter walls and excludes interior structural components, shear walls and shafts). For the calculation of the unit area following the definition of the unit set forth in the Declaration, see Exhibit "3-1" of the Declaration. Additionally, measurements of rooms set forth on any floor plan are generally taken at the greatest points of each given room (as if the room were a perfect rectangle), without regard for any cutouts. Accordingly, the area of the actual room will typically be smaller than the product obtained by multiplying the stated length times width. All dimensions are approximate, and all floor plans and development plans are subject to change.



LiveCaretta.com



jdl.

C405

3 bed
3 bath

Indoor: 2,530 SF

Outdoor: 525 SF

Total: 3,055 SF

525 SF Uncovered Terrace

C A R E T T A



Stated dimensions are measured following BOMA standards to the exterior boundaries of the exterior walls and the centerline of interior demising walls (without deductions for interior columns, shear walls or shafts) and in fact vary from the dimensions that would be determined by using the description and definition of the "Unit" set forth in the Declaration (which generally only includes the interior airspace between the perimeter walls and excludes interior structural components, shear walls and shafts). For the calculation of the unit area following the definition of the unit set forth in the Declaration, see Exhibit "3-1" of the Declaration. Additionally, measurements of rooms set forth on any floor plan are generally taken at the greatest points of each given room (as if the room were a perfect rectangle), without regard for any cutouts. Accordingly, the area of the actual room will typically be smaller than the product obtained by multiplying the stated length times width. All dimensions are approximate, and all floor plans and development plans are subject to change.



LiveCaretta.com



jdl.

C305

3 bed+study

3.1 bath

Indoor: 2,890 SF

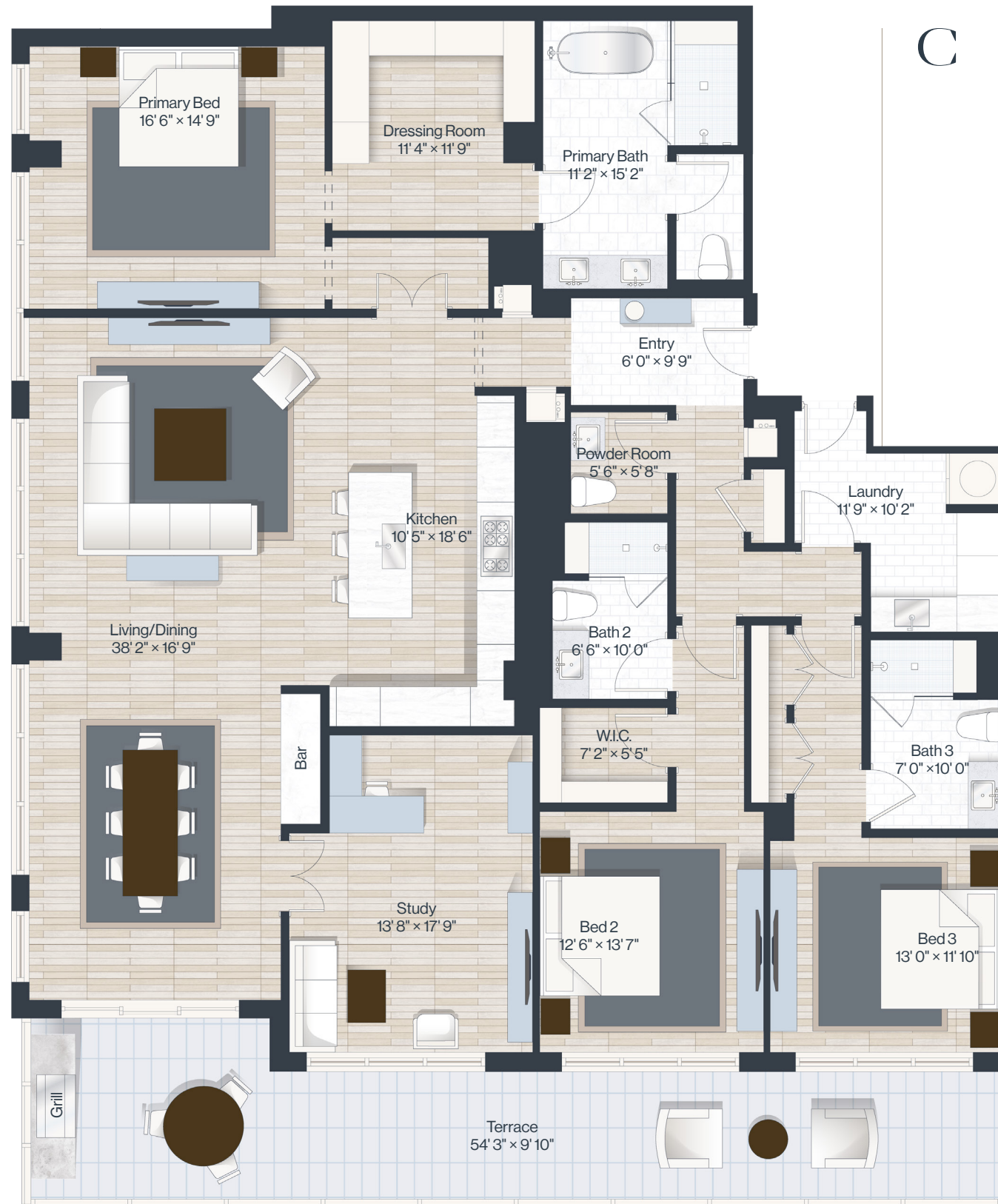
Outdoor: 415 SF

Total: 3,305 SF

75 SF Covered Terrace

340 SF Uncovered Terrace

C A R E T T A

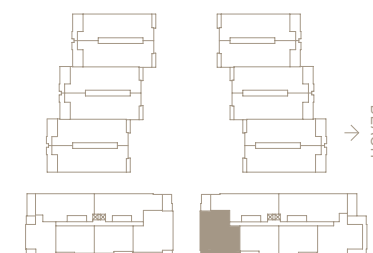


Privacy Screen
← 42" Wall With Opaque Glass To 6'0"

Stated dimensions are measured following BOMA standards to the exterior boundaries of the exterior walls and the centerline of interior demising walls (without deductions for interior columns, shear walls or shafts) and in fact vary from the dimensions that would be determined by using the description and definition of the "Unit" set forth in the Declaration (which generally only includes the interior airspace between the perimeter walls and excludes interior structural components, shear walls and shafts). For the calculation of the unit area following the definition of the unit set forth in the Declaration, see Exhibit "3-1" of the Declaration. Additionally, measurements of rooms set forth on any floor plan are generally taken at the greatest points of each given room (as if the room were a perfect rectangle), without regard for any cutouts. Accordingly, the area of the actual room will typically be smaller than the product obtained by multiplying the stated length times width. All dimensions are approximate, and all floor plans and development plans are subject to change.



LiveCaretta.com



jdl.

C306

3 bed
3.1 bath

Indoor: 2,875 SF
Outdoor: 290 SF
Total: 3,165 SF
290 SF Uncovered Terrace

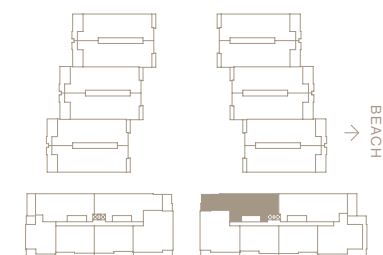
C A R E T T A



Stated dimensions are measured following BOMA standards to the exterior boundaries of the exterior walls and the centerline of interior demising walls (without deductions for interior columns, shear walls or shafts) and in fact vary from the dimensions that would be determined by using the description and definition of the "Unit" set forth in the Declaration (which generally only includes the interior airspace between the perimeter walls and excludes interior structural components, shear walls and shafts). For the calculation of the unit area following the definition of the unit set forth in the Declaration, see Exhibit "3-1" of the Declaration. Additionally, measurements of rooms set forth on any floor plan are generally taken at the greatest points of each given room (as if the room were a perfect rectangle), without regard for any cutouts. Accordingly, the area of the actual room will typically be smaller than the product obtained by multiplying the stated length times width. All dimensions are approximate, and all floor plans and development plans are subject to change.



LiveCaretta.com



jdl.

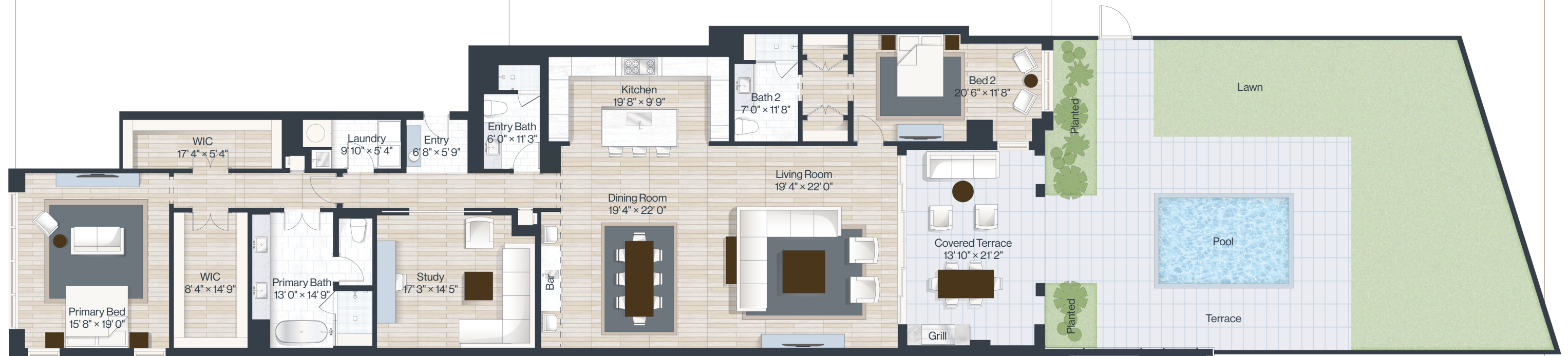
B105

2 bed+study
3 bath

Indoor: 2,935 SF
Outdoor: 1,890 SF
Total: 4,825 SF

290 SF Covered Terrace
1,600 SF Uncovered Terrace/Lawn

C A R E T T A

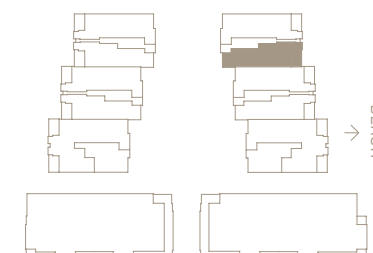


↑
5' Opaque Fence

Stated dimensions are measured following BOMA standards to the exterior boundaries of the exterior walls and the centerline of interior demising walls (without deductions for interior columns, shear walls or shafts) and in fact vary from the dimensions that would be determined by using the description and definition of the "Unit" set forth in the Declaration (which generally only includes the interior airspace between the perimeter walls and excludes interior structural components, shear walls and shafts). For the calculation of the unit area following the definition of the unit set forth in the Declaration, see Exhibit "3-1" of the Declaration. Additionally, measurements of rooms set forth on any floor plan are generally taken at the greatest points of each given room (as if the room were a perfect rectangle), without regard for any cutouts. Accordingly, the area of the actual room will typically be smaller than the product obtained by multiplying the stated length times width. All dimensions are approximate, and all floor plans and development plans are subject to change.



LiveCaretta.com



C205

3bed+study
 3.1bath
 Indoor: 2,940 SF
 Outdoor: 400 SF
 Total: 3,340 SF
 400 SF Covered Terrace

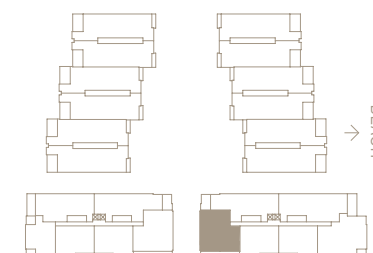
C A R E T T A



Stated dimensions are measured following BOMA standards to the exterior boundaries of the exterior walls and the centerline of interior demising walls (without deductions for interior columns, shear walls or shafts) and in fact vary from the dimensions that would be determined by using the description and definition of the "Unit" set forth in the Declaration (which generally only includes the interior airspace between the perimeter walls and excludes interior structural components, shear walls and shafts). For the calculation of the unit area following the definition of the unit set forth in the Declaration, see Exhibit "3-1" of the Declaration. Additionally, measurements of rooms set forth on any floor plan are generally taken at the greatest points of each given room (as if the room were a perfect rectangle), without regard for any cutouts. Accordingly, the area of the actual room will typically be smaller than the product obtained by multiplying the stated length times width. All dimensions are approximate, and all floor plans and development plans are subject to change.



LiveCaretta.com



jdl.

C206

3 bed
3.1 bath

Indoor: 2,875 SF
Outdoor: 270 SF
Total: 3,145 SF
270 SF Covered Terrace

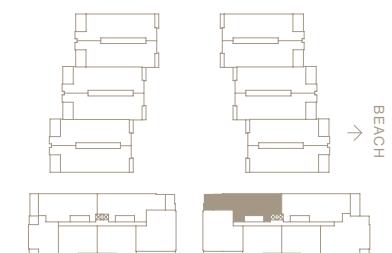
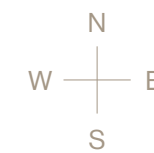
C A R E T T A



Stated dimensions are measured following BOMA standards to the exterior boundaries of the exterior walls and the centerline of interior demising walls (without deductions for interior columns, shear walls or shafts) and in fact vary from the dimensions that would be determined by using the description and definition of the "Unit" set forth in the Declaration (which generally only includes the interior airspace between the perimeter walls and excludes interior structural components, shear walls and shafts). For the calculation of the unit area following the definition of the unit set forth in the Declaration, see Exhibit "3-1" of the Declaration. Additionally, measurements of rooms set forth on any floor plan are generally taken at the greatest points of each given room (as if the room were a perfect rectangle), without regard for any cutouts. Accordingly, the area of the actual room will typically be smaller than the product obtained by multiplying the stated length times width. All dimensions are approximate, and all floor plans and development plans are subject to change.



LiveCaretta.com



jdl.

B103

2 bed+study
3 bath

Indoor: 2,950 SF
Outdoor: 2,130 SF
Total: 5,080 SF

290 SF Covered Terrace
1,840 SF Uncovered Terrace/Lawn

C A R E T T A

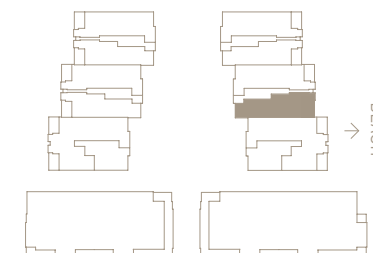


↑
5' Opaque Fence

Stated dimensions are measured following BOMA standards to the exterior boundaries of the exterior walls and the centerline of interior demising walls (without deductions for interior columns, shear walls or shafts) and in fact vary from the dimensions that would be determined by using the description and definition of the "Unit" set forth in the Declaration (which generally only includes the interior airspace between the perimeter walls and excludes interior structural components, shear walls and shafts). For the calculation of the unit area following the definition of the unit set forth in the Declaration, see Exhibit "3-1" of the Declaration. Additionally, measurements of rooms set forth on any floor plan are generally taken at the greatest points of each given room (as if the room were a perfect rectangle), without regard for any cutouts. Accordingly, the area of the actual room will typically be smaller than the product obtained by multiplying the stated length times width. All dimensions are approximate, and all floor plans and development plans are subject to change.



LiveCaretta.com



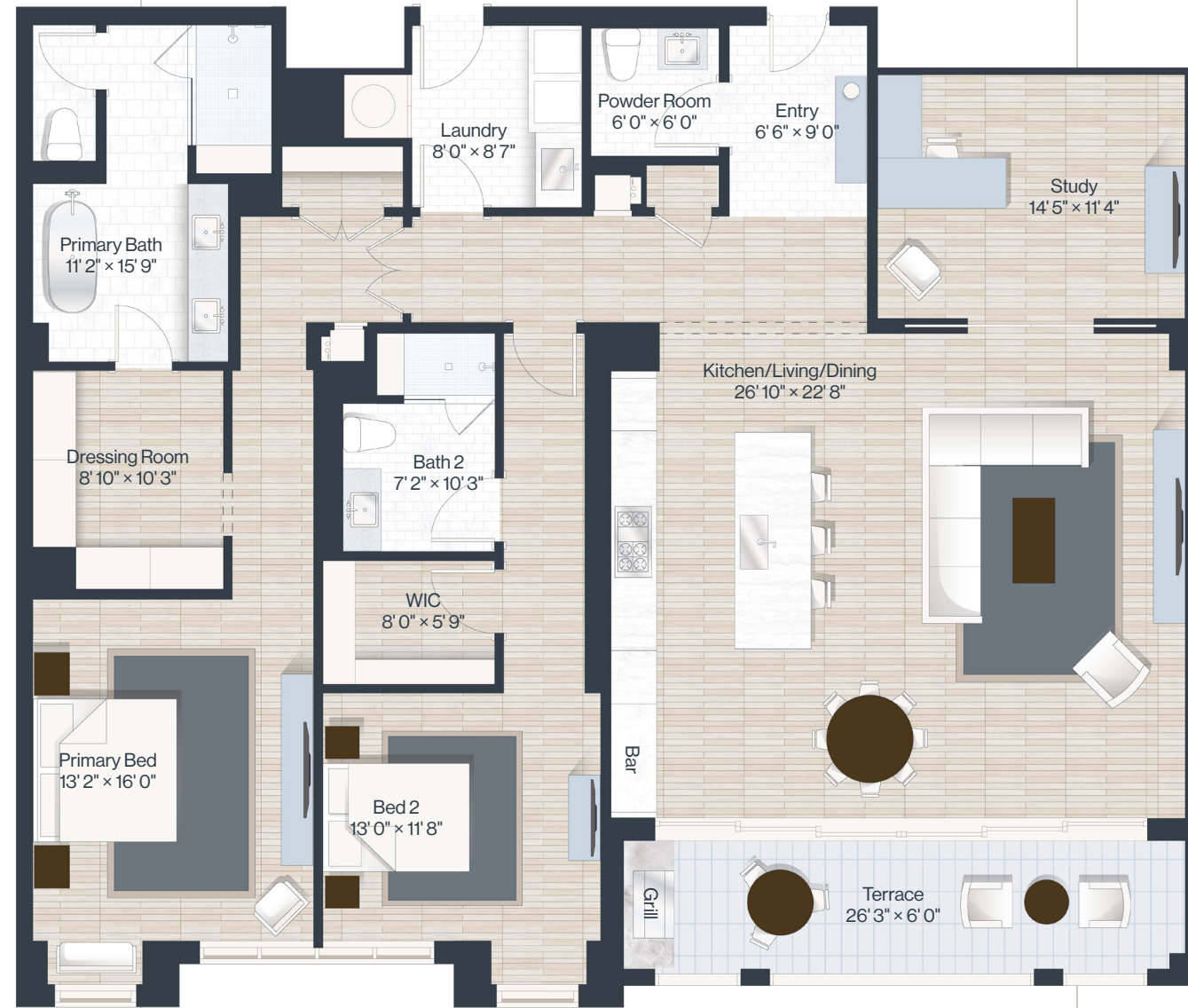
jdl.

D203

2 bed+study
2.1 bath

Indoor: 2,220 SF
Outdoor: 155 SF
Total: 2,375 SF
155 SF Covered Terrace

C A R E T T A



Stated dimensions are measured following BOMA standards to the exterior boundaries of the exterior walls and the centerline of interior demising walls (without deductions for interior columns, shear walls or shafts) and in fact vary from the dimensions that would be determined by using the description and definition of the "Unit" set forth in the Declaration (which generally only includes the interior airspace between the perimeter walls and excludes interior structural components, shear walls and shafts). For the calculation of the unit area following the definition of the unit set forth in the Declaration, see Exhibit "3-1" of the Declaration. Additionally, measurements of rooms set forth on any floor plan are generally taken at the greatest points of each given room (as if the room were a perfect rectangle), without regard for any cutouts. Accordingly, the area of the actual room will typically be smaller than the product obtained by multiplying the stated length times width. All dimensions are approximate, and all floor plans and development plans are subject to change.



LiveCaretta.com



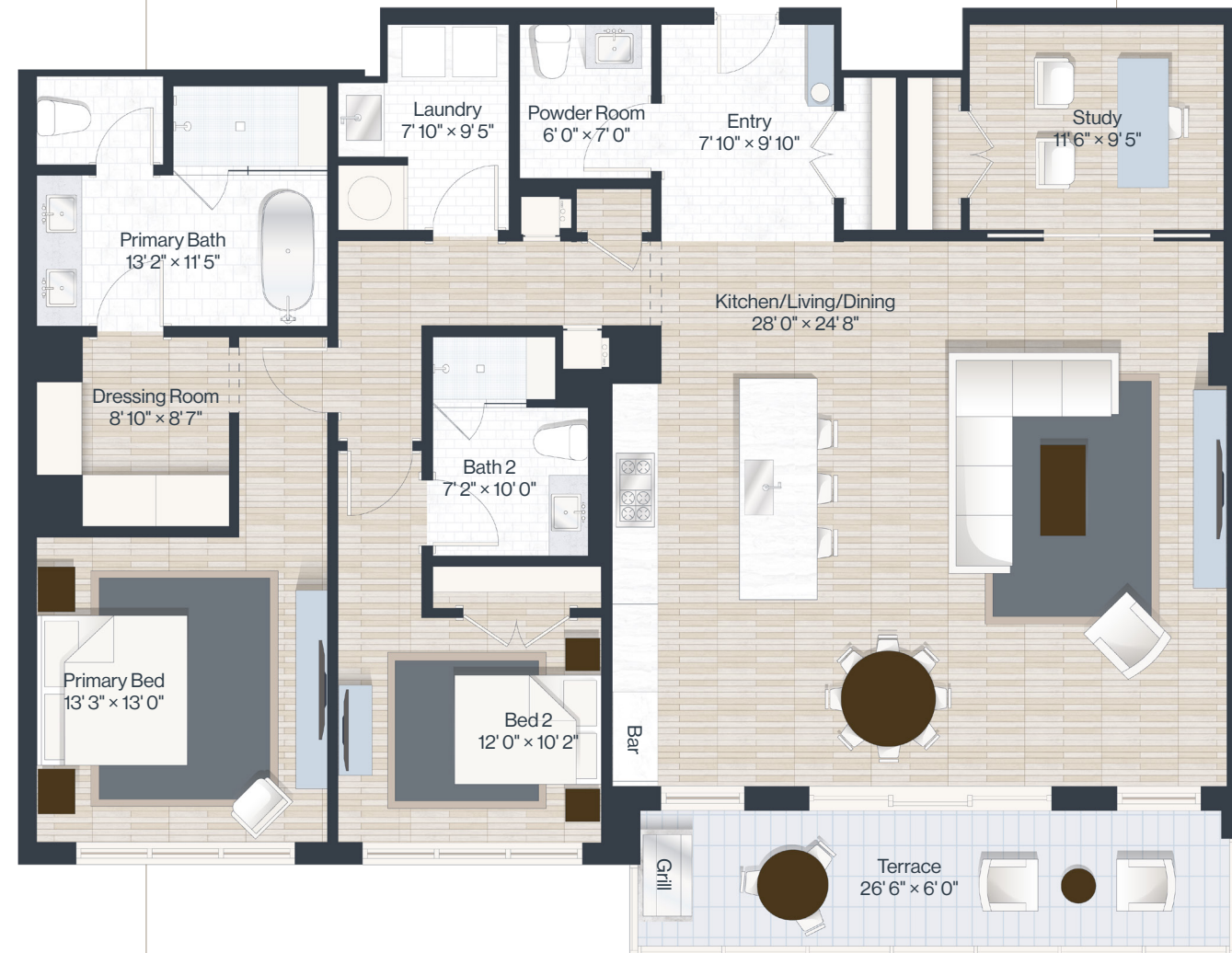
jdl.

D404

2 bed
2.1 bath

Indoor: 1,960 SF
Outdoor: 155 SF
Total: 2,115 SF
155 SF Uncovered Terrace

C A R E T T A



Stated dimensions are measured following BOMA standards to the exterior boundaries of the exterior walls and the centerline of interior demising walls (without deductions for interior columns, shear walls or shafts) and in fact vary from the dimensions that would be determined by using the description and definition of the "Unit" set forth in the Declaration (which generally only includes the interior airspace between the perimeter walls and excludes interior structural components, shear walls and shafts). For the calculation of the unit area following the definition of the unit set forth in the Declaration, see Exhibit "3-1" of the Declaration. Additionally, measurements of rooms set forth on any floor plan are generally taken at the greatest points of each given room (as if the room were a perfect rectangle), without regard for any cutouts. Accordingly, the area of the actual room will typically be smaller than the product obtained by multiplying the stated length times width. All dimensions are approximate, and all floor plans and development plans are subject to change.



LiveCaretta.com



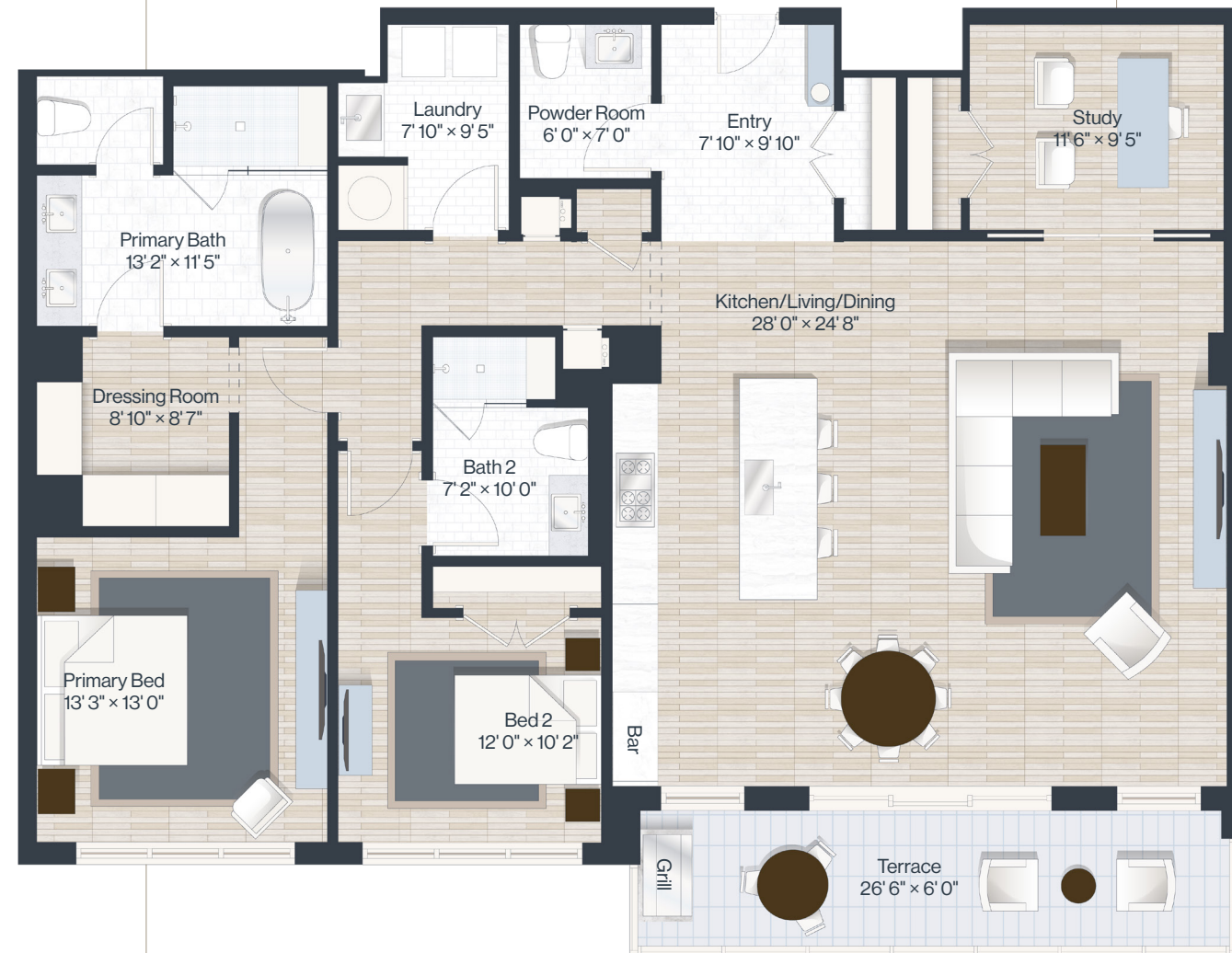
jdl.

D404

2 bed
2.1 bath

Indoor: 1,960 SF
Outdoor: 155 SF
Total: 2,115 SF
155 SF Uncovered Terrace

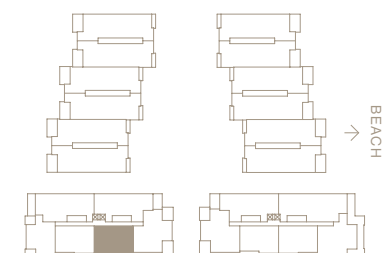
C A R E T T A



Stated dimensions are measured following BOMA standards to the exterior boundaries of the exterior walls and the centerline of interior demising walls (without deductions for interior columns, shear walls or shafts) and in fact vary from the dimensions that would be determined by using the description and definition of the "Unit" set forth in the Declaration (which generally only includes the interior airspace between the perimeter walls and excludes interior structural components, shear walls and shafts). For the calculation of the unit area following the definition of the unit set forth in the Declaration, see Exhibit "3-1" of the Declaration. Additionally, measurements of rooms set forth on any floor plan are generally taken at the greatest points of each given room (as if the room were a perfect rectangle), without regard for any cutouts. Accordingly, the area of the actual room will typically be smaller than the product obtained by multiplying the stated length times width. All dimensions are approximate, and all floor plans and development plans are subject to change.



LiveCaretta.com



jdl.

D403

2 bed+study
2.1 bath

Indoor: 1,995 SF
Outdoor: 160 SF
Total: 2,155 SF
160 SF Uncovered Terrace

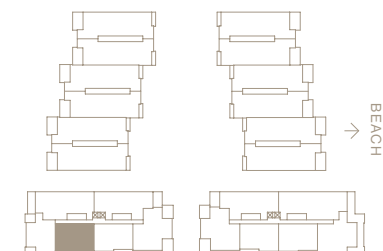
C A R E T T A



Stated dimensions are measured following BOMA standards to the exterior boundaries of the exterior walls and the centerline of interior demising walls (without deductions for interior columns, shear walls or shafts) and in fact vary from the dimensions that would be determined by using the description and definition of the "Unit" set forth in the Declaration (which generally only includes the interior airspace between the perimeter walls and excludes interior structural components, shear walls and shafts). For the calculation of the unit area following the definition of the unit set forth in the Declaration, see Exhibit "3-1" of the Declaration. Additionally, measurements of rooms set forth on any floor plan are generally taken at the greatest points of each given room (as if the room were a perfect rectangle), without regard for any cutouts. Accordingly, the area of the actual room will typically be smaller than the product obtained by multiplying the stated length times width. All dimensions are approximate, and all floor plans and development plans are subject to change.



LiveCaretta.com



jdl.

A306

3 bed+study
4 bath

Indoor: 3,450 SF
Outdoor: 500 SF
Total: 3,950 SF

300 SF Covered Terrace
200 SF Uncovered Terrace

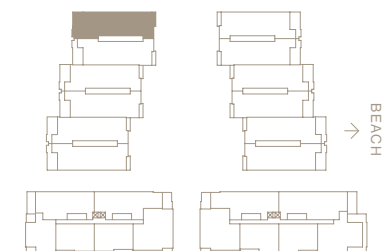
C A R E T T A



Stated dimensions are measured following BOMA standards to the exterior boundaries of the exterior walls and the centerline of interior demising walls (without deductions for interior columns, shear walls or shafts) and in fact vary from the dimensions that would be determined by using the description and definition of the "Unit" set forth in the Declaration (which generally only includes the interior airspace between the perimeter walls and excludes interior structural components, shear walls and shafts). For the calculation of the unit area following the definition of the unit set forth in the Declaration, see Exhibit "3-1" of the Declaration. Additionally, measurements of rooms set forth on any floor plan are generally taken at the greatest points of each given room (as if the room were a perfect rectangle), without regard for any cutouts. Accordingly, the area of the actual room will typically be smaller than the product obtained by multiplying the stated length times width. All dimensions are approximate, and all floor plans and development plans are subject to change.



LiveCaretta.com



jdl.

A303

3 bed+study
4 bath

Indoor: 3,400 SF
Outdoor: 500 SF
Total: 3,900 SF

300 SF Covered Terrace
200 SF Uncovered Terrace

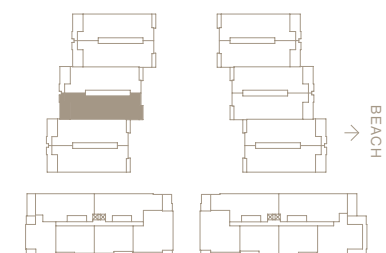
C A R E T T A



Stated dimensions are measured following BOMA standards to the exterior boundaries of the exterior walls and the centerline of interior demising walls (without deductions for interior columns, shear walls or shafts) and in fact vary from the dimensions that would be determined by using the description and definition of the "Unit" set forth in the Declaration (which generally only includes the interior airspace between the perimeter walls and excludes interior structural components, shear walls and shafts). For the calculation of the unit area following the definition of the unit set forth in the Declaration, see Exhibit "3-1" of the Declaration. Additionally, measurements of rooms set forth on any floor plan are generally taken at the greatest points of each given room (as if the room were a perfect rectangle), without regard for any cutouts. Accordingly, the area of the actual room will typically be smaller than the product obtained by multiplying the stated length times width. All dimensions are approximate, and all floor plans and development plans are subject to change.



LiveCaretta.com



jdl.

A304

3 bed+study
4 bath

Indoor: 3,400 SF
Outdoor: 500 SF
Total: 3,900 SF

300 SF Covered Terrace
200 SF Uncovered Terrace

C A R E T T A



Stated dimensions are measured following BOMA standards to the exterior boundaries of the exterior walls and the centerline of interior demising walls (without deductions for interior columns, shear walls or shafts) and in fact vary from the dimensions that would be determined by using the description and definition of the "Unit" set forth in the Declaration (which generally only includes the interior airspace between the perimeter walls and excludes interior structural components, shear walls and shafts). For the calculation of the unit area following the definition of the unit set forth in the Declaration, see Exhibit "3-1" of the Declaration. Additionally, measurements of rooms set forth on any floor plan are generally taken at the greatest points of each given room (as if the room were a perfect rectangle), without regard for any cutouts. Accordingly, the area of the actual room will typically be smaller than the product obtained by multiplying the stated length times width. All dimensions are approximate, and all floor plans and development plans are subject to change.



LiveCaretta.com



jdl.

A301

3 bed+study
4 bath

Indoor: 3,450 SF
Outdoor: 500 SF
Total: 3,950 SF

300 SF Covered Terrace
200 SF Uncovered Terrace

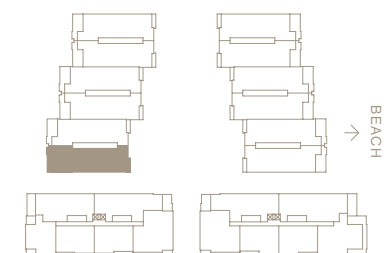
C A R E T T A



Stated dimensions are measured following BOMA standards to the exterior boundaries of the exterior walls and the centerline of interior demising walls (without deductions for interior columns, shear walls or shafts) and in fact vary from the dimensions that would be determined by using the description and definition of the "Unit" set forth in the Declaration (which generally only includes the interior airspace between the perimeter walls and excludes interior structural components, shear walls and shafts). For the calculation of the unit area following the definition of the unit set forth in the Declaration, see Exhibit "3-1" of the Declaration. Additionally, measurements of rooms set forth on any floor plan are generally taken at the greatest points of each given room (as if the room were a perfect rectangle), without regard for any cutouts. Accordingly, the area of the actual room will typically be smaller than the product obtained by multiplying the stated length times width. All dimensions are approximate, and all floor plans and development plans are subject to change.

1/8" = 1'
0 8'

LiveCaretta.com



jdl.

A302

3 bed+study
4 bath

Indoor: 3,400 SF
Outdoor: 500 SF
Total: 3,900 SF

300 SF Covered Terrace
200 SF Uncovered Terrace

C A R E T T A



Stated dimensions are measured following BOMA standards to the exterior boundaries of the exterior walls and the centerline of interior demising walls (without deductions for interior columns, shear walls or shafts) and in fact vary from the dimensions that would be determined by using the description and definition of the "Unit" set forth in the Declaration (which generally only includes the interior airspace between the perimeter walls and excludes interior structural components, shear walls and shafts). For the calculation of the unit area following the definition of the unit set forth in the Declaration, see Exhibit "3-1" of the Declaration. Additionally, measurements of rooms set forth on any floor plan are generally taken at the greatest points of each given room (as if the room were a perfect rectangle), without regard for any cutouts. Accordingly, the area of the actual room will typically be smaller than the product obtained by multiplying the stated length times width. All dimensions are approximate, and all floor plans and development plans are subject to change.



LiveCaretta.com



jdl.

A206

3 bed+study
4 bath

Indoor: 3,540 SF
Outdoor: 425 SF
Total: 3,965 SF
425 SF Covered Terrace

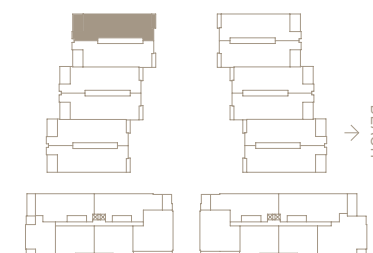
C A R E T T A



Stated dimensions are measured following BOMA standards to the exterior boundaries of the exterior walls and the centerline of interior demising walls (without deductions for interior columns, shear walls or shafts) and in fact vary from the dimensions that would be determined by using the description and definition of the "Unit" set forth in the Declaration (which generally only includes the interior airspace between the perimeter walls and excludes interior structural components, shear walls and shafts). For the calculation of the unit area following the definition of the unit set forth in the Declaration, see Exhibit "3-1" of the Declaration. Additionally, measurements of rooms set forth on any floor plan are generally taken at the greatest points of each given room (as if the room were a perfect rectangle), without regard for any cutouts. Accordingly, the area of the actual room will typically be smaller than the product obtained by multiplying the stated length times width. All dimensions are approximate, and all floor plans and development plans are subject to change.



LiveCaretta.com



jdl.

A205

3 bed+study
4 bath

Indoor: 3,490 SF
Outdoor: 415 SF
Total: 3,905 SF
415 SF Covered Terrace

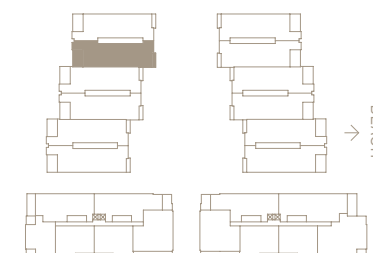
C A R E T T A



Stated dimensions are measured following BOMA standards to the exterior boundaries of the exterior walls and the centerline of interior demising walls (without deductions for interior columns, shear walls or shafts) and in fact vary from the dimensions that would be determined by using the description and definition of the "Unit" set forth in the Declaration (which generally only includes the interior airspace between the perimeter walls and excludes interior structural components, shear walls and shafts). For the calculation of the unit area following the definition of the unit set forth in the Declaration, see Exhibit "3-1" of the Declaration. Additionally, measurements of rooms set forth on any floor plan are generally taken at the greatest points of each given room (as if the room were a perfect rectangle), without regard for any cutouts. Accordingly, the area of the actual room will typically be smaller than the product obtained by multiplying the stated length times width. All dimensions are approximate, and all floor plans and development plans are subject to change.



LiveCaretta.com



jdl.

A204

3 bed+study
4 bath

Indoor: 3,490 SF
Outdoor: 415 SF
Total: 3,905 SF
415 SF Covered Terrace

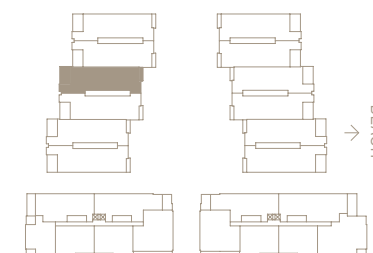
C A R E T T A



Stated dimensions are measured following BOMA standards to the exterior boundaries of the exterior walls and the centerline of interior demising walls (without deductions for interior columns, shear walls or shafts) and in fact vary from the dimensions that would be determined by using the description and definition of the "Unit" set forth in the Declaration (which generally only includes the interior airspace between the perimeter walls and excludes interior structural components, shear walls and shafts). For the calculation of the unit area following the definition of the unit set forth in the Declaration, see Exhibit "3-1" of the Declaration. Additionally, measurements of rooms set forth on any floor plan are generally taken at the greatest points of each given room (as if the room were a perfect rectangle), without regard for any cutouts. Accordingly, the area of the actual room will typically be smaller than the product obtained by multiplying the stated length times width. All dimensions are approximate, and all floor plans and development plans are subject to change.



LiveCaretta.com



jdl.

A203

3 bed+study
4 bath

Indoor: 3,490 SF
Outdoor: 415 SF
Total: 3,905 SF
415 SF Covered Terrace

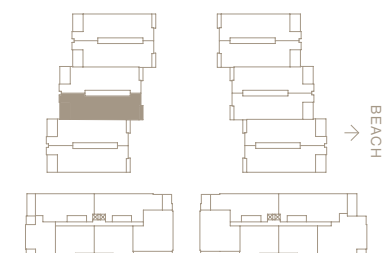
C A R E T T A



Stated dimensions are measured following BOMA standards to the exterior boundaries of the exterior walls and the centerline of interior demising walls (without deductions for interior columns, shear walls or shafts) and in fact vary from the dimensions that would be determined by using the description and definition of the "Unit" set forth in the Declaration (which generally only includes the interior airspace between the perimeter walls and excludes interior structural components, shear walls and shafts). For the calculation of the unit area following the definition of the unit set forth in the Declaration, see Exhibit "3-1" of the Declaration. Additionally, measurements of rooms set forth on any floor plan are generally taken at the greatest points of each given room (as if the room were a perfect rectangle), without regard for any cutouts. Accordingly, the area of the actual room will typically be smaller than the product obtained by multiplying the stated length times width. All dimensions are approximate, and all floor plans and development plans are subject to change.



LiveCaretta.com



jdl.

A202

3 bed+study
4 bath

Indoor: 3,490 SF
Outdoor: 415 SF
Total: 3,905 SF
415 SF Covered Terrace

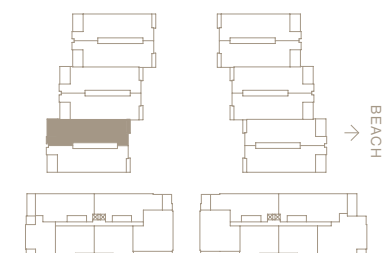
C A R E T T A



Stated dimensions are measured following BOMA standards to the exterior boundaries of the exterior walls and the centerline of interior demising walls (without deductions for interior columns, shear walls or shafts) and in fact vary from the dimensions that would be determined by using the description and definition of the "Unit" set forth in the Declaration (which generally only includes the interior airspace between the perimeter walls and excludes interior structural components, shear walls and shafts). For the calculation of the unit area following the definition of the unit set forth in the Declaration, see Exhibit "3-1" of the Declaration. Additionally, measurements of rooms set forth on any floor plan are generally taken at the greatest points of each given room (as if the room were a perfect rectangle), without regard for any cutouts. Accordingly, the area of the actual room will typically be smaller than the product obtained by multiplying the stated length times width. All dimensions are approximate, and all floor plans and development plans are subject to change.



LiveCaretta.com



jdl.

A201

3 bed+study
4 bath

Indoor: 3,540 SF
Outdoor: 425 SF
Total: 3,965 SF
425 SF Covered Terrace

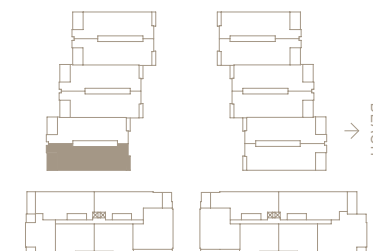
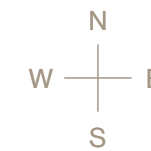
C A R E T T A



Stated dimensions are measured following BOMA standards to the exterior boundaries of the exterior walls and the centerline of interior demising walls (without deductions for interior columns, shear walls or shafts) and in fact vary from the dimensions that would be determined by using the description and definition of the "Unit" set forth in the Declaration (which generally only includes the interior airspace between the perimeter walls and excludes interior structural components, shear walls and shafts). For the calculation of the unit area following the definition of the unit set forth in the Declaration, see Exhibit "3-1" of the Declaration. Additionally, measurements of rooms set forth on any floor plan are generally taken at the greatest points of each given room (as if the room were a perfect rectangle), without regard for any cutouts. Accordingly, the area of the actual room will typically be smaller than the product obtained by multiplying the stated length times width. All dimensions are approximate, and all floor plans and development plans are subject to change.



LiveCaretta.com



A106

3 bed+study
4 bath

Indoor: 3,580 SF
Outdoor: 1,990 SF
Total: 5,570 SF

290 SF Covered Terrace
1,700 SF Uncovered Terrace/Lawn

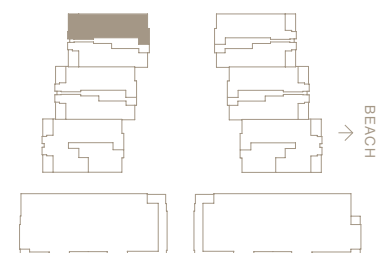
C A R E T T A



Stated dimensions are measured following BOMA standards to the exterior boundaries of the exterior walls and the centerline of interior demising walls (without deductions for interior columns, shear walls or shafts) and in fact vary from the dimensions that would be determined by using the description and definition of the "Unit" set forth in the Declaration (which generally only includes the interior airspace between the perimeter walls and excludes interior structural components, shear walls and shafts). For the calculation of the unit area following the definition of the unit set forth in the Declaration, see Exhibit "3-1" of the Declaration. Additionally, measurements of rooms set forth on any floor plan are generally taken at the greatest points of each given room (as if the room were a perfect rectangle), without regard for any cutouts. Accordingly, the area of the actual room will typically be smaller than the product obtained by multiplying the stated length times width. All dimensions are approximate, and all floor plans and development plans are subject to change.



LiveCaretta.com



jdl.

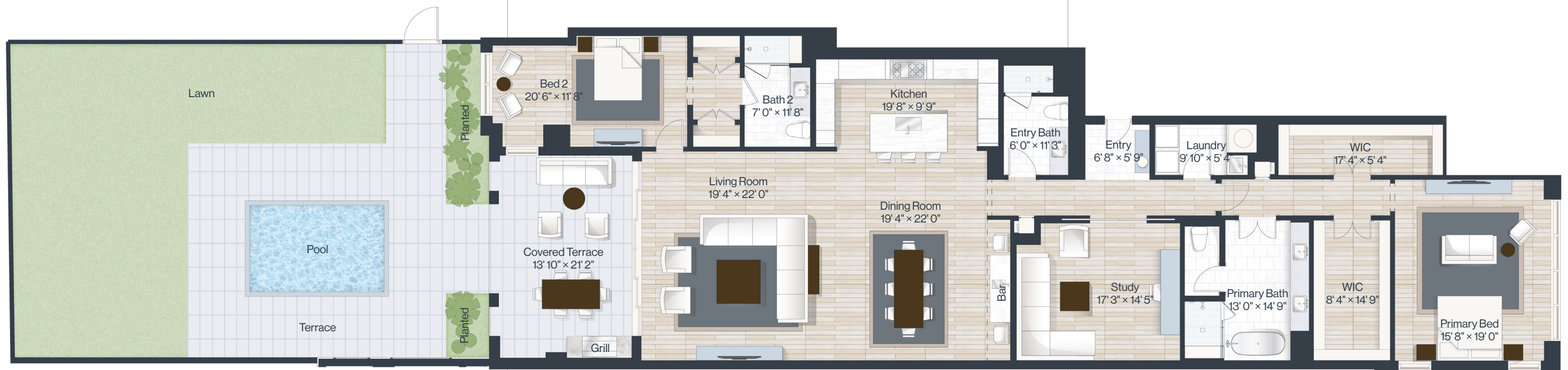
A105

2 bed+study
3 bath

Indoor: 2,935 SF
Outdoor: 1,920 SF
Total: 4,855 SF

290 SF Covered Terrace
1,630 SF Uncovered Terrace/Lawn

C A R E T T A



↑
5' Opaque Fence

Stated dimensions are measured following BOMA standards to the exterior boundaries of the exterior walls and the centerline of interior demising walls (without deductions for interior columns, shear walls or shafts) and in fact vary from the dimensions that would be determined by using the description and definition of the "Unit" set forth in the Declaration (which generally only includes the interior airspace between the perimeter walls and excludes interior structural components, shear walls and shafts). For the calculation of the unit area following the definition of the unit set forth in the Declaration, see Exhibit "3-1" of the Declaration. Additionally, measurements of rooms set forth on any floor plan are generally taken at the greatest points of each given room (as if the room were a perfect rectangle), without regard for any cutouts. Accordingly, the area of the actual room will typically be smaller than the product obtained by multiplying the stated length times width. All dimensions are approximate, and all floor plans and development plans are subject to change.



LiveCaretta.com



jdl.

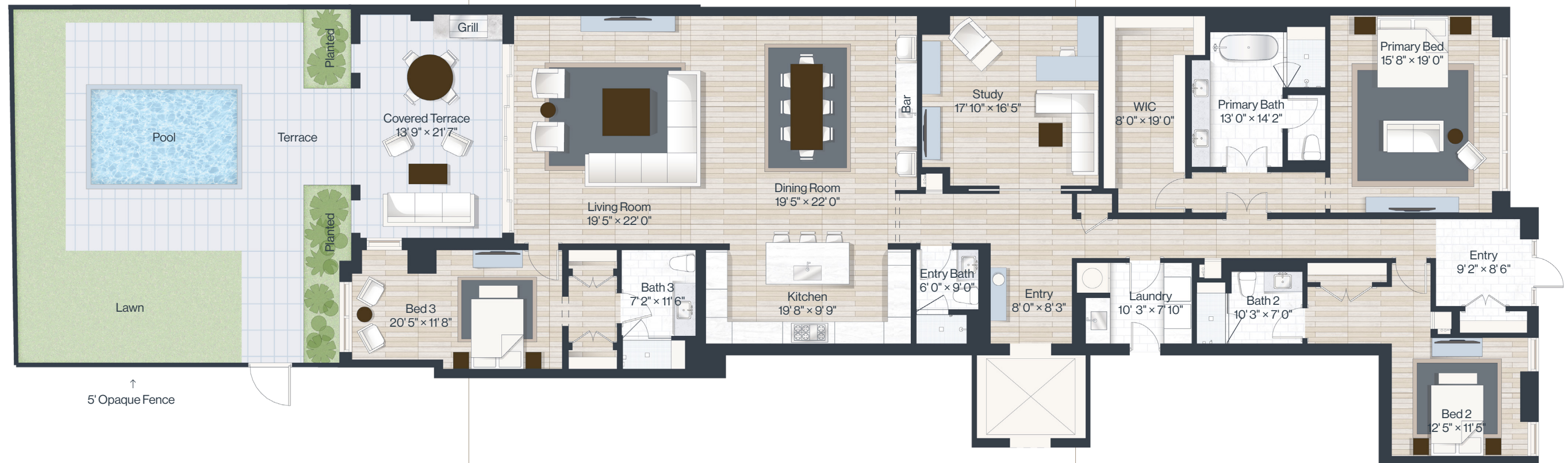
A104

3 bed+study
4 bath

Indoor: 3,530 SF
Outdoor: 1,370 SF
Total: 4,900 SF

290 SF Covered Terrace
1,080 SF Uncovered Terrace/Lawn

C A R E T T A



Stated dimensions are measured following BOMA standards to the exterior boundaries of the exterior walls and the centerline of interior demising walls (without deductions for interior columns, shear walls or shafts) and in fact vary from the dimensions that would be determined by using the description and definition of the "Unit" set forth in the Declaration (which generally only includes the interior airspace between the perimeter walls and excludes interior structural components, shear walls and shafts). For the calculation of the unit area following the definition of the unit set forth in the Declaration, see Exhibit "3-1" of the Declaration. Additionally, measurements of rooms set forth on any floor plan are generally taken at the greatest points of each given room (as if the room were a perfect rectangle), without regard for any cutouts. Accordingly, the area of the actual room will typically be smaller than the product obtained by multiplying the stated length times width. All dimensions are approximate, and all floor plans and development plans are subject to change.



LiveCaretta.com



jdl.

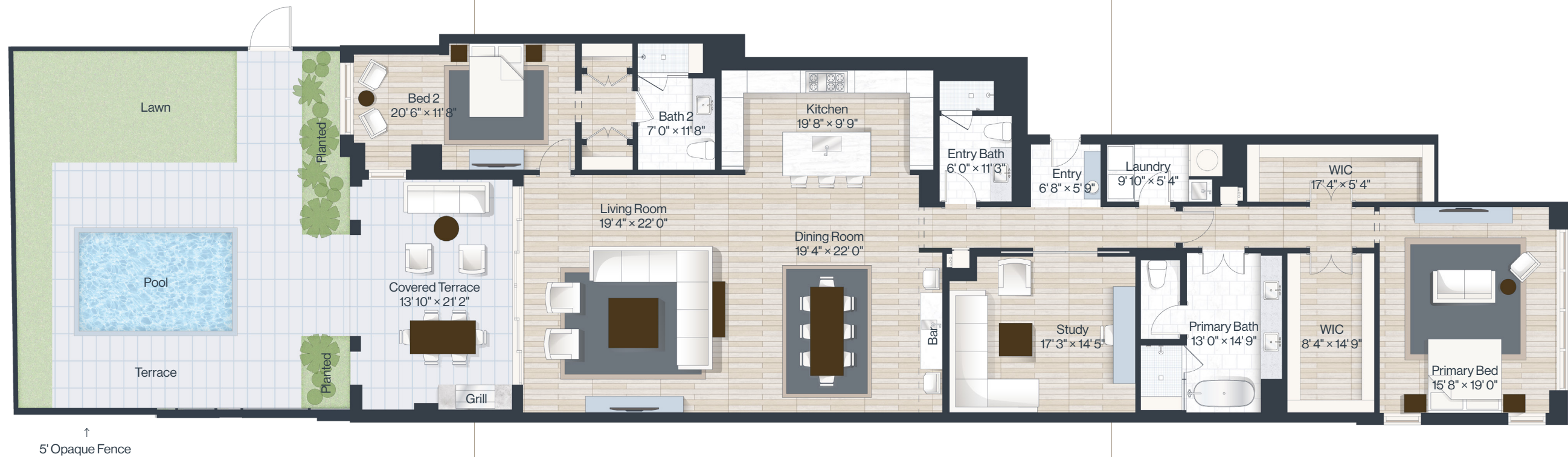
A103

2 bed+study
3 bath

Indoor: 2,950 SF
Outdoor: 1,290 SF
Total: 4,240 SF

290 SF Covered Terrace
1,000 SF Uncovered Terrace/Lawn

C A R E T T A



Stated dimensions are measured following BOMA standards to the exterior boundaries of the exterior walls and the centerline of interior demising walls (without deductions for interior columns, shear walls or shafts) and in fact vary from the dimensions that would be determined by using the description and definition of the "Unit" set forth in the Declaration (which generally only includes the interior airspace between the perimeter walls and excludes interior structural components, shear walls and shafts). For the calculation of the unit area following the definition of the unit set forth in the Declaration, see Exhibit "3-1" of the Declaration. Additionally, measurements of rooms set forth on any floor plan are generally taken at the greatest points of each given room (as if the room were a perfect rectangle), without regard for any cutouts. Accordingly, the area of the actual room will typically be smaller than the product obtained by multiplying the stated length times width. All dimensions are approximate, and all floor plans and development plans are subject to change.



LiveCaretta.com



jdl.

A102

4 bed+study
6.1 bath

Indoor: 5,340 SF
Outdoor: 1,540 SF
Total: 6,880 SF

660 SF Covered Terrace
880 SF Uncovered Terrace/Lawn

C A R E T T A

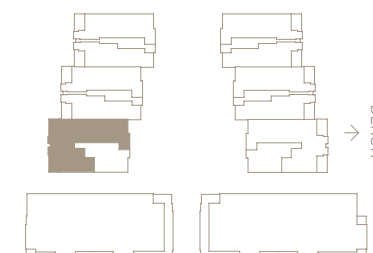
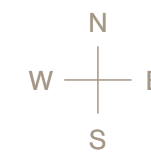


5' Opaque Fence

Stated dimensions are measured following BOMA standards to the exterior boundaries of the exterior walls and the centerline of interior demising walls (without deductions for interior columns, shear walls or shafts) and in fact vary from the dimensions that would be determined by using the description and definition of the "Unit" set forth in the Declaration (which generally only includes the interior airspace between the perimeter walls and excludes interior structural components, shear walls and shafts). For the calculation of the unit area, following the definition of the unit set forth in the Declaration, see Exhibit "3-1" of the Declaration. Additionally, measurements of rooms set forth on any floor plan are generally taken at the greatest points of each given room (as if the room were a perfect rectangle), without regard for any cutouts. Accordingly, the area of the actual room will typically be smaller than the product obtained by multiplying the stated length times width. All dimensions are approximate, and all floor plans and development plans are subject to change.



LiveCaretta.com



jdl.