

Upper Penthouse 01

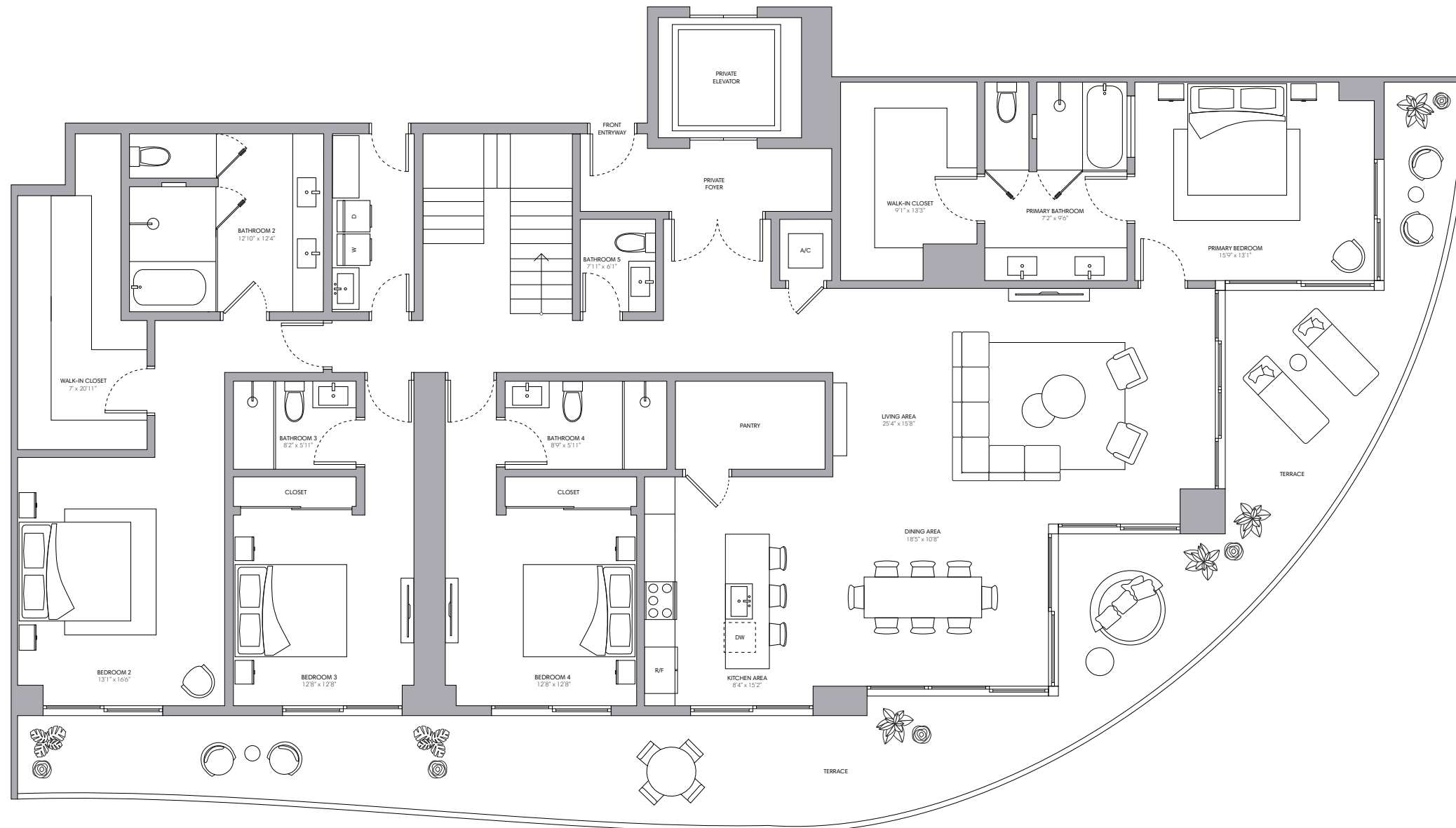
LEVEL 01

5 BEDROOMS

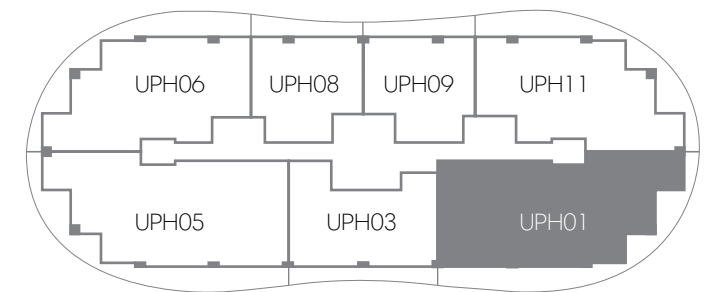
6.5 BATHROOMS

LIBRARY + PRIVATE PLUNGE POOL

INTERIOR LEVEL 01	3,195 SQ FT 297 M
EXTERIOR LEVEL 01	923 SQ FT 86 M
TOTAL LEVEL 01	4,118 SQ FT 383 M
INTERIOR LEVEL 02	1,880 SQ FT 175 M
EXTERIOR LEVEL 02	2,165 SQ FT 85 M
TOTAL LEVEL 02	4,045 SQ FT 376 M
TOTAL	8,163 SQ FT 759 M



LAGOON



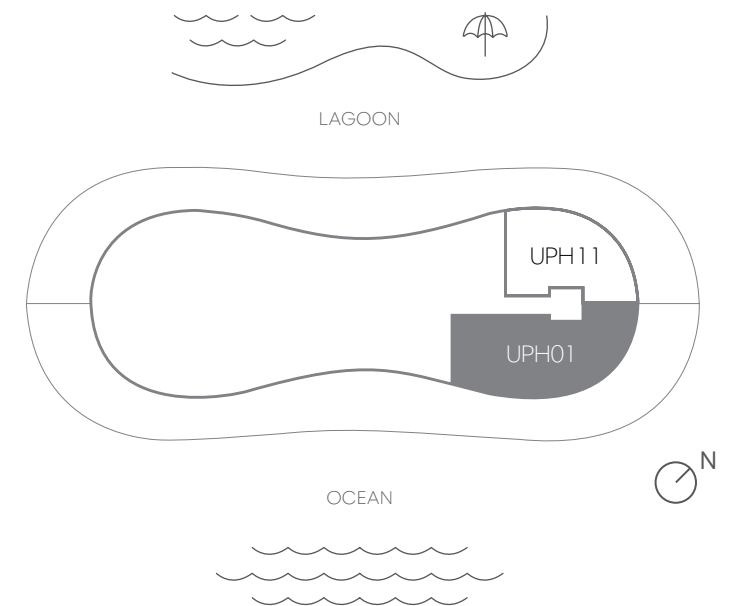
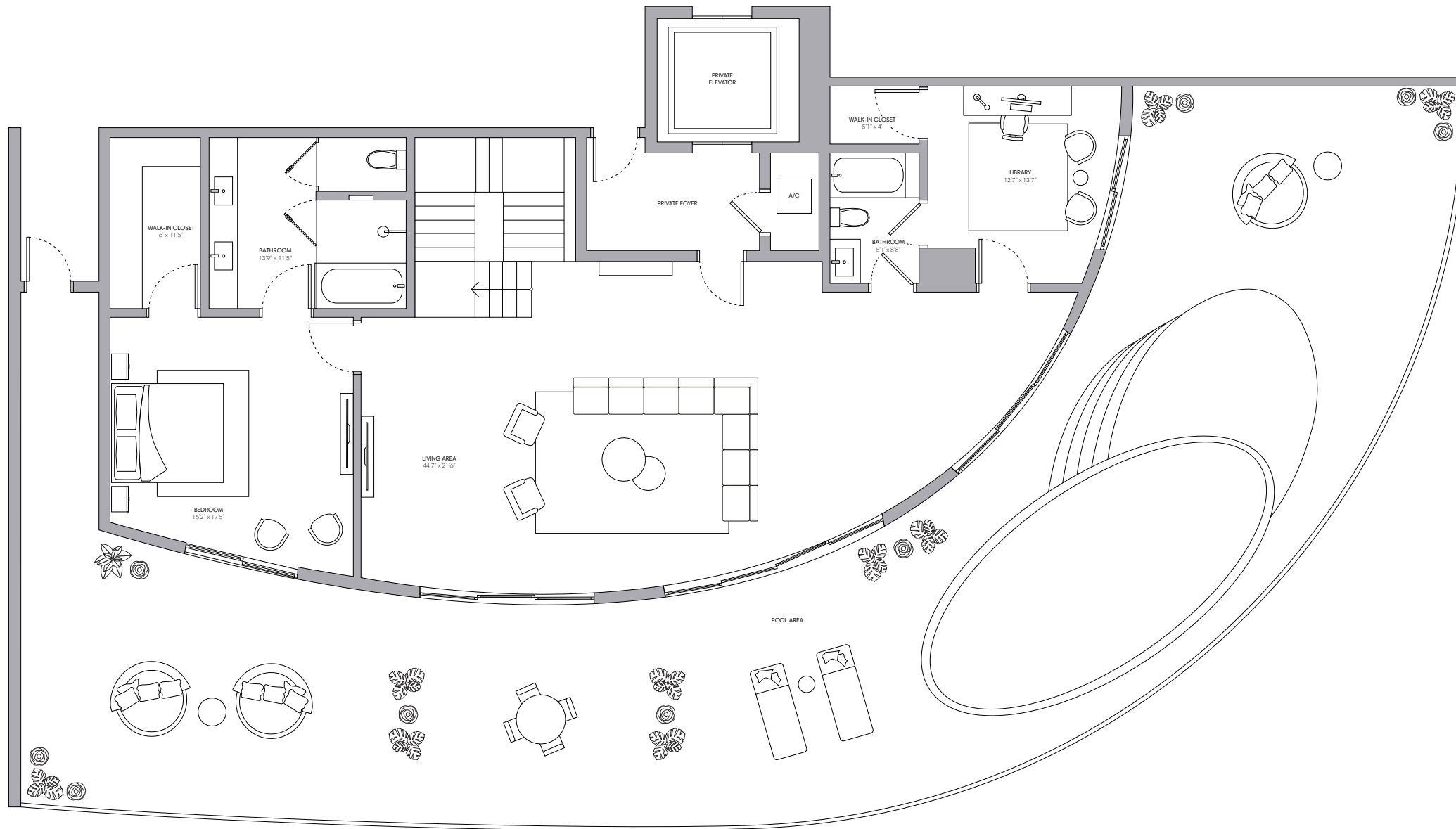
OCEAN



Sales by Fortune Development Sales

STATED DIMENSIONS AND SQUARE FOOTAGES ARE MEASURED TO THE EXTERIOR BOUNDARIES OF THE EXTERIOR WALLS AND THE CENTERLINE OF INTERIOR DEMISING WALLS AND IN FACT VARIES FROM THE SQUARE FOOTAGE AND DIMENSIONS THAT WOULD BE DETERMINED BY USING THE DESCRIPTION AND DEFINITION OF THE "UNIT" SET FORTH IN THE DECLARATION (WHICH GENERALLY ONLY INCLUDES THE INTERIOR AIRSPACE BETWEEN THE PERIMETER WALLS AND EXCLUDES ALL INTERIOR STRUCTURAL COMPONENTS AND OTHER COMMON ELEMENTS). THIS METHOD IS GENERALLY USED IN SALES MATERIALS AND IS PROVIDED TO ALLOW A PROSPECTIVE BUYER TO COMPARE THE UNITS WITH UNITS IN OTHER CONDOMINIUM PROJECTS THAT UTILIZE THE SAME METHOD. FOR THE SQUARE FOOTAGE OF THE UNIT, CALCULATED IN ACCORDANCE WITH THE DEFINITION SET FORTH IN THE DECLARATION, WHICH WILL BE SMALLER THAN STATED ABOVE, SEE THE DECLARATION. ALL DIMENSIONS ARE ESTIMATES WHICH WILL VARY WITH ACTUAL CONSTRUCTION, AND ALL FLOOR PLANS, SPECIFICATIONS AND OTHER DEVELOPMENT PLANS ARE SUBJECT TO CHANGE AND WILL NOT NECESSARILY ACCURATELY REFLECT THE FINAL PLANS AND SPECIFICATIONS FOR THE DEVELOPMENT. ALL DEPICTIONS OF FURNITURE, APPLIANCES, COUNTERS, SOFFITS, FLOOR COVERINGS AND OTHER MATTERS OF DETAIL, INCLUDING, WITHOUT LIMITATION, ITEMS OF FINISH AND DECORATION, ARE CONCEPTUAL ONLY AND ARE NOT NECESSARILY INCLUDED IN EACH UNIT. SAID ITEMS ARE ONLY INCLUDED IF AND TO THE EXTENT PROVIDED IN YOUR PURCHASE AGREEMENT. PLEASE NOTE THAT THE "TOTAL" AREA LISTED HEREON INCLUDES THE PROPOSED SQUARE FOOTAGE OF TERRACE, WHICH IS NOT PART OF THE BOUNDARIES OF THE UNIT AS SET FORTH ON THE DECLARATION. ORAL REPRESENTATIONS CANNOT BE RELIED UPON AS CORRECTLY STATING THE REPRESENTATIONS OF THE DEVELOPER. FOR CORRECT REPRESENTATIONS, MAKE REFERENCE TO THIS BROCHURE AND TO THE DOCUMENTS REQUIRED BY SECTION 718.503, FLORIDA STATUTES, TO BE FURNISHED BY A DEVELOPER TO A BUYER OR LESSEE.

Upper
Penthouse 01
LEVEL 02



Sales by Fortune Development Sales

STATED DIMENSIONS AND SQUARE FOOTAGES ARE MEASURED TO THE EXTERIOR BOUNDARIES OF THE EXTERIOR WALLS AND THE CENTERLINE OF INTERIOR DEMISING WALLS AND IN FACT VARIES FROM THE SQUARE FOOTAGE AND DIMENSIONS THAT WOULD BE DETERMINED BY USING THE DESCRIPTION AND DEFINITION OF THE "UNIT" SET FORTH IN THE DECLARATION (WHICH GENERALLY ONLY INCLUDES THE INTERIOR AIRSPACE BETWEEN THE PERIMETER WALLS AND EXCLUDES ALL INTERIOR STRUCTURAL COMPONENTS AND OTHER COMMON ELEMENTS). THIS METHOD IS GENERALLY USED IN SALES MATERIALS AND IS PROVIDED TO ALLOW A PROSPECTIVE BUYER TO COMPARE THE UNITS WITH UNITS IN OTHER CONDOMINIUM PROJECTS THAT UTILIZE THE SAME METHOD. FOR THE SQUARE FOOTAGE OF THE UNIT, CALCULATED IN ACCORDANCE WITH THE DEFINITION SET FORTH IN THE DECLARATION, WHICH WILL BE SMALLER THAN STATED ABOVE, SEE THE DECLARATION. ALL DIMENSIONS ARE ESTIMATES WHICH WILL VARY WITH ACTUAL CONSTRUCTION, AND ALL FLOOR PLANS, SPECIFICATIONS AND OTHER DEVELOPMENT PLANS ARE SUBJECT TO CHANGE AND WILL NOT NECESSARILY ACCURATELY REFLECT THE FINAL PLANS AND SPECIFICATIONS FOR THE DEVELOPMENT. ALL DEPICTIONS OF FURNITURE, APPLIANCES, COUNTERS, SOFFITS, FLOOR COVERINGS AND OTHER MATTERS OF DETAIL, INCLUDING, WITHOUT LIMITATION, ITEMS OF FINISH AND DECORATION, ARE CONCEPTUAL ONLY AND ARE NOT NECESSARILY INCLUDED IN EACH UNIT. SAID ITEMS ARE ONLY INCLUDED IF AND TO THE EXTENT PROVIDED IN YOUR PURCHASE AGREEMENT. PLEASE NOTE THAT THE "TOTAL" AREA LISTED HEREON INCLUDES THE PROPOSED SQUARE FOOTAGE OF TERRACE, WHICH IS NOT PART OF THE BOUNDARIES OF THE UNIT AS SET FORTH ON THE DECLARATION. ORAL REPRESENTATIONS CANNOT BE RELIED UPON AS CORRECTLY STATING THE REPRESENTATIONS OF THE DEVELOPER. FOR CORRECT REPRESENTATIONS, MAKE REFERENCE TO THIS BROCHURE AND TO THE DOCUMENTS REQUIRED BY SECTION 718.503, FLORIDA STATUTES, TO BE FURNISHED BY A DEVELOPER TO A BUYER OR LESSEE.

Upper Penthouse II

LEVEL 01

4 BEDROOMS

6 BATHROOMS

LIBRARY + PRIVATE PLUNGE POOL

INTERIOR LEVEL 01 2,533 SQ FT | 235 M

EXTERIOR LEVEL 01 835 SQ FT | 78 M

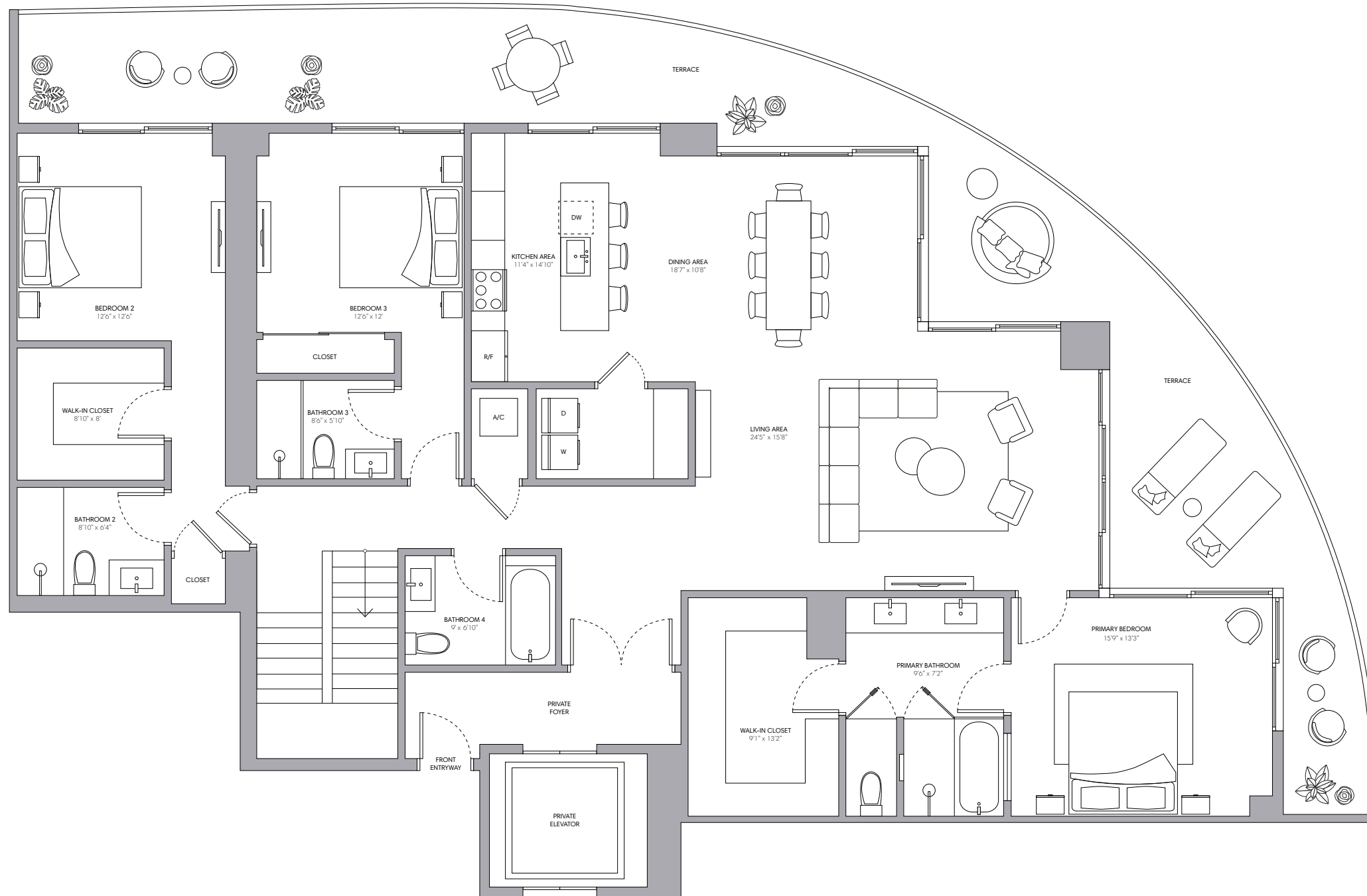
TOTAL LEVEL 01 3,368 SQ FT | 313 M

INTERIOR LEVEL 02 1,313 SQ FT | 122 M

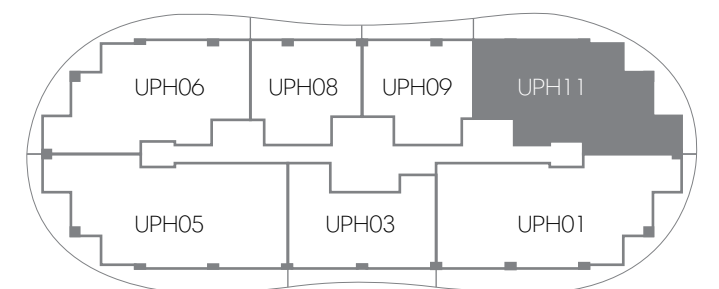
EXTERIOR LEVEL 02 1,751 SQ FT | 163 M

TOTAL LEVEL 02 3,064 SQ FT | 285 M

TOTAL 6,432 SQ FT | 598 M



LAGOON



OCEAN

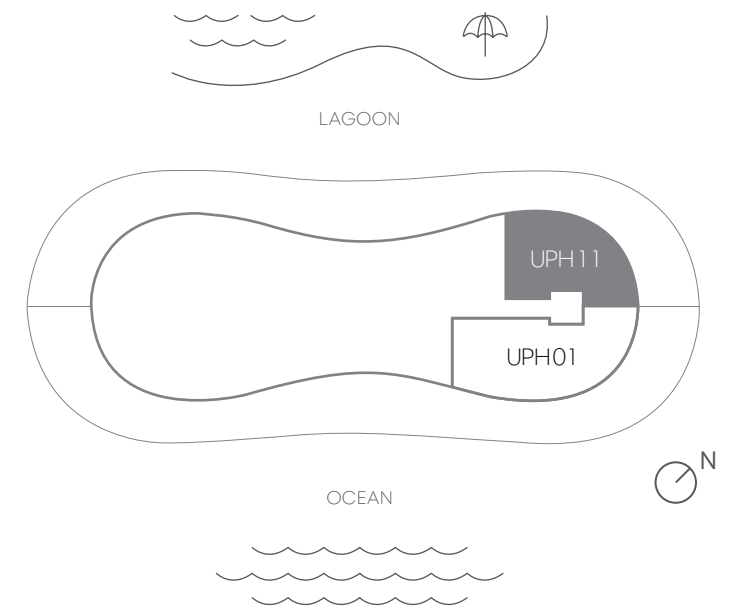
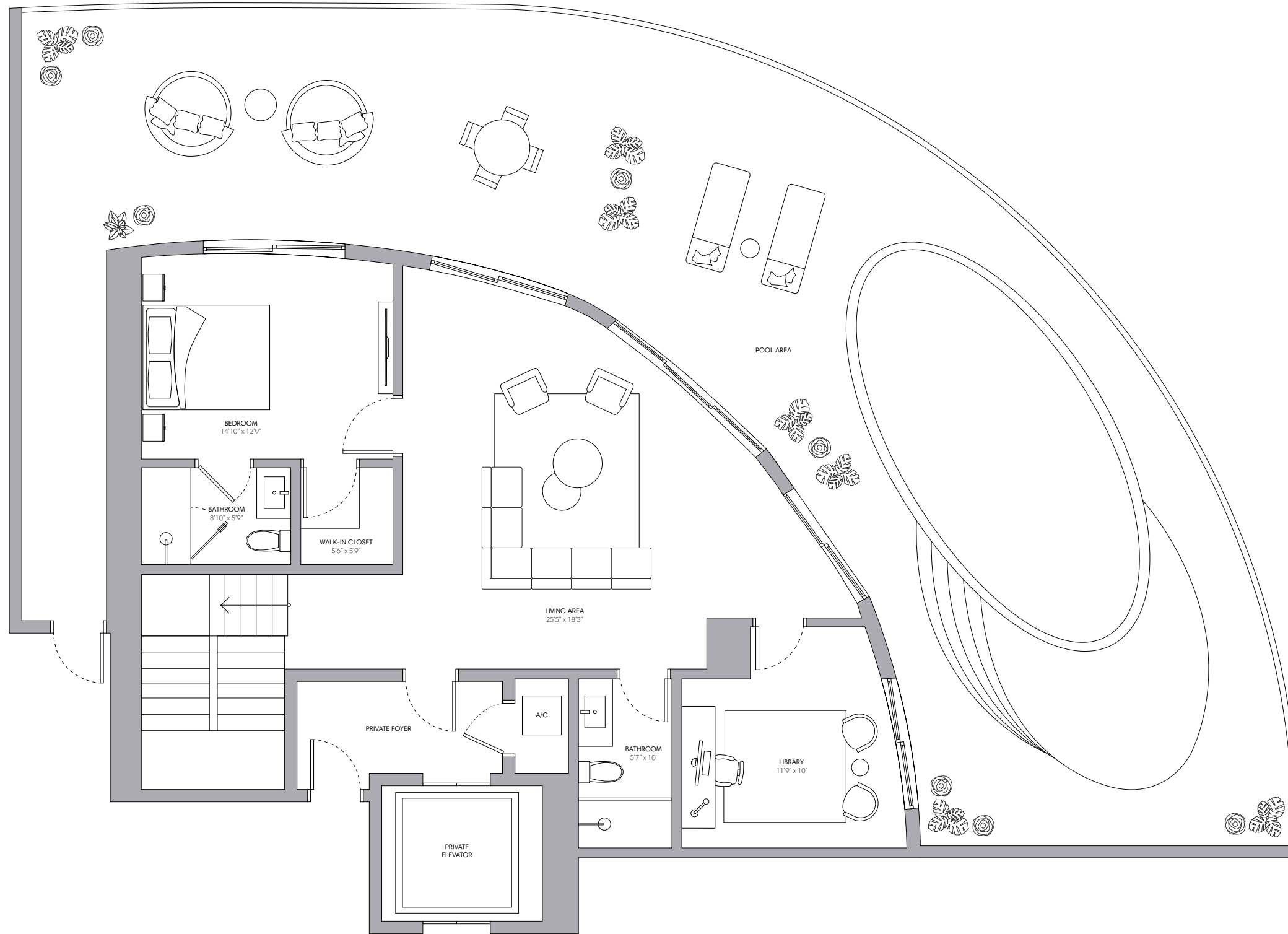


Sales by Fortune Development Sales

STATED DIMENSIONS AND SQUARE FOOTAGES ARE MEASURED TO THE EXTERIOR BOUNDARIES OF THE EXTERIOR WALLS AND THE CENTERLINE OF INTERIOR DEMISING WALLS AND IN FACT VARIES FROM THE SQUARE FOOTAGE AND DIMENSIONS THAT WOULD BE DETERMINED BY USING THE DESCRIPTION AND DEFINITION OF THE "UNIT" SET FORTH IN THE DECLARATION (WHICH GENERALLY ONLY INCLUDES THE INTERIOR AIRSPACE BETWEEN THE PERIMETER WALLS AND EXCLUDES ALL INTERIOR STRUCTURAL COMPONENTS AND OTHER COMMON ELEMENTS). THIS METHOD IS GENERALLY USED IN SALES MATERIALS AND IS PROVIDED TO ALLOW A PROSPECTIVE BUYER TO COMPARE THE UNITS WITH UNITS IN OTHER CONDOMINIUM PROJECTS THAT UTILIZE THE SAME METHOD. FOR THE SQUARE FOOTAGE OF THE UNIT, CALCULATED IN ACCORDANCE WITH THE DEFINITION SET FORTH IN THE DECLARATION, WHICH WILL BE SMALLER THAN STATED ABOVE, SEE THE DECLARATION. ALL DIMENSIONS ARE ESTIMATES WHICH WILL VARY WITH ACTUAL CONSTRUCTION, AND ALL FLOOR PLANS, SPECIFICATIONS AND OTHER DEVELOPMENT PLANS ARE SUBJECT TO CHANGE AND WILL NOT NECESSARILY ACCURATELY REFLECT THE FINAL PLANS AND SPECIFICATIONS FOR THE DEVELOPMENT. ALL DEPICTIONS OF FURNITURE, APPLIANCES, COUNTERS, SOFFITS, FLOOR COVERINGS AND OTHER MATTERS OF DETAIL, INCLUDING, WITHOUT LIMITATION, ITEMS OF FINISH AND DECORATION, ARE CONCEPTUAL ONLY AND ARE NOT NECESSARILY INCLUDED IN EACH UNIT. SAID ITEMS ARE ONLY INCLUDED IF AND TO THE EXTENT PROVIDED IN YOUR PURCHASE AGREEMENT. PLEASE NOTE THAT THE "TOTAL" AREA LISTED HEREON INCLUDES THE PROPOSED SQUARE FOOTAGE OF TERRACE, WHICH IS NOT PART OF THE BOUNDARIES OF THE UNIT AS SET FORTH ON THE DECLARATION. ORAL REPRESENTATIONS CANNOT BE RELIED UPON AS CORRECTLY STATING THE REPRESENTATIONS OF THE DEVELOPER. FOR CORRECT REPRESENTATIONS, MAKE REFERENCE TO THIS BROCHURE AND TO THE DOCUMENTS REQUIRED BY SECTION 718.503, FLORIDA STATUTES, TO BE FURNISHED BY A DEVELOPER TO A BUYER OR LESSEE.

Upper Penthouse II

LEVEL 02



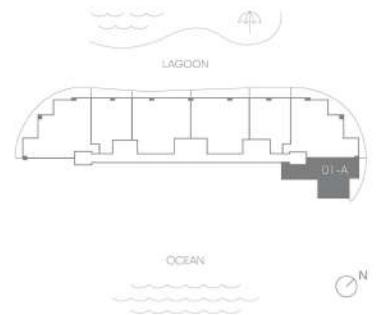
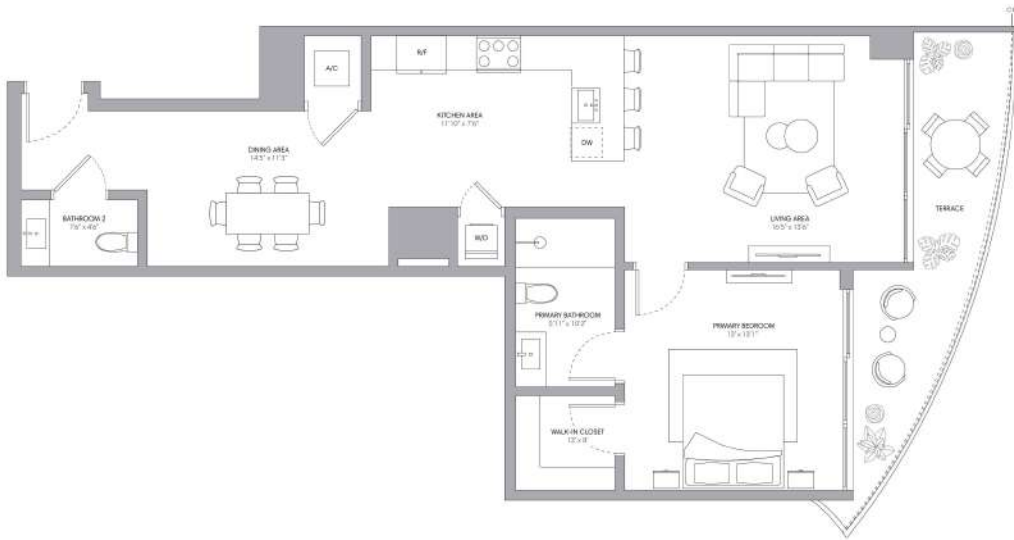
Sales by Fortune Development Sales

STATED DIMENSIONS AND SQUARE FOOTAGES ARE MEASURED TO THE EXTERIOR BOUNDARIES OF THE EXTERIOR WALLS AND THE CENTERLINE OF INTERIOR DEMISING WALLS AND IN FACT VARIES FROM THE SQUARE FOOTAGE AND DIMENSIONS THAT WOULD BE DETERMINED BY USING THE DESCRIPTION AND DEFINITION OF THE "UNIT" SET FORTH IN THE DECLARATION (WHICH GENERALLY ONLY INCLUDES THE INTERIOR AIRSPACE BETWEEN THE PERIMETER WALLS AND EXCLUDES ALL INTERIOR STRUCTURAL COMPONENTS AND OTHER COMMON ELEMENTS). THIS METHOD IS GENERALLY USED IN SALES MATERIALS AND IS PROVIDED TO ALLOW A PROSPECTIVE BUYER TO COMPARE THE UNITS WITH UNITS IN OTHER CONDOMINIUM PROJECTS THAT UTILIZE THE SAME METHOD. FOR THE SQUARE FOOTAGE OF THE UNIT, CALCULATED IN ACCORDANCE WITH THE DEFINITION SET FORTH IN THE DECLARATION, WHICH WILL BE SMALLER THAN STATED ABOVE, SEE THE DECLARATION. ALL DIMENSIONS ARE ESTIMATES WHICH WILL VARY WITH ACTUAL CONSTRUCTION, AND ALL FLOOR PLANS, SPECIFICATIONS AND OTHER DEVELOPMENT PLANS ARE SUBJECT TO CHANGE AND WILL NOT NECESSARILY ACCURATELY REFLECT THE FINAL PLANS AND SPECIFICATIONS FOR THE DEVELOPMENT. ALL DEPICTIONS OF FURNITURE, APPLIANCES, COUNTERS, SOFFITS, FLOOR COVERINGS AND OTHER MATTERS OF DETAIL, INCLUDING, WITHOUT LIMITATION, ITEMS OF FINISH AND DECORATION, ARE CONCEPTUAL ONLY AND ARE NOT NECESSARILY INCLUDED IN EACH UNIT. SAID ITEMS ARE ONLY INCLUDED IF AND TO THE EXTENT PROVIDED IN YOUR PURCHASE AGREEMENT. PLEASE NOTE THAT THE "TOTAL" AREA LISTED HEREON INCLUDES THE PROPOSED SQUARE FOOTAGE OF TERRACE, WHICH IS NOT PART OF THE BOUNDARIES OF THE UNIT AS SET FORTH ON THE DECLARATION. ORAL REPRESENTATIONS CANNOT BE RELIED UPON AS CORRECTLY STATING THE REPRESENTATIONS OF THE DEVELOPER. FOR CORRECT REPRESENTATIONS, MAKE REFERENCE TO THIS BROCHURE AND TO THE DOCUMENTS REQUIRED BY SECTION 718.503, FLORIDA STATUTES, TO BE FURNISHED BY A DEVELOPER TO A BUYER OR LESSEE.

Residence 01-A

1 BEDROOM | 1.5 BATHROOMS

INTERIOR	982 SQ FT 91 SQ M
EXTERIOR A (Floor 4)	153 SQ FT 14 SQ M
EXTERIOR B (Floor 2.5)	153 SQ FT 14 SQ M
EXTERIOR C (Rear 2)	153 SQ FT 14 SQ M
TOTAL	1,441 SQ FT 133 SQ M



One representations cannot be relied upon as merely stating the representations of the developer. For correct representations, reference should be made to the documents required by Section 718.503, Florida Statutes, to be furnished by a developer to a buyer. The dimensions stated for any depicted unit floor plan are approximate because there are various recognized methods for calculating the square footage of a unit. The square footage stated herein is calculated from the exterior boundaries of the exterior walls to the centerline of interior dividing walls without deductions for alcoves, curves, or architectural features. This method typically results in quoted dimensions greater than the dimensions that would be determined by using other accepted methods. The illustrations and images are conceptual. The floor plan, unit layout, locations of windows, doors, closets, plumbing fixtures, mechanical equipment, appliances, structural elements, architectural design elements and the uses, configurations, and entries to rooms may be changed based on final approved plans, permitting, and completed construction. The furniture layout and the use of space illustrated are suggested uses only and not intended to guarantee any specific use of space or accommodation of specific furnishings, furnishings, design features, fixtures, and décor illustrated are conceptual and may not be included with a unit purchase. Consult the developer's prospectus which will be provided to you by the developer to learn what is included with a unit purchase and to review the unit square footage calculation method to be relied upon, which is set forth in the developer's prospectus.

ONE PARK TOWER

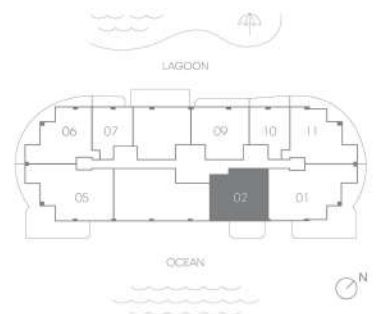
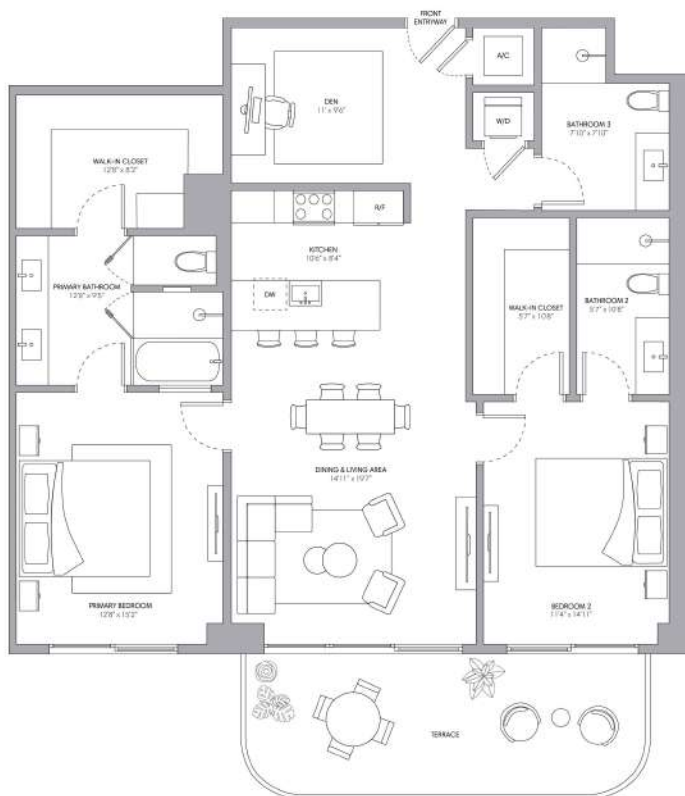
BY TURNBERRY

Residence 02

LEVEL 06

2 BEDROOMS + DEN | 3 BATHROOMS

INTERIOR	1,545 SQ FT 143 SQ M
EXTERIOR	243 SQ FT 23 SQ M
TOTAL	1,788 SQ FT 166 SQ M



Oral representations cannot be relied upon as correctly stating the representations of the developer. For correct representations, reference should be made to the documents required by Section 718.503, Florida Statutes, to be furnished by a developer to a buyer. The dimensions stated for any depicted unit floor plan are approximate because there are various recognized methods for calculating the square footage of a unit. The square footage stated herein is calculated from the exterior boundaries of the exterior walls to the centerline of interior dividing walls without deductions for outcrops, curves, or architectural features. This method typically results in quoted dimensions greater than the dimensions that would be determined by using other accepted methods. The illustrations and images are conceptual. The floor plan, unit layout, locations of windows, doors, closets, plumbing fixtures, mechanical equipment, appliances, structure elements, architectural design elements and the uses, configurations, and entries to rooms may be changed based on final approved plans, permitting, and completed construction. The furniture layout and the use of space illustrated are suggested uses only and not intended to guarantee any specific use of space or accommodation of specific furnishings, furnishings, design features, fixtures, and décor. Illustrations are conceptual and may not be included with a unit purchase. Consult the developer's prospectus which will be provided to you by the developer to learn what is included with a unit purchase and to review the unit square footage calculation method to be relied upon, which is set forth in the developer's prospectus.

ONE PARK TOWER

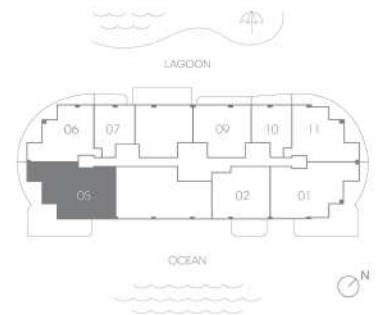
BY TURNBERRY

Residence 05

LEVEL 06

3 BEDROOMS + DEN | 4 BATHROOMS

INTERIOR	2,130 SQ FT 198 SQ M
EXTERIOR	993 SQ FT 92 SQ M
TOTAL	3,123 SQ FT 290 SQ M



Oral representations cannot be relied upon as a correct statement of the representations of the developer. For correct representations, reference should be made to the documents required by Section 718.503, Florida Statutes, to be furnished by a developer to a buyer. The dimensions stated for any depicted unit floor plan are approximate because there are various recognized methods for calculating the square footage of a unit. The square footage stated herein is calculated from the exterior boundaries of the exterior walls to the centerline of interior dividing walls without deductions for alcoves, curves, or architectural features. This method typically results in quoted dimensions greater than the dimensions that would be determined by using other accepted methods. The illustrations and images are conceptual. The floor plan, unit layout, locations of windows, doors, closets, plumbing fixtures, mechanical equipment, appliances, structure elements, architectural design elements and the uses, configurations, and entries to rooms may be changed based on final approved plans, permitting, and completed construction. The furniture layout and the use of space illustrated are suggested uses only and not intended to guarantee any specific use of space or accommodation of specific furnishings, furnishings, design features, fixtures, and décor. Illustrations are conceptual and may not be included with a unit purchase. Consult the developer's prospectus which will be provided to you by the developer to learn what is included with a unit purchase and to review the unit square footage calculation method to be relied upon, which is set forth in the developer's prospectus.

ONE PARK TOWER

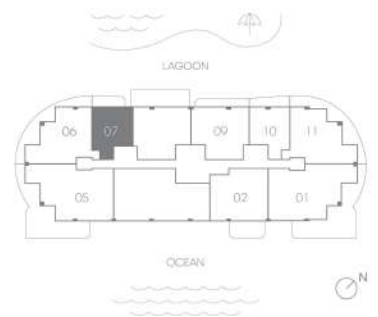
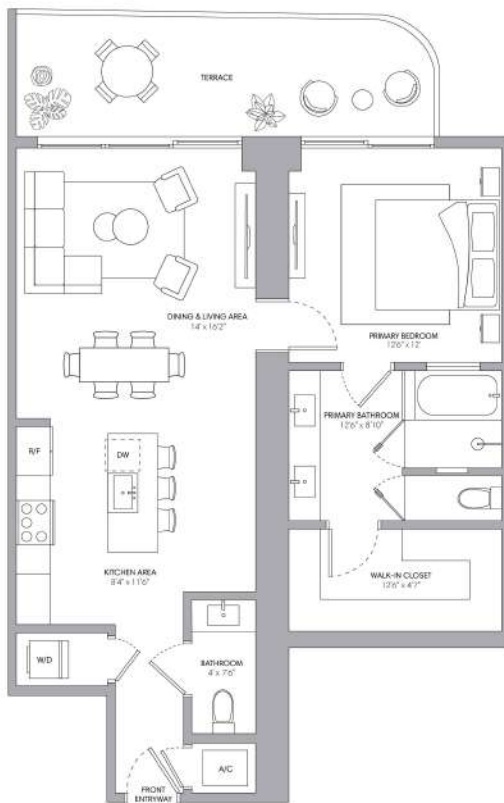
BY TURNBERRY

Residence 07

LEVEL 06

1 BEDROOM | 1.5 BATHROOMS

INTERIOR	962 SQ. FT. 89 SQ. M.
EXTERIOR	199 SQ. FT. 18 SQ. M.
TOTAL	1,161 SQ. FT. 107 SQ. M.



TURNBERRY FORTUNE DEVELOPMENT SALES

Oral representations cannot be relied upon as a remedy against the representations of the developer. For correct representations, reference should be made to the documents required by Section 718.503, Florida Statutes, to be furnished by a developer to a buyer. The dimensions stated for any depicted unit floor plan are approximate because there are various recognized methods for calculating the square footage of a unit. The square footage stated herein is calculated from the exterior boundaries of the exterior walls to the centerline of interior dividing walls without deductions for alcoves, curves, or architectural features. This method typically results in quoted dimensions greater than the dimensions that would be determined by using other accepted methods. The illustrations and images are conceptual. The floor plan, unit layout, locations of windows, doors, closets, plumbing fixtures, mechanical equipment, appliances, structure elements, architectural design elements and the uses, configurations, and entries to rooms may be changed based on final approved plans, permitting, and completed construction. The furniture layout and the use of space illustrated are suggested uses only and not intended to guarantee any specific use of space or accommodation of specific furnishings, furnishings, design features, fixtures, and floor finishes are conceptual and may not be included with a unit purchase. Consult the developer's prospectus which will be provided to you by the developer to learn what is included with a unit purchase and to review the unit square footage calculation method to be relied upon, which is set forth in the developer's prospectus.

ONE PARK TOWER

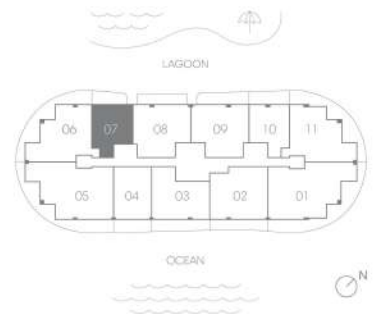
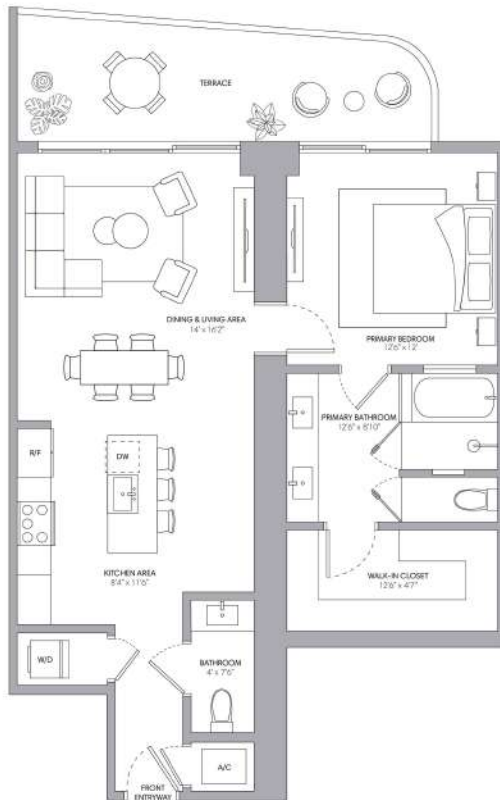
BY TURNBERRY

Residence 07

LEVEL 07

1 BEDROOM | 1.5 BATHROOMS

INTERIOR	962 SQ FT 89 SQ M
EXTERIOR	176 SQ FT 16 SQ M
TOTAL	1,138 SQ FT 105 SQ M



TURNBERRY FORTUNE DEVELOPMENT SALES

Oral representations cannot be relied upon as a substitute for the representations of the developer. For correct representations, reference should be made to the documents required by Section 718.503, Florida Statutes, to be furnished by a developer to a buyer. The dimensions stated for any depicted unit floor plan are approximate because there are various recognized methods for calculating the square footage of a unit. The square footage stated herein is calculated from the exterior boundaries of the exterior walls to the centerline of interior dividing walls without deductions for alcoves, curves, or architectural features. This method typically results in quoted dimensions greater than the dimensions that would be determined by using other accepted methods. The illustrations and images are conceptual. The floor plan, unit layout, locations of windows, doors, closets, plumbing fixtures, mechanical equipment, appliances, structure elements, architectural design elements and the uses, configurations, and entries to rooms may be changed based on final approved plans, permitting, and completed construction. The furniture layout and the use of space illustrated are suggested uses only and not intended to guarantee any specific use of space or accommodation of specific furnishings, furnishings, design features, fixtures, and floor finishes are conceptual and may not be included with a unit purchase. Consult the developer's prospectus which will be provided to you by the developer to learn what is included with a unit purchase and to review the unit square footage calculation method to be relied upon, which is set forth in the developer's prospectus.

ONE PARK TOWER

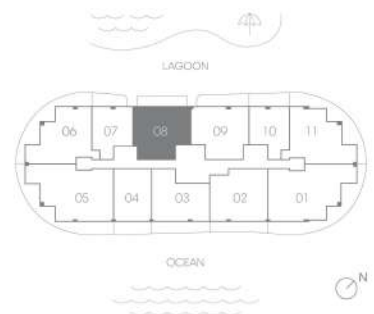
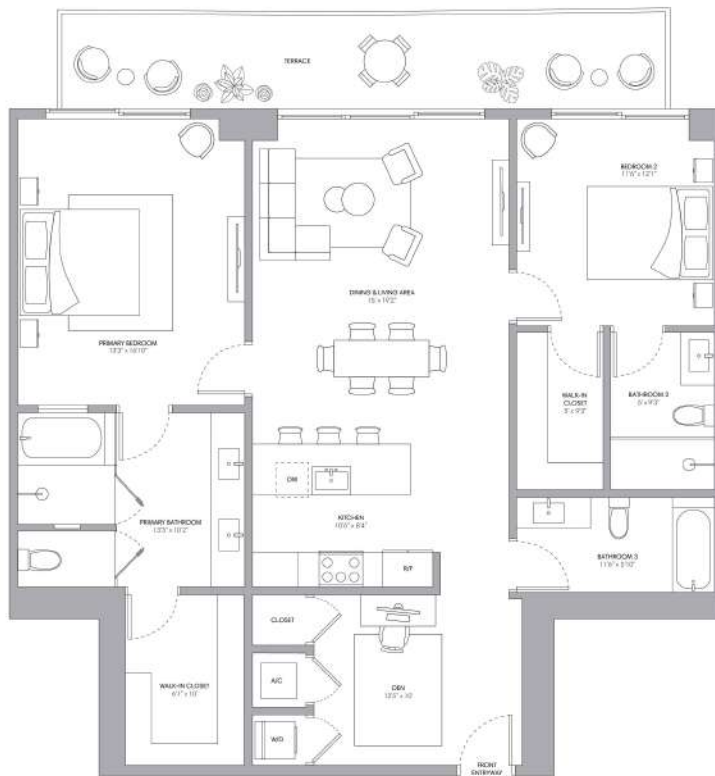
BY TURNBERRY

Residence 08

LEVEL 07

2 BEDROOMS + DEN | 3 BATHROOMS

INTERIOR	1,462 SQ FT 136 SQ M
EXTERIOR	207 SQ FT 19 SQ M
TOTAL	1,669 SQ FT 155 SQ M



Oral representations cannot be relied upon as a substitute for the representations of the developer. For correct representations, reference should be made to the documents required by Section 718.503, Florida Statutes, to be furnished by a developer to a buyer. The dimensions stated for any depicted unit floor plan are approximate because there are various recognized methods for calculating the square footage of a unit. The square footage stated herein is calculated from the exterior boundaries of the exterior walls to the centerline of interior dividing walls without deductions for alcoves, curves, or architectural features. This method typically results in quoted dimensions greater than the dimensions that would be determined by using other accepted methods. The illustrations and images are conceptual. The floor plan, unit layout, locations of windows, doors, closets, plumbing fixtures, mechanical equipment, appliances, structure elements, architectural design elements and the uses, configurations, and entries to rooms may be changed based on final approved plans, permitting, and completed construction. The furniture layout and the use of space illustrated are suggested uses only and not intended to guarantee any specific use of space or accommodation of specific furnishings, furnishings, design features, fixtures, and décor. Illustrations are conceptual and may not be included with a unit purchase. Consult the developer's prospectus which will be provided to you by the developer to learn what is included with a unit purchase and to review the unit square footage calculation method to be relied upon, which is set forth in the developer's prospectus.

ONE PARK TOWER

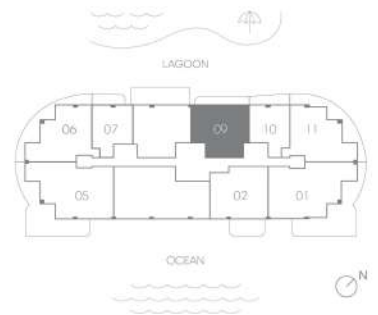
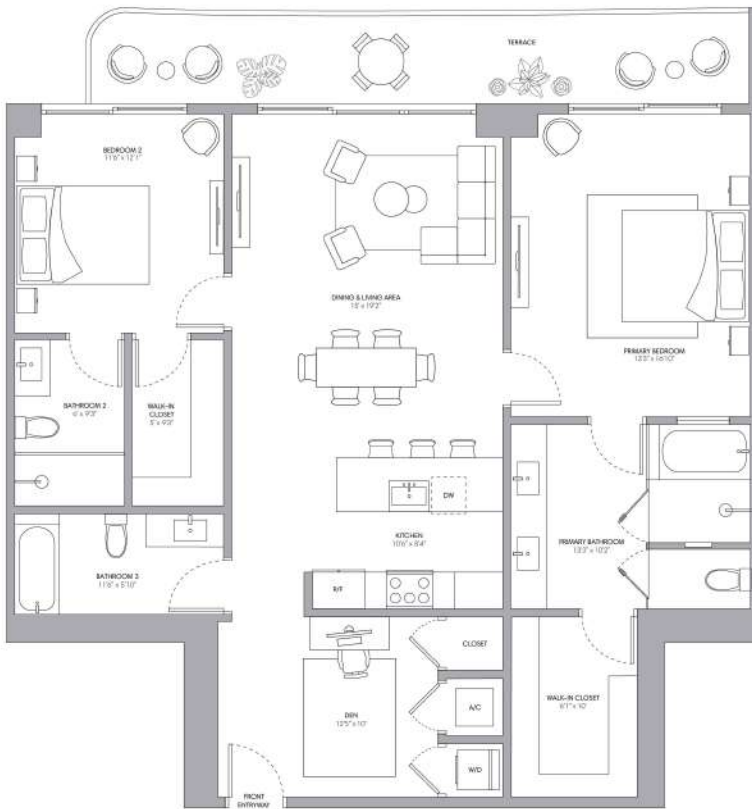
BY TURNBERRY

Residence 09

LEVEL 06

2 BEDROOMS + DEN | 3 BATHROOMS

INTERIOR	1,462 SQ FT 136 M
EXTERIOR	225 SQ FT 21 M
TOTAL	1,687 SQ FT 157 M



TURNBERRY FORTUNE DEVELOPMENT SALES

Oral representations cannot be relied upon as conclusively stating the representations of the developer. For correct representations, reference should be made to the documents required by Section 718.503, Florida Statutes, to be furnished by a developer to a buyer. The dimensions stated for any depicted unit floor plan are approximate because there are various recognized methods for calculating the square footage of a unit. The square footage stated herein is calculated from the exterior boundaries of the exterior walls to the centerline of interior dividing walls without deductions for outcroppings, curves, or architectural features. This method typically results in quoted dimensions greater than the dimensions that would be determined by using other accepted methods. The illustrations and images are conceptual. The floor plan, unit layout, locations of windows, doors, closets, plumbing fixtures, mechanical equipment, appliances, structure elements, architectural design elements and the uses, configurations, and entries to rooms may be changed based on final approved plans, permitting, and completed construction. The furniture layout and the use of space illustrated are suggested uses only and not intended to guarantee any specific use of space or accommodation of specific furnishings, furnishings, design features, fixtures, and décor. Illustrations are conceptual and may not be included with a unit purchase. Consult the developer's prospectus which will be provided to you by the developer to learn what is included with a unit purchase and to review the unit square footage calculation method to be relied upon, which is set forth in the developer's prospectus.

ONE PARK TOWER

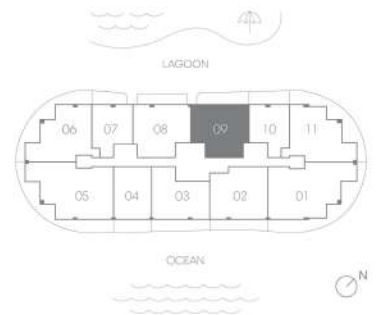
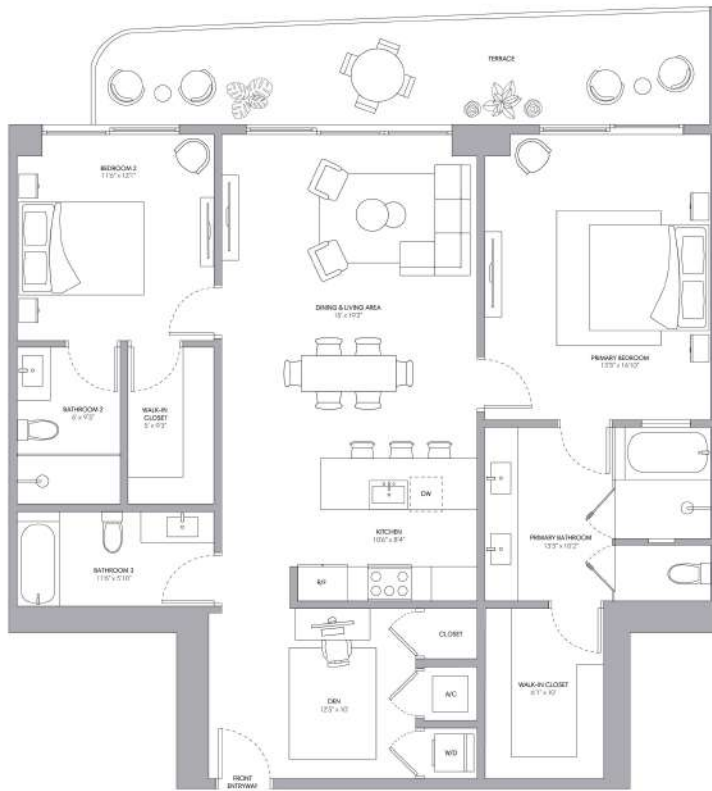
BY TURNBERRY

Residence 09

LEVEL 07

2 BEDROOMS + DEN | 3 BATHROOMS

INTERIOR	1,462 SQ. FT. 136 SQ. M.
EXTERIOR	263 SQ. FT. 24 SQ. M.
TOTAL	1,725 SQ. FT. 160 SQ. M.



TURNBERRY FORTUNE DEVELOPMENT SALES

Oral representations cannot be relied upon as a substitute for the representations of the developer. For correct representations, reference should be made to the documents required by Section 718.503, Florida Statutes, to be furnished by a developer to a buyer. The dimensions stated for any depicted unit floor plan are approximate because there are various recognized methods for calculating the square footage of a unit. The square footage stated herein is calculated from the exterior boundaries of the exterior walls to the centerline of interior dividing walls without deductions for outcrops, curves, or architectural features. This method typically results in quoted dimensions greater than the dimensions that would be determined by using other accepted methods. The illustrations and images are conceptual. The floor plan, unit layout, locations of windows, doors, closets, plumbing fixtures, mechanical equipment, appliances, structure elements, architectural design elements and the uses, configurations, and entries to rooms may be changed based on final approved plans, permitting, and completed construction. The furniture layout and the use of space illustrated are suggested uses only and not intended to guarantee any specific use of space or accommodation of specific furnishings, furnishings, design features, fixtures, and décor. Illustrations are conceptual and may not be included with a unit purchase. Consult the developer's prospectus which will be provided to you by the developer to learn what is included with a unit purchase and to review the unit square footage calculation method to be relied upon, which is set forth in the developer's prospectus.

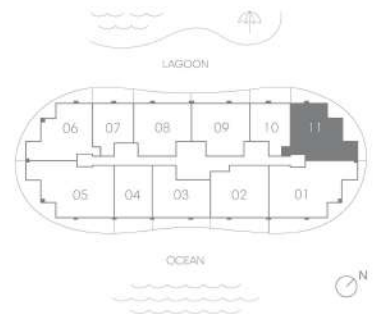
ONE PARK TOWER

BY TURNBERRY

Residence II

2 BEDROOMS + DEN | 3 BATHROOMS

INTERIOR	1,571 SQ FT	146 SQ M
EXTERIOR A (Floors 2, 5, 8, 11, 15, 18, 21, 24, 25, 28)	625 SQ FT	58 SQ M
EXTERIOR B (Floors 4, 7, 10, 14, 17, 20, 23, 26, 29)	618 SQ FT	57 SQ M
EXTERIOR C (Floors 6, 9, 12, 16, 19, 22, 25, 28, 30)	601 SQ FT	56 SQ M
TOTAL	2,172 - 2,196 SQ FT	202 - 204 SQ M



Oral representations cannot be relied upon as a correct statement of the representations of the developer. For correct representations, reference should be made to the documents required by Section 718.503, Florida Statutes, to be furnished by a developer to a buyer. The dimensions stated for any depicted unit floor plan are approximate because there are various recognized methods for calculating the square footage of a unit. The square footage stated herein is calculated from the exterior boundaries of the exterior walls to the centerline of interior dividing walls without deductions for alcoves, curves, or architectural features. This method typically results in quoted dimensions greater than the dimensions that would be determined by using other accepted methods. The illustrations and images are conceptual. The floor plan, unit layout, locations of windows, doors, closets, plumbing fixtures, mechanical equipment, appliances, structure elements, architectural design elements and the uses, configurations, and entries to rooms may be changed based on final approved plans, permitting, and completed construction. The furniture layout and the use of space illustrated are suggested uses only and not intended to guarantee any specific use of space or accommodation of specific furnishings, furnishings, design features, fixtures, and floor finishes are conceptual and may not be included with a unit purchase. Consult the developer's prospectus which will be provided to you by the developer to learn what is included with a unit purchase and to review the unit square footage calculation method to be relied upon, which is set forth in the developer's prospectus.

TURNBERRY FORTUNE DEVELOPMENT SALES

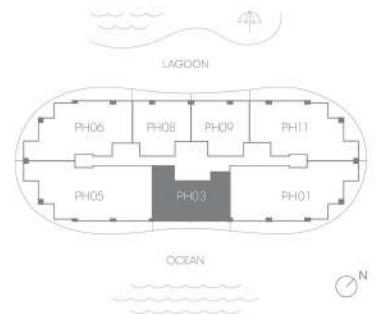
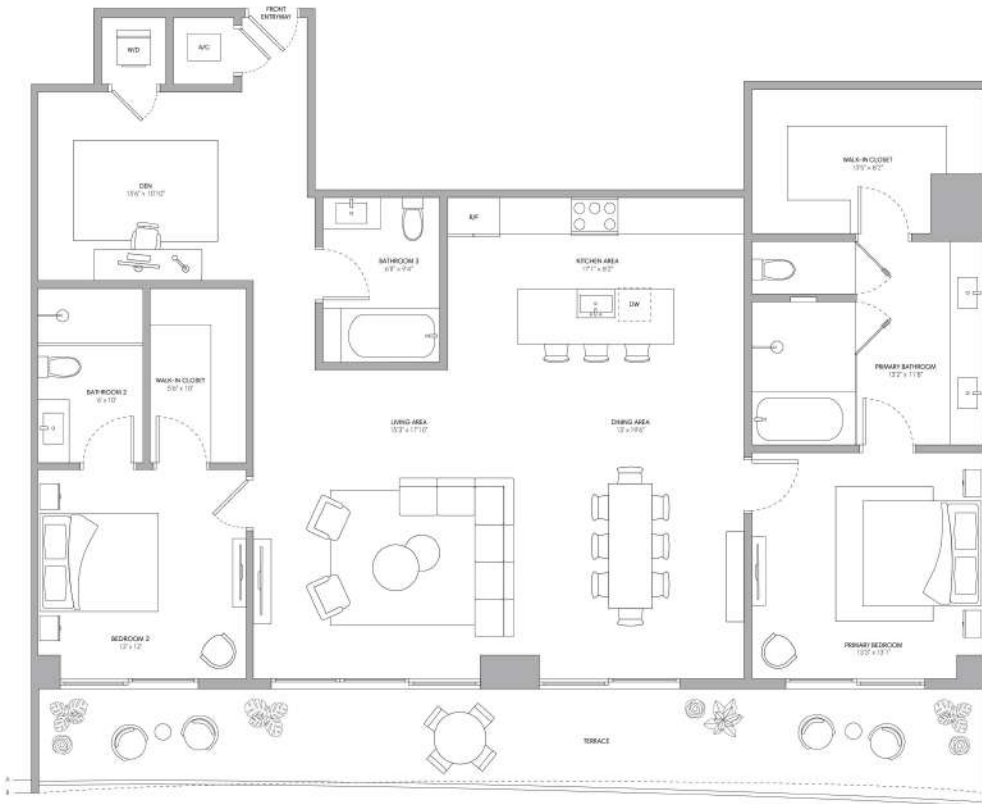
ONE PARK TOWER

BY TURNBERRY

Penthouse 03

2 BEDROOMS + DEN | 3 BATHROOMS

INTERIOR	1,816 SQ FT 168 SQ M
EXTERIOR A (Floor 3)	350 SQ FT 33 SQ M
EXTERIOR B (Floor 3)	329 SQ FT 31 SQ M
TOTAL	2,145 - 2,166 SQ FT 199 - 201 SQ M



Oral representations cannot be relied upon as a remedy against the representations of the developer. For correct representations, reference should be made to the documents required by Section 718.503, Florida Statutes, to be furnished by a developer to a buyer. The dimensions stated for any depicted unit floor plan are approximate because there are various recognized methods for calculating the square footage of a unit. The square footage stated herein is calculated from the exterior boundary of the exterior walls to the centerline of interior demising walls without deductions for alcoves, curves, or architectural features. This method typically results in quoted dimensions greater than the dimensions that would be determined by using other accepted methods. The illustrations and images are conceptual. The floor plan, unit layout, locations of windows, doors, closets, plumbing fixtures, mechanical equipment, appliances, structure elements, architectural design elements and the uses, configurations, and entries to rooms may be changed based on final approved plans, permitting, and completed construction. The furniture layout and the use of space illustrated are suggested uses only and not intended to guarantee any specific use of space or accommodation of specific furnishings, furnishings, design features, fixtures, and décor. Illustrations are conceptual and may not be included with a unit purchase. Consult the developer's prospectus which will be provided to you by the developer to learn what is included with a unit purchase and to review the unit square footage calculation method to be relied upon, which is set forth in the developer's prospectus.

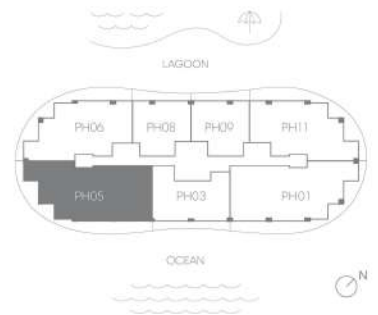
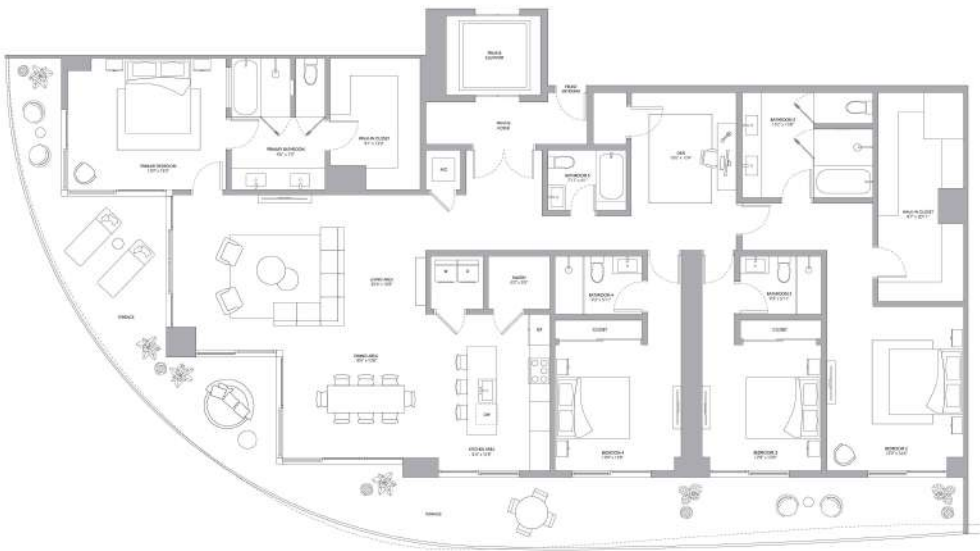
ONE PARK TOWER

BY TURNBERRY

Penthouse 05

4 BEDROOMS + DEN | 5 BATHROOMS

INTERIOR	3,210 SQ FT 298 SQ M
EXTERIOR A (Floor 30)	933 SQ FT 87 SQ M
EXTERIOR B (Floor 31)	912 SQ FT 85 SQ M
TOTAL	4,122 - 4,143 SQ FT 383 - 385 SQ M



Oral representations cannot be relied upon as a remedy against the representations of the developer. For correct representations, reference should be made to the documents required by Section 718.503, Florida Statutes, to be furnished by a developer to a buyer. The dimensions stated for any depicted unit floor plan are approximate because there are various recognized methods for calculating the square footage of a unit. The square footage stated herein is calculated from the exterior boundary of the exterior walls to the centerline of interior dividing walls without deductions for alcoves, curves, or architectural features. This method typically results in quoted dimensions greater than the dimensions that would be determined by using other accepted methods. The illustrations and images are conceptual. The floor plan, unit layout, locations of windows, doors, closets, plumbing fixtures, mechanical equipment, appliances, structural elements, architectural design elements and the uses, configurations, and entries to rooms may be changed based on final approved plans, permitting, and completed construction. The furniture layout and the use of space illustrated are suggested uses only and not intended to guarantee any specific use of space or accommodation of specific furnishings, furniture, design features, fixtures, and floor finishes are conceptual and may not be included with a unit purchase. Consult the developer's prospectus which will be provided to you by the developer to learn what is included with a unit purchase and to review the unit square footage calculation method to be relied upon, which is set forth in the developer's prospectus.

ONE PARK TOWER

BY TURNBERRY

Penthouse 06

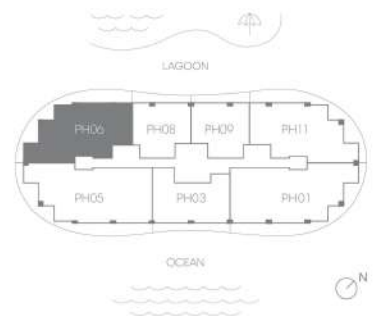
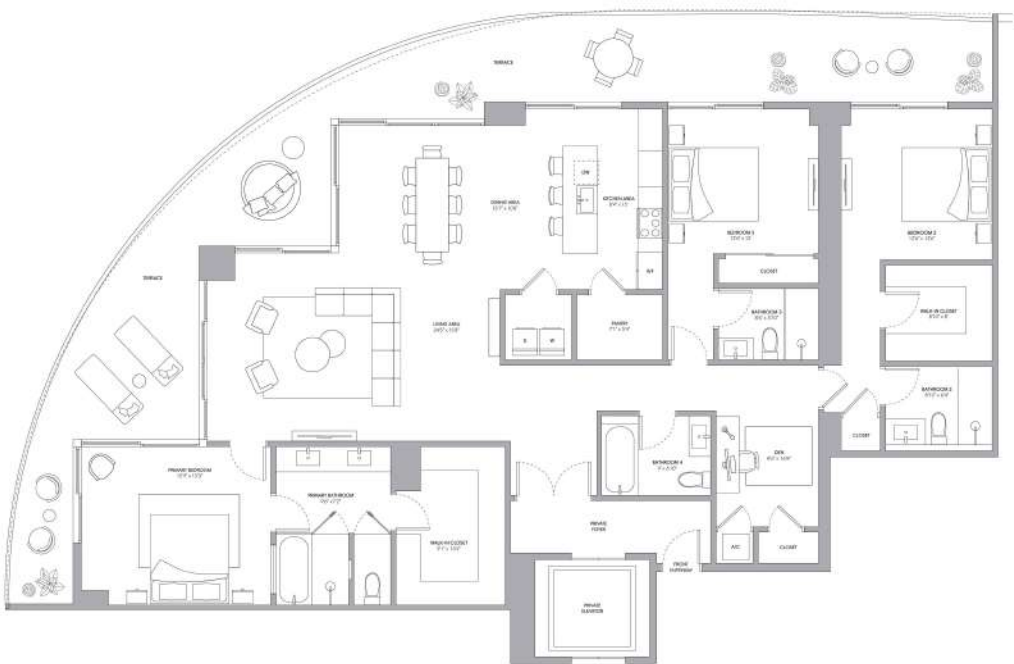
3 BEDROOMS + DEN | 4 BATHROOMS

INTERIOR 2,531 SQ FT | 235 SQ M

EXTERIOR A (Floor 30) 850 SQ FT | 79 SQ M

EXTERIOR B (Floor 31) 825 SQ FT | 77 SQ M

TOTAL 3,356 - 3,381 SQ FT | 312 - 314 SQ M

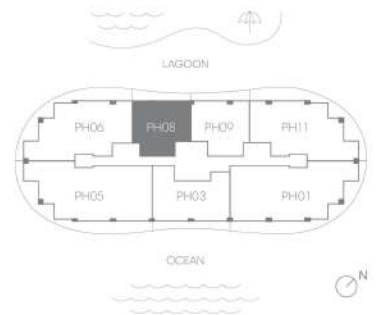
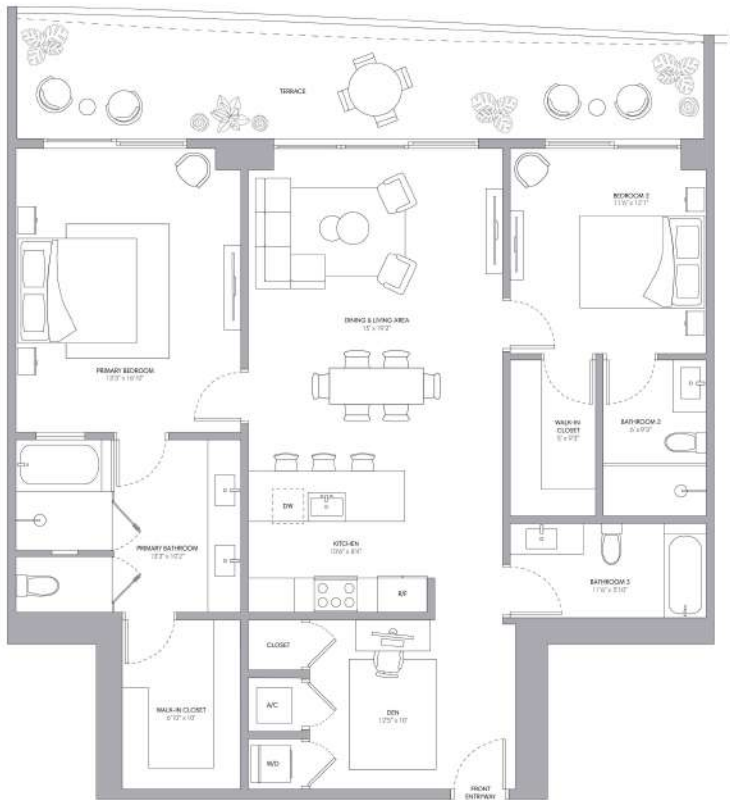


Oral representations cannot be relied upon as a substitute for the representations of the developer. For correct representations, reference should be made to the documents required by Section 718.503, Florida Statutes, to be furnished by a developer to a buyer. The dimensions stated for any depicted unit floor plan are approximate because there are various recognized methods for calculating the square footage of a unit. The square footage stated herein is calculated from the exterior boundaries of the exterior walls to the centerline of interior dividing walls without deductions for alcoves, curves, or architectural features. This method typically results in quoted dimensions greater than the dimensions that would be determined by using other accepted methods. The illustrations and images are conceptual. The floor plan, unit layout, locations of windows, doors, closets, plumbing fixtures, mechanical equipment, appliances, structural elements, architectural design elements and the uses, configurations, and entries to rooms may be changed based on final approved plans, permitting, and completed construction. The furniture layout and the use of space illustrated are suggested uses only and not intended to guarantee any specific use of space or accommodation of specific furnishings, furniture, design features, fixtures, and floor finishes are conceptual and may not be included with a unit purchase. Consult the developer's prospectus which will be provided to you by the developer to learn what is included with a unit purchase and to review the unit square footage calculation method to be relied upon, which is set forth in the developer's prospectus.

Penthouse 08

2 BEDROOMS + DEN | 3 BATHROOMS

INTERIOR	1,451 SQ FT 135 SQ M
EXTERIOR A (Floor 3)	299 SQ FT 28 SQ M
EXTERIOR B (Floor 3)	264 SQ FT 26 SQ M
TOTAL	1,715 - 1,750 SQ FT 161 - 163 SQ M

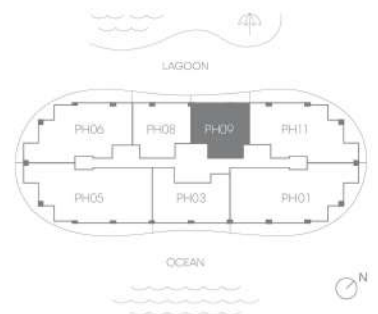
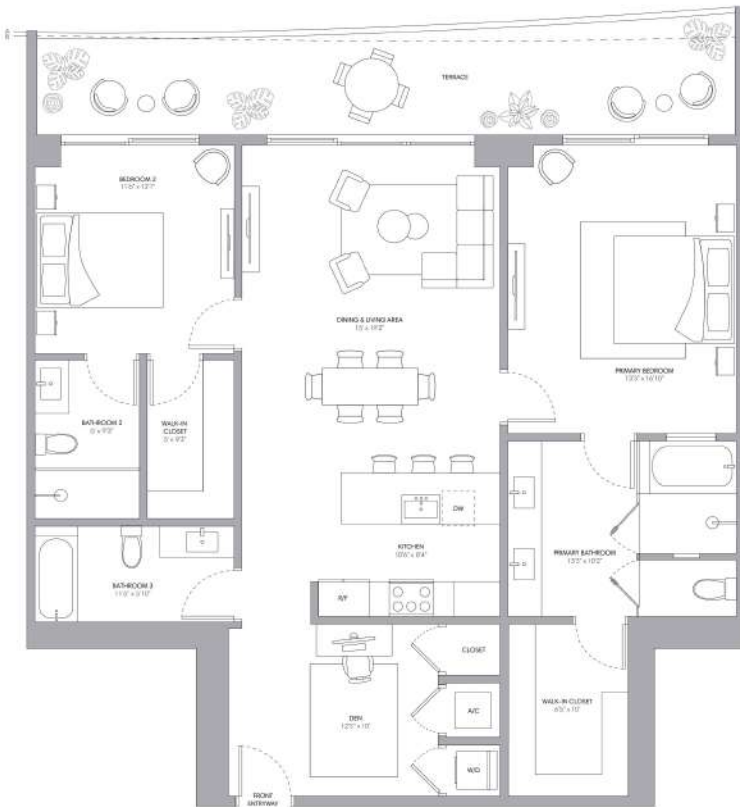


One representations cannot be relied upon as conclusively stating the representations of the developer. For correct representations, reference should be made to the documents required by Section 718.503, Florida Statutes, to be furnished by a developer to a buyer. The dimensions stated for any depicted unit floor plan are approximate because there are various recognized methods for calculating the square footage of a unit. The square footage stated herein is calculated from the exterior boundaries of the exterior walls to the centerline of interior dividing walls without deductions for alcoves, curves, or architectural features. This method typically results in quoted dimensions greater than the dimensions that would be determined by using other accepted methods. The illustrations and images are conceptual. The floor plan, unit layout, locations of windows, doors, closets, plumbing fixtures, mechanical equipment, appliances, structural elements, architectural design elements and the uses, configurations, and entries to rooms may be changed based on final approved plans, permitting, and completed construction. The furniture layout and the use of space illustrated are suggested uses only and not intended to guarantee any specific use of space or accommodation of specific furnishings, furnishings, design features, fixtures, and décor illustrated are conceptual and may not be included with a unit purchase. Consult the developer's prospectus which will be provided to you by the developer to learn what is included with a unit purchase and to review the unit square footage calculation method to be relied upon, which is set forth in the developer's prospectus.

Penthouse 09

2 BEDROOMS + DEN | 3 BATHROOMS

INTERIOR	1,451 SQ FT 135 SQ M
EXTERIOR A (Floor 30)	264 SQ FT 25 SQ M
EXTERIOR B (Floor 31)	249 SQ FT 23 SQ M
TOTAL	1,700 - 1,715 SQ FT 158 - 160 SQ M



Oral representations cannot be relied upon as conclusively stating the representations of the developer. For correct representations, reference should be made to the documents required by Section 718.503, Florida Statutes, to be furnished by a developer to a buyer. The dimensions stated for any depicted unit floor plan are approximate because there are various recognized methods for calculating the square footage of a unit. The square footage stated herein is calculated from the exterior boundaries of the exterior walls to the centerline of interior dividing walls without deductions for alcoves, curves, or architectural features. This method typically results in quoted dimensions greater than the dimensions that would be determined by using other accepted methods. The illustrations and images are conceptual. The floor plan, unit layout, location of windows, doors, closets, plumbing fixtures, mechanical equipment, appliances, structural elements, architectural design elements and the uses, configurations, and entries to rooms may be changed based on final approved plans, permitting, and completed construction. The furniture layout and the use of space illustrated are suggested uses only and not intended to guarantee any specific use of space or accommodation of specific furnishings, furnishings, design features, fixtures, and décor illustrated are conceptual and may not be included with a unit purchase. Consult the developer's prospectus which will be provided to you by the developer to learn what is included with a unit purchase and to review the unit square footage calculation method to be relied upon, which is set forth in the developer's prospectus.

Penthouse II

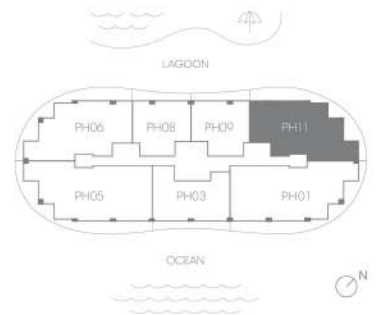
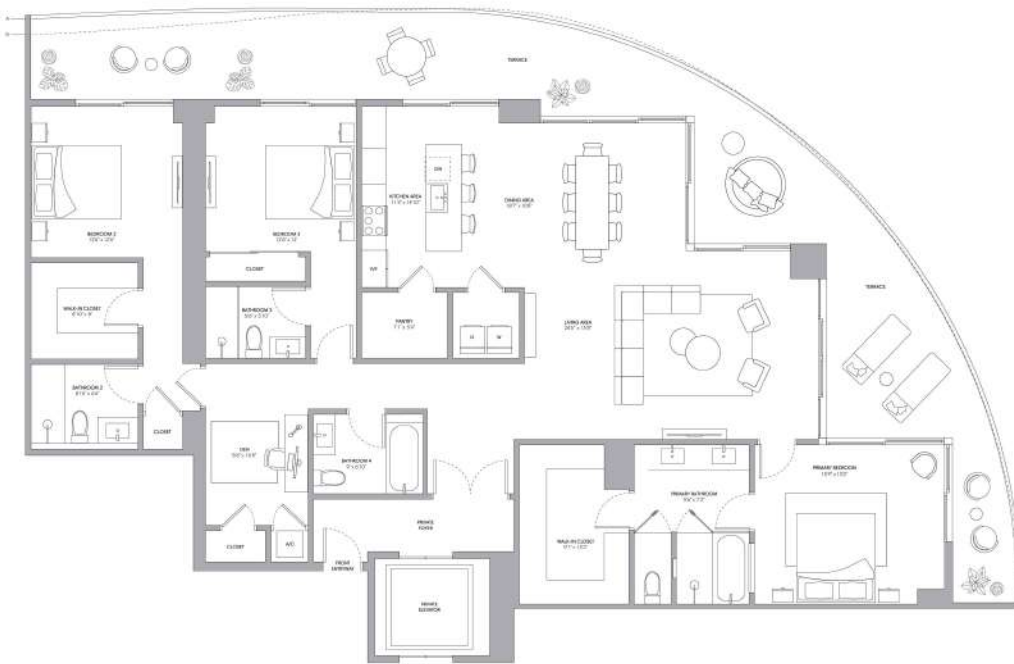
3 BEDROOMS + DEN | 4 BATHROOMS

INTERIOR 2,533 SQ FT | 235 SQ M

EXTERIOR A (Floor 30) 850 SQ FT | 79 SQ M

EXTERIOR B (Floor 31) 833 SQ FT | 77 SQ M

TOTAL 3,366 - 3,383 SQ FT | 312 - 314 SQ M



One representations cannot be relied upon as merely stating the representations of the developer. For correct representations, reference should be made to the documents required by Section 718.503, Florida Statute, to be furnished by a developer to a buyer. The dimensions stated for any depicted unit floor plan are approximate because there are various recognized methods for calculating the square footage of a unit. The square footage stated herein is calculated from the exterior boundary of the exterior walls to the centerline of interior dividing walls without deductions for alcoves, curves, or architectural features. This method typically results in quoted dimensions greater than the dimensions that would be determined by using other accepted methods. The illustrations and images are conceptual. The floor plan, unit layout, locations of windows, doors, closets, plumbing fixtures, mechanical equipment, appliances, structure elements, architectural design elements and the uses, configurations, and entries to rooms may be changed based on final approved plans, permitting, and completed construction. The furniture layout and the use of space illustrated are suggested uses only and not intended to guarantee any specific use of space or accommodation of specific furnishings, furnishings, design features, fixtures, and floor finishes are conceptual and may not be included with a unit purchase. Consult the developer's prospectus which will be provided to you by the developer to learn what is included with a unit purchase and to review the unit square footage calculation method to be relied upon, which is set forth in the developer's prospectus.

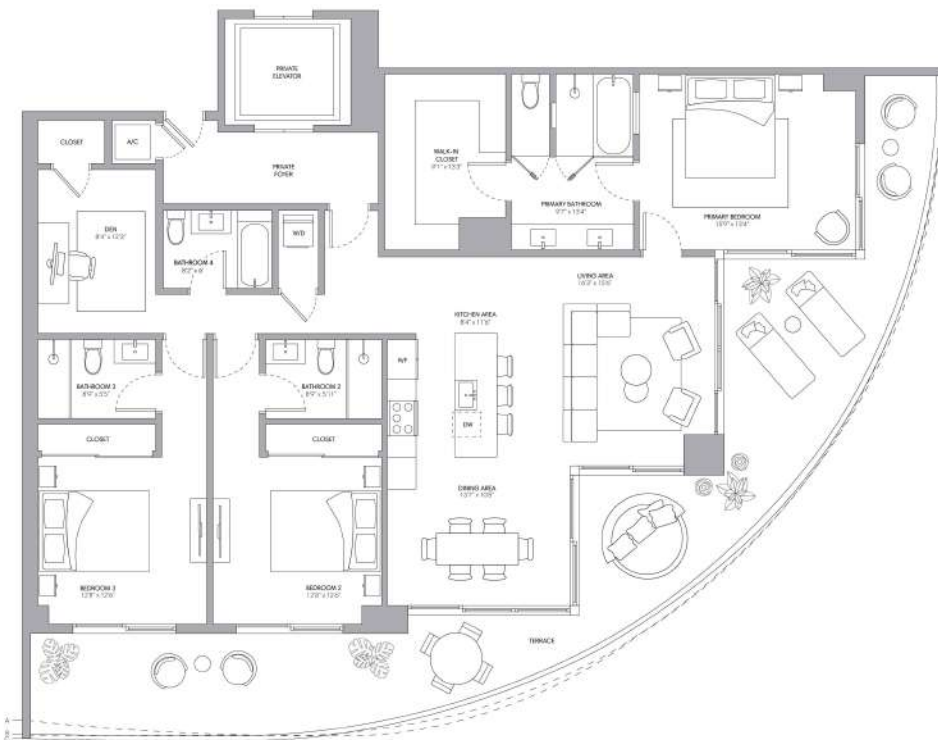
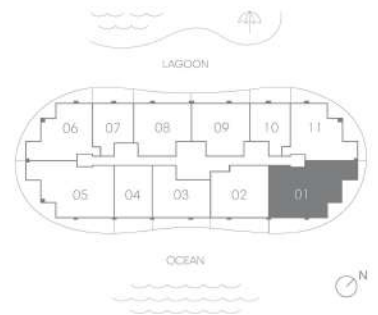
ONE PARK TOWER

BY TURNBERRY

Residence 01

3 BEDROOMS + DEN | 4 BATHROOMS

INTERIOR	2,131 SQ FT	198 SQ M
EXTERIOR A (Floors 10, 14, 17, 20, 23, 26, 29)	747 SQ FT	69 SQ M
EXTERIOR B (Floors 11, 15, 18, 21, 24, 27)	733 SQ FT	68 SQ M
EXTERIOR C (Floors 12, 16, 19, 22, 25, 28)	732 SQ FT	68 SQ M
TOTAL	2,863 - 2,878 SQ FT	266 - 267 SQ M



Oral representations cannot be relied upon as a substitute for the representations of the developer. For correct representations, reference should be made to the documents required by Section 718.503, Florida Statutes, to be furnished by a developer to a buyer. The dimensions stated for any depicted unit floor plan are approximate because there are various recognized methods for calculating the square footage of a unit. The square footage stated herein is calculated from the exterior boundaries of the exterior walls to the centerline of interior dividing walls without deductions for outcrops, curves, or architectural features. This method typically results in quoted dimensions greater than the dimensions that would be determined by other accepted methods. The illustrations and images are conceptual. The floor plan, unit layout, locations of windows, doors, closets, plumbing fixtures, mechanical equipment, appliances, structure elements, architectural design elements and the uses, configurations, and entries to rooms may be changed based on final approved plans, permitting, and completed construction. The furniture layout and the use of space illustrated are suggested uses only and not intended to guarantee any specific use of space or accommodation of specific furnishings, furnishings, design features, fixtures, and décor. Illustrations are conceptual and may not be included with a unit purchase. Consult the developer's prospectus which will be provided to you by the developer to learn what is included with a unit purchase and to review the unit square footage calculation method to be relied upon, which is set forth in the developer's prospectus.

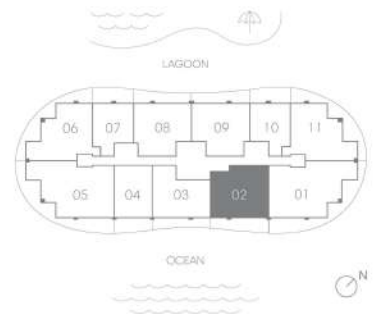
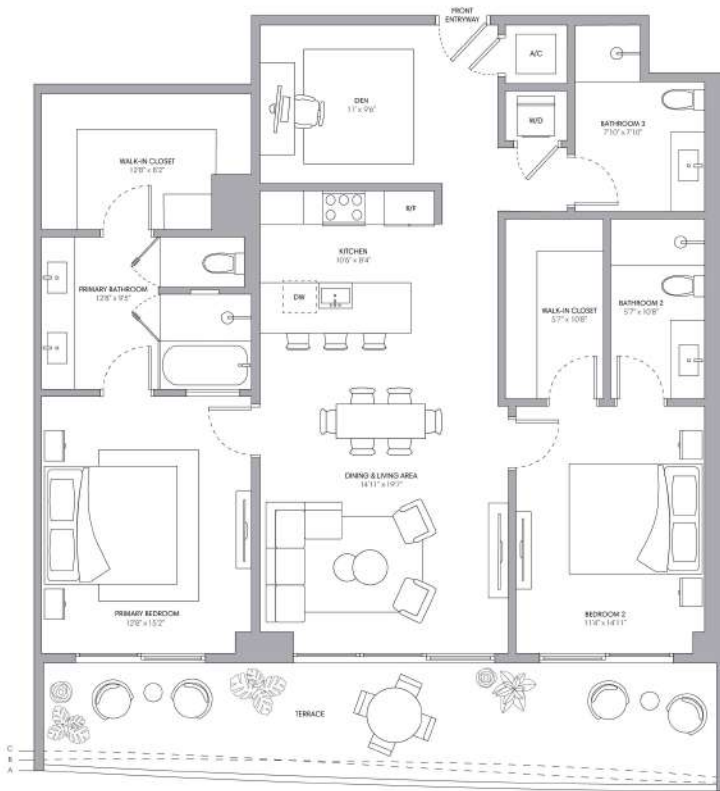
ONE PARK TOWER

BY TURNBERRY

Residence 02

2 BEDROOMS + DEN | 3 BATHROOMS

INTERIOR	1,545 SQ FT 143 SQ M
EXTERIOR A (Rooms 12, 16, 19, 22, 25, 26)	313 SQ FT 29 SQ M
EXTERIOR B (Rooms 1, 11, 15, 18, 21, 24, 27)	284 SQ FT 26 SQ M
EXTERIOR C (Rooms 13, 14, 17, 20, 23, 28, 29)	259 SQ FT 24 SQ M
TOTAL	1,804 - 1,858 SQ FT 167 - 172 SQ M



Oral representations cannot be relied upon as merely stating the representations of the developer. For correct representations, reference should be made to the documents required by Section 718.503, Florida Statutes, to be furnished by a developer to a buyer. The dimensions stated for any depicted unit floor plan are approximate because there are various recognized methods for calculating the square footage of a unit. The square footage stated herein is calculated from the exterior boundaries of the exterior walls to the centerline of interior dividing walls without deductions for alcoves, curves, or architectural features. This method typically results in quoted dimensions greater than the dimensions that would be determined by using other accepted methods. The illustrations and images are conceptual. The floor plan, unit layout, locations of windows, doors, closets, plumbing fixtures, mechanical equipment, appliances, structure elements, architectural design elements and the uses, configurations, and entries to rooms may be changed based on final approved plans, permitting, and completed construction. The furniture layout and the use of space illustrated are suggested uses only and not intended to guarantee any specific use of space or accommodation of specific furnishings, furnishings, design features, fixtures, and decor. Illustrations are conceptual and may not be included with a unit purchase. Consult the developer's prospectus which will be provided to you by the developer to learn what is included with a unit purchase and to review the unit square footage calculation method to be relied upon, which is set forth in the developer's prospectus.

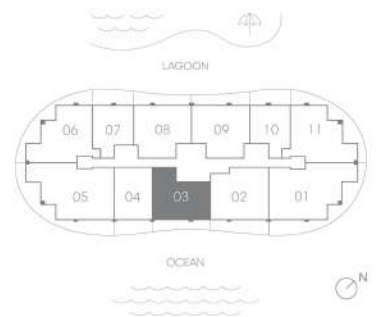
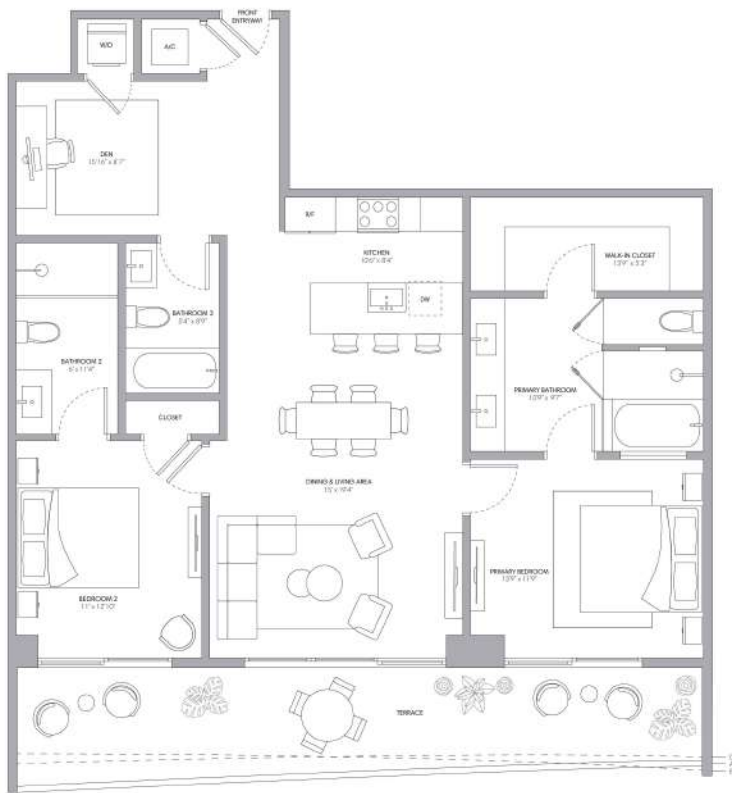
ONE PARK TOWER

BY TURNBERRY

Residence 03

2 BEDROOMS + DEN | 3 BATHROOMS

INTERIOR	1,334 SQ FT 124 SQ M
EXTERIOR A (Floors 10, 14, 17, 20, 23, 26, 29)	279 SQ FT 26 SQ M
EXTERIOR B (Floors 9, 12, 16, 19, 22, 25, 28)	251 SQ FT 23 SQ M
EXTERIOR C (Rooms 1, 11, 15, 18, 21, 24, 27)	244 SQ FT 23 SQ M
TOTAL	1,578 - 1,613 SQ FT 147 - 150 SQ M



TURNBERRY FORTUNE DEVELOPMENT SALES

Oral representations cannot be relied upon as a substitute for the representations of the developer. For correct representations, reference should be made to the documents required by Section 718.503, Florida Statutes, to be furnished by a developer to a buyer. The dimensions stated for any depicted unit floor plan are approximate because there are various recognized methods for calculating the square footage of a unit. The square footage stated herein is calculated from the exterior boundaries of the exterior walls to the centerline of interior dividing walls without deductions for alcoves, curves, or architectural features. This method typically results in quoted dimensions greater than the dimensions that would be determined by using other accepted methods. The illustrations and images are conceptual. The floor plan, unit layout, locations of windows, doors, closets, plumbing fixtures, mechanical equipment, appliances, structural elements, architectural design elements and the uses, configurations, and entries to rooms may be changed based on final approved plans, permitting, and completed construction. The furniture layout and the use of space illustrated are suggested uses only and not intended to guarantee any specific use of space or accommodation of specific furnishings, furnishings, design features, fixtures, and décor. Illustrations are conceptual and may not be included with a unit purchase. Consult the developer's prospectus which will be provided to you by the developer to learn what is included with a unit purchase and to review the unit square footage calculation method to be relied upon, which is set forth in the developer's prospectus.

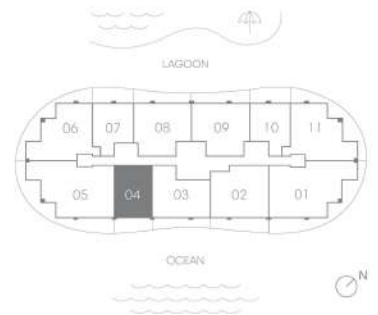
ONE PARK TOWER

BY TURNBERRY

Residence 04

1 BEDROOM + DEN | 2 BATHROOMS

INTERIOR	1,081 SQ FT	100 SQ M
EXTERIOR A (Floors 10, 14, 17, 20, 23, 26, 29)	221 SQ FT	21 SQ M
EXTERIOR B (Floors 8, 11, 15, 18, 21, 24, 27)	200 SQ FT	28 SQ M
EXTERIOR C (Floors 12, 16, 19, 22, 25, 28)	170 SQ FT	16 SQ M
TOTAL	1,251 - 1,302 SQ FT	116 - 128 SQ M



TURNBERRY FORTUNE DEVELOPMENT SALES

Oral representations cannot be relied upon as a substitute for the representations of the developer. For correct representations, reference should be made to the documents required by Section 718.503, Florida Statutes, to be furnished by a developer to a buyer. The dimensions stated for any depicted unit floor plan are approximate because there are various recognized methods for calculating the square footage of a unit. The square footage stated herein is calculated from the exterior boundaries of the exterior walls to the centerline of interior dividing walls without deductions for alcoves, curves, or architectural features. This method typically results in quoted dimensions greater than the dimensions that would be determined by using other accepted methods. The illustrations and images are conceptual. The floor plan, unit layout, location of windows, doors, closets, plumbing fixtures, mechanical equipment, appliances, structural elements, architectural design elements and the uses, configurations, and entries to rooms may be changed based on final approved plans, permitting, and completed construction. The furniture layout and the use of space illustrated are suggested uses only and not intended to guarantee any specific use of space or accommodation of specific furnishings, furnishings, design features, fixtures, and décor illustrated are conceptual and may not be included with a unit purchase. Consult the developer's prospectus which will be provided to you by the developer to learn what is included with a unit purchase and to review the unit square footage calculation method to be relied upon, which is set forth in the developer's prospectus.