

## THE RESIDENCES

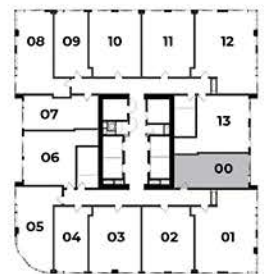
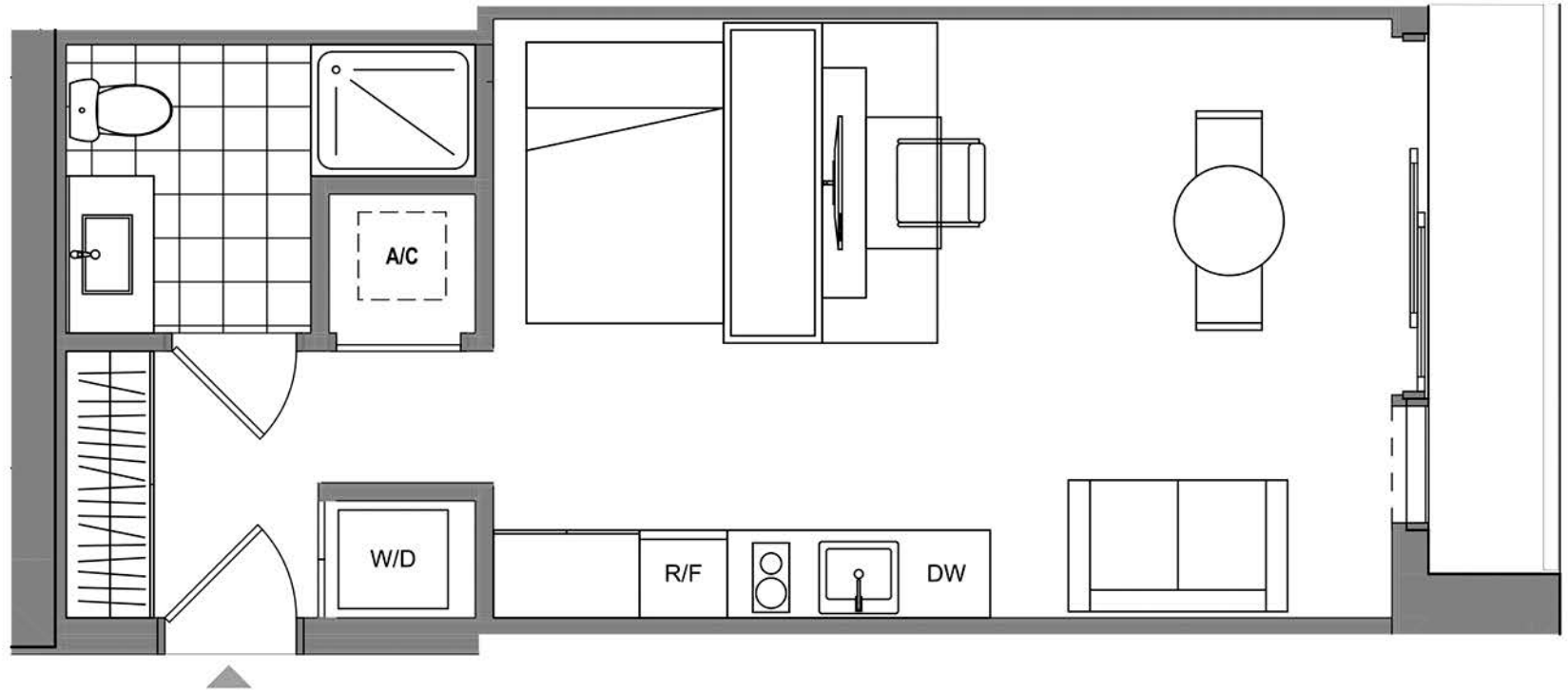
### UNIT 00

Studio / 1 Bath

Interior 458 sq. ft. | 43 m<sup>2</sup>

Exterior 42 sq. ft. | 4 m<sup>2</sup>

**Total 500 sq. ft. | 47 m<sup>2</sup>**



## THE RESIDENCES

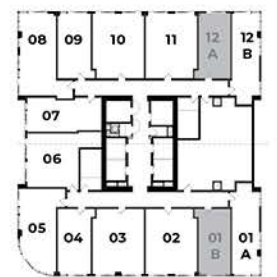
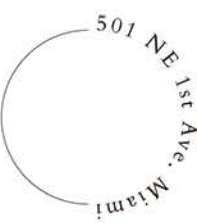
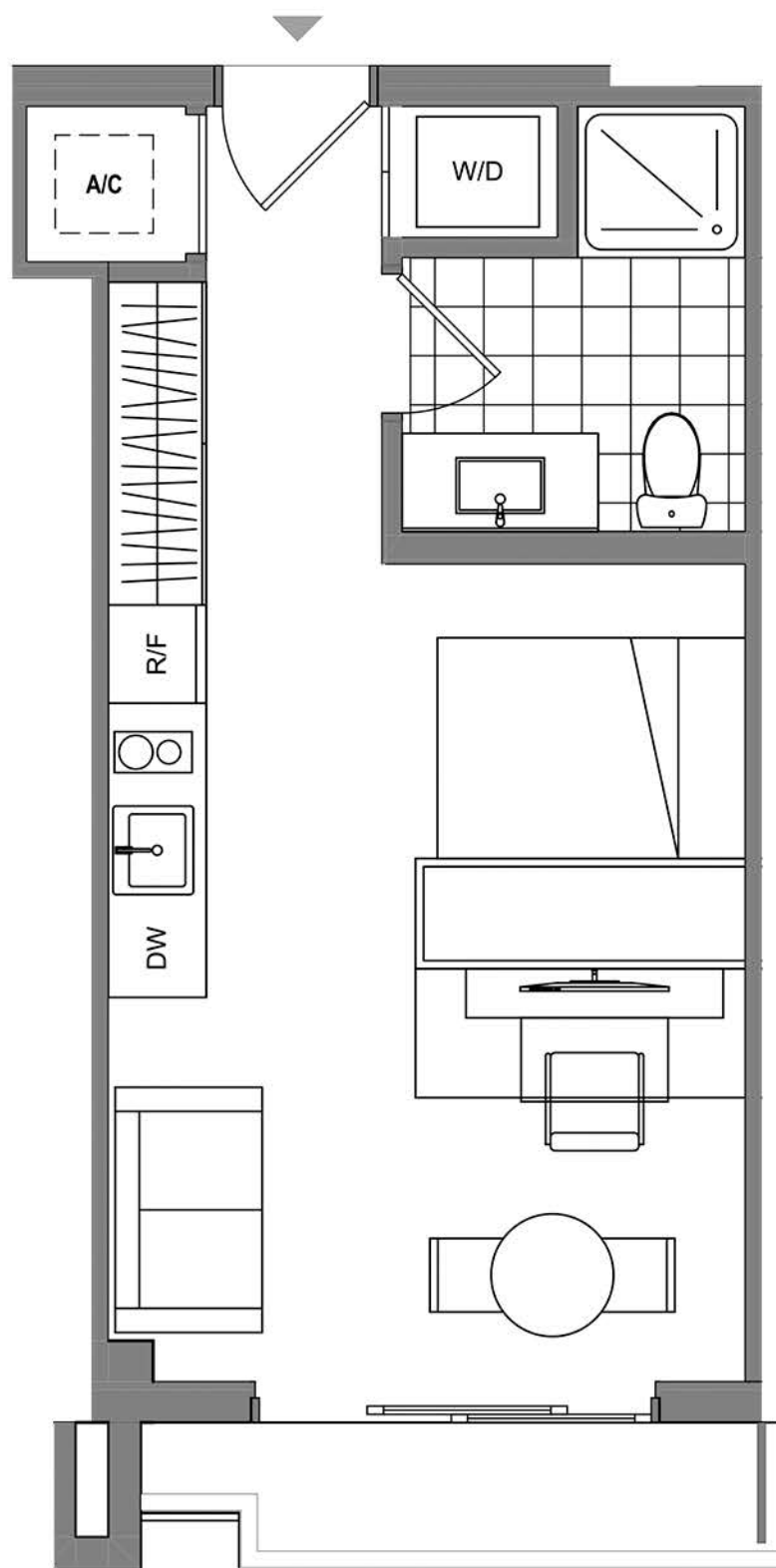
### UNIT 01B/12A

Studio / 1 Bath

Interior 385 sq. ft. | 36 m<sup>2</sup>

Exterior 36 sq. ft. | 3 m<sup>2</sup>

**Total 421 sq. ft. | 39 m<sup>2</sup>**

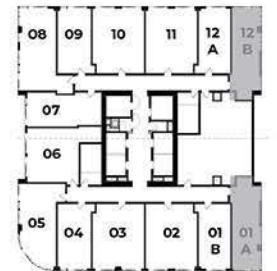
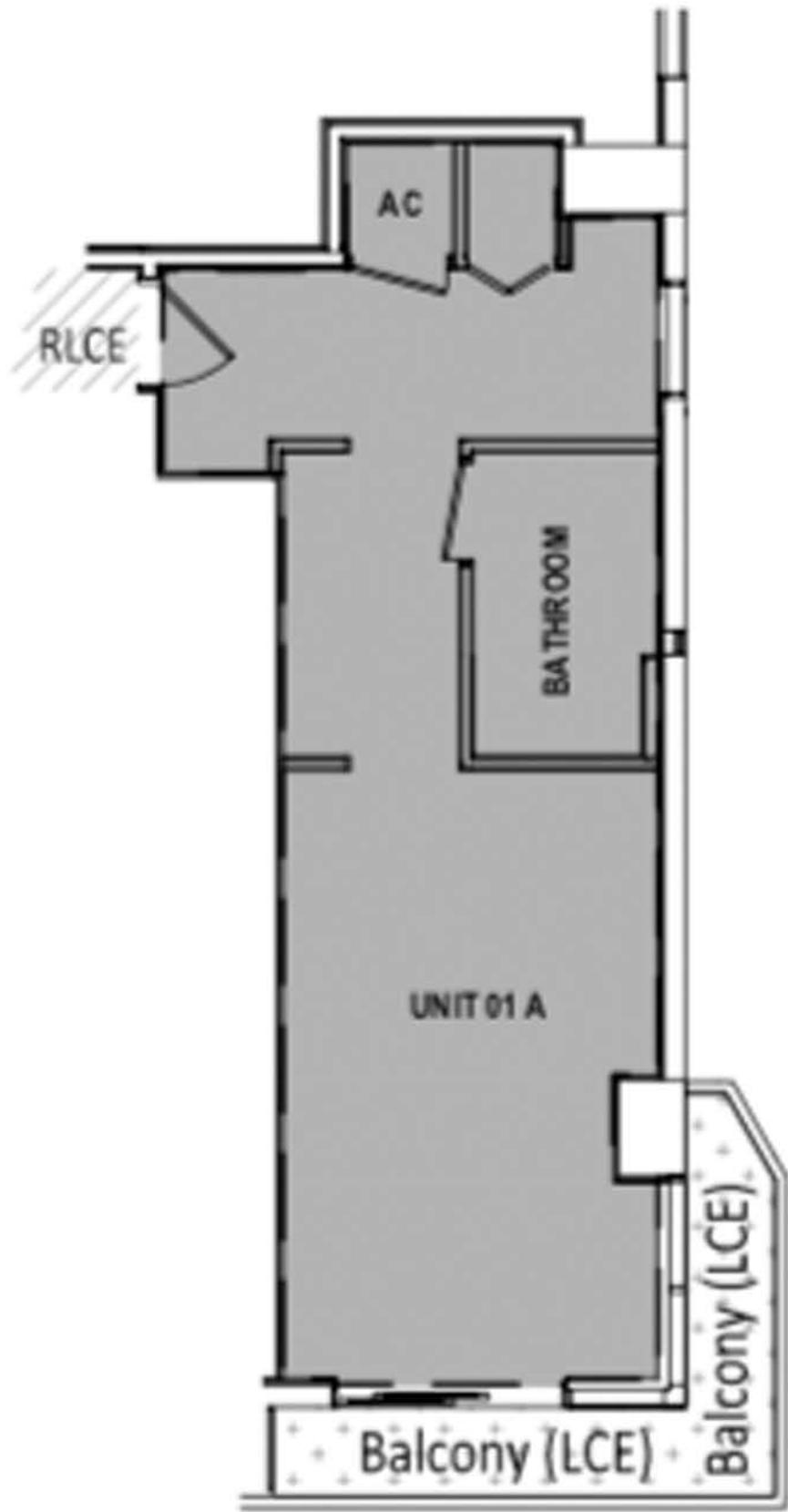


THE  
RESIDENCES

UNIT 01A/12B

Studio / 1 Bath

Interior 458 sq. ft. | 43 m2  
 Exterior 145 sq. ft. | 13 m2  
**Total 603 sq. ft. | 57 m2**



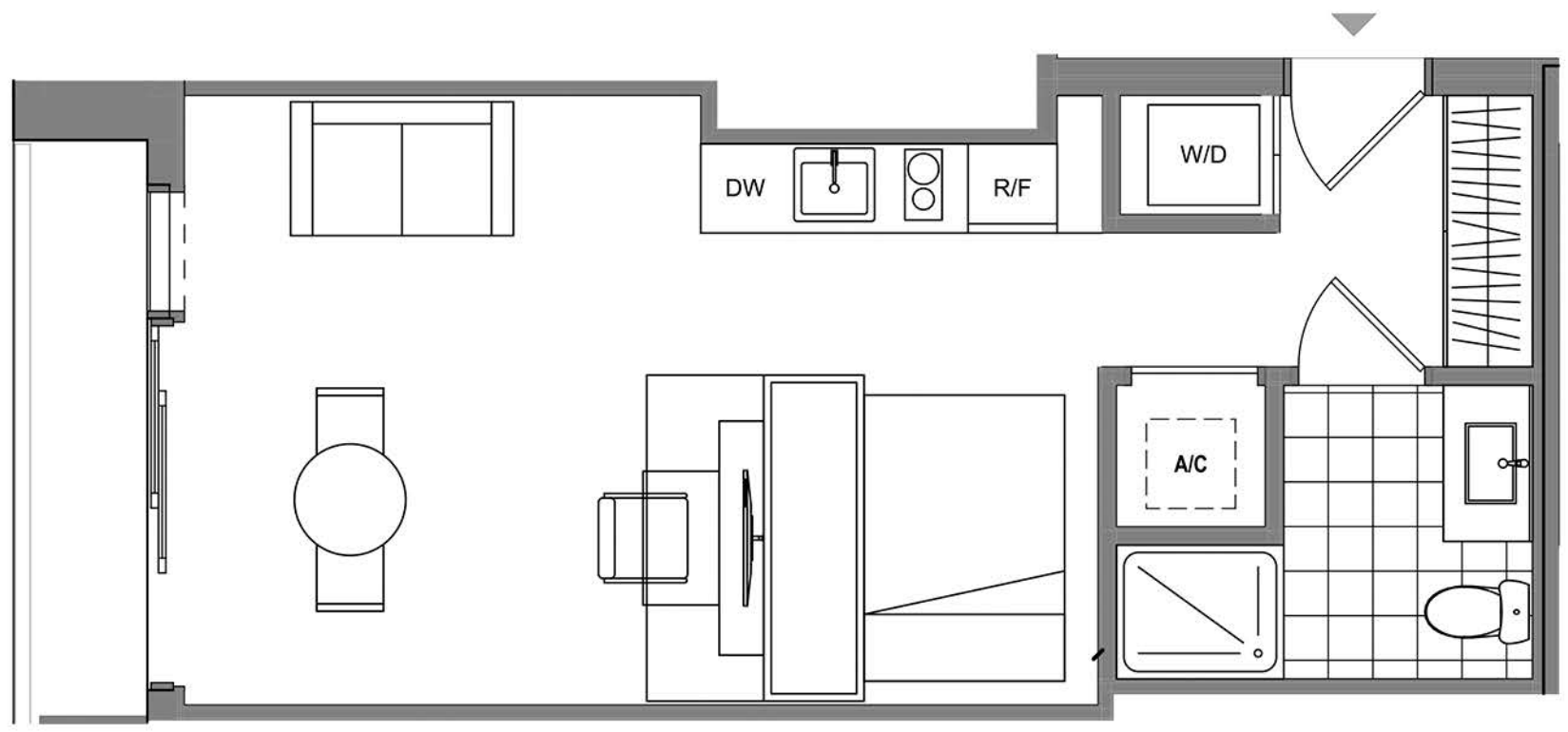
These drawings are conceptual only and are for the convenience of reference. They should not be relied upon as representations, express or implied, of the final detail of the residences. Units shown are examples of unit types and may not depict actual units. Stated square footages are ranges for a particular unit type and are measured to the exterior boundaries of the exterior walls and the centerline of interior demising walls and in fact vary from the area that would be determined by using the description and definition of the unit set forth in the declaration (which generally only includes the interior airspace between the perimeter walls and excludes interior structural components). Note that measurements of rooms set forth on this floorplan are generally taken at the greatest points of each given room (as if the room were a perfect rectangle), without regards for any cutouts. Accordingly, the area of the actual room will typically be smaller than the product obtained by multiplying the stated length times width. All dimensions are approximate and may vary with actual construction, and all floor plans and development plans are subject to change.

## THE RESIDENCES

### UNIT 07

Studio / 1 Bath

Interior 447 sq. ft. | 42 m<sup>2</sup>  
 Exterior 39 sq. ft. | 4 m<sup>2</sup>  
**Total 483 sq. ft. | 46 m<sup>2</sup>**



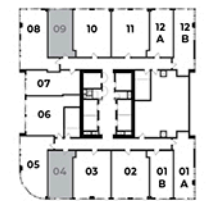
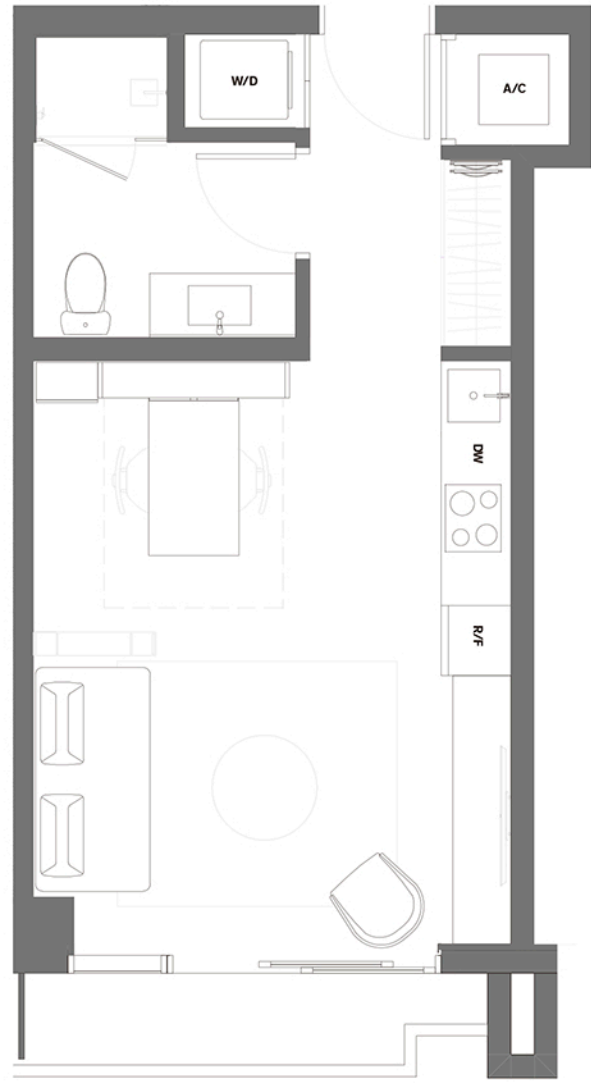
These drawings are conceptual only and are for the convenience of reference. They should not be relied upon as representations, express or implied, of the final detail of the residences. Units shown are examples of unit types and may not depict actual units. Stated square footages are ranges for a particular unit type and are measured to the exterior boundaries of the exterior walls and the centerline of interior demising walls and in fact vary from the area that would be determined by using the description and definition of the unit set forth in the declaration (which generally only includes the interior airspace between the perimeter walls and excludes interior structural components). Note that measurements of rooms set forth on this floorplan are generally taken at the greatest points of each given room (as if the room were a perfect rectangle), without regards for any cutouts. Accordingly, the area of the actual room will typically be smaller than the product obtained by multiplying the stated length times width. All dimensions are approximate and may vary with actual construction, and all floor plans and development plans are subject to change.

THE  
RESIDENCES

UNIT 04/09

Studio / 1 Bath

Interior 401 sq. ft. | 37 m<sup>2</sup>  
 Exterior 38 sq. ft. | 4 m<sup>2</sup>  
 Total 439 sq. ft. | 41 m<sup>2</sup>



## THE RESIDENCES

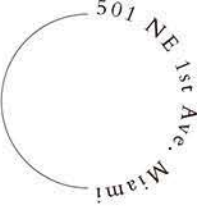
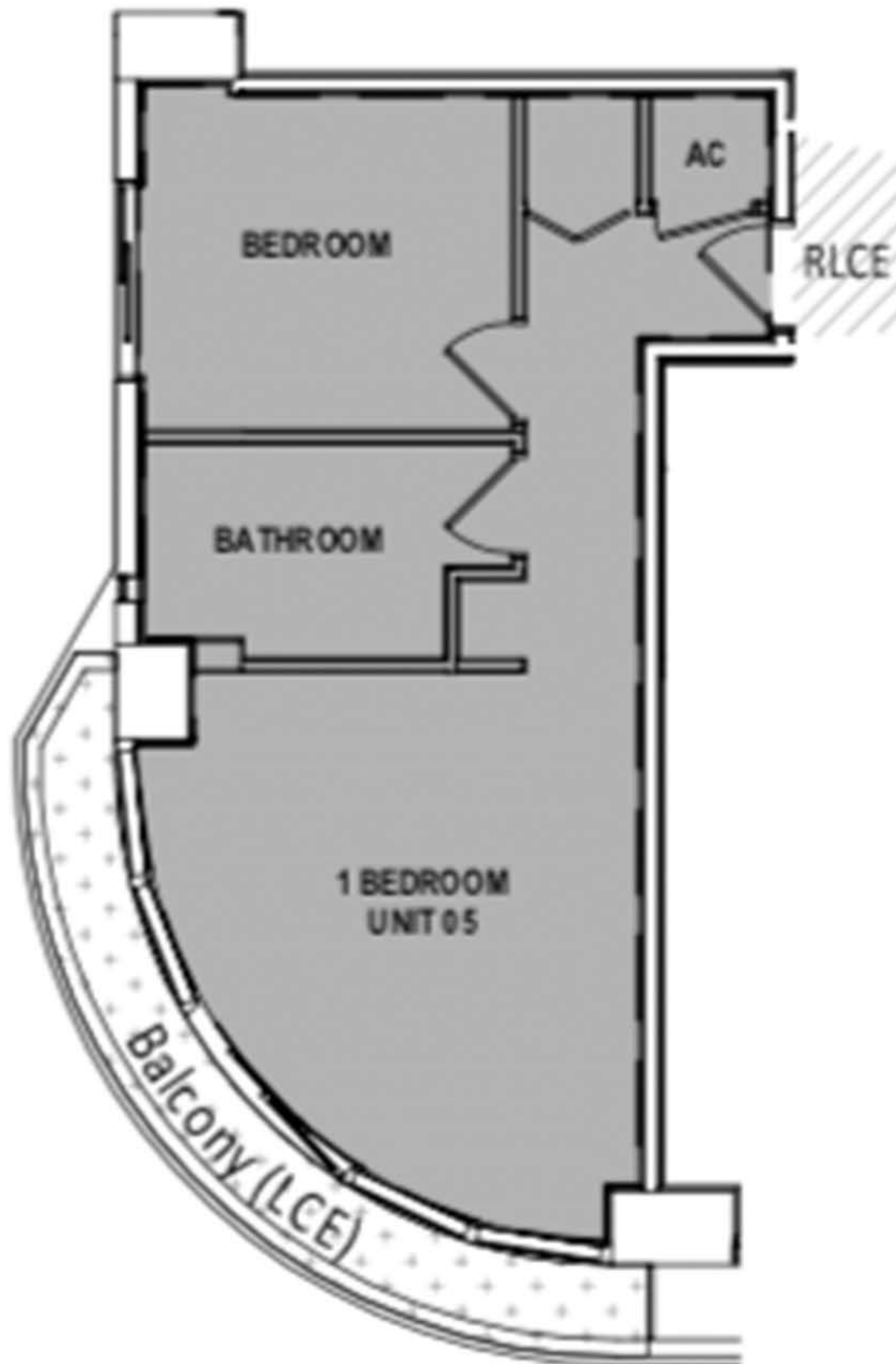
### UNIT 05

1 Bed / 1 Bath

Interior 551 sq. ft. | 51 m<sup>2</sup>

Exterior 138 sq. ft. | 13 m<sup>2</sup>

**Total 689 sq. ft. | 64 m<sup>2</sup>**



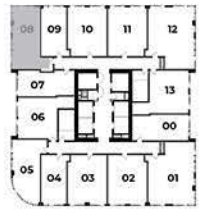
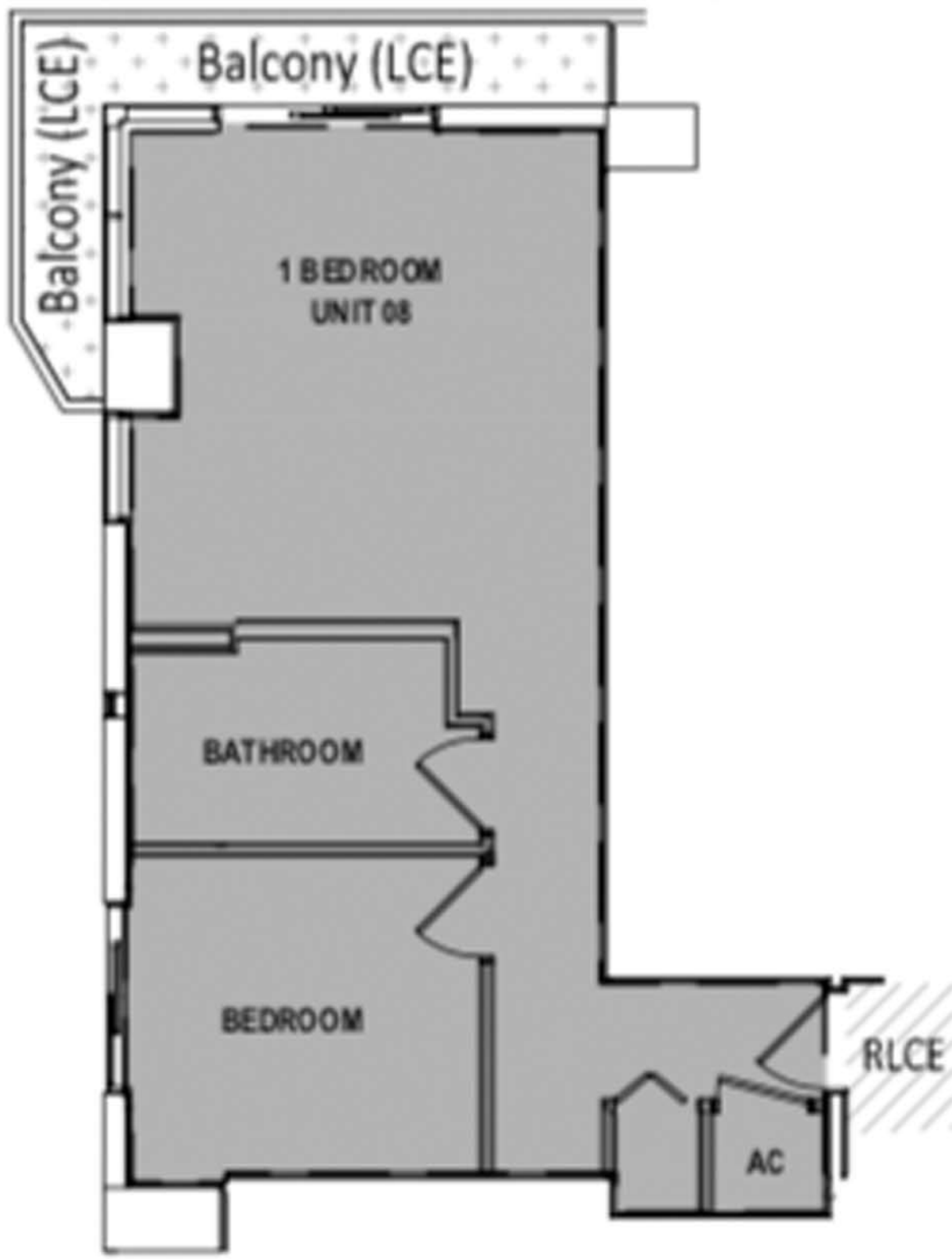
These drawings are conceptual only and are for the convenience of reference. They should not be relied upon as representations, express or implied, of the final detail of the residences. Units shown are examples of unit types and may not depict actual units. Stated square footages are ranges for a particular unit type and are measured to the exterior boundaries of the exterior walls and the centerline of interior demising walls and in fact vary from the area that would be determined by using the description and definition of the unit set forth in the declaration (which generally only includes the interior airspace between the perimeter walls and excludes interior structural components). Note that measurements of rooms set forth on this floorplan are generally taken at the greatest points of each given room (as if the room were a perfect rectangle), without regards for any cutouts. Accordingly, the area of the actual room will typically be smaller than the product obtained by multiplying the stated length times width. All dimensions are approximate and may vary with actual construction, and all floor plans and development plans are subject to change.



THE  
RESIDENCES

UNIT 08

1 Bed / 1 Bath  
 Interior 606 sq. ft. | 56 m2  
 Exterior 156 sq. ft. | 14 m2  
**Total 762 sq. ft. | 70 m2**



These drawings are conceptual only and are for the convenience of reference. They should not be relied upon as representations, express or implied, of the final detail of the residences. Units shown are examples of unit types and may not depict actual units. Stated square footages are ranges for a particular unit type and are measured to the exterior boundaries of the exterior walls and the centerline of interior demising walls and in fact vary from the area that would be determined by using the description and definition of the unit set forth in the declaration (which generally only includes the interior airspace between the perimeter walls and excludes interior structural components). Note that measurements of rooms set forth on this floorplan are generally taken at the greatest points of each given room (as if the room were a perfect rectangle), without regards for any cutouts. Accordingly, the area of the actual room will typically be smaller than the product obtained by multiplying the stated length times width. All dimensions are approximate and may vary with actual construction, and all floor plans and development plans are subject to change.

THE  
RESIDENCES

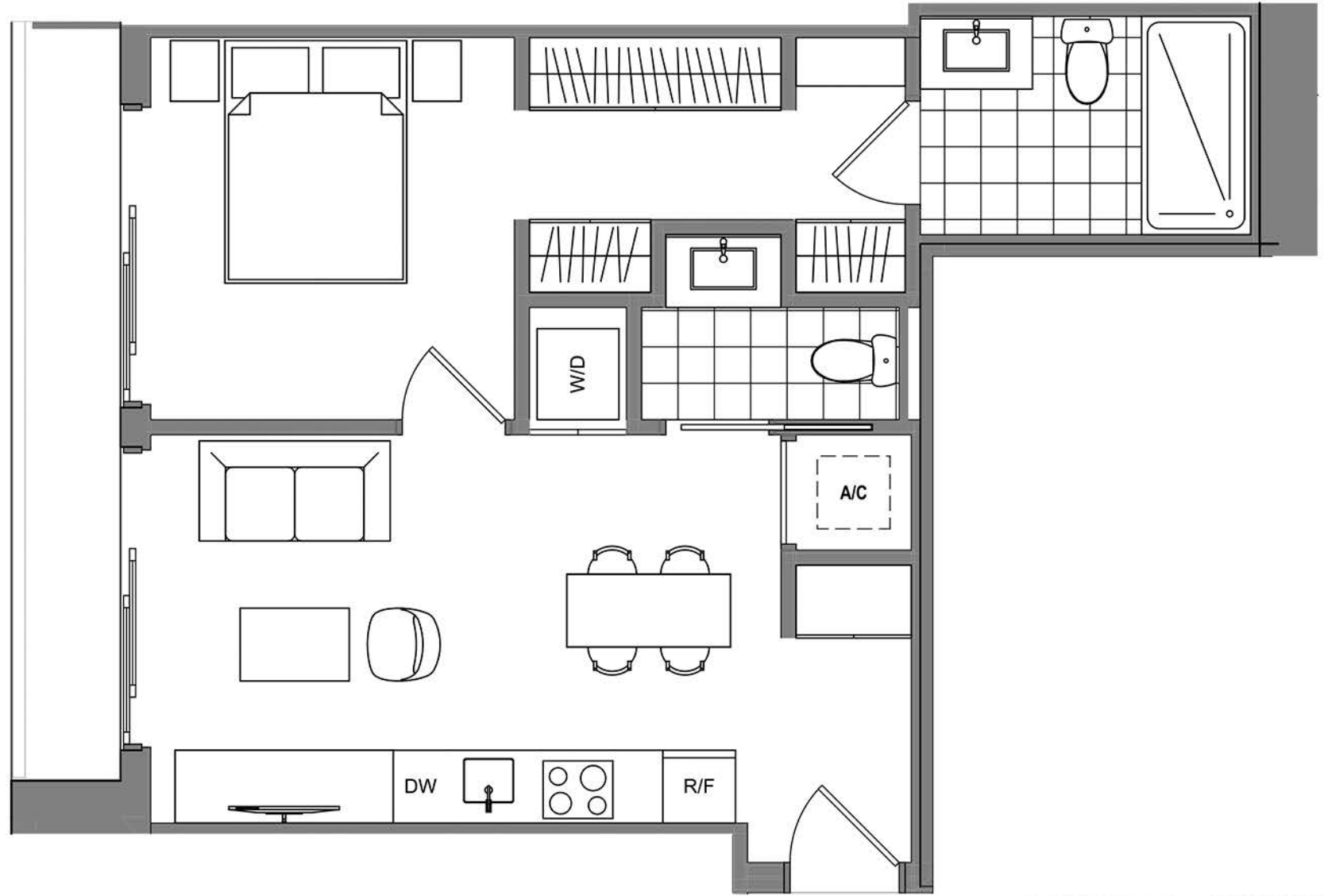
UNIT 06

1 Bed / 1.5 Bath

Interior 571 sq. ft. | 53 m<sup>2</sup>

Exterior 62 sq. ft. | 6 m<sup>2</sup>

**Total 633 sq. ft. | 59 m<sup>2</sup>**



These drawings are conceptual only and are for the convenience of reference. They should not be relied upon as representations, express or implied, of the final detail of the residences. Units shown are examples of unit types and may not depict actual units. Stated square footages are ranges for a particular unit type and are measured to the exterior boundaries of the exterior walls and the centerline of interior demising walls and in fact vary from the area that would be determined by using the description and definition of the unit set forth in the declaration (which generally only includes the interior airspace between the perimeter walls and excludes interior structural components). Note that measurements of rooms set forth on this floorplan are generally taken at the greatest points of each given room (as if the room were a perfect rectangle), without regards for any cutouts. Accordingly, the area of the actual room will typically be smaller than the product obtained by multiplying the stated length times width. All dimensions are approximate and may vary with actual construction, and all floor plans and development plans are subject to change.

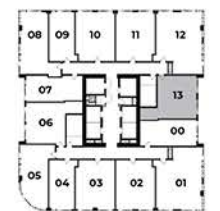
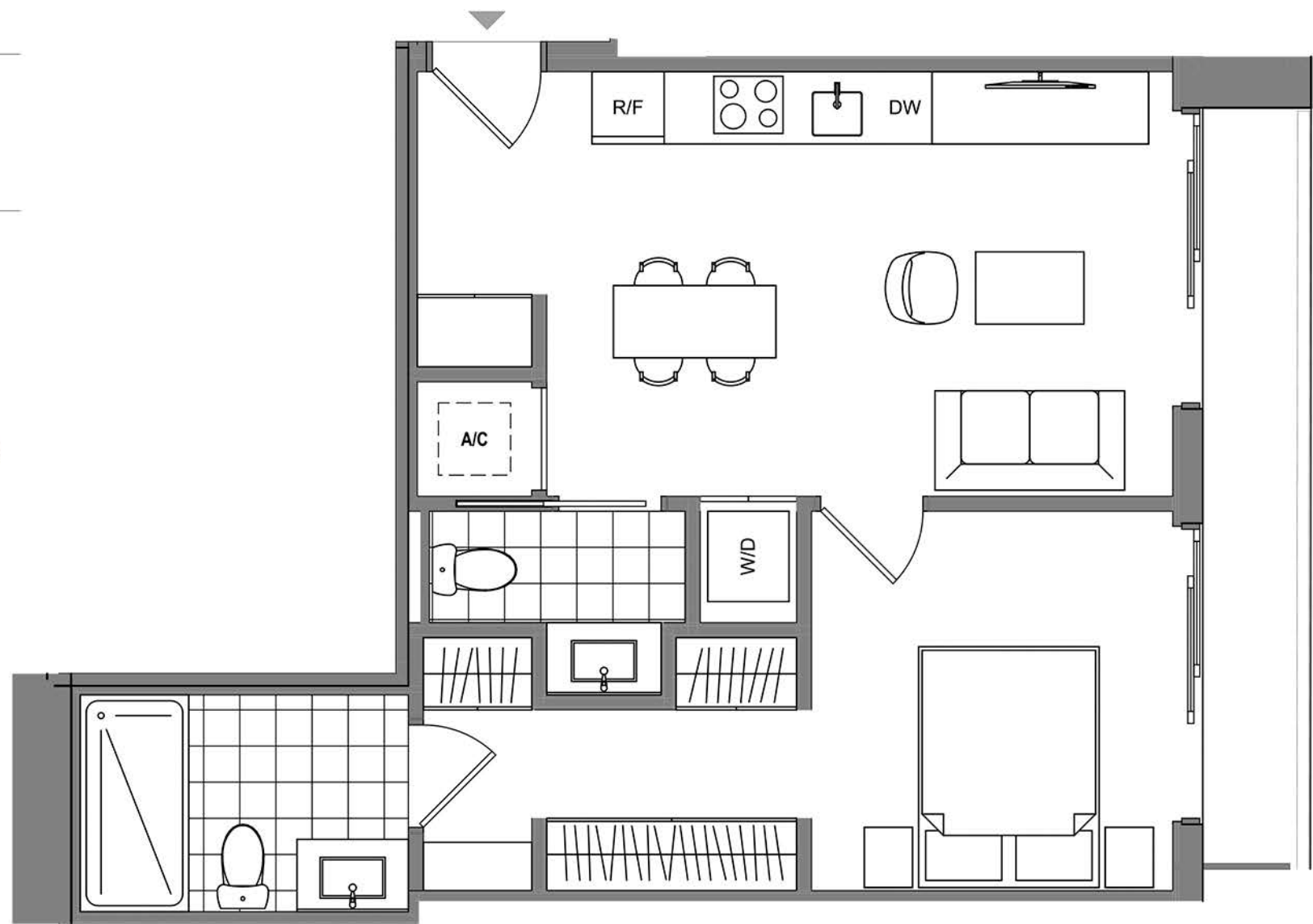


## THE RESIDENCES

### UNIT 13

1 Bed / 1.5 Bath

Interior 591 sq. ft. | 55 m<sup>2</sup>  
 Exterior 63 sq. ft. | 6 m<sup>2</sup>  
**Total 654 sq. ft. | 61 m<sup>2</sup>**



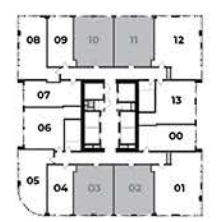
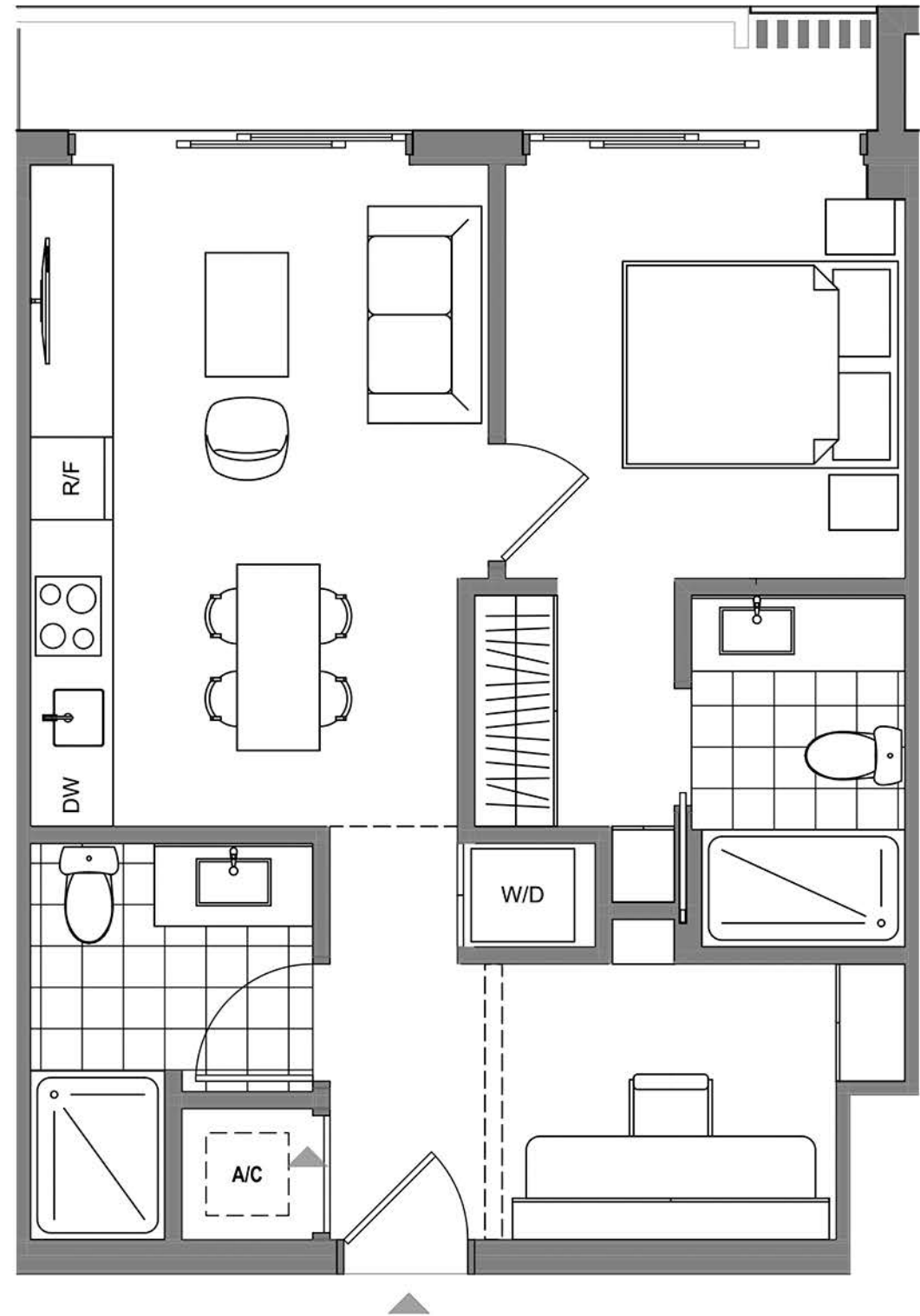
These drawings are conceptual only and are for the convenience of reference. They should not be relied upon as representations, express or implied, of the final detail of the residences. Units shown are examples of unit types and may not depict actual units. Stated square footages are ranges for a particular unit type and are measured to the exterior boundaries of the exterior walls and the centerline of interior demising walls and in fact vary from the area that would be determined by using the description and definition of the unit set forth in the declaration (which generally only includes the interior airspace between the perimeter walls and excludes interior structural components). Note that measurements of rooms set forth on this floorplan are generally taken at the greatest points of each given room (as if the room were a perfect rectangle), without regards for any cutouts. Accordingly, the area of the actual room will typically be smaller than the product obtained by multiplying the stated length times width. All dimensions are approximate and may vary with actual construction, and all floor plans and development plans are subject to change.

## THE RESIDENCES

### UNIT 02/03/10/11

1 Bed + Den / 2 Bath

Interior 597 sq. ft. | 55 m2  
 Exterior 62 sq. ft. | 6 m2  
**Total 659 sq. ft. | 61 m2**



These drawings are conceptual only and are for the convenience of reference. They should not be relied upon as representations, express or implied, of the final detail of the residences. Units shown are examples of unit types and may not depict actual units. Stated square footages are ranges for a particular unit type and are measured to the exterior boundaries of the exterior walls and the centerline of interior demising walls and in fact vary from the area that would be determined by using the description and definition of the unit set forth in the declaration (which generally only includes the interior airspace between the perimeter walls and excludes interior structural components). Note that measurements of rooms set forth on this floorplan are generally taken at the greatest points of each given room (as if the room were a perfect rectangle), without regards for any cutouts. Accordingly, the area of the actual room will typically be smaller than the product obtained by multiplying the stated length times width. All dimensions are approximate and may vary with actual construction, and all floor plans and development plans are subject to change.

# Levels 14 - 35 & 37

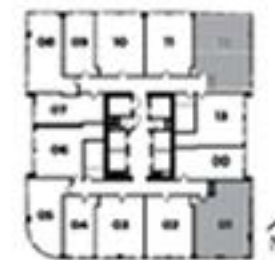
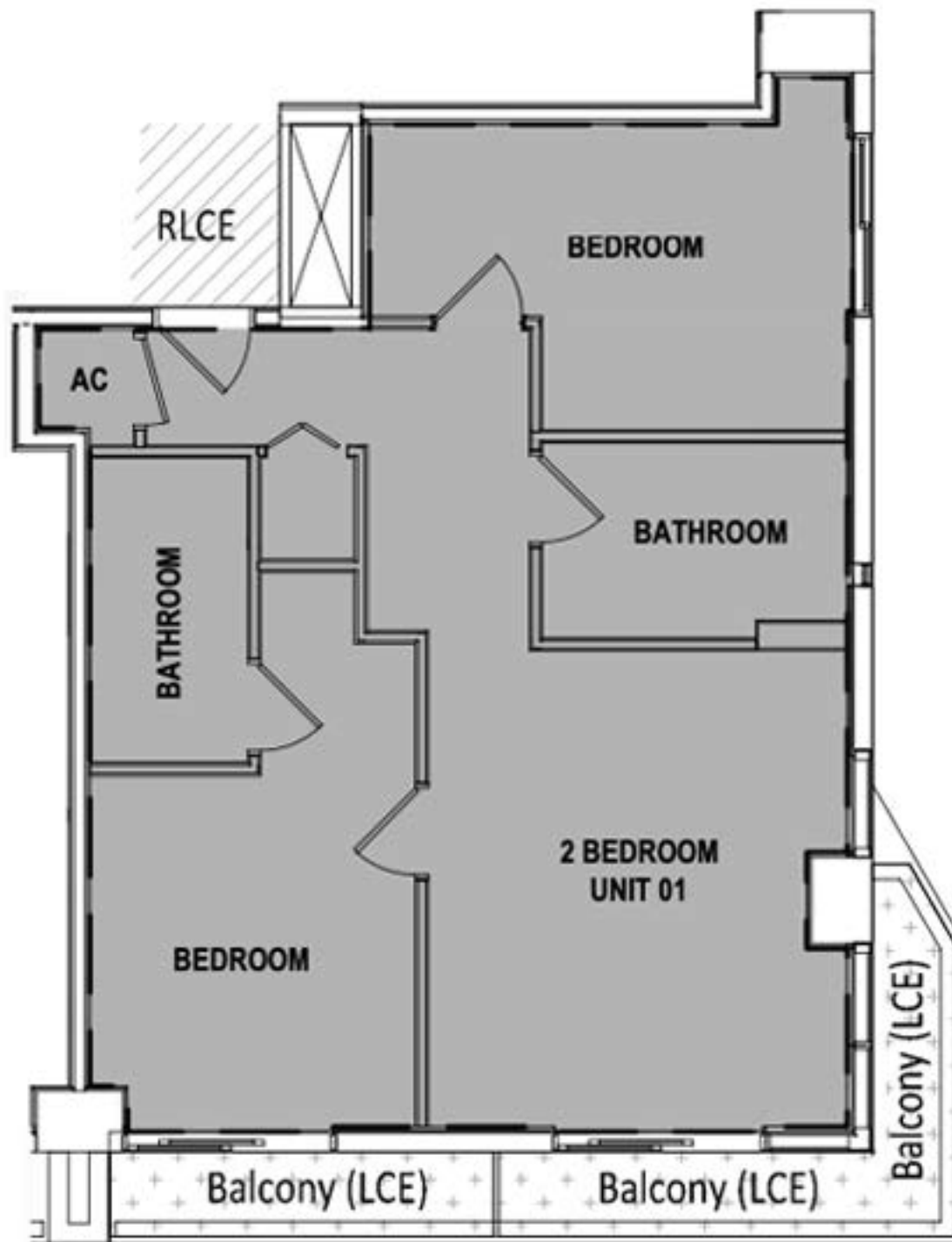
**501**  
FIRST  
RESIDENCES

THE  
RESIDENCES

UNIT 01/12

2 Bed / 2 Bath

Interior 835 sq. ft. | 78 m<sup>2</sup>  
Exterior 180 sq. ft. | 17 m<sup>2</sup>  
Total 1,015 sq. ft. | 95 m<sup>2</sup>



These drawings and descriptions are conceptual only and are for the convenience of reference and including other drawings. They should not be taken as representations, warranties or promises of the true nature of the residences or the construction. The developer reserves the right to make modifications, corrections and changes to these drawings in its sole and absolute discretion. All stated dimensions are approximate. All depictions of appliances, furniture, fixtures and other matters of detail including, without limitation, items of finish and decoration are conceptual only and are not necessarily included in the final unit. Stated dimensions are measured to the exterior face of the exterior walls and the centerline of interior opening walls and in feet and inches. The dimensions that should be determined by using the description and definition of the "net" area in the Declaration which generally only includes the interior spaces between the perimeter walls and excludes other structural components. Note that measurements of rooms are taken at the greatest points of each given room as if the room were a perfect rectangle without regard for any columns. Accordingly, the area of the actual room will generally be smaller than the amount obtained by multiplying the stated length times width. All dimensions are approximate and may vary with actual construction and all floor plans and development plans are subject to change.