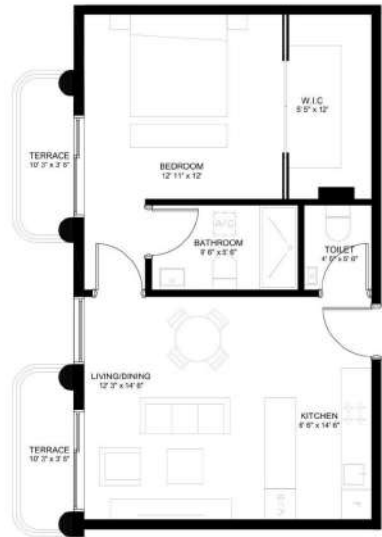


1 BEDROOM TYPE 01

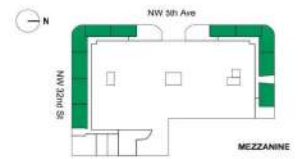
1 BR / 1B

INTERIOR	669 SF
TERRACE	72 SF
TOTAL	741 SF

The dimensions stated for this and floor plan are approximate dimensions based on various recognized methods for calculating the square footage of a unit. The square footage stated here is calculated from the exterior boundaries of the exterior walls to the centerline of those openings with vertical thresholds for doors, corridors or architectural features. This method typically results in a square dimension greater than the dimension that would be determined by using other recognized methods. The addition of "100" with the calculation method to the stated space is set forth by the CLONING GROUP, a Developer's proprietary and the method set forth in the Developer's prospectus may result in a square footage calculation less than the method used here. Consult the Developer's prospectus for information on what is allowed with this plan and the calculation of the unit square footage and dimensions.



exact facade and balcony layout refer to overall plans

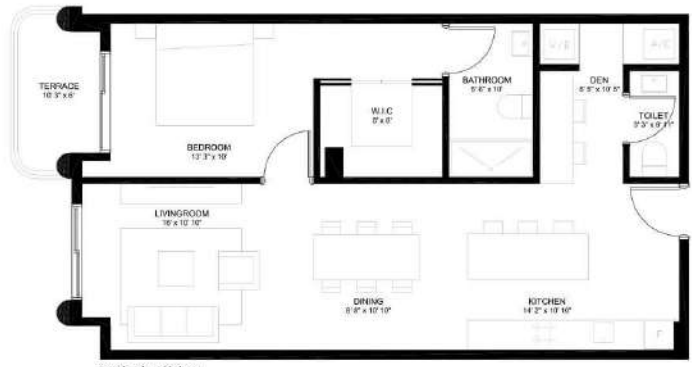


1 BEDROOM TYPE 02

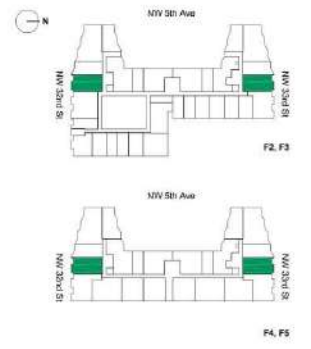
1 BR / 1.5 B / D

INTERIOR	853 SF
TERRACE	62 SF
TOTAL	915 SF

The necessary floor finish and floor plan are approved based on the actual engineering methods to calculate the square footage of a unit. The square footage stated here is calculated from the interior boundaries of the exterior walls to the centerline of major elements with without exceptions for alcoves, nooks, or architectural features. This method typically results in rounded dimensions in places that the construction documents are drawn to the centerline method. The addition of "half" and the calculation method to be used when it is not clear by the client/contractor, is developer's standard and the method for both in the developer's program may result in a square footage calculation that may be different from that calculated by the developer's program for the construction contract. Also, please refer to the calculation of total square footage and dimensions.



indicates balcony and hallway layout refer to overall plans

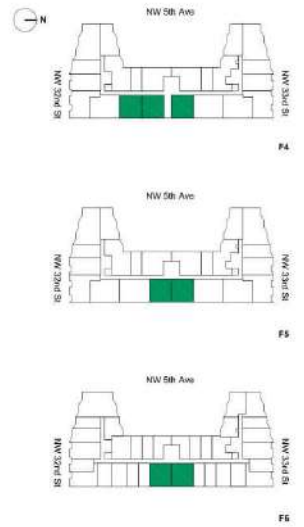
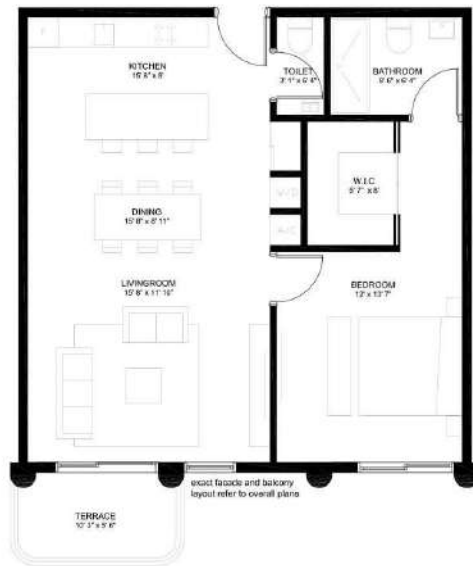


1 BEDROOM TYPE 03

1 BR / 1.5 B

INTERIOR 860 SF
TERRACE 57 SF
TOTAL 917 SF

The information shown for this unit type and associated associated floor and various integrated methods for calculating the square footage of a unit. The square footage information is provided from the exterior dimensions of the space with the exception of certain building code related deductions for columns, stairs, or architectural features. The method typically results in a total dimension greater than the dimensions that would be obtained by using other accepted methods. The addition of "GIP" and the applicable method to the total square foot data for the CLUSTER/ROW is Developer's preference and the method set forth in the Developer's prospectus may result in a square footage calculation that may be different from that shown. Contact the Developer's representative for information on what is offered with the Unit and the calculation of the Unit's square footage and dimensions.

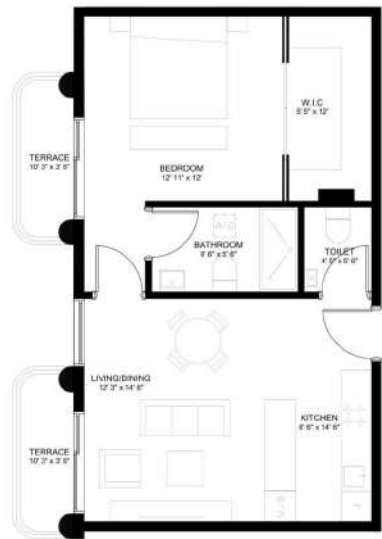
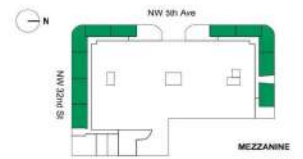


1 BEDROOM TYPE 01

1 BR / 1B

INTERIOR	669 SF
TERRACE	72 SF
TOTAL	741 SF

The dimensions stated for this and floor plan are approximate dimensions based on various recognized methods for calculating the square footage of a unit. The square footage stated here is calculated from the exterior boundaries of the exterior walls to the centerline of those openings with vertical thresholds for doors, corridors or architectural features. This method typically results in a square dimension greater than the dimension that would be determined by using other recognized methods. The addition of "1/2" and the calculation method to the stated space is set forth by the CLUSTERING GROUP, a Developer's proprietary and the method set forth in the Developer's prospectus may result in a square footage calculation less than the method used here. Consult the Developer's prospectus for information on what it differs with this plan and the calculation of the unit square footage and dimensions.



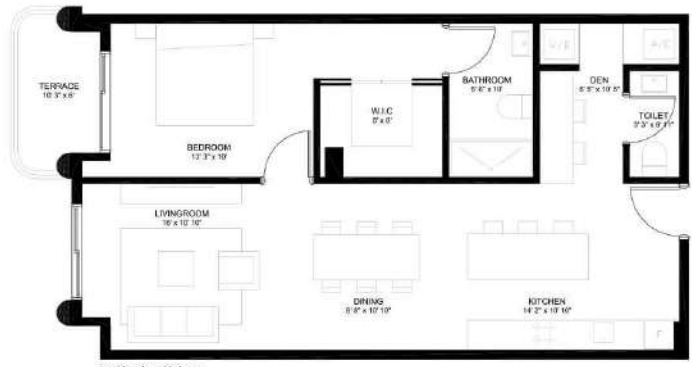
exact facade and balcony layout refer to overall plans

1 BEDROOM TYPE 02

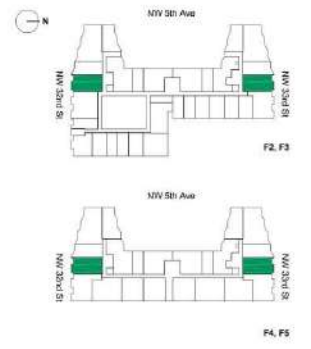
1 BR / 1.5 B / D

INTERIOR	853 SF
TERRACE	62 SF
TOTAL	915 SF

The necessary floor finish and floor plan are approved based on the actual engineering methods to calculate the square footage of a unit. The square footage stated here is calculated from the interior boundaries of the exterior walls to the centerline of major elements with without exceptions for columns, walls, or architectural features. This method typically results in rounded dimensions in inches that are rounded down to the nearest inch using their respective methods. The addition of "half" and the calculation method to be used when it is not clear by the client/contractor, is developer's standard and the method for both in the developer's program may result in a square footage calculation that may be different from that calculated by the developer's program for the client/contractor. It is the responsibility of the client/contractor to verify the square footage and dimensions.



*exact brockle and balcony layout refer to overall plans

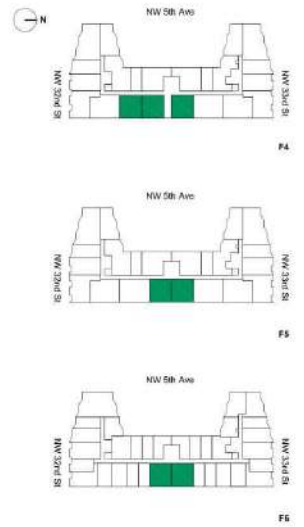
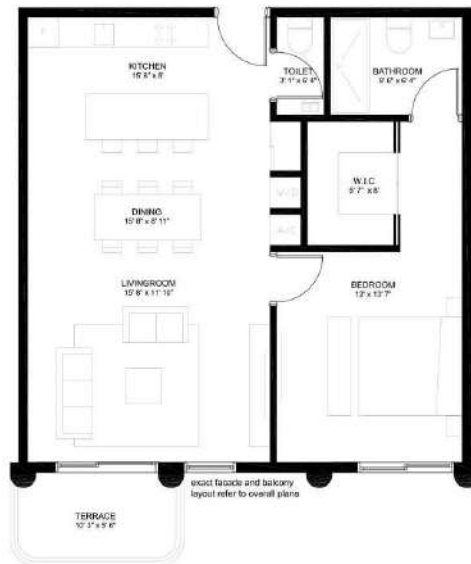


1 BEDROOM TYPE 03

1 BR / 1.5 B

INTERIOR 860 SF
TERRACE 57 SF
TOTAL 917 SF

The information shown for this unit type and associated associated items are based on typical methods for calculating the square footage of a unit. The square footage information is provided for the exterior dimensions of the unit and is the exclusive of common hallway walls, shared walls, or structural elements. The information is provided for informational purposes only and is not intended to be used for construction or other purposes. The addition of "GIP" and the applicable methods for the unit type is not applicable to this unit type. The information is provided for informational purposes only and is not intended to be used for construction or other purposes. Consult the Developer's presentation for information on what is offered with the Unit and the location of the Unit within the project and its surroundings.

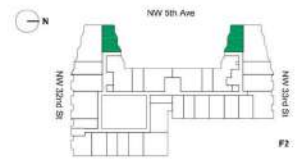
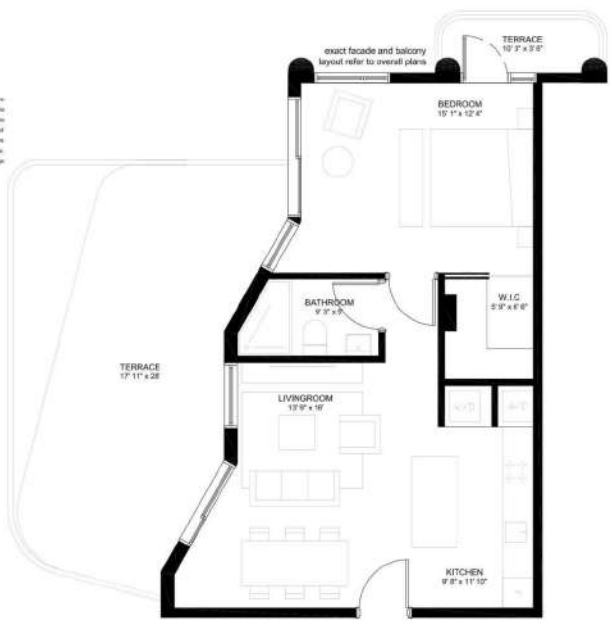


1 BEDROOM TYPE 06

1 BR / 1 B

INTERIOR 696 SF
TERRACE 416 SF
TOTAL 1,112 SF

The information stated for this unit and other plan and specification documents herein are neither copyrighted methods for calculating the square footage of a unit. The square footage stated here is calculated from the interior boundaries of the exterior walls to the centerline of interior openings with vertical projections for columns, corners, or architectural features. This method typically results in a calculated dimension greater than the dimension that would be determined by using other measurement methods. The inclusion of "W.C." with the calculation method to be used upon to set forth by the CLOSING/AGENCY, is Developer's practice and the method set forth in the Developer's prospectus may result in a square footage calculation less than the method used here. Consult the Developer's prospectus for information on what to observe with the unit and the calculation of this unit square footage and dimensions.

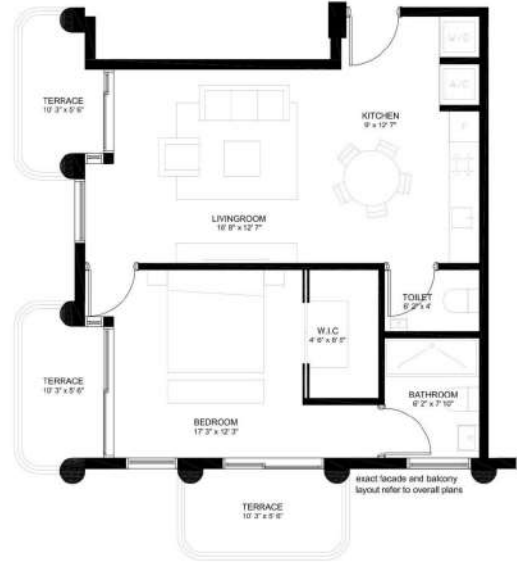
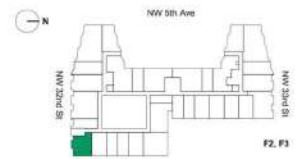


1 BEDROOM TYPE 07

1 BR / 1.5 B

INTERIOR	693 SF
TERRACE	171 SF
TOTAL	864 SF

The dimensions stated for this unit are for informational purposes only and do not constitute a contract. The square footage stated here is calculated from the interior boundaries of the unit walls to the centerline of interior openings with vertical dimensions for columns, corners, or architectural features. This method typically results in a square dimension greater than the dimensions that would be determined by using other measurement methods. The addition of "0.01" and the calculation method to be used upon to set forth the CLOSING/GRANDFURTHER, is Developer's practice and the method set forth in the Developer's prospectus may result in a square footage calculation less than the method used here. Consult the Developer's prospectus for information on what to allow with the unit and the calculation of this unit square footage and dimensions.



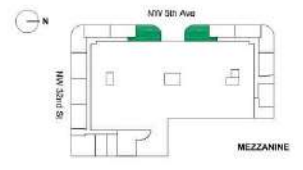
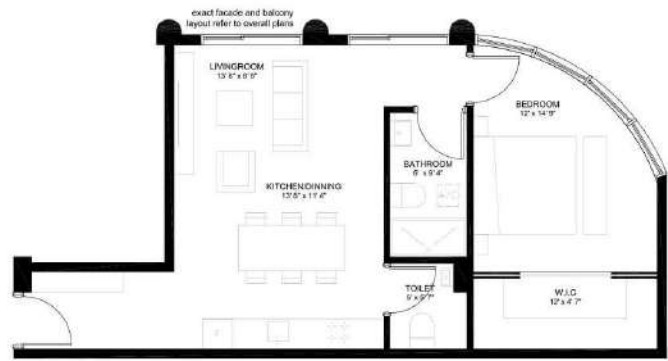
1 BEDROOM TYPE 08

1 BR / 1.5 B

INTERIOR 695 SF

TOTAL 695 SF

The necessary detail for this and floor plan are approximated calculated from the actual measured methods for calculating the square footage of a unit. The square footage stated here is calculated from the exterior boundaries of the exterior walls to the centerline of every opening with the exception of stairs, ramps, or protrusions. This method typically results in a square footage of a unit that is approximately 4% greater than the actual measured square footage. The definition of "unit" and the calculation method to be used upon is set forth by the CLINCHFIELD/CLC in Developer's prospectus and the method set forth in the Developer's prospectus may result in a square footage calculation less than the actual unit measurement. Developer's prospectus is provided for information only and does not constitute an offer and the calculation of total area is based on the actual measured methods.

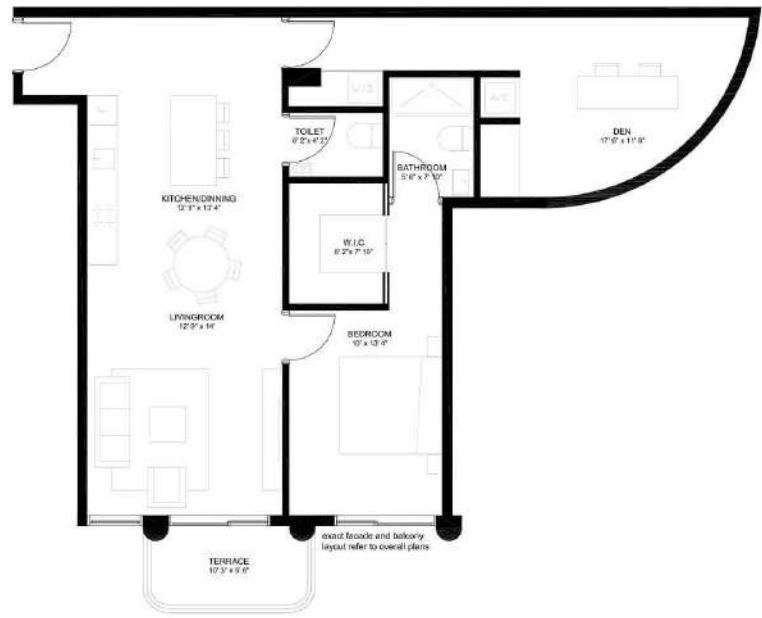
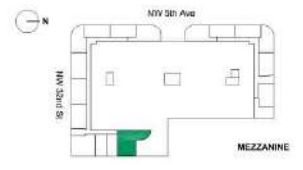


1 BEDROOM TYPE 9

1 BR / 1.5 B / D

INTERIOR	1,001 SF
TERRACE	57 SF
TOTAL	1,001 SF

The necessary detail for this and floor plan are approximated calculated from the actual measured methods to calculate the square footage of a unit. The square footage stated here is calculated from the exterior boundaries of the exterior walls to the perimeter of every opening with or without enclosure for entry, doors, or protrusions. This method typically results in square footage a greater than the dimensions that would be calculated by using other measuring methods. The inclusion of "Total" and the calculation method to be used upon is set forth by the CLINCHFIELD/CLINCHFIELD'S DEVELOPER'S AGREEMENT and the standard set forth in the Developer's program may result in a square footage calculation less than the method used here. Consult the developer's program for information on what is allowed upon the plan and the calculation of total square footage and amenities.

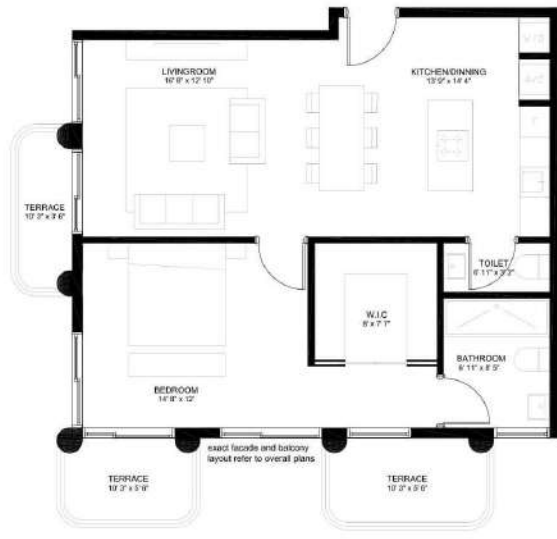


1 BEDROOM TYPE 10

1 BR / 1.5 B

INTERIOR 845 SF
TERRACE 150 SF
TOTAL 995 SF

The dimensions stated for this unit are approximate because these are subject to change without notice. In calculating the square footage of a unit, the square footage of the area of the unit is calculated from the interior boundaries of the unit. The area of a unit is not to be construed as a guarantee of the actual square footage of the unit. The actual square footage of a unit may vary from the square footage of the unit as shown on the floor plan. The actual square footage of a unit may vary from the square footage of the unit as shown on the floor plan. The actual square footage of a unit may vary from the square footage of the unit as shown on the floor plan.

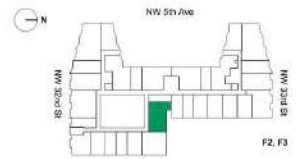
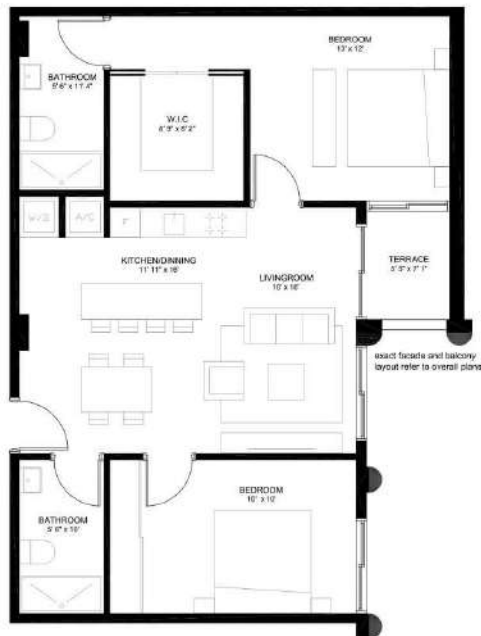


2 BEDROOM TYPE 06

2 BR / 2 B

INTERIOR 983 SF
TERRACE 39 SF
TOTAL 1,022 SF

The dimensions shown for this and floor plan are approximate because they are derived using standard methods for calculating the square footage of a unit. The square footage method used is calculated from the exterior dimensions of the exterior walls to the completion of all doors, windows, utility enclosures, balconies, terraces, or other exterior features. This method typically results in a square footage amount that is slightly higher than the actual square footage of the unit. The actual square footage of the unit will vary from the Developer's representation and may vary from the actual square footage of the unit. The actual square footage of the unit will vary from the actual square footage of the unit. Consult the Developer's representative for information on what method will be used for the calculation of the unit's square footage and dimensions.

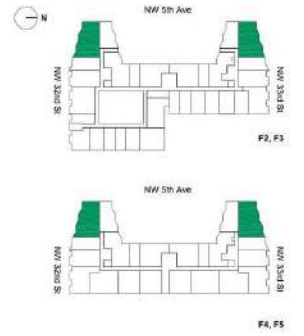
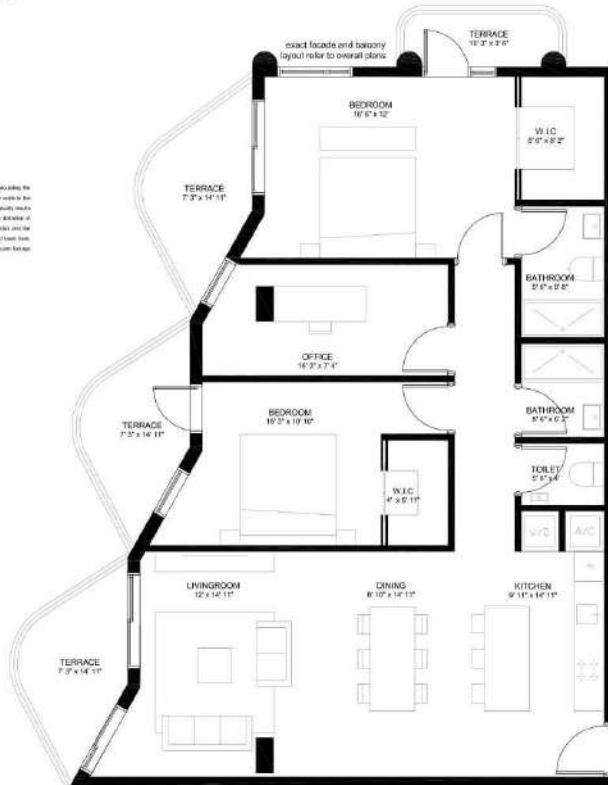


3 BEDROOM TYPE 01

3 BR / 2.5 B

INTERIOR 1,346 SF
TERRACE 233 SF
TOTAL 1,579 SF

The dimensions shown for this plan are approximate because there are various conceptual methods for calculating the square footage of a unit. The square footage shown is calculated from the exterior boundaries of the interior walls in accordance with current building code. It does not include the area of balconies, terraces, or other exterior features. This unit is typically used as a rental property and is not intended for use as a residence. The inclusion of "rent" and other information should not be taken as an offer to sell. The information is for informational purposes only and should not be used as a basis for any investment decision. A sales brochure is available from the project website. Consult the Developer's prospectus for information on how to contact the L&L and the location of the first open house and showings.

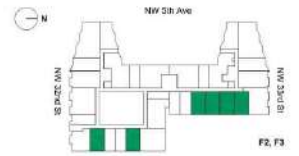


STUDIO TYPE 02

ST / 1 B

INTERIOR	573 SF
TERRACE	57 SF
TOTAL	630 SF

The information stated for this and other projects is prepared based on the various recognized methods for calculating the square footage of a unit. The square footage stated here is calculated from the exterior boundaries of the unit and includes the perimeter of a unit's exterior walls with all deductions for outside corners, or overhangs and features. This method typically results in a square footage greater than the dimensions that would be determined by using other accepted methods. The addition of "S.F." and the calculation method to be used shall be the responsibility of the DEVELOPER/OWNER. It is the responsibility of the DEVELOPER/OWNER to verify the information and the method set forth in this document's computation may result in a square footage calculation that is not the method used in the Developer's program. An illustration is provided to assist with the use and the calculation of the total square footage and dimensions.



THE RESIDENCES

STUDIO TYPE 04

ST / 1.5 B

INTERIOR 645 SF
TERRACE 64 SF
TOTAL 709 SF

The dimensions shown on this and floor plan are approximate dimensions based on standard measurement methods for calculating the square footage of a unit. The square footage shown here is calculated from the exterior dimensions of the exterior walls to the centerline of interior openings with additional adjustments for closets, terraces, or outdoor balconies. This method typically results in square footage that is slightly greater than the actual square footage of the unit. The actual square footage of the unit may vary slightly from the dimensions shown on this plan. The actual square footage of the unit may vary slightly from the dimensions shown on this plan. The actual square footage of the unit may vary slightly from the dimensions shown on this plan.

