



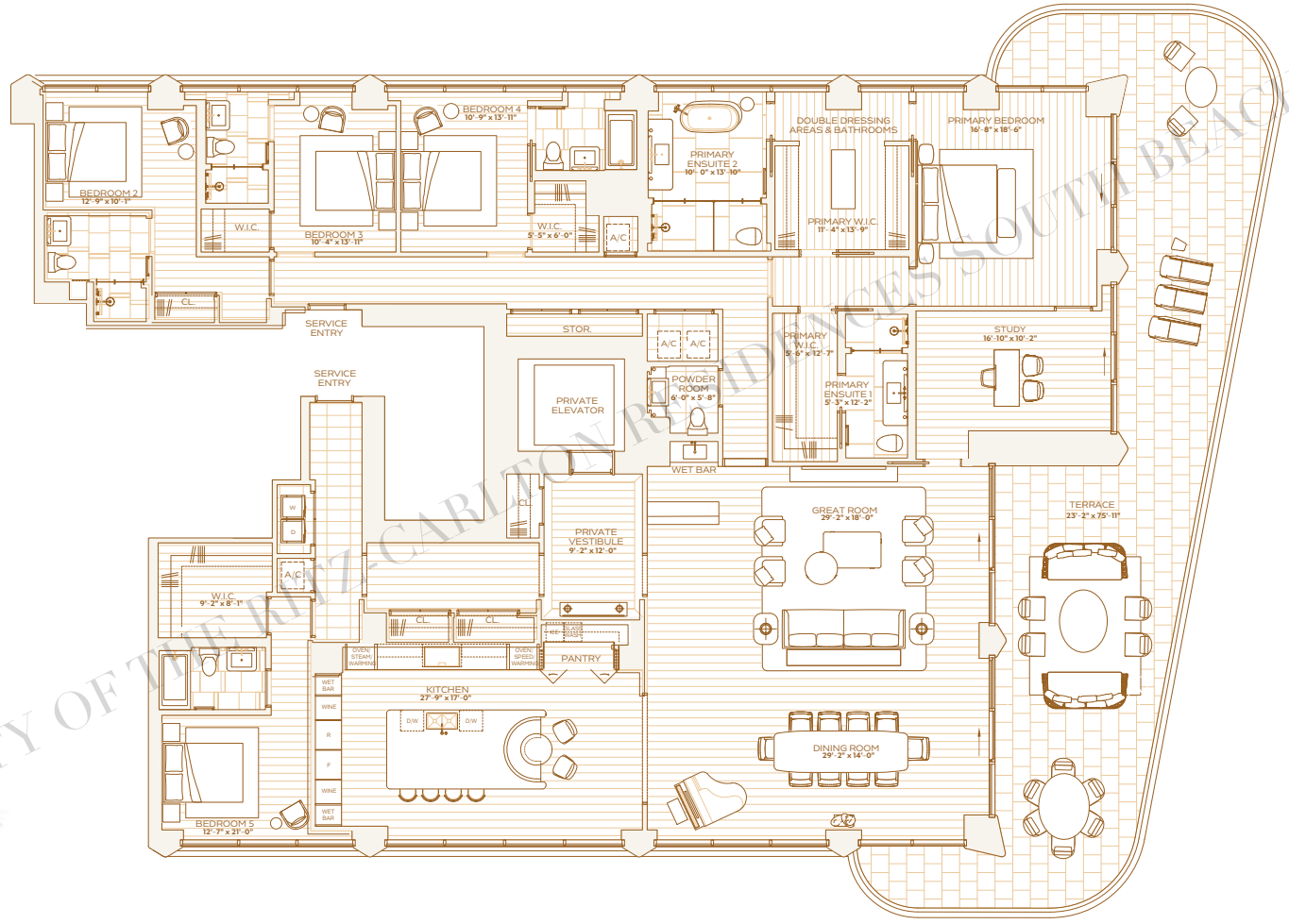
RESIDENCE A LEVEL 11 & 12

FIVE BEDROOMS
SIX BATHROOMS
POWDER ROOM

INTERIOR
4,481 SQ. FT / 416 SQ. M

EXTERIOR
1,040 SQ. FT / 97 SQ. M

TOTAL
5,521 SQ. FT / 513 SQ. M



OCEAN



THE RITZ-CARLTON RESIDENCES SOUTH BEACH ARE NOT OWNED, DEVELOPED OR SOLD BY THE RITZ-CARLTON HOTEL COMPANY LLC OR ITS AFFILIATES ("RITZ-CARLTON"). SOME SKY DEVELOPMENT, LLC IS THE RITZ-CARLTON MARKS & TRADE LICENSEE FROM RITZ-CARLTON, WHO HAS NOT CONFIRMED THE ACCURACY OF ANY OF THE STATEMENTS OR REPRESENTATIONS MADE HEREIN. STATED INTERIOR SQUARE FOOTAGE IS MEASURED TO THE EXTERIOR FACE OF EXTERIOR WALLS AND TO THE CENTERLINE OF INTERIOR DIVIDING WALLS OR TO THE EXTERIOR FACE OF WALLS ADJOINING CORRIDORS OR OTHER COMMON ELEMENTS OR SHARED FACILITIES WITHOUT EXCLUDING AREAS THAT MAY BE OCCUPIED BY COLUMNS OR OTHER STRUCTURAL COMPONENTS. THE METHOD OF MEASUREMENT (AREA) IS GREATER THAN THE DIMENSIONS THAT WOULD BE DETERMINED BY USING THE DESCRIPTION AND THE DIMENSIONS OF THE UNIT SET FORTH IN THE DECLARATION, WHICH IS GENERALLY ONLY INCLUSIVE OF THE INTERIOR WALLS AND EXCLUSIVE OF STRUCTURAL COMPONENTS. THE AREA OF THE UNIT DETERMINED IN ACCORDANCE WITH THE UNIT DIMENSIONS SET FORTH IN EXHIBIT 5 TO THE DECLARATION, ALL DIMENSIONS ARE APPROXIMATE AND MAY VARY WITH ACTUAL CONSTRUCTION. NOTE THAT MEASUREMENTS OF ROOMS SET FORTH ON THE FLOOR PLAN ARE GENERALLY TAKEN AT THE GREATEST POINTS OF EACH ROOM. ROOMS ARE NOT PERFECT RECTANGLES WITHOUT REGARD FOR ANY CURVED OR IRREGULARITIES. ACCORDINGLY, THE AREA OF THE ACTUAL ROOM WILL TYPICALLY BE SMALLER THAN THE PRODUCT OBTAINED BY ALL DIMENSIONS SET FORTH IN THIS FLOOR PLAN. AREAS ARE SUBJECT TO CHANGE. THE DELEGATED DESIGNER HAS THE RIGHT TO MAKE MODIFICATIONS, REVISIONS, AND CHANGES IN ITS SOLE AND ABSOLUTE DISCRETION. ALL DEPICTIONS OF FIXTURES, APPLIANCES, BUILT-IN COUNTERTOPS, SOFFITS, FLOORCOVERINGS, LIGHTING, LANDSCAPING AND OTHER MATTERS OF DETAIL, INCLUDING, WITHOUT LIMITATION, ITEMS OF FINISH AND DECORATION, ARE CONCEPTUAL ONLY AND ARE NOT NECESSARILY INCLUDED IN EACH UNIT. CONSULT YOUR PROSPECTUS AND PURCHASE AGREEMENT.



THE RITZ-CARLTON RESIDENCES
SOUTH BEACH

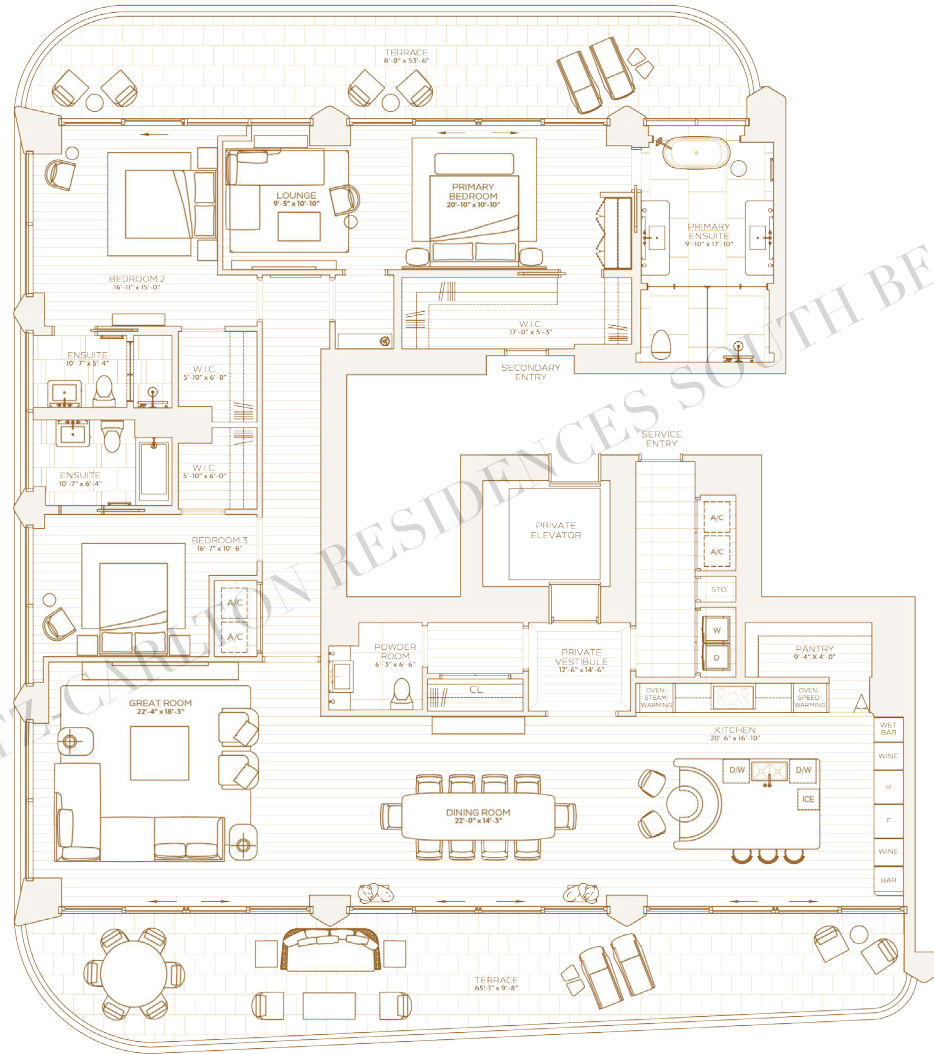
RESIDENCE B LEVEL 11 & 12

THREE BEDROOMS
THREE BATHROOMS
POWDER ROOM

INTERIOR
2,991 SQ. FT. / 278 SQ. M

EXTERIOR
912 SQ. FT. / 85 SQ. M

TOTAL
3,903 SQ. FT. / 363 SQ. M



OCEAN



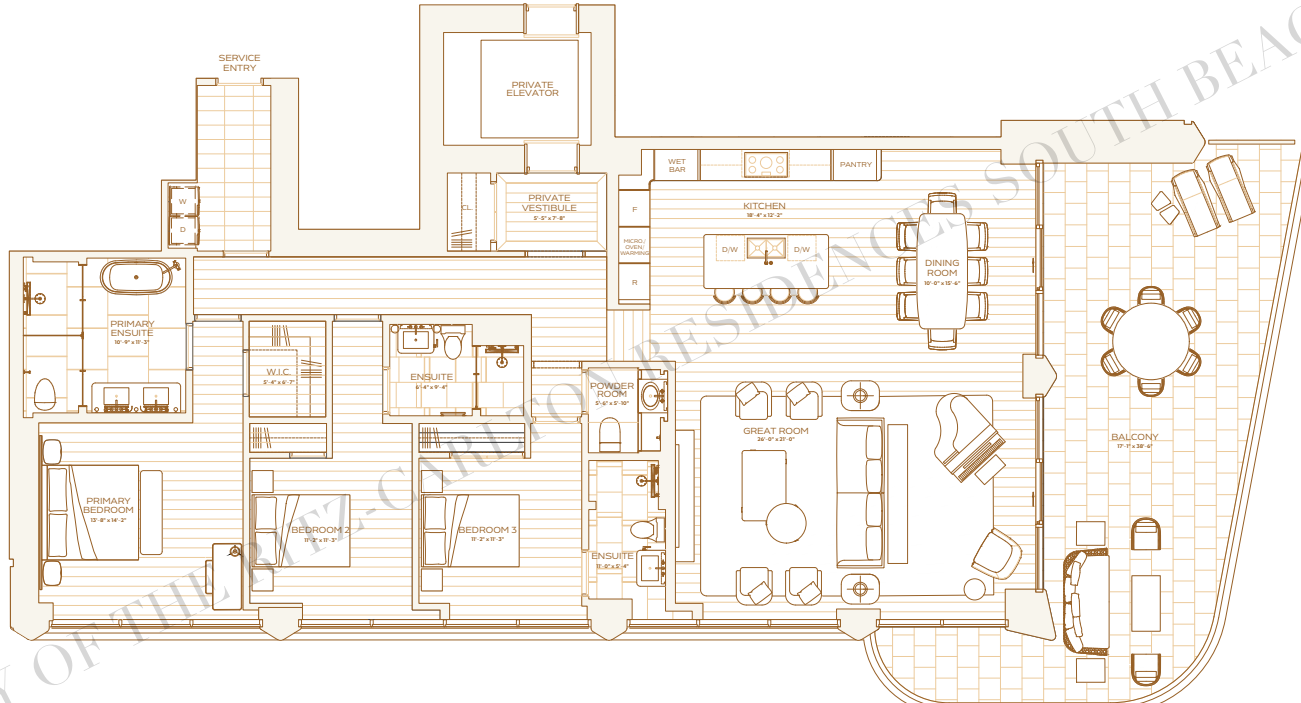
RESIDENCE B LEVEL 9 & 10

THREE BEDROOMS
THREE BATHROOMS
POWDER ROOM

INTERIOR
2,247 SQ. FT / 209 SQ. M

EXTERIOR
591 SQ. FT / 55 SQ. M

TOTAL
2,838 SQ. FT / 264 SQ. M



OCEAN

THE RITZ-CARLTON RESIDENCES SOUTH BEACH ARE NOT OWNED, DEVELOPED OR SOLD BY THE RITZ-CARLTON HOTEL COMPANY LLC OR ITS AFFILIATES ("RITZ-CARLTON"). SOME BY DEVELOPMENT LLC USES THE RITZ-CARLTON MARKS UNDER LICENSE FROM RITZ-CARLTON, WHO HAS NOT CONFIRMED THE ACCURACY OF ANY OF THE STATEMENTS OR REPRESENTATIONS MADE HEREIN. STATION INTERIOR SQUARE FOOTAGE IS MEASURED TO THE EXTERIOR FACE OF EXTERIOR WALLS AND TO THE CENTERLINE OF INTERIOR PARTITION WALLS (OR TO THE EXTERIOR FACE OF WALLS ADJOINING CORRIDORS OR OTHER COMMON ELEMENTS) OR SHARED FACILITIES WITHOUT EXCLUDING AREAS THAT MAY BE OCCUPIED BY COLUMNS OR OTHER STRUCTURAL COMPONENTS. THE METHOD OF MEASUREMENT (AREAS LARGER THAN THE DIMENSIONS THAT WOULD BE DETERMINED BY USING THE DIMENSIONS AND THE CENTERLINE OF THE UNIT SET FORTH IN THE DECLARATION, WHICH IS GENERALLY ONLY IN WALLS) INCLUDES THE AREA BETWEEN THE EXTERIOR WALLS AND EXTERIOR STRUCTURAL COMPONENTS FOR REFERENCE. THE AREA OF THE UNIT IS DETERMINED IN ACCORDANCE WITH THE UNIT BOUNDARIES SET FORTH IN THE DECLARATION IN EXHIBIT 5. TO THE DECLARATION. ALL DIMENSIONS ARE APPROXIMATE AND MAY VARY WITH ACTUAL CONSTRUCTION. NOTE THAT MEASUREMENTS OF ROOMS SET FORTH ON THE FLOOR PLAN ARE GENERALLY TAKEN AT THE GREATEST POINTS OF EACH ROOM. ROOMS ARE SHOWN HEREIN AS PERFECT RECTANGLES WITHOUT REGARD FOR ANY CURVED OR IRREGULARITIES. ACCORDINGLY, THE AREA OF THE ACTUAL ROOM WILL TYPICALLY BE SMALLER THAN THE PRODUCT OBTAINED BY MULTIPLYING THE STATED LENGTH TIMES THE STATED WIDTH. ALL FLOOR PLAN AND DEVELOPMENT PLANS ARE SUBJECT TO CHANGE. THE DEVELOPER PRESERVES THE RIGHT TO MAKE MODIFICATIONS, REVISIONS, AND CHANGES IN ITS SOLE AND ABSOLUTE DISCRETION. ALL DEPICTIONS OF FIXTURES, FINISHES, APPLIANCES, BUILT-IN COUNTERTOPS, SOFFITS, FLOORCOVERINGS, LIGHTING, LANDSCAPING AND OTHER MATTERS OF DETAIL, INCLUDING, WITHOUT LIMITATION, ITEMS OF FINISH AND DECORATION, ARE CONCEPTUAL ONLY AND ARE NOT NECESSARILY INCLUDED IN EACH UNIT. CONSULT YOUR PROSPECTUS AND PURCHASE AGREEMENT.



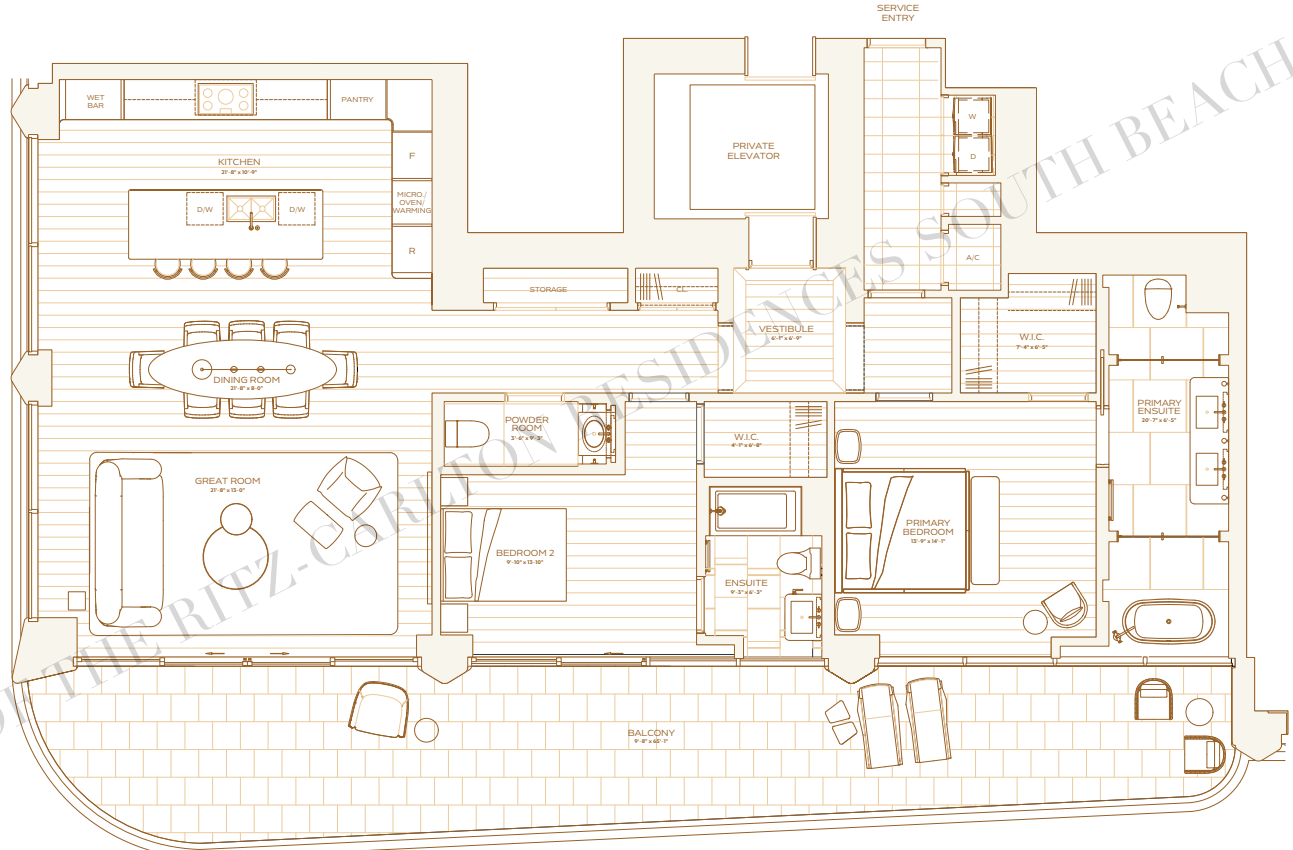
RESIDENCE C LEVEL 9 & 10

TWO BEDROOMS
TWO BATHROOMS
POWDER ROOM

INTERIOR
1,781 SQ. FT / 165 SQ. M

EXTERIOR
527 SQ. FT / 49 SQ. M

TOTAL
2,308 SQ. FT / 214 SQ. M



OCEAN



THE RITZ-CARLTON RESIDENCES SOUTH BEACH ARE NOT OWNED, DEVELOPED OR SOLD BY THE RITZ-CARLTON HOTEL COMPANY, LLC OR ITS AFFILIATES ("RITZ-CARLTON"). SOME SKY DEVELOPMENT, LLC IS THE RITZ-CARLTON MARKS LICENSEE FROM RITZ-CARLTON, WHO HAS NOT CONFIRMED THE ACCURACY OF ANY OF THE STATEMENTS OR REPRESENTATIONS MADE HEREIN. STATISTICAL INTERIOR SQUARE FOOTAGE IS MEASURED TO THE EXTERIOR FACE OF INTERIOR WALLS AND TO THE CENTERLINE OF INTERIOR DIVIDING WALLS (SIC) TO THE EXTERIOR FACE OF WALLS ADJOINING CORRIDORS OR OTHER COMMON ELEMENTS OR SHARED FACILITIES WITHOUT EXCLUDING AREAS THAT MAY BE OCCUPIED BY COLUMN OR OTHER STRUCTURAL COMPONENTS. THEREIN, KIND OF MEASUREMENT (AREAS GREATER AND SMALLER THAN THE DIMENSIONS THAT WOULD BE DETERMINED BY LONG) IS DESCRIBED AND THE CENTERLINE OF THE UNIT SET FORTH IN THE DECLARATION, WHICH IS GENERALLY ONLY INCLUSIVE OF THE INTERIOR FINISHES BETWEEN THE INTERIOR WALLS AND EXTERIOR WALLS. THE AREA OF THE UNIT DETERMINED BY ACCORDANCE WITH THE UNIT BOUNDARIES SET FORTH IN THE DECLARATION IS SET FORTH IN EXHIBIT "F". TO THE EXTENT ALL DIMENSIONS ARE APPROXIMATE AND MAY VARY WITH ACTUAL CONSTRUCTION. NOTE THAT MEASUREMENTS OF ROOMS SET FORTH ON THE FLOOR PLAN ARE GENERALLY TAKEN AT THE GREATEST POINTS OF EACH ROOM. ROOMS ARE NOT NECESSARILY RECTANGULAR WITHOUT RESPECT TO ANY CLOSET OR BUILT-IN PARTS. ACCORDINGLY, THE AREA OF THE ACTUAL ROOM WILL TYPICALLY BE SMALLER THAN THE PRODUCT OBTAINED BY MULTIPLYING THE SET FORTH DIMENSIONS WITH ALL FLOOR PLAN AREAS ARE SUBJECT TO CHANGE. THE DEVELOPER PRESERVES THE RIGHT TO MAKE MODIFICATIONS, REVISIONS, AND CHANGES IN ITS SOLE AND ABSOLUTE DISCRETION. ALL DEPICTIONS OF FIXTURES, APPLIANCES, BUILT-IN, COUNTERTOPS, SOFFITS, FLOORCOVERINGS, LIGHTING, LANDSCAPING AND OTHER MATTERS OF DETAIL, INCLUDING, WITHOUT LIMITATION, ITEMS OF FINISH AND DECORATION, ARE CONCEPTUAL ONLY AND ARE NOT NECESSARILY INCLUDED IN EACH UNIT. CONSULT YOUR PROSPECTUS AND PURCHASE AGREEMENT.



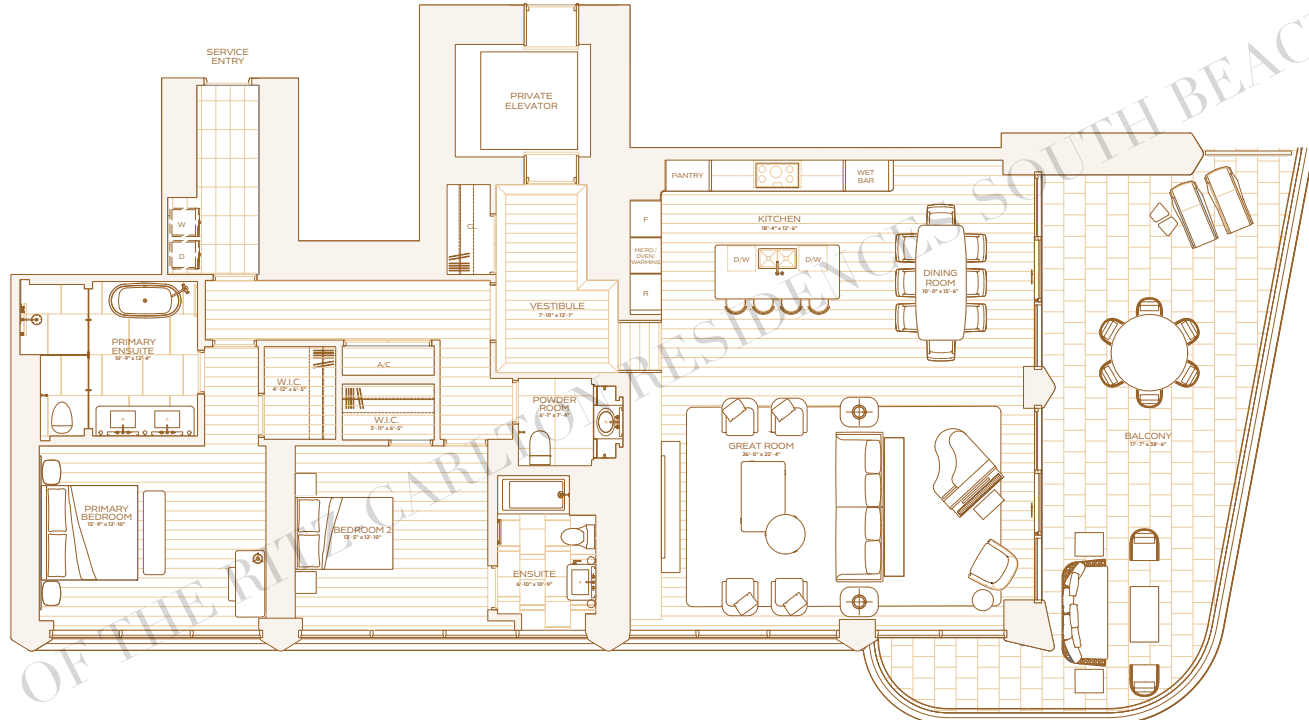
RESIDENCE B LEVEL 8

TWO BEDROOMS
TWO BATHROOMS
POWDER ROOM

INTERIOR
2,217 SQ. FT. / 206 SQ. M.

EXTERIOR
591 SQ. FT. / 55 SQ. M.

TOTAL
2,808 SQ. FT. / 261 SQ. M.



OCEAN



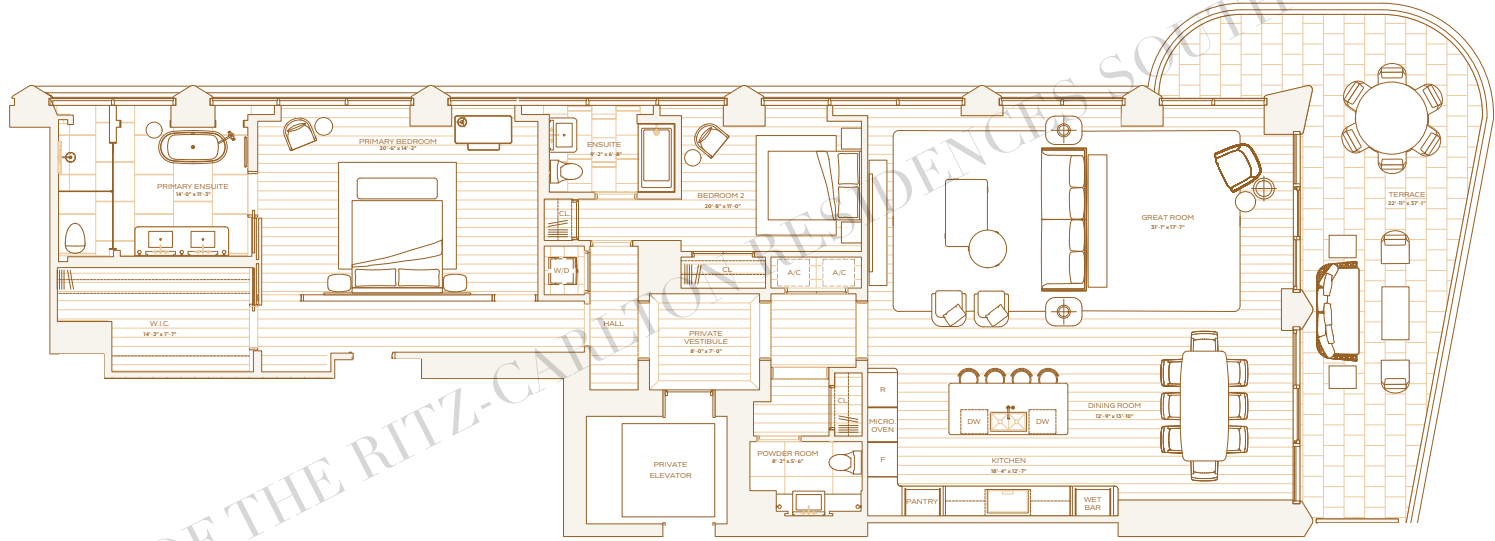
RESIDENCE A LEVEL 9 & 10

TWO BEDROOMS
TWO BATHROOMS
POWDER ROOM

INTERIOR
2,245 SQ. FT. / 209 SQ. M

EXTERIOR
449 SQ. FT. / 42 SQ. M

TOTAL
2,694 SQ. FT. / 251 SQ. M



OCEAN



PROPERTY OF THE RITZ-CARLTON RESIDENCES SOUTH BEACH



THE RITZ-CARLTON RESIDENCES SOUTH BEACH ARE NOT OWNED, DEVELOPED OR SOLD BY THE RITZ-CARLTON HOTEL COMPANY, LLC OR ITS AFFILIATES ("RITZ-CARLTON"). SOME BY DEVELOPMENT, LLC USES THE RITZ-CARLTON MARKS UNDER LICENSE FROM RITZ-CARLTON, WHO HAS NOT CONFIRMED THE ACCURACY OF ANY OF THE STATEMENTS OR REPRESENTATIONS MADE HEREIN. STATION INTERIOR SQUARE FOOTAGE IS MEASURED TO THE EXTERIOR FACE OF EXTERIOR WALLS AND TO THE CENTERLINE OF INTERIOR DIVIDING WALLS OR TO THE EXTERIOR FACE OF WALLS ADJOINING CORRIDORS OR OTHER COMMON ELEMENTS OR SHARED FACILITIES WITHOUT EXCLUDING AREAS THAT MAY BE OCCUPIED BY COLUMNS OR OTHER STRUCTURAL COMPONENTS. THE METHOD OF MEASUREMENT VARIES FROM AND IS LARGER THAN THE DIMENSIONS THAT WOULD BE DETERMINED BY LONG-THE DIMENSION AND THE CENTERLINE OF THE UNIT SET FORTH IN THE DECLARATION, WHICH GENERALLY ONLY INCLUDES THE EXTERIOR SURFACE BETWEEN THE EXTERIOR WALLS AND EXCLUDES STRUCTURAL COMPONENTS FOR REFERENCE. THE AREA OF THE UNIT DETERMINED IN ACCORDANCE WITH THE UNIT BOUNDARIES SET FORTH IN THE DECLARATION IS SET FORTH IN EXHIBIT 5 TO THE DECLARATION. ALL DIMENSIONS ARE APPROXIMATE AND MAY VARY WITH ACTUAL CONSTRUCTION. NOTE THAT MEASUREMENTS OF ROOMS SET FORTH ON THE FLOOR PLAN ARE GENERALLY TAKEN AT THE GREATEST POINTS OF EACH ROOM. ROOM AS THE ROOM HEREIN IS PERFECT RECTANGLES WITHOUT REGARD FOR ANY CURTAIN OR RISER PARTIES. ACCORDINGLY, THE AREA OF THE ACTUAL ROOM WILL TYPICALLY BE SMALLER THAN THE PRODUCT OBTAINED BY MULTIPLYING THE STATED LENGTH TIMES WIDTH. ALL FLOOR PLAN AND DEVELOPMENT PLANS ARE SUBJECT TO CHANGE. THE DEVELOPER DOES NOT WARRANT THE RIGHT TO MAKE MODIFICATIONS, REVISIONS, AND CHANGES IN ITS SOLE AND ABSOLUTE DISCRETION. ALL DEPICTIONS OF FIXTURES, APPLIANCES, BUILT-IN COUNTERTOPS, FLOORCOVERINGS, LIGHTING, LANDSCAPING AND OTHER MATTERS OF DETAIL, INCLUDING, WITHOUT LIMITATION, ITEMS OF FINISH AND DECORATION, ARE CONCEPTUAL ONLY AND ARE NOT NECESSARILY INCLUDED IN EACH UNIT. CONSULT YOUR PROSPECTUS AND PURCHASE AGREEMENT.



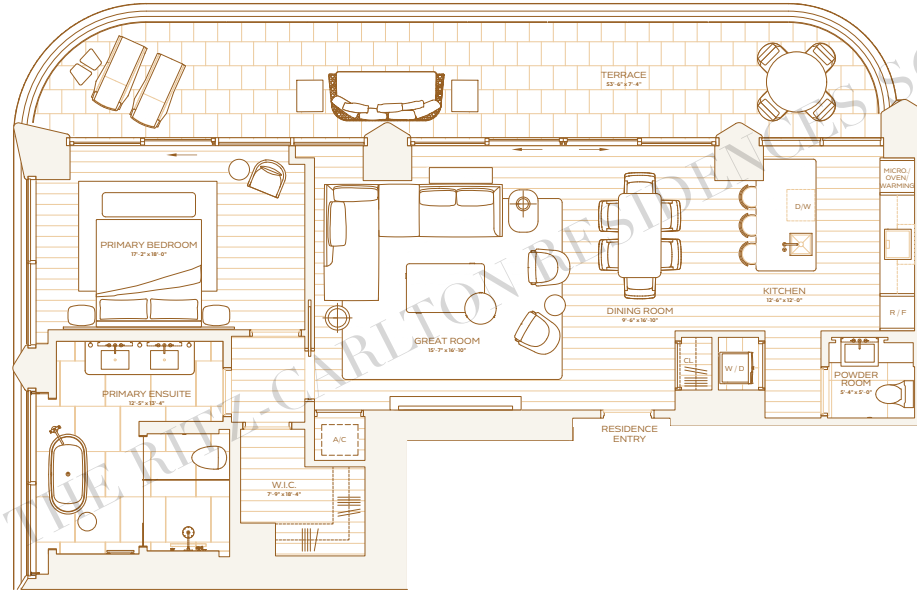
RESIDENCE D LEVEL 8

ONE BEDROOM
ONE BATHROOM
POWDER ROOM

INTERIOR
1,197 SQ. FT. / 111 SQ. M

EXTERIOR
385 SQ. FT. / 36 SQ. M

TOTAL
1,582 SQ. FT. / 147 SQ. M



OCEAN

