

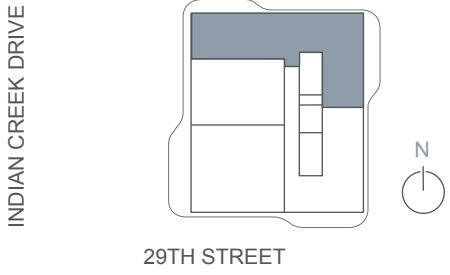
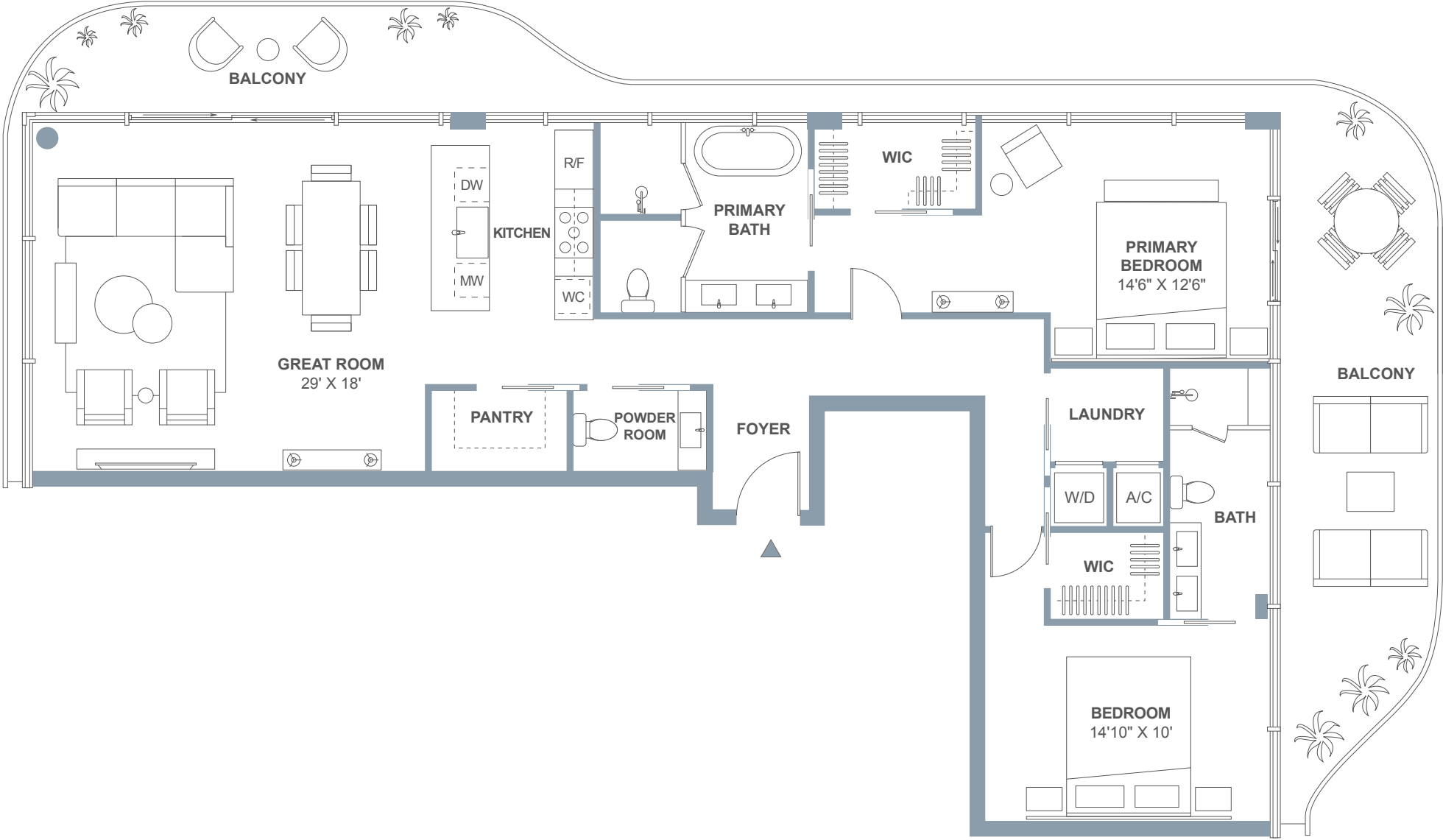
TWENTY NINE  
**INDIAN CREEK**

MIAMI BEACH

Residence 01

LEVELS 4 AND 6

2 BEDROOMS	
2.5 BATHROOMS	
INTERIOR	1,476 SF   137 SQ. M
EXTERIOR	564 SF   52 SQ. M
<b>TOTAL</b>	<b>2,040 SF   189 SQ. M</b>



2901 INDIAN CREEK DRIVE, MIAMI BEACH, FLORIDA, 33140 | 29INDIANCREEKDRIVE.COM

Stated dimensions are measured to the exterior boundaries of the exterior walls and the centerline of interior demising walls and in fact vary from the dimensions that would be determined by using the description and definition of the "unit" set forth in the declaration (which generally only includes the interior airspace between the perimeter walls and excludes interior structural components). For your reference, the area of the unit, determined in accordance with those defined unit boundaries, is set forth in exhibit 3 to the declaration of the condominium. Note that measurements of rooms set forth on this floor plan are generally taken at the greatest points of each given room (as if the room were a perfect rectangle), without regard for any cutouts. Accordingly, the area of the actual room will typically be smaller than the product obtained by multiplying the stated length times width. All dimensions are approximate and may vary with actual construction, and all floor plans and development plans are subject to change.

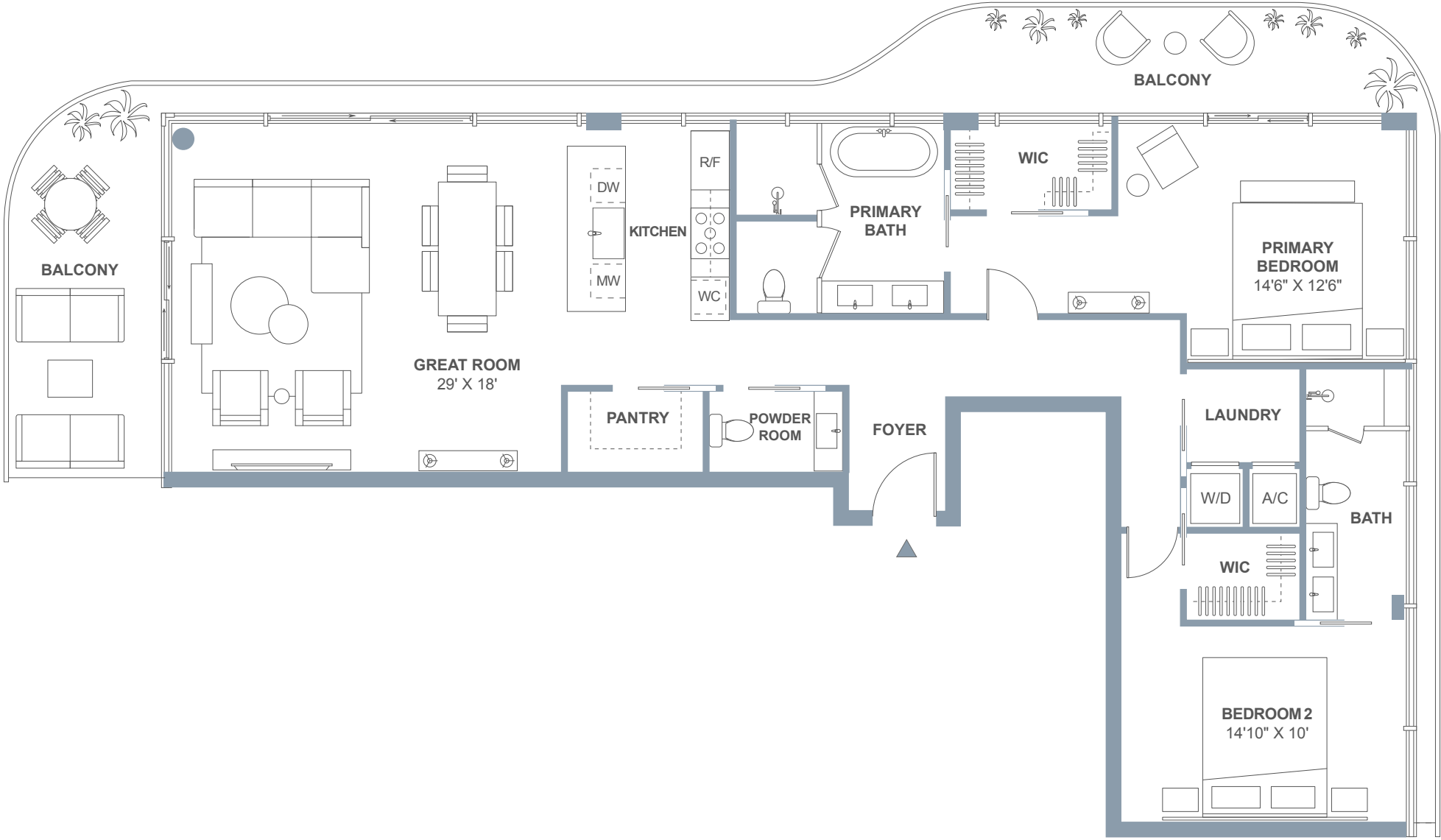
TWENTY NINE  
**INDIAN CREEK**

MIAMI BEACH

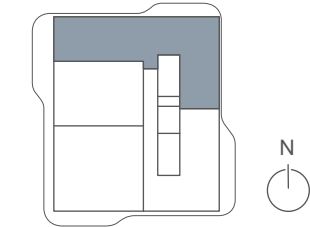
Residence 01

LEVELS 5 AND 7

2 BEDROOMS	
2.5 BATHROOMS	
INTERIOR	1,476 SF   137 SQ. M
EXTERIOR	419 SF   39 SQ. M
<b>TOTAL</b>	<b>1,895 SF   176 SQ. M</b>



INDIAN CREEK DRIVE



29TH STREET

2901 INDIAN CREEK DRIVE, MIAMI BEACH, FLORIDA, 33140 | 29INDIANCREEKDRIVE.COM

Stated dimensions are measured to the exterior boundaries of the exterior walls and the centerline of interior demising walls and in fact vary from the dimensions that would be determined by using the description and definition of the "unit" set forth in the declaration (which generally only includes the interior airspace between the perimeter walls and excludes interior structural components). For your reference, the area of the unit, determined in accordance with those defined unit boundaries, is set forth in exhibit 3 to the declaration of the condominium. Note that measurements of rooms set forth on this floor plan are generally taken at the greatest points of each given room (as if the room were a perfect rectangle), without regard for any cutouts. Accordingly, the area of the actual room will typically be smaller than the product obtained by multiplying the stated length times width. All dimensions are approximate and may vary with actual construction, and all floor plans and development plans are subject to change.

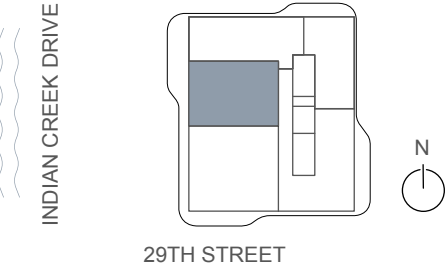
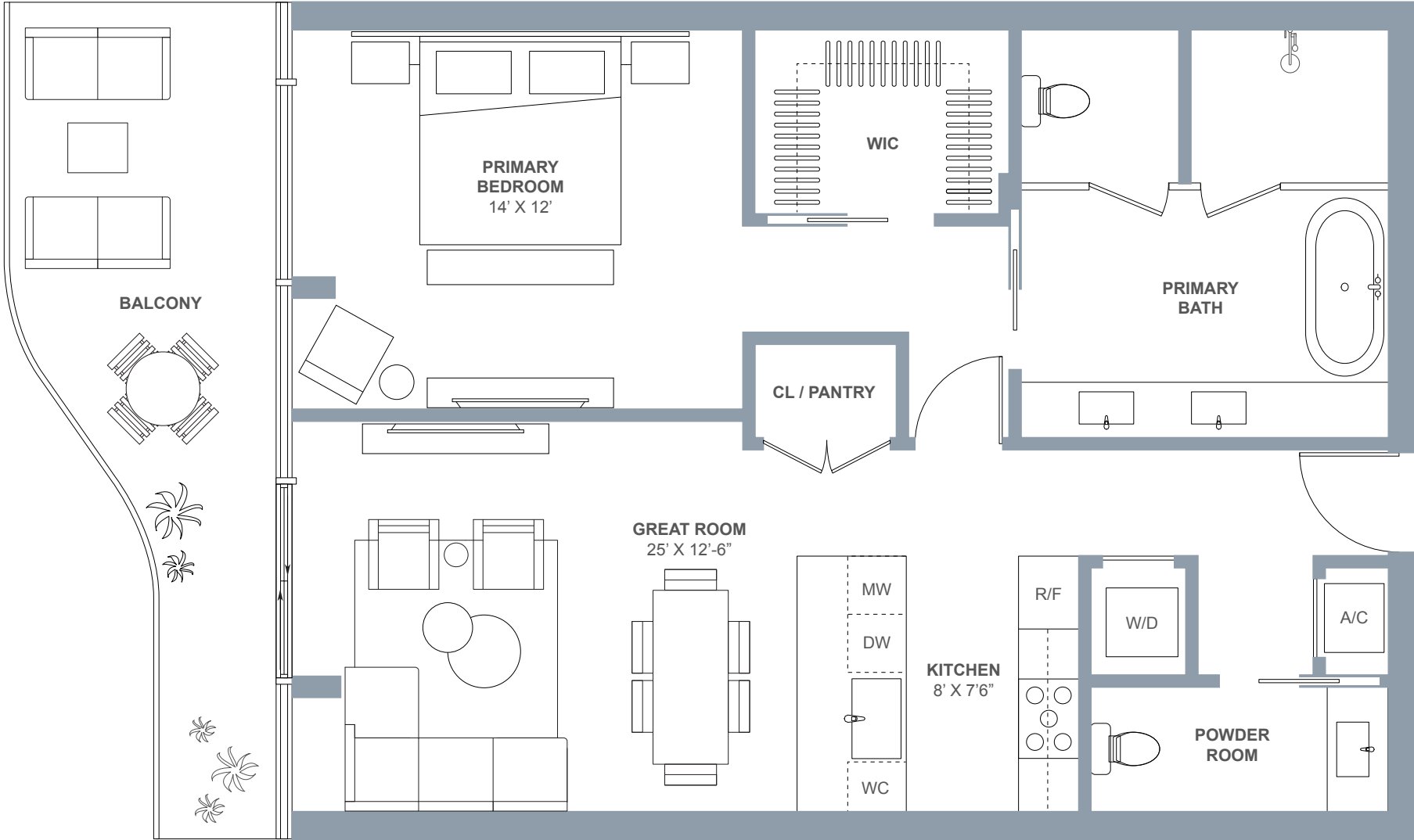
TWENTY NINE  
**INDIAN CREEK**

MIAMI BEACH

Residence 02

LEVEL 3

1 BEDROOM		
1.5 BATHROOMS		
INTERIOR	913 SF	85 SQ. M
EXTERIOR	162 SF	15 SQ. M
TOTAL	1,075 SF	100 SQ. M



2901 INDIAN CREEK DRIVE, MIAMI BEACH, FLORIDA, 33140 | 29INDIANCREEKDRIVE.COM

Stated dimensions are measured to the exterior boundaries of the exterior walls and the centerline of interior demising walls and in fact vary from the dimensions that would be determined by using the description and definition of the "unit" set forth in the declaration (which generally only includes the interior airspace between the perimeter walls and excludes interior structural components). For your reference, the area of the unit, determined in accordance with those defined unit boundaries, is set forth in exhibit 3 to the declaration of the condominium. Note that measurements of rooms set forth on this floor plan are generally taken at the greatest points of each given room (as if the room were a perfect rectangle), without regard for any cutouts. Accordingly, the area of the actual room will typically be smaller than the product obtained by multiplying the stated length times width. All dimensions are approximate and may vary with actual construction, and all floor plans and development plans are subject to change.

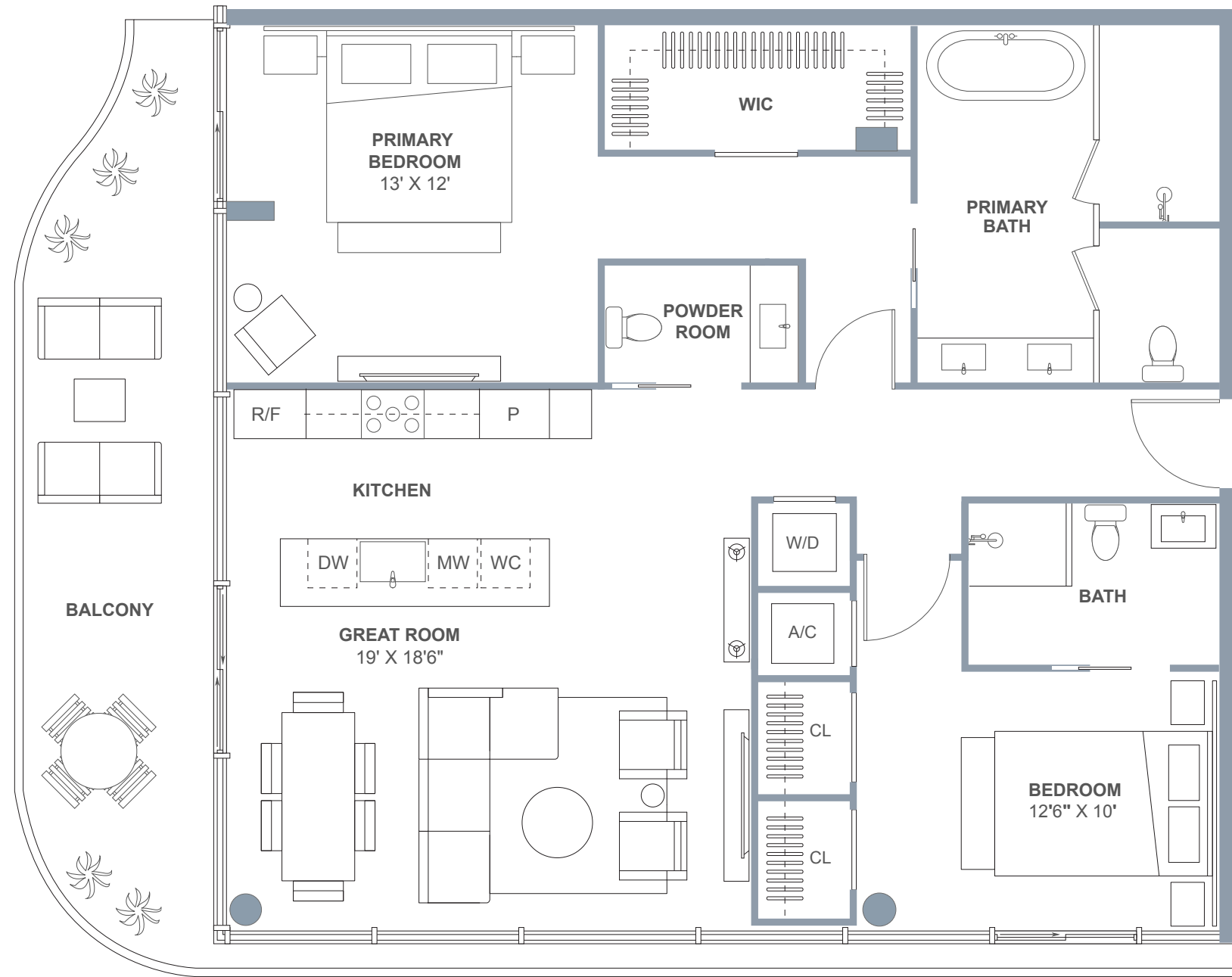
TWENTY NINE  
INDIAN CREEK

MIAMI BEACH

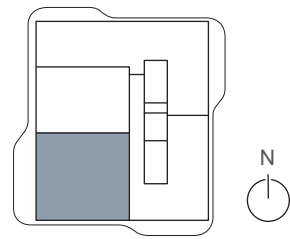
Residence 03

LEVELS 4 AND 6

2 BEDROOMS	
2.5 BATHROOMS	
INTERIOR	1,146 SF   106 SQ. M
EXTERIOR	296 SF   27 SQ. M
<b>TOTAL</b>	<b>1,442 SF   133 SQ. M</b>



INDIAN CREEK DRIVE



29TH STREET

2901 INDIAN CREEK DRIVE, MIAMI BEACH, FLORIDA, 33140 | 29INDIANCREEKDRIVE.COM

Stated dimensions are measured to the exterior boundaries of the exterior walls and the centerline of interior demising walls and in fact vary from the dimensions that would be determined by using the description and definition of the "unit" set forth in the declaration (which generally only includes the interior airspace between the perimeter walls and excludes interior structural components). For your reference, the area of the unit, determined in accordance with those defined unit boundaries, is set forth in exhibit 3 to the declaration of the condominium. Note that measurements of rooms set forth on this floor plan are generally taken at the greatest points of each given room (as if the room were a perfect rectangle), without regard for any cutouts. Accordingly, the area of the actual room will typically be smaller than the product obtained by multiplying the stated length times width. All dimensions are approximate and may vary with actual construction, and all floor plans and development plans are subject to change.

TWENTY NINE

# INDIAN CREEK

MIAMI BEACH

## Residence 03

LEVELS 5 AND 7

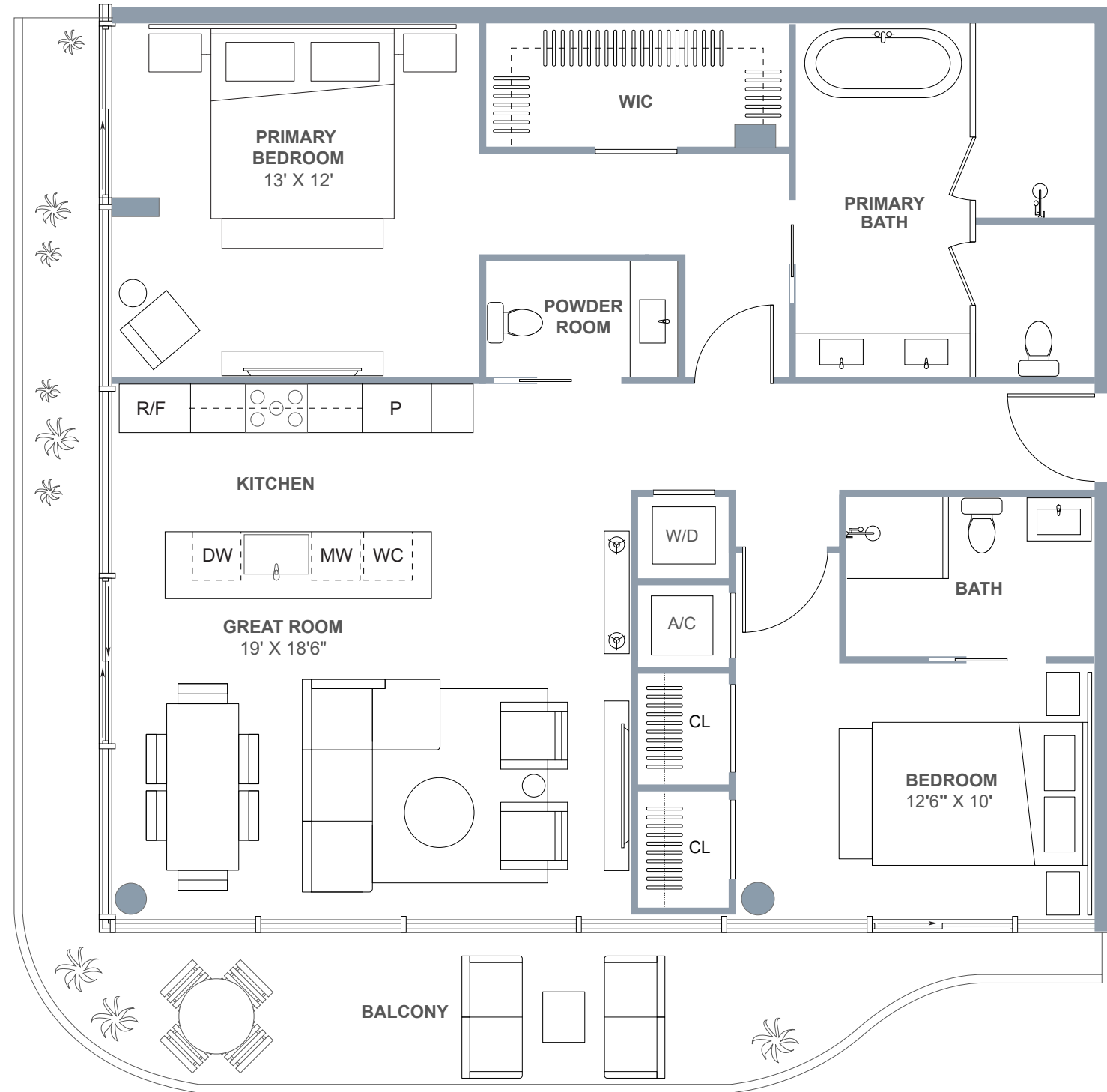
2 BEDROOMS

2.5 BATHROOMS

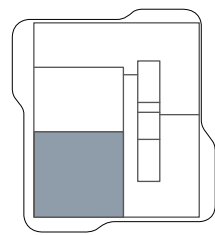
INTERIOR 1,146 SF | 106 SQ. M

EXTERIOR 296 SF | 27 SQ. M

TOTAL 1,442 SF | 133 SQ. M



INDIAN CREEK DRIVE



29TH STREET

2901 INDIAN CREEK DRIVE, MIAMI BEACH, FLORIDA, 33140 | 29INDIANCREEKDRIVE.COM

Stated dimensions are measured to the exterior boundaries of the exterior walls and the centerline of interior demising walls and in fact vary from the dimensions that would be determined by using the description and definition of the "unit" set forth in the declaration (which generally only includes the interior airspace between the perimeter walls and excludes interior structural components). For your reference, the area of the unit, determined in accordance with those defined unit boundaries, is set forth in exhibit 3 to the declaration of the condominium. Note that measurements of rooms set forth on this floor plan are generally taken at the greatest points of each given room (as if the room were a perfect rectangle), without regard for any cutouts. Accordingly, the area of the actual room will typically be smaller than the product obtained by multiplying the stated length times width. All dimensions are approximate and may vary with actual construction, and all floor plans and development plans are subject to change.

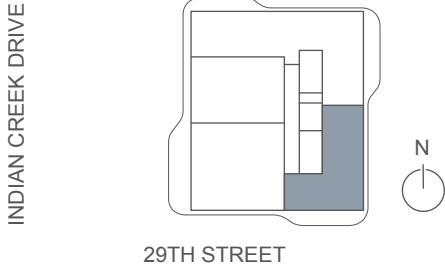
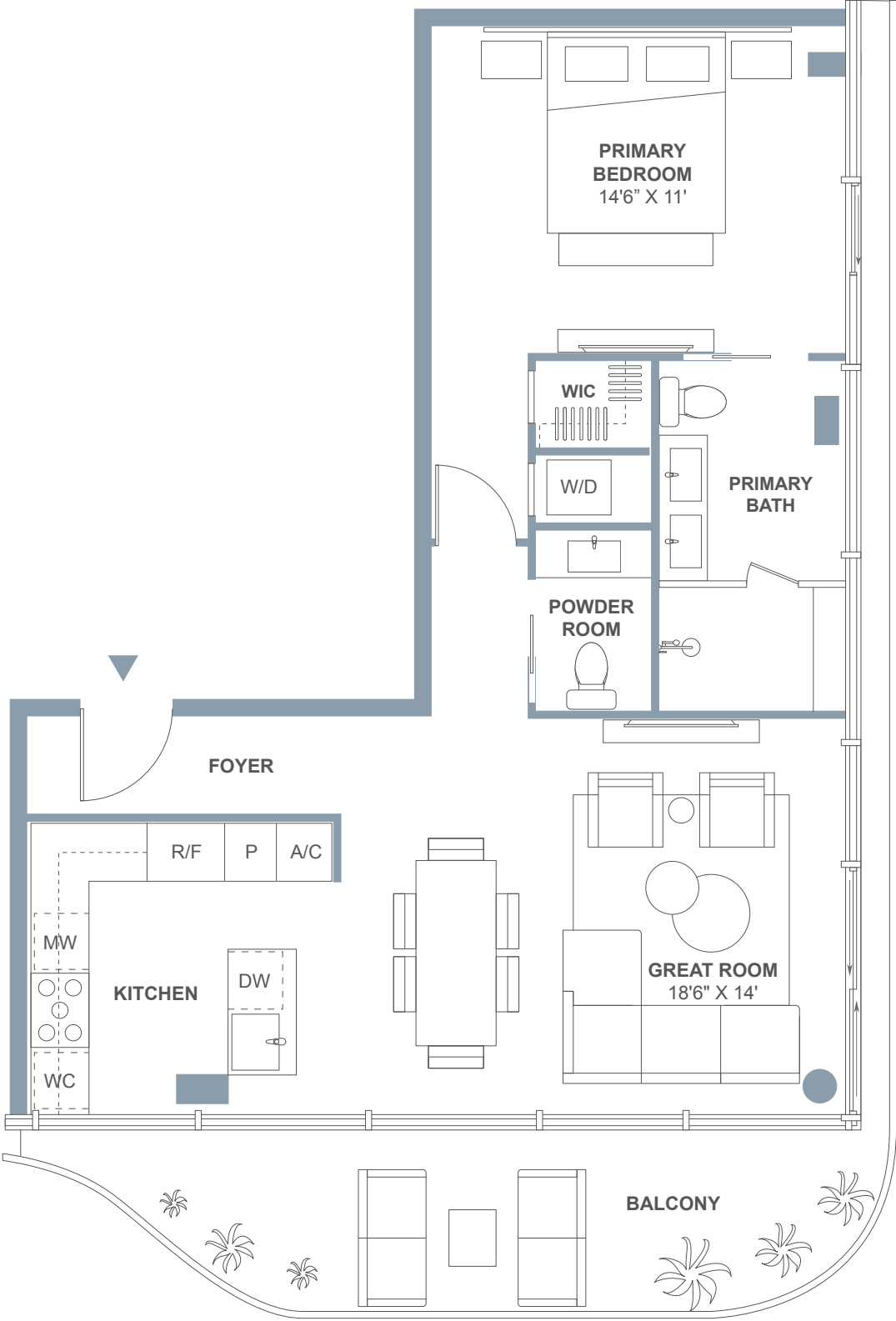
TWENTY NINE  
**INDIAN CREEK**

MIAMI BEACH

Residence 04

LEVELS 4 AND 6

1 BEDROOM	
1.5 BATHROOMS	
INTERIOR	820 SF   76 SQ. M
EXTERIOR	183 SF   17 SQ. M
<b>TOTAL</b>	<b>1,003 SF   93 SQ. M</b>



2901 INDIAN CREEK DRIVE, MIAMI BEACH, FLORIDA, 33140 | 29INDIANCREEKDRIVE.COM

Stated dimensions are measured to the exterior boundaries of the exterior walls and the centerline of interior demising walls and in fact vary from the dimensions that would be determined by using the description and definition of the "unit" set forth in the declaration (which generally only includes the interior airspace between the perimeter walls and excludes interior structural components). For your reference, the area of the unit, determined in accordance with those defined unit boundaries, is set forth in exhibit 3 to the declaration of the condominium. Note that measurements of rooms set forth on this floor plan are generally taken at the greatest points of each given room (as if the room were a perfect rectangle), without regard for any cutouts. Accordingly, the area of the actual room will typically be smaller than the product obtained by multiplying the stated length times width. All dimensions are approximate and may vary with actual construction, and all floor plans and development plans are subject to change.

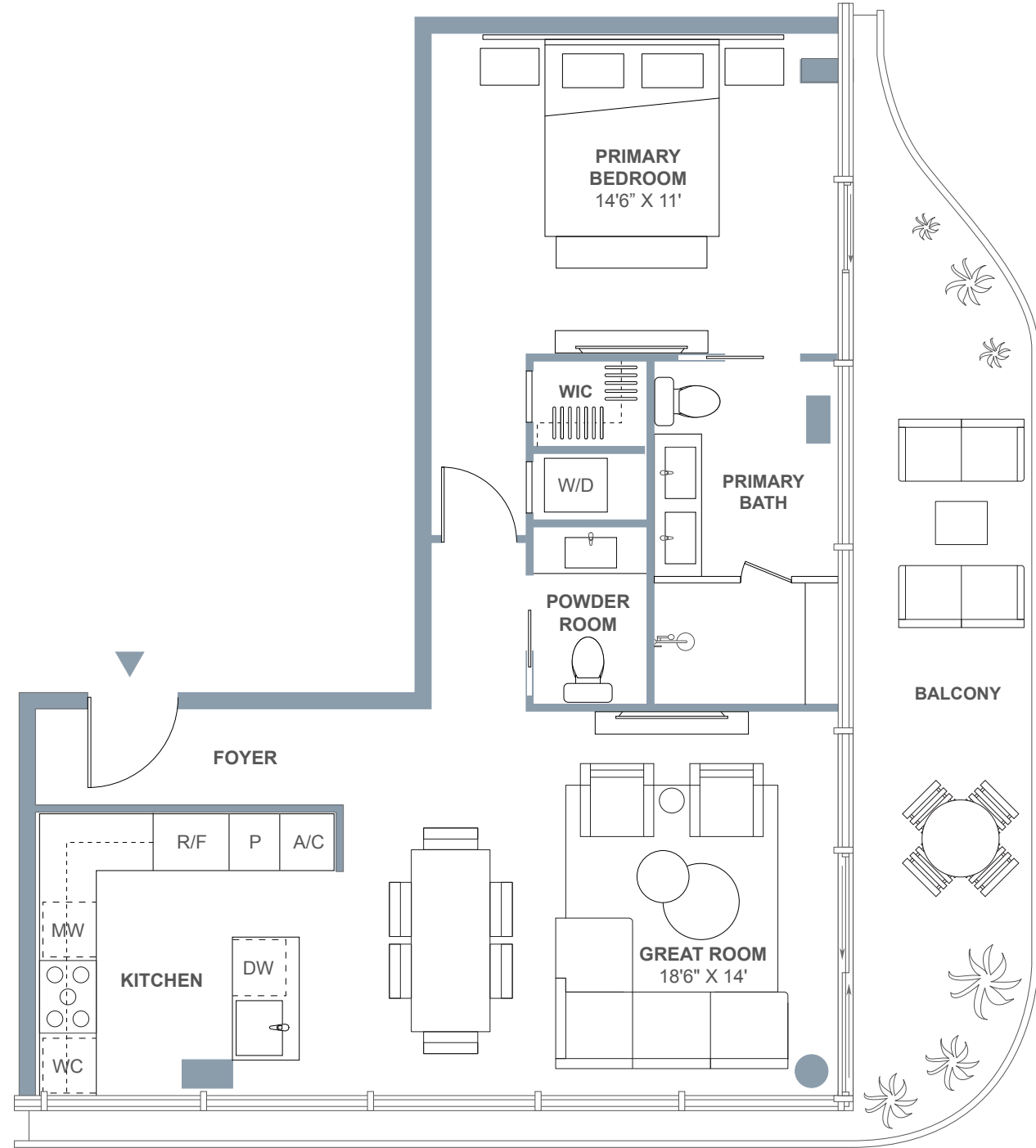
TWENTY NINE  
**INDIAN CREEK**

MIAMI BEACH

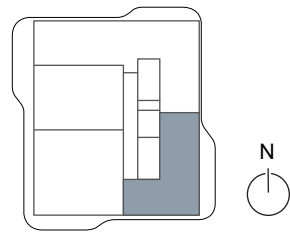
Residence 04

LEVELS 5 AND 7

1 BEDROOM		
1.5 BATHROOMS		
INTERIOR	820 SF	76 SQ. M
EXTERIOR	284 SF	26 SQ. M
TOTAL	1,104 SF	102 SQ. M



INDIAN CREEK DRIVE



29TH STREET

2901 INDIAN CREEK DRIVE, MIAMI BEACH, FLORIDA, 33140

Stated dimensions are measured to the exterior boundaries of the exterior walls and the centerline of interior demising walls and in fact vary from the dimensions that would be determined by using the description and definition of the "unit" set forth in the declaration (which generally only includes the interior airspace between the perimeter walls and excludes interior structural components). For your reference, the area of the unit, determined in accordance with those defined unit boundaries, is set forth in exhibit 3 to the declaration of the condominium. Note that measurements of rooms set forth on this floor plan are generally taken at the greatest points of each given room (as if the room were a perfect rectangle), without regard for any cutouts. Accordingly, the area of the actual room will typically be smaller than the product obtained by multiplying the stated length times width. All dimensions are approximate and may vary with actual construction, and all floor plans and development plans are subject to change.