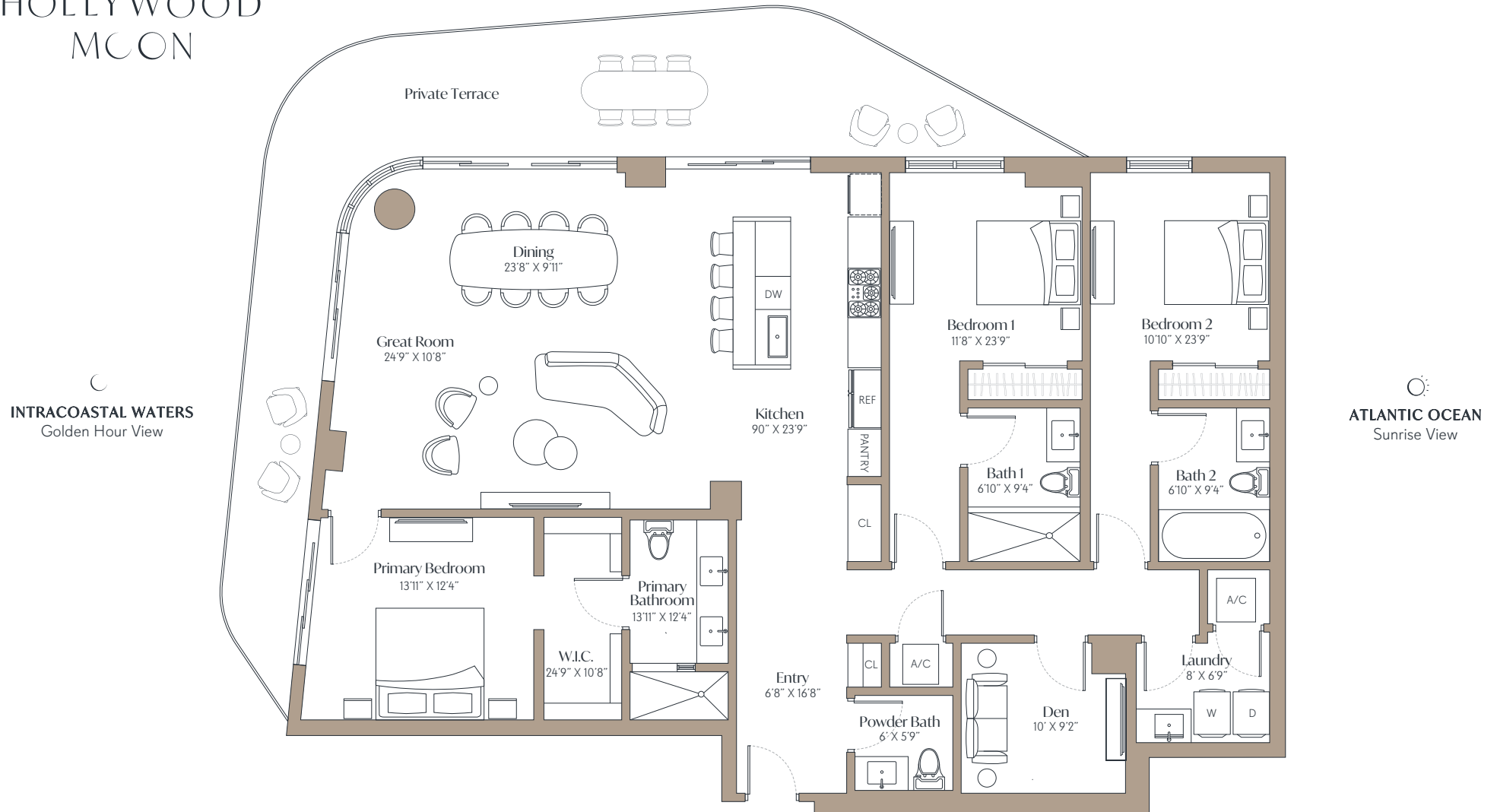




HOLLYWOOD MOON

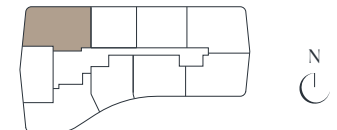
901 SOUTH OCEAN DRIVE
HOLLYWOOD BEACH, FL 33139



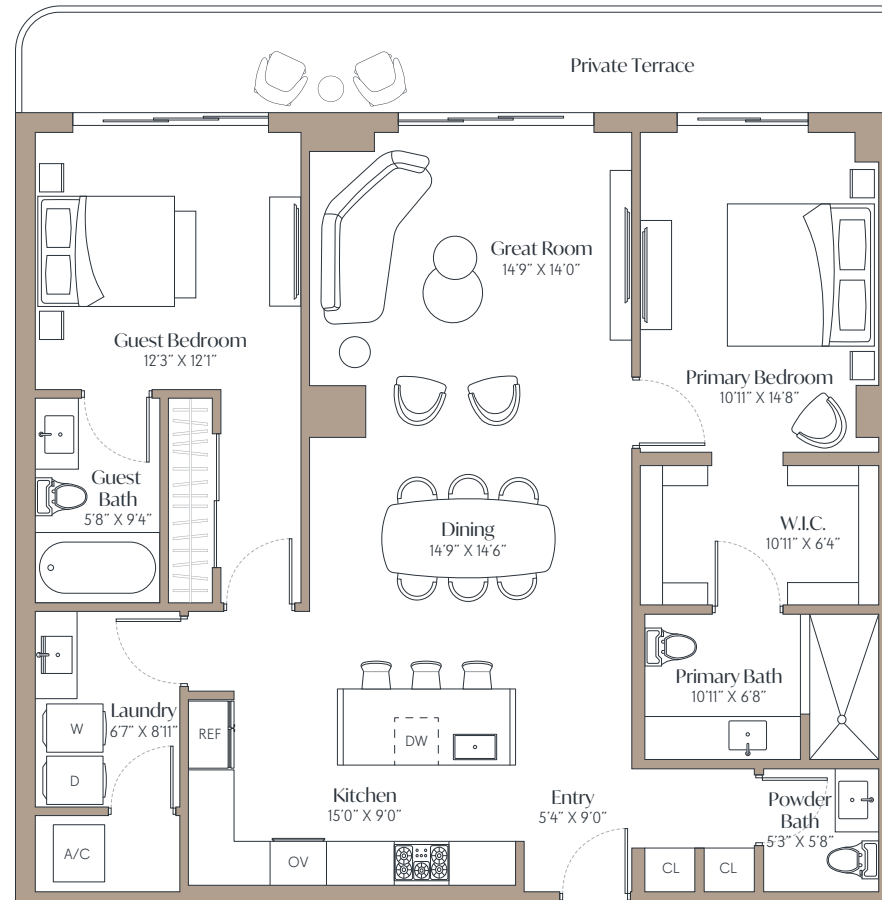
Residence 01

3 Bedrooms + Den
3.5 Bathrooms

INTERIOR 2,116 SqFt / 197 SqM
EXTERIOR 364-516 SqFt / 34-48 SqM




INTRACOASTAL WATERS
Golden Hour View

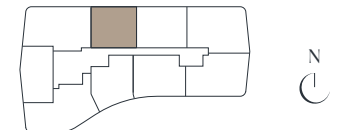



ATLANTIC OCEAN
Sunrise View

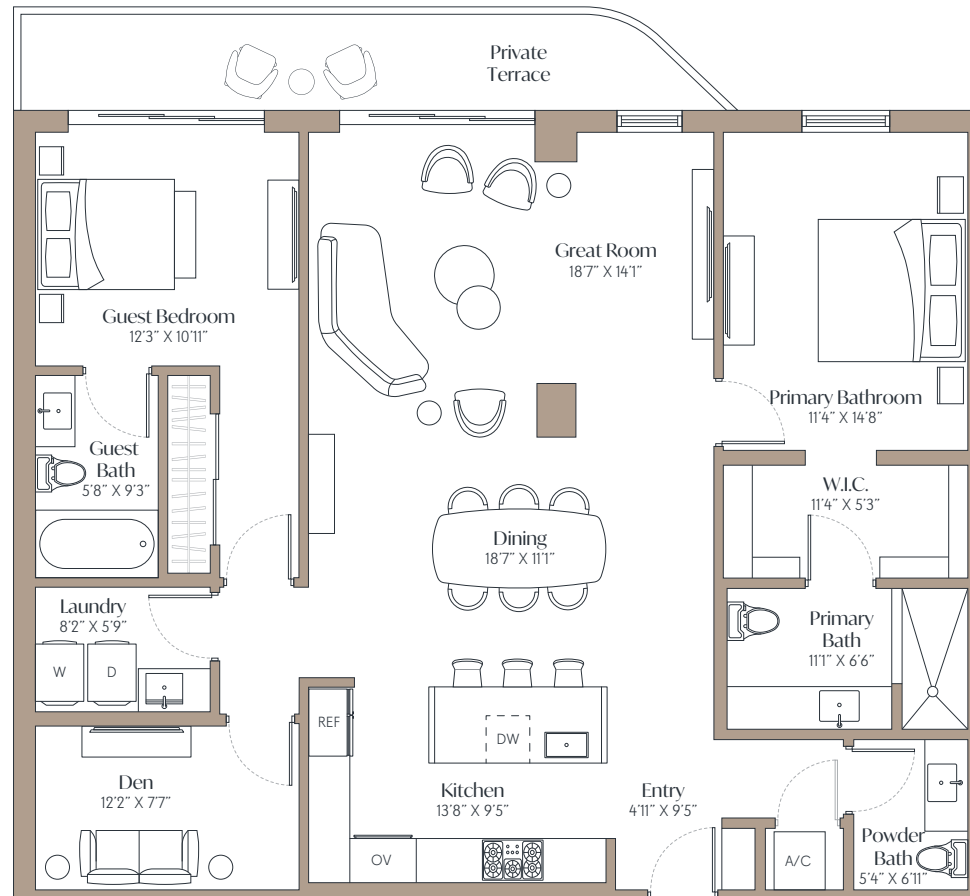
Residence 02

2 Bedrooms
2.5 Bathrooms

INTERIOR 1,423 SqFt / 132 SqM
EXTERIOR 192-206 SqFt / 18-19 SqM



INTRACOASTAL WATERS
Golden Hour View

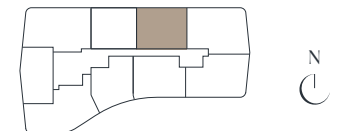


ATLANTIC OCEAN
Sunrise View

Residence 03

2 Bedrooms + Den
2.5 Bathrooms

INTERIOR 1,575 SqFt / 146 SqM
EXTERIOR 139-161 SqFt / 13-15 SqM



ORAL REPRESENTATIONS CANNOT BE RELIED UPON AS CORRECTLY STATING REPRESENTATIONS OF THE DEVELOPER. FOR CORRECT REPRESENTATIONS, MAKE REFERENCE TO THIS BROCHURE AND TO THE DOCUMENTS REQUIRED BY § 718.503, FLORIDA STATUTES, TO BE FURNISHED BY A DEVELOPER TO A BUYER OR LESSEE.

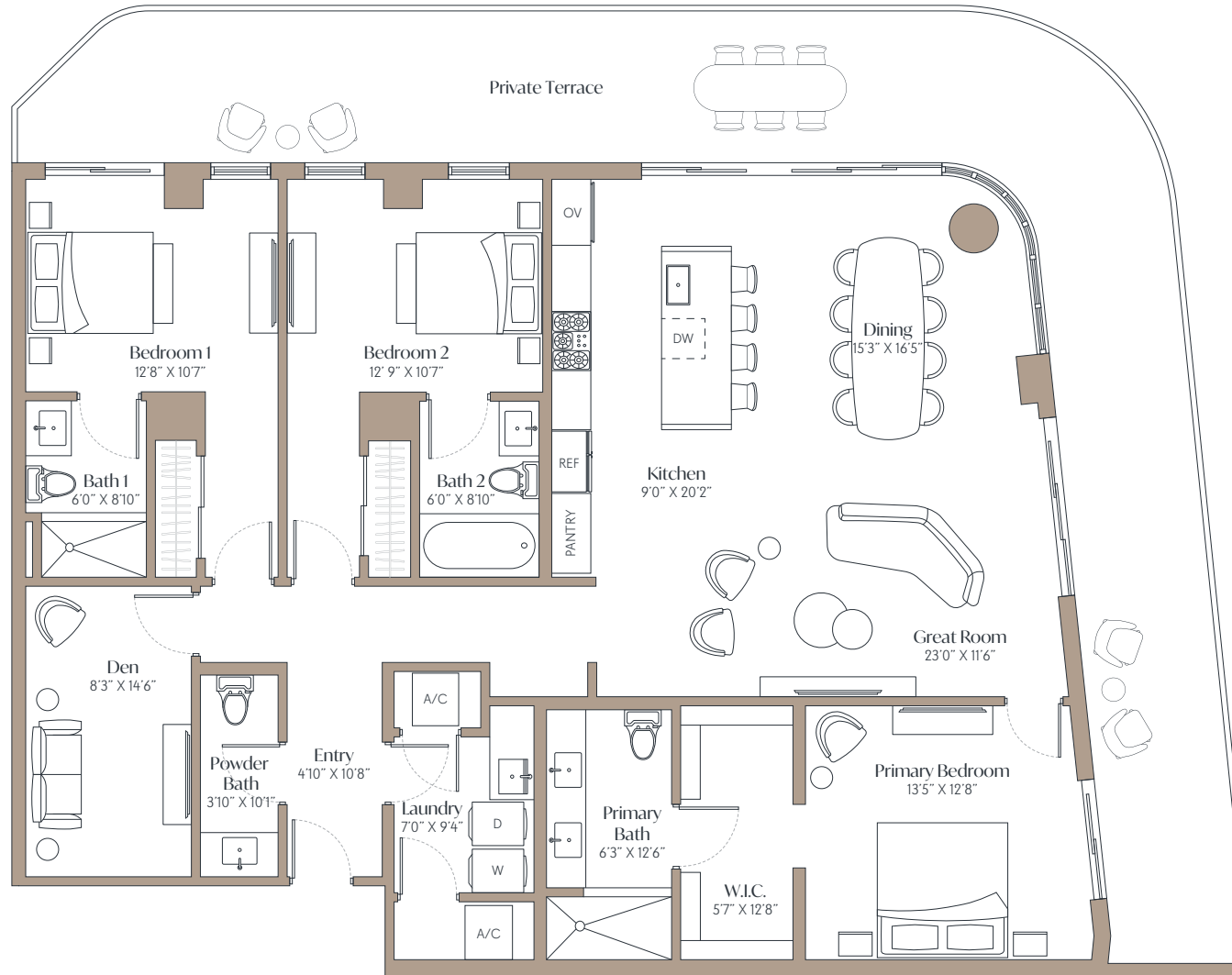
Neither Hollywood Moon LLC nor any of its affiliates or related persons makes any representation, warranty, or guarantee, expressed or implied, in respect of any statement or information made or contained in these materials. Neither Hollywood Moon LLC nor any of its directors, officers, employees, or agents has or will have any responsibility or liability arising out of, or related to, these materials or the transactions contemplated by these materials, including any liability or responsibility for any statement or information made or contained in or the use of these materials. The square footages of units set forth in this brochure and/or these marketing materials, and/or the methodology used to calculate such square footages, may differ from the square footages of units set forth in the other documents required by § 718.503, Florida Statutes, to be furnished by a developer to a buyer or lessee, and/or the methodology used to calculate such square footages.



HOLLYWOOD MOON

901 SOUTH OCEAN DRIVE
HOLLYWOOD BEACH, FL 33139

INTRACOASTAL WATERS
Golden Hour View

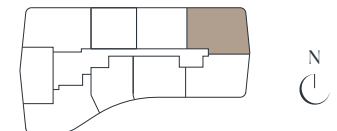


ATLANTIC OCEAN
Sunrise View

Residence 04

3 Bedrooms + Den
3.5 Bathrooms

INTERIOR 2,038 SqFt / 189 SqM
EXTERIOR 687-724 SqFt / 64-67 SqM

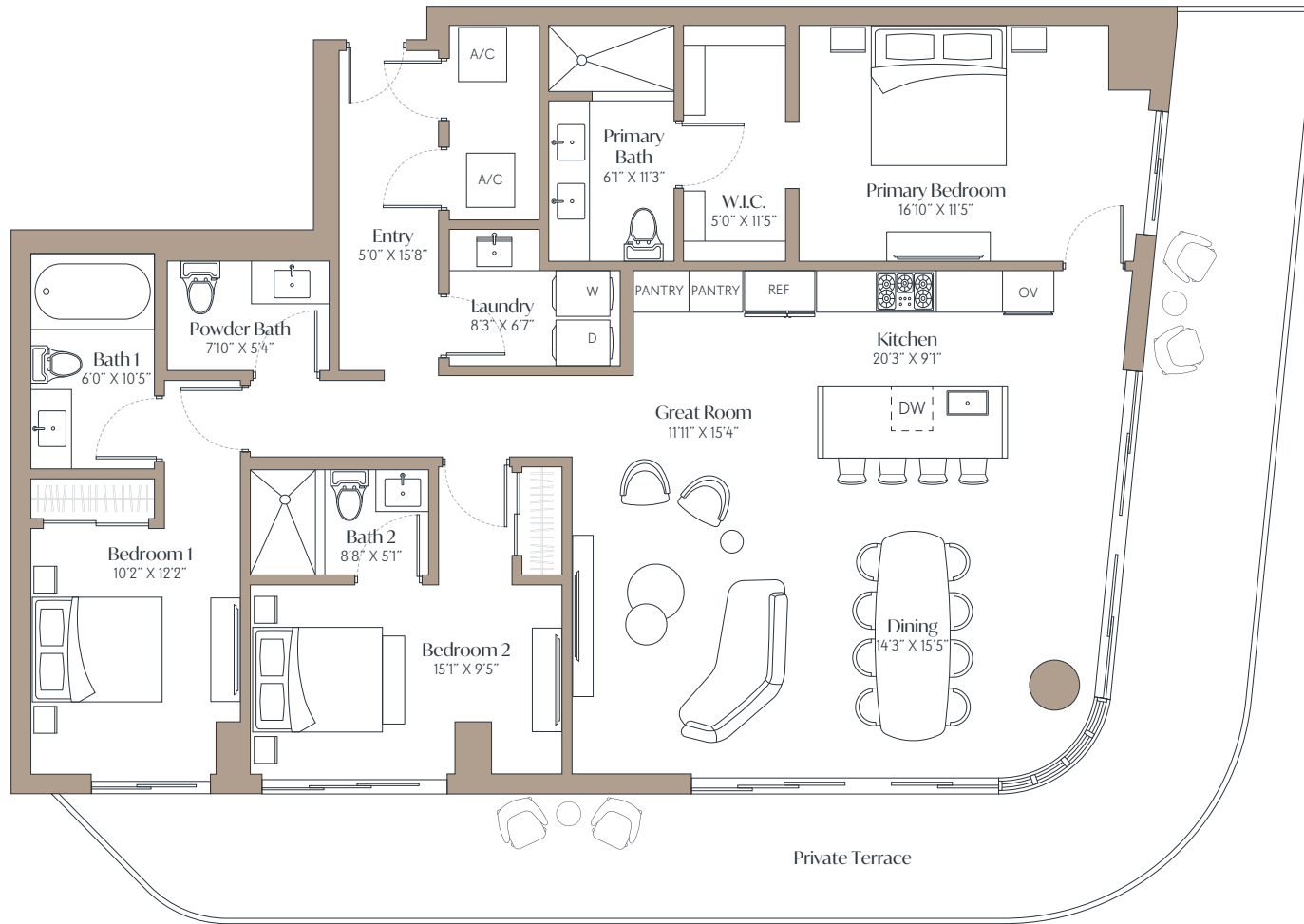




HOLLYWOOD MOON

901 SOUTH OCEAN DRIVE
HOLLYWOOD BEACH, FL 33139

INTRACOASTAL WATERS
Golden Hour View

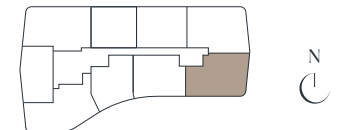


ATLANTIC OCEAN
Sunrise View

Residence 05

3 Bedrooms
3.5 Bathrooms

INTERIOR 1,852 SqFt / 172 SqM
EXTERIOR 563-593 SqFt / 52-55 SqM

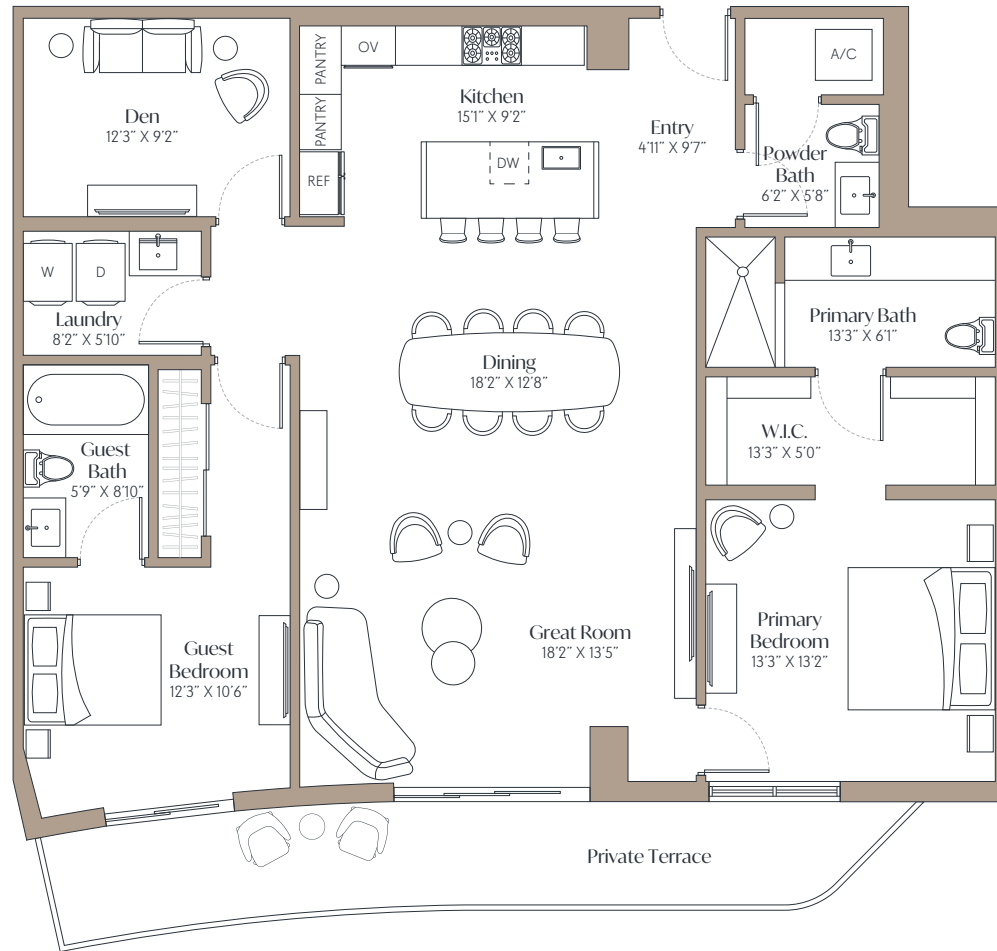




HOLLYWOOD MOON

901 SOUTH OCEAN DRIVE
HOLLYWOOD BEACH, FL 33139

INTRACOASTAL WATERS
Golden Hour View

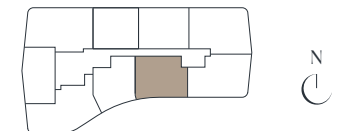


ATLANTIC OCEAN
Sunrise View

Residence 06

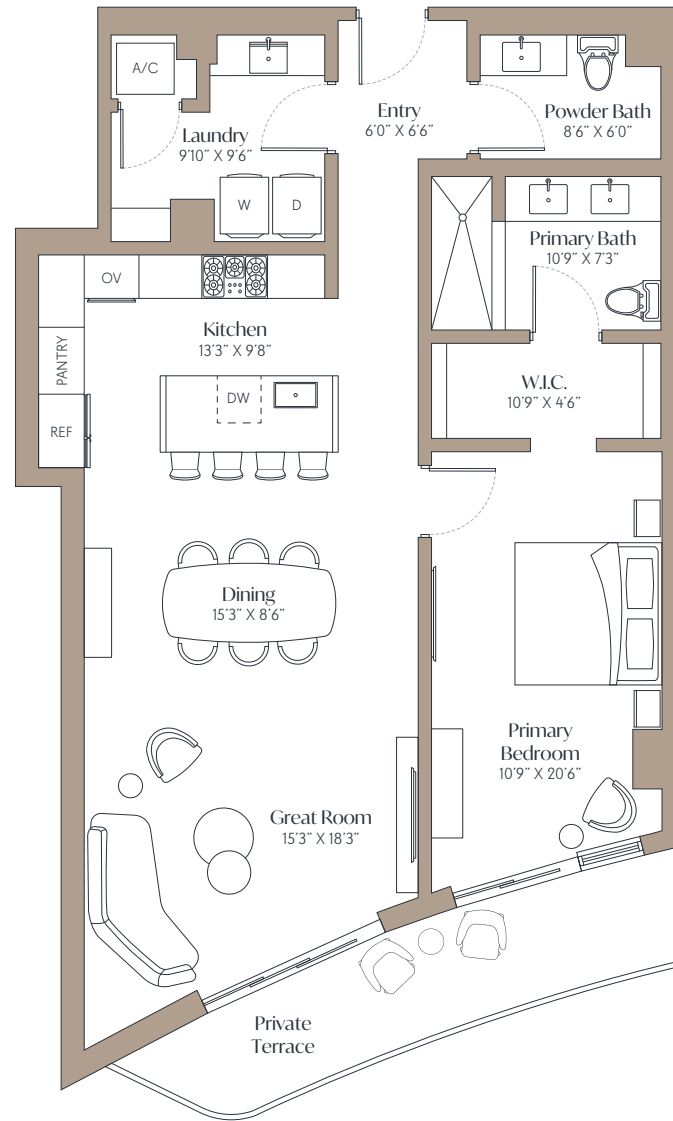
2 Bedrooms + Den
2.5 Bathrooms

INTERIOR 1,611 SqFt / 149 SqM
EXTERIOR 181-204 SqFt / 17-19 SqM




INTRACOASTAL WATERS
Golden Hour View

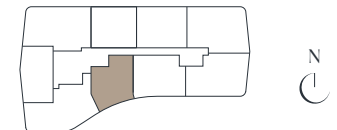

ATLANTIC OCEAN
Sunrise View



Residence 07

1 Bedroom
1.5 Bathrooms

INTERIOR 1,171 SqFt / 136 SqM
EXTERIOR 115-134 SqFt / 11-12 SqM





HOLLYWOOD MOON

Residence 08

3 Bedrooms | 3.5 Bathrooms

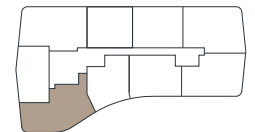
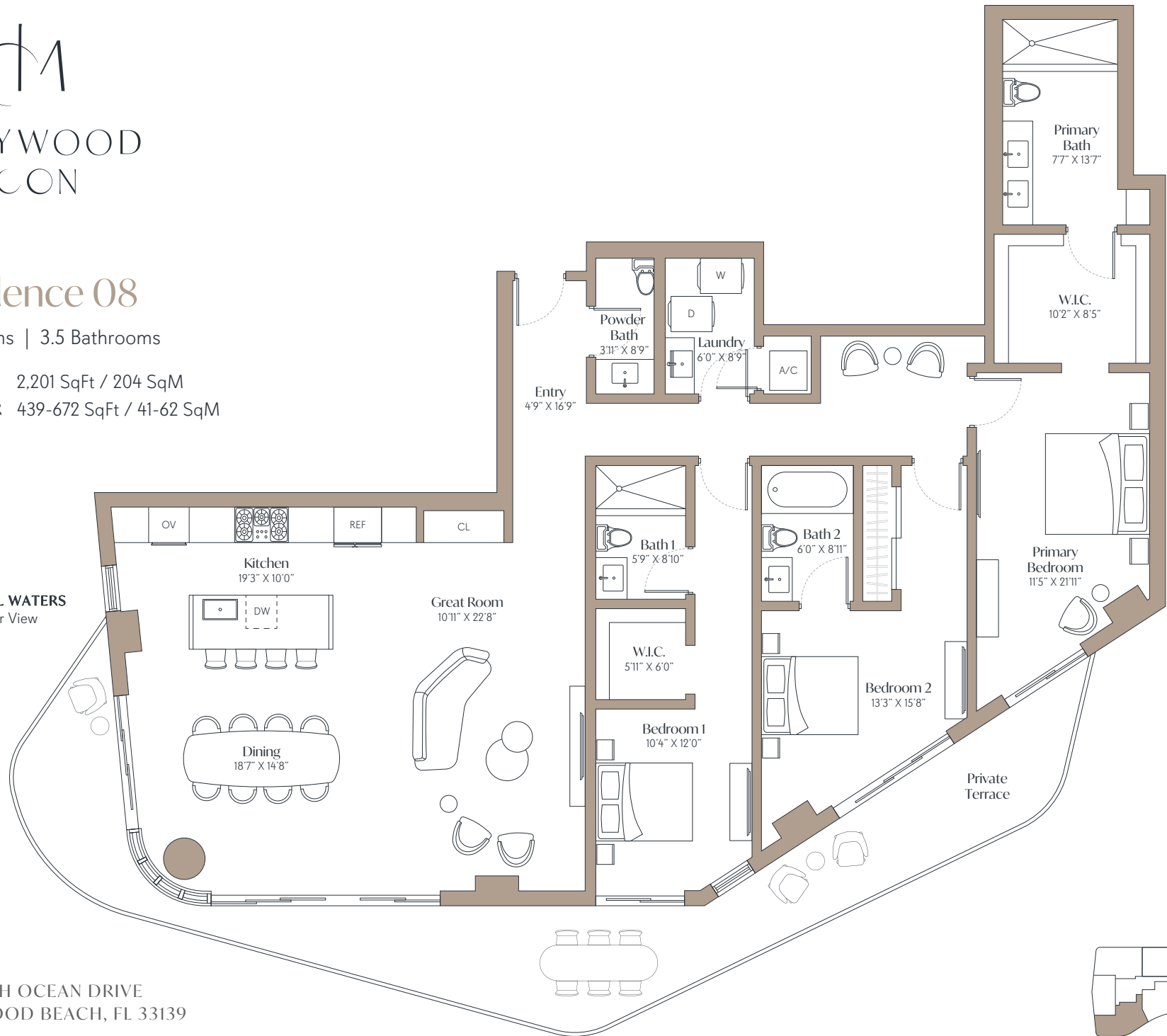
INTERIOR 2,201 SqFt / 204 SqM

EXTERIOR 439-672 SqFt / 41-62 SqM

INTRACOASTAL WATERS
Golden Hour View

ATLANTIC OCEAN
Sunrise View

901 SOUTH OCEAN DRIVE
HOLLYWOOD BEACH, FL 33139

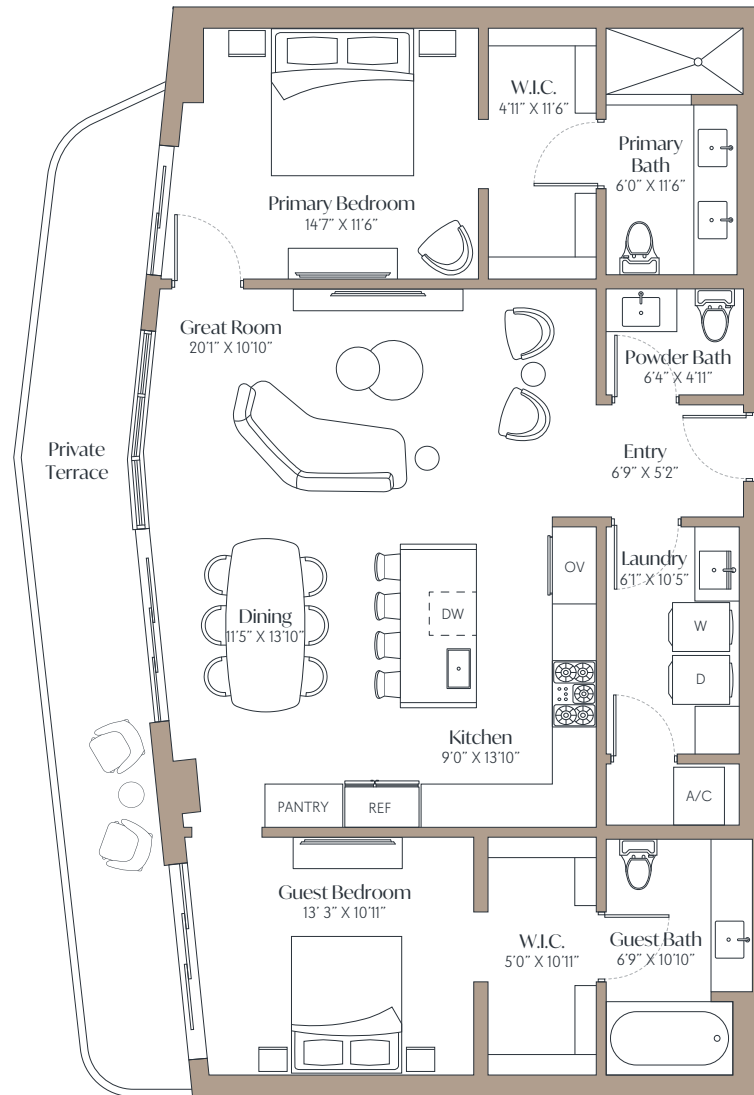


ORAL REPRESENTATIONS CANNOT BE RELIED UPON AS CORRECTLY STATING REPRESENTATIONS OF THE DEVELOPER. FOR CORRECT REPRESENTATIONS, MAKE REFERENCE TO THIS BROCHURE AND TO THE DOCUMENTS REQUIRED BY § 718.503, FLORIDA STATUTES, TO BE FURNISHED BY A DEVELOPER TO A BUYER OR LESSEE.

Neither Hollywood Moon LLC nor any of its affiliates or related persons makes any representation, warranty, or guarantee, expressed or implied, in respect of any statement or information made or contained in these materials. Neither Hollywood Moon LLC nor any of its directors, officers, employees, or agents has or will have any responsibility or liability arising out of, or related to, these materials or the transactions contemplated by these materials, including any liability or responsibility for any statement or information made or contained in or the use of these materials. The square footages of units set forth in this brochure and/or these marketing materials, and/or the methodology used to calculate such square footages, may differ from the square footages of units set forth in the other documents required by § 718.503, Florida Statutes, to be furnished by a developer to a buyer or lessee, and/or the methodology used to calculate such square footages.


INTRACOASTAL WATERS
Golden Hour View

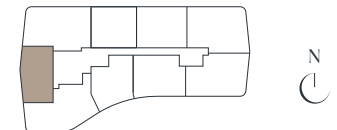

ATLANTIC OCEAN
Sunrise View



Residence 09

2 Bedrooms
2.5 Bathrooms

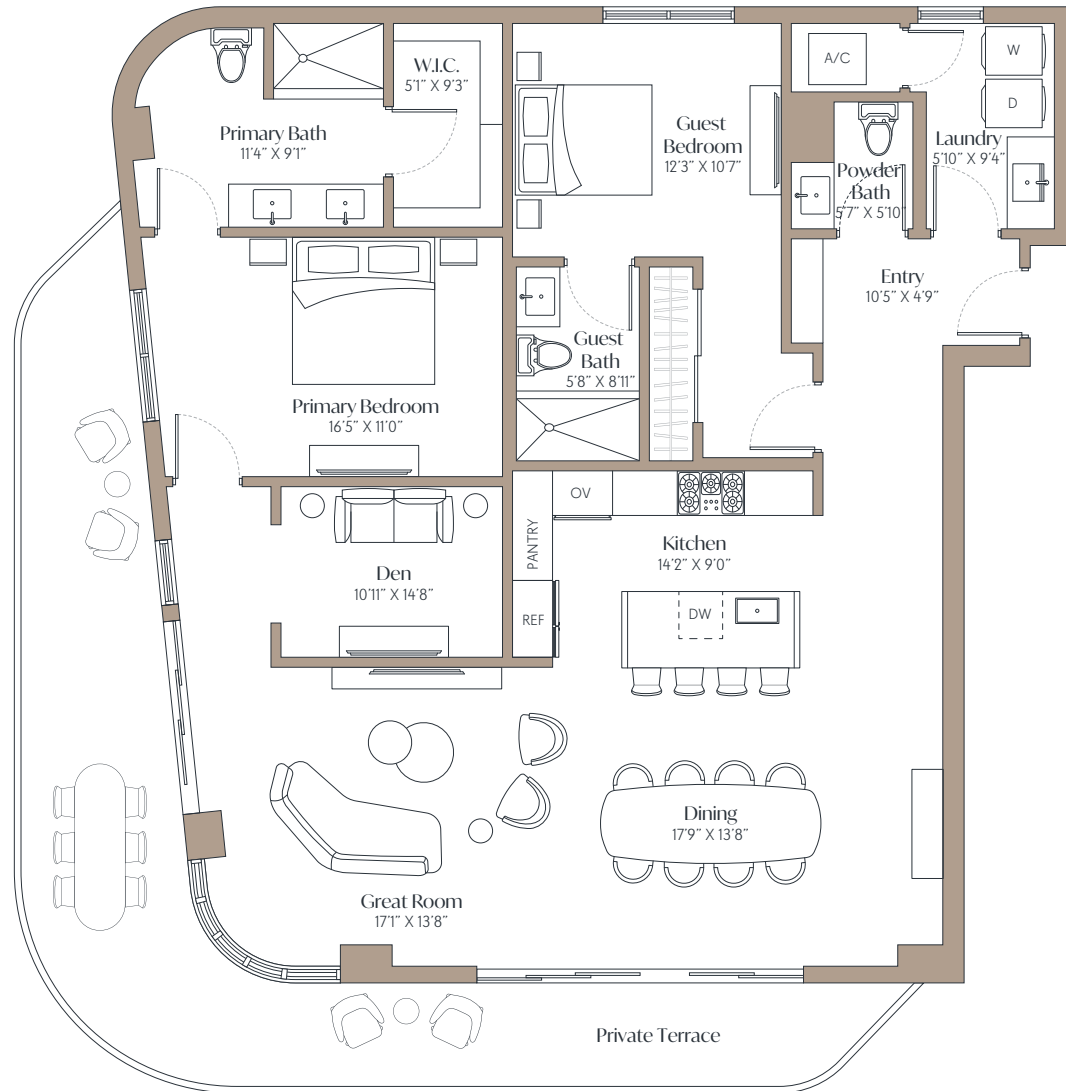
INTERIOR 1,341 SqFt / 125 SqM
EXTERIOR 227-231 SqFt / 21-22 SqM





HOLLYWOOD MOON

901 SOUTH OCEAN DRIVE
HOLLYWOOD BEACH, FL 33139



INTRACOASTAL WATERS
Golden Hour View

ATLANTIC OCEAN
Sunrise View

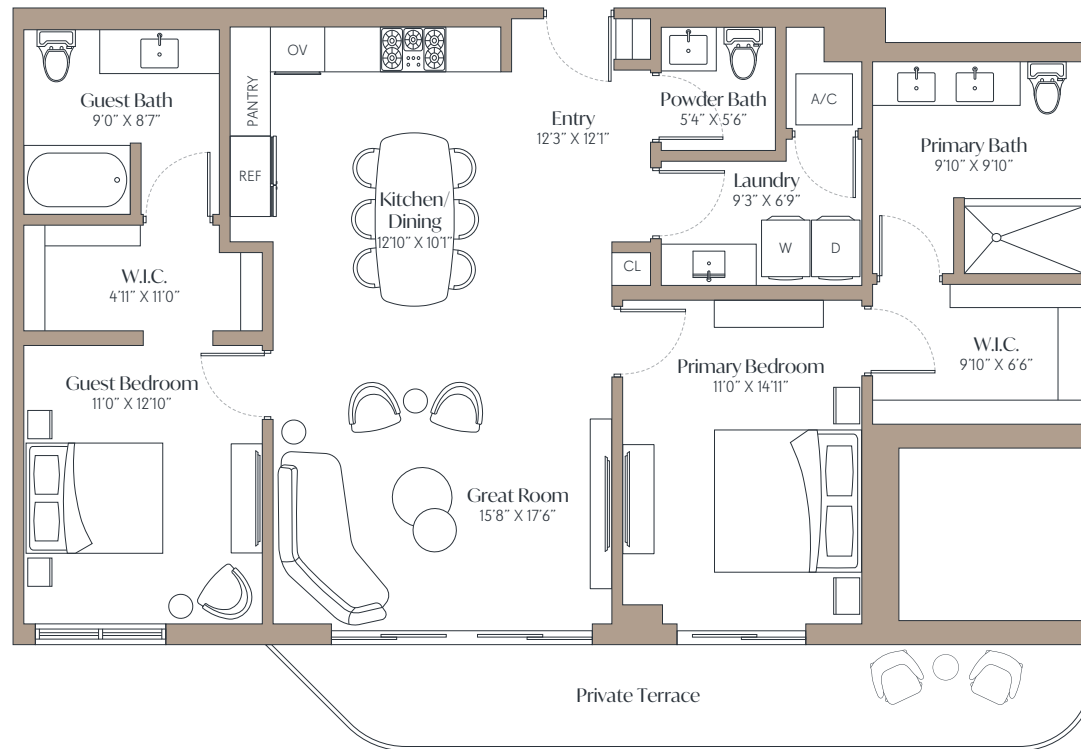
Residence 10

2 Bedrooms + Den
2.5 Bathrooms

INTERIOR 1,706 SqFt / 158 SqM
EXTERIOR 360-430 SqFt / 33-40 SqM




INTRACOASTAL WATERS
Golden Hour View




ATLANTIC OCEAN
Sunrise View

Residence 11

2 Bedrooms
2.5 Bathrooms

INTERIOR 1,324 SqFt / 123 SqM
EXTERIOR 182 SqFt / 17 SqM



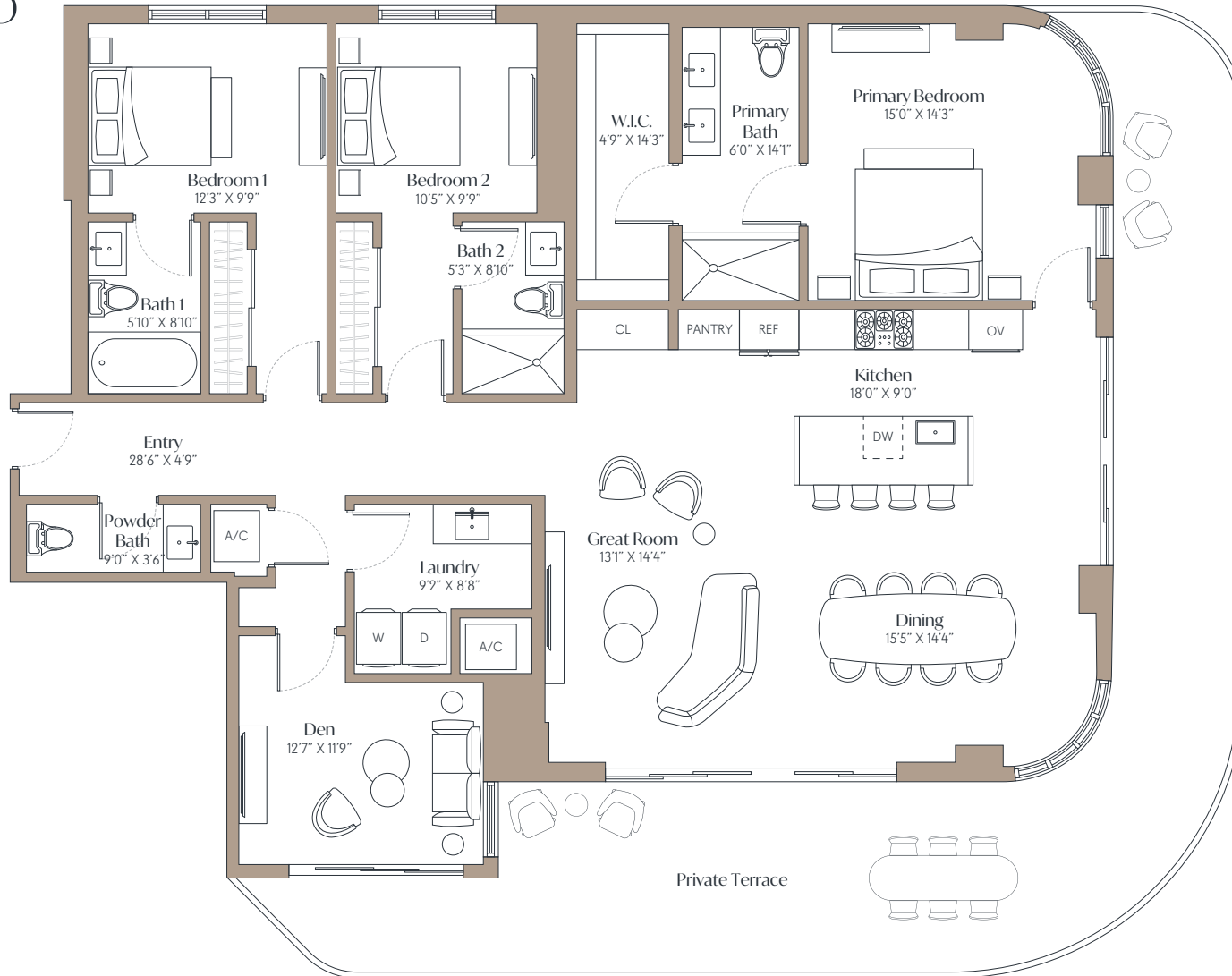


HOLLYWOOD MOON

901 SOUTH OCEAN DRIVE
HOLLYWOOD BEACH, FL 33139

INTRACOASTAL WATERS
Golden Hour View

ATLANTIC OCEAN
Sunrise View



Residence 12

3 Bedrooms + Den
3.5 Bathrooms

INTERIOR 2,112 SqFt / 196 SqM
EXTERIOR 651-690 SqFt / 60-64 SqM

